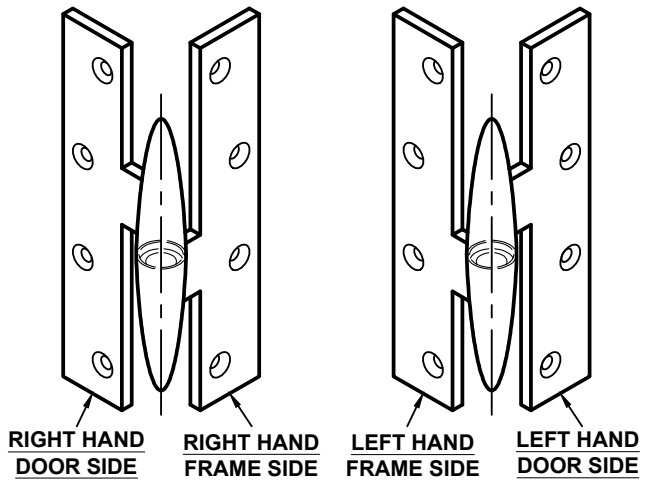
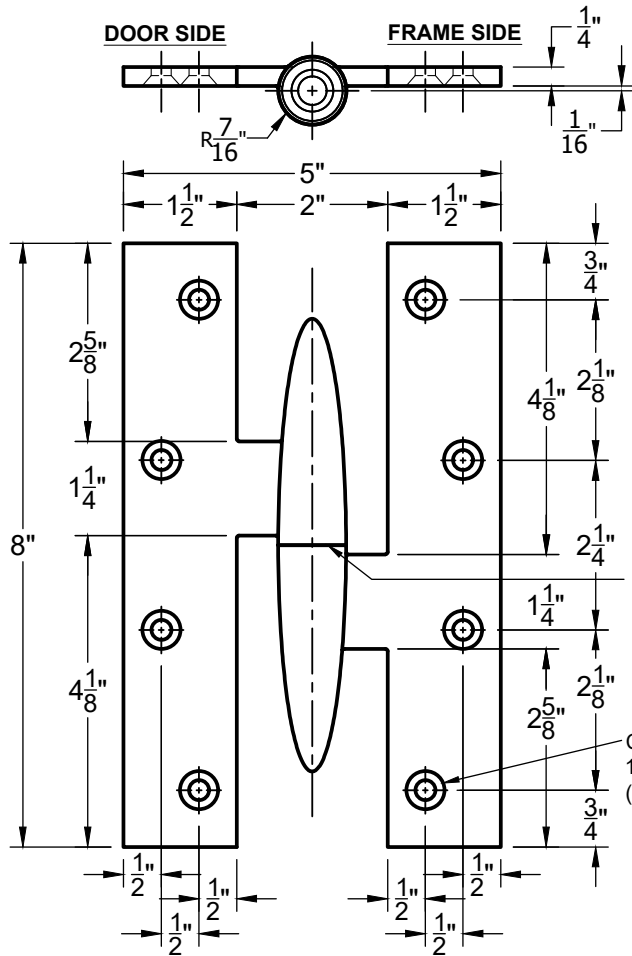


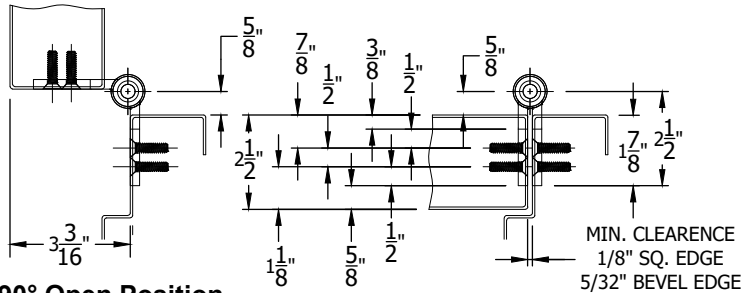
# 0190K, OLIVE KNUCKLE HINGE FOR 2-1/2" THICK DOOR - HANDED



1/32" THRUST WASHER

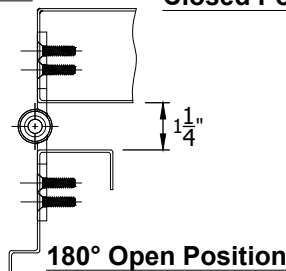
COUNTERSINK FOR 1/4-20 FLAT HEAD SCREW (8 PLACES)

RIGHT HANDED HINGE SHOWN



90° Open Position

Closed Position



180° Open Position

**NOTES:**

- OLIVE KNUCKLE HINGES ARE DESIGNED TO BE INSTALLED "FULL MORTISE".
- CAN BE USED ON HOLLOW METAL OR WOOD FRAMES AND DOORS.
- HINGES ARE HANDED. SEE ABOVE PICTURE FOR RIGHT HAND AND LEFT HAND.
  - LEFT HAND DOOR, USE "LEFT HAND" HINGE.
  - RIGHT HAND DOOR, USE "RIGHT HAND" HINGE
  - RIGHT HAND REVERSE DOOR, USE "LEFT HAND" HINGES
  - LEFT HAND REVERSE DOOR, USE "RIGHT HAND" HINGES
- 1/32" TOLERANCE ON ALL PARTS
- DO NOT SCALE DRAWING

SCREW DETAIL	
QTY.	DESCRIPTION
8	1/4-20x3/4" PHILLIPS FLAT HEAD MACHINE SCREW
8	#14x2" PHILLIPS FLAT HEAD SHEET METAL SCREW

OLIVE KNUCKLE HINGE FOR 2.50 DOOR-02.DWG



www.abhmfg.com  
 E-mail: abhinfo@abhmfg.com  
 Architectural Builders Hardware Mfg., Inc.  
 1222 Ardmore Ave., Itasca, IL 60143  
 630.875.9900; FAX 800.9FAXABH (932.9224)

0190K, OLIVE KNUCKLE HINGE FOR 2-1/2" THICK DOOR

© 2021 ABH Mfg., Inc. printed in USA

PAGE 1 OF 1  
 ISSUED 12-06-21