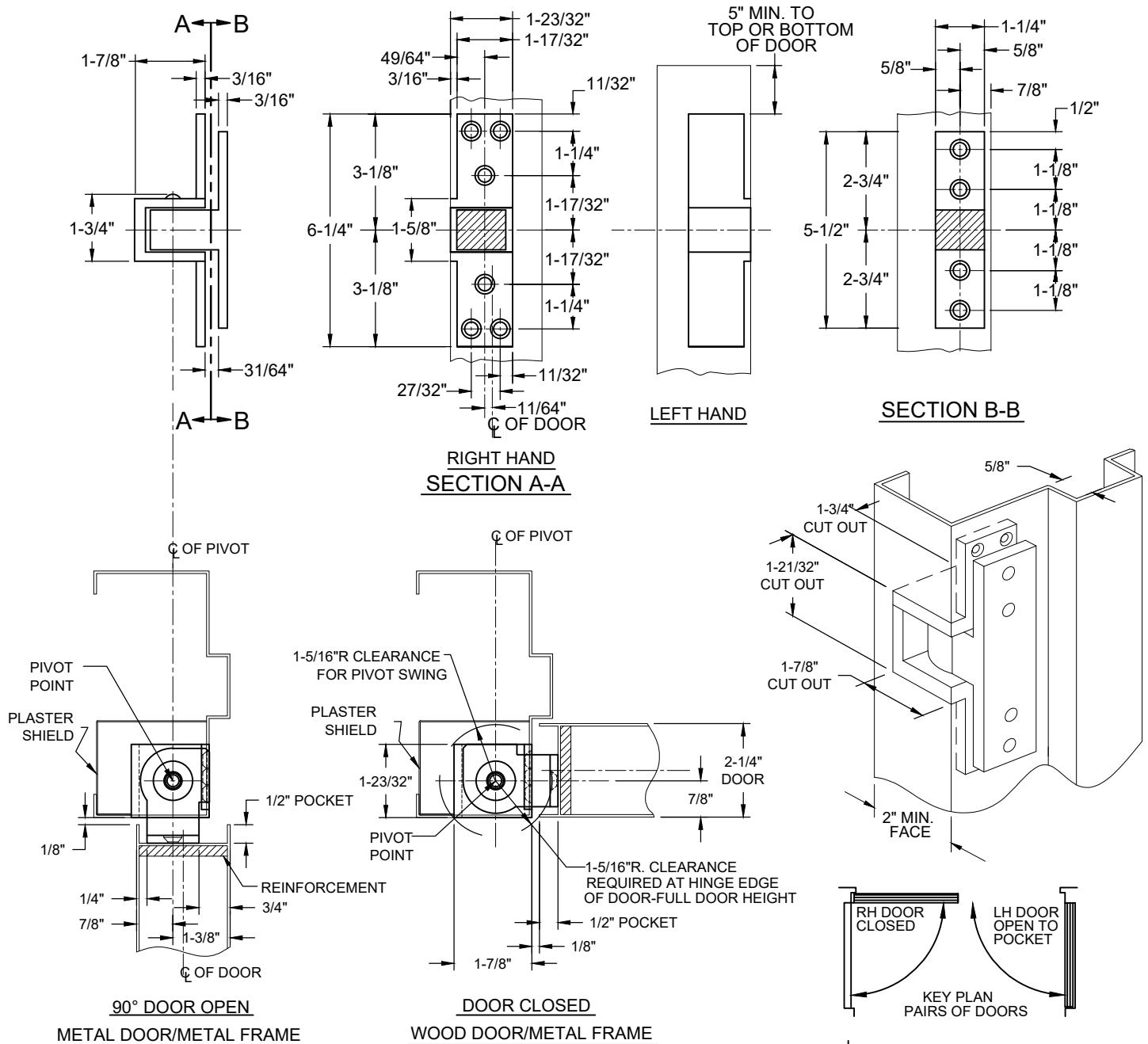


# 0519-2.25 POCKET PIVOT, NON-HANDED



## NOTES:

- CLEARANCE BETWEEN DOOR AND FRAME IS 1/8" ON HINGE SIDE.
- TO MEET UL STANDARD-  
ONE (1) PIVOT FOR EVERY 30" OF DOOR HEIGHT  
ONE (1) PIVOT FOR EVERY 90 LBS. OF DOOR WEIGHT
- MACHINE SCREWS ARE #12-24 X 3/4" FHMS.  
WOOD SCREWS ARE #12 X 1-1/2" FHWS
- ALL DIMENSION ARE IN INCHES
- DO NOT SCALE DRAWING.

**Disclaimer:** This template is to be used for installation, as shown, of said product and is not suitable for every application method. Custom applications, where door sizes, weights and conflicting hardware are a factor, need to be addressed with ABH and proper instructions provided. ABH is not liable for failure or performance of the product due to improper installation methods and/or use. Improper use and/or installation of this product will void the standard warranty.

**ABH**  
MANUFACTURING INC.

www.abhmfg.com  
E-mail: abhinfo@abhmfg.com  
Architectural Builders Hardware Mfg., Inc.  
1222 Ardmore Ave., Itasca, IL 60143  
630.875.9900; FAX 800.9FAXABH (932.9224)

© 2020 ABH Mfg., Inc.  
printed in USA

0519-2.25-01.DWG

0519-2.25

PAGE 1 OF 1

REVISED 09-03-20