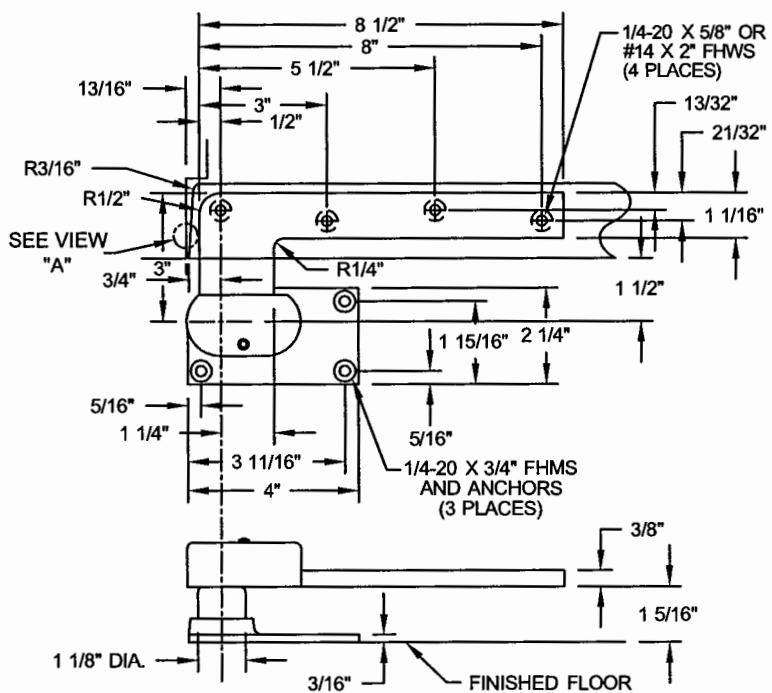
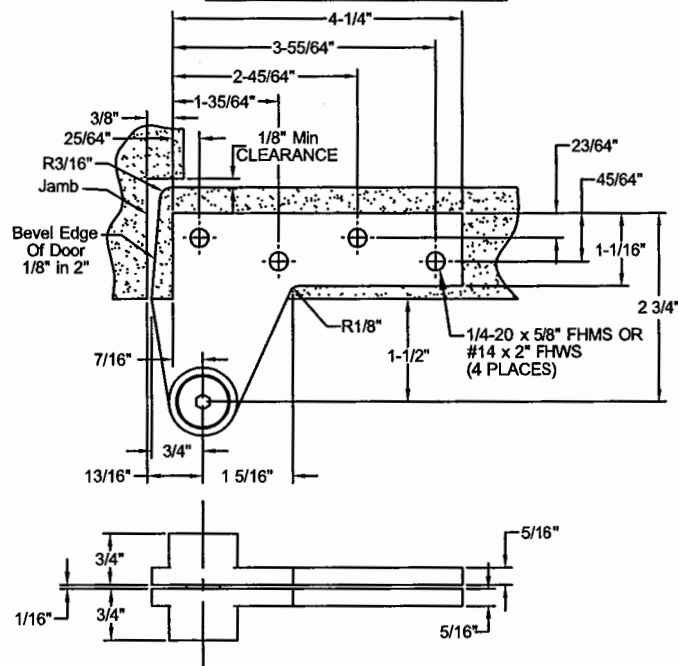


0147 1-1/2" OFFSET PIVOT SET

0147-1.5" BOTTOM PIVOT

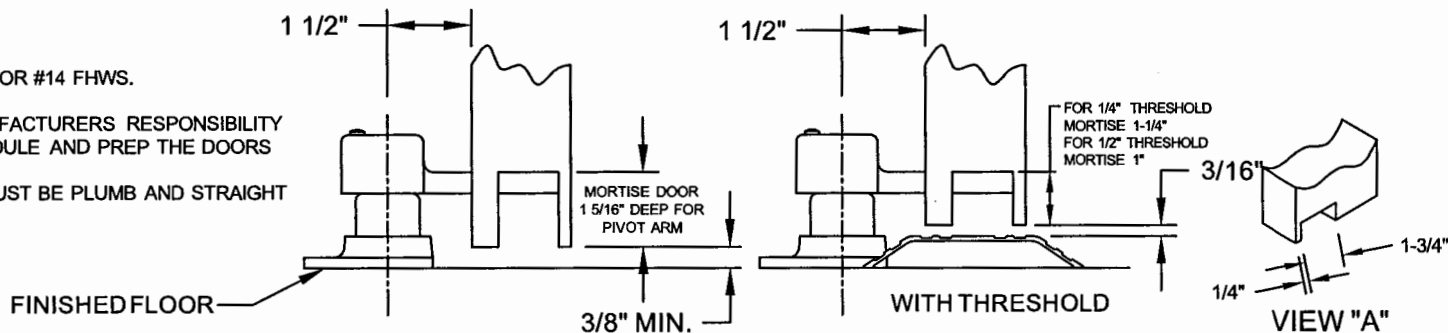


0180 1.5" TOP PIVOT



NOTES:

1. PIVOTS DRILLED FOR 1/4-20 FHMS OR #14 FHWS.
2. REINFORCING BY OTHERS.
3. IT IS THE DOOR AND FRAME MANUFACTURERS RESPONSIBILITY TO CHECK THE HARDWARE SCHEDULE AND PREP THE DOORS AND FRAMES.
4. CENTERLINE OF TOP PIVOT PIN MUST BE PLUMB AND STRAIGHT WITH BOTTOM PIVOT.



DO NOT SCALE DRAWING

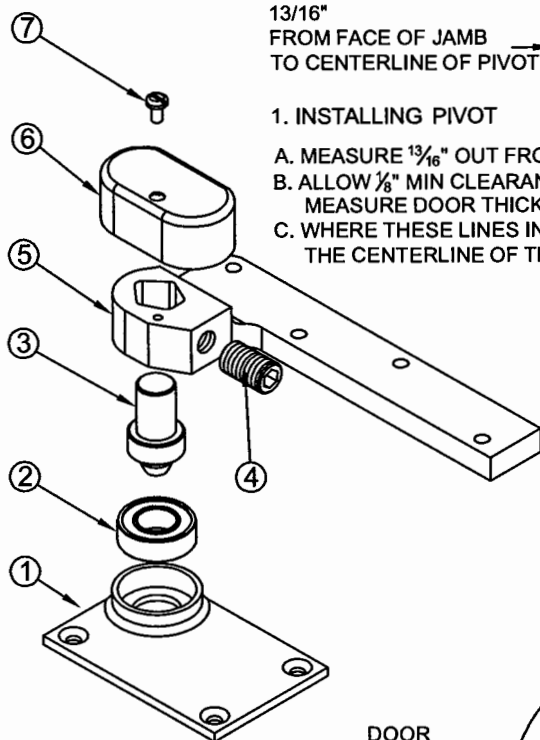
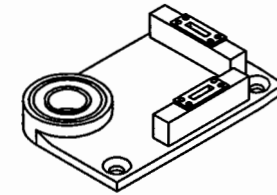
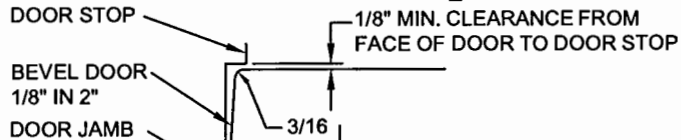
0147-1.5-1-01.DWG

0147-1.5

ISSUED 08-14-09

pg 1-2

0147 1-1/2" OFFSET PIVOT SET



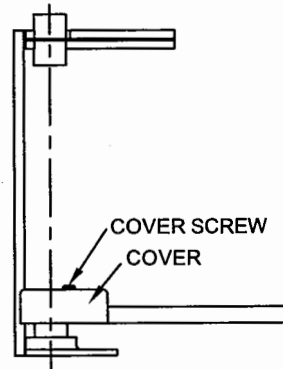
13/16" FROM FACE OF JAMB TO CENTERLINE OF PIVOT

1-1/2" FROM FACE OF DOOR TO CENTERLINE OF PIVOT

1. INSTALLING PIVOT

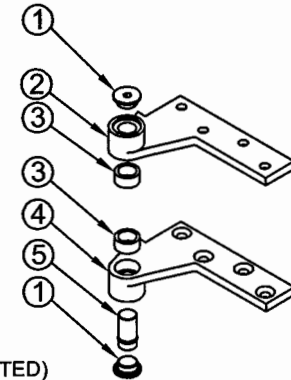
- A. MEASURE 13/16" OUT FROM DOOR JAMB.
- B. ALLOW 1/8" MIN CLEARANCE FROM DOOR STOP TO DOOR FACE. MEASURE DOOR THICKNESS AND ADD 1-1/2".
- C. WHERE THESE LINES INTERSECT DETERMINES THE CENTERLINE OF THE PIVOT.

IMPORTANT:
USE PLUMB LINE TO MAKE SURE THAT CENTERLINE OF TOP PIVOT PIN LINES UP WITH THE CENTERLINE OF SIDE JAMB PIVOTS



2. SET PIVOT SET

- A. PREPARE FLOOR TO RECEIVE FLOOR PORTION. SET ANCHORS PROVIDED SECURELY IN FLOOR.
- B. **IMPORTANT:** FLOOR PORTION MUST BE LEVEL. LEVEL IN BOTH DIRECTIONS PER ILLUSTRATION.
- C. FLOOR PORTION SHOULD BE PARALLEL WITH CENTERLINE OF DOOR.



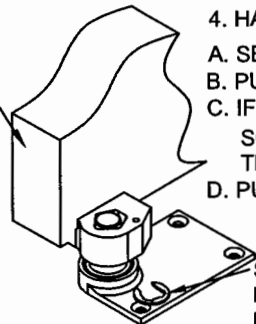
3. INSTALL TOP PIVOT AND PIVOT ARM

- A. INSTALL TOP PIVOT IN DOOR PER TEMPLATE
- B. INSTALL TOP PIVOT IN FRAME PER TEMPLATE.
- C. INSTALL ARM IN DOOR PER TEMPLATE.
- D. CENTERLINE OF TOP PIVOT SHOULD LINE UP WITH CENTERLINE OF PIVOT ARM. (USE PLUMB LINE AS ILLUSTRATED)
- E. IF SIDE JAMB PIVOT IS USED, SEE REQUIRED TEMPLATE.

4. HANG DOOR

- A. SET DOOR ON PIVOT SET SPINDLE
- B. PUSH TOP PIVOT PIN IN PLACE AND TIGHTEN 0180 END CAP (ITEM #1).
- C. IF DOOR DRAGS AT FLOOR (OR THRESHOLD, IF USED) LOOSEN ARM LOCKING SCREW AND RAISE DOOR TO DESIRED CLEARANCE AND INSERT ONE OR MORE 1/16" THICK SHIMS. RETIGHTEN ARM LOCKING SCREW SECURELY.
- D. PUT ARM COVER (ITEM #6) ON AND SECURE TIGHTLY WITH COVER SCREW (ITEM #7).

DOOR



SHIM SNAPS BETWEEN ITEM #3 (PIVOT PIN) AND ITEM #5 (ARM).

| ITEM NO. | QTY. | PART NO. |
|----------|------|-------------------------------|
| 1 | 1 | 0147-1.5 FLOOR MOUNTING PLATE |
| 2 | 1 | 0147 BALL BEARING |
| 3 | 1 | 0147 PIVOT PIN |
| 4 | 1 | 0147 SET SCREW |
| 5 | 1 | 0147-1.5 ARM |
| 6 | 1 | 0147 COVER |
| 7 | 1 | 0147 COVER SCREW |

| ITEM NO. | QTY. | PART NO. |
|----------|------|-----------------------|
| 1 | 2 | 0180 End Cap |
| 2 | 1 | 0180-1.5 Jamb Portion |
| 3 | 2 | 0180 Needle Bearing |
| 4 | 1 | 0180-1.5 Door Portion |
| 5 | 1 | 0180 Pivot Pin |

NOTE:
AFTER TOP PIVOT INSTALLATION IS COMPLETE ITEM #1 (END CAP) **MUST BE TIGHTENED SECURELY.**

0147-1.5-2-01.DWG

0147-1.5

ISSUED 08-14-09

pg 2-2