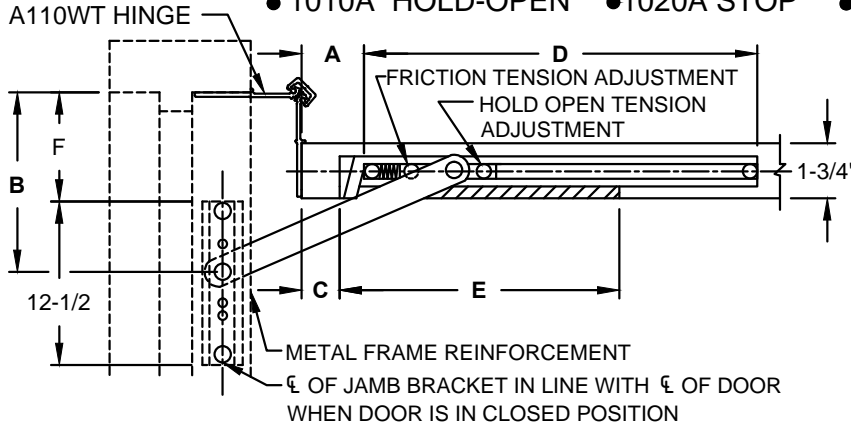


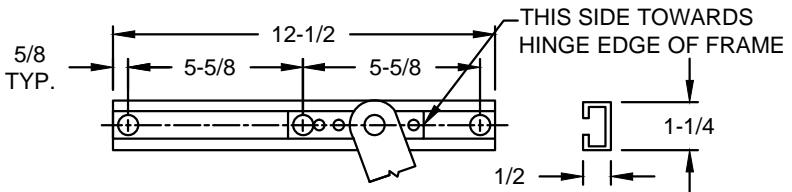
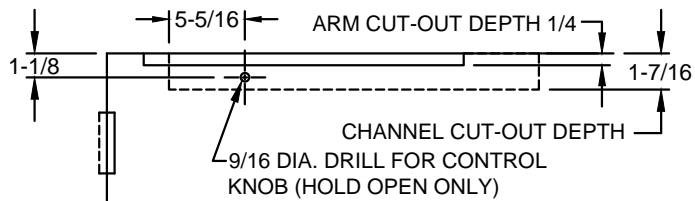
1000A SERIES CONCEALED HOLDERS & STOPS WITH A110WT WIDE THROW HINGE

- CONCEALED MOUNT
- HEAVY DUTY
- ADJUSTABLE

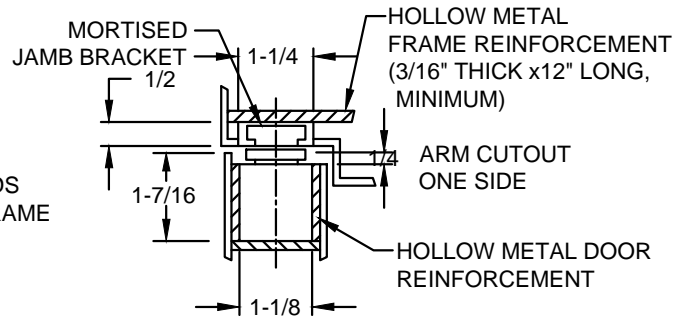
- 1010A HOLD-OPEN
- 1020A STOP
- 1030A FRICTION



A = FROM HINGE EDGE OF DOOR TO START OF CHANNEL CUT-OUT
B = FROM HINGE EDGE OF FRAME TO CL OF JAMB BRACKET PIVOT POINT (REF. ONLY)
C = FROM HINGE EDGE OF DOOR TO START OF ARM CUT-OUT
D = CHANNEL CUT-OUT LENGTH
E = ARM CUT-OUT
F = FROM HINGE SIDE OF FRAME TO START OF JAMB BRACKET CUT-OUT



ADJUSTABLE JAMB BRACKET



SINGLE ACTING DOOR

- a. JAMB BRACKET SLIDING CAM MUST BE INSTALLED WITH SHORT END TOWARD HINGE EDGE OF FRAME
- b. AFTER INSTALLATION, TIGHTEN (3) SET SCREWS IN JAMB BRACKET WITH 5/32 ALLEN WRENCH AT SELECTED DEGREE USING "B" DIMENSION AS REFERENCE.

		SCREW DETAIL	
		WOOD	METAL
JAMB	3	#14 x 1-1/2" FLAT HEAD WOOD SCREW	1/4-20 x 3/4" FLAT HEAD MACHINE SCREW
DOOR	2	#18 x 2-1/2" FLAT HEAD WOOD SCREW	5/16-18 x 1-1/2" TRUSS HEAD MACHINE SCREW

		1-3/4 THICK DOOR										
MODEL NO.	DOOR FRAME OPENING	A	B (REFERENCE ONLY)*						C	D	E	F
			DEGREE OF DOOR OPENING									
			85°	90°	95°	100°	105°	110°				
● 1011A ● 1021A ● 1031A	27 TO 29-15/16	4-1/4	7-5/8	5-13/16	-	-	-	-	2	20-5/8	20	2
● 1012A ● 1022A ● 1032A	30 TO 35-15/16	4-5/16	9-15/16	8-9/16	7-1/8	-	-	-	1-1/2	23-7/8	23-3/4	2-1/8
● 1013A ● 1023A ● 1033A	36 TO 39-15/16	5-9/16	10-7/8	9-1/8	7-13/16	5-7/8	5-7/16	-	0	26-1/4	27-1/2	1-9/16
● 1014A ● 1024A ● 1034A	40 TO 43-15/16	7-13/16	-	14-1/16	12-1/2	11-1/8	10	9	4	30	31-1/8	4-5/8
● 1015A ● 1025A ● 1035A	44 TO 52	5-9/16	-	14-11/16	12-7/8	11-3/8	9-15/16	8-7/8	4-1/2	31	35-1/4	5-1/4

- NOTES:**
1. REVERSIBLE/ NON - HANDED
 2. FOR SINGLE ACTING DOORS ONLY
 3. ALWAYS REQUEST LATEST TEMPLATE/ DRAWING FOR NEW INSTALLATIONS.
 4. ALL DIMENSIONS ARE IN INCHES.
 5. DRAWING IS NOT TO SCALE.
 6. ALL DRILLING AND TAPPING TO BE DONE IN FIELD.
 - * 7. DIMENSIONS B = HOLD-OPEN FOR HOLDERS, OPENING FOR STOPS



www.abhmfg.com
 E-mail: abhinfo@abhmfg.com
 Architectural Builders Hardware Mfg., Inc.
 1222 Ardmore Ave., Itasca, IL 60143
 630.875.9900; FAX 800.9FAXABH (932.9224)

1000A WITH
A110WT WIDE THROW HINGE
 ©2017 ABH Mfg., Inc.
 printed in USA
 PAGE 1 OF 1
 REVISED 05-03-17