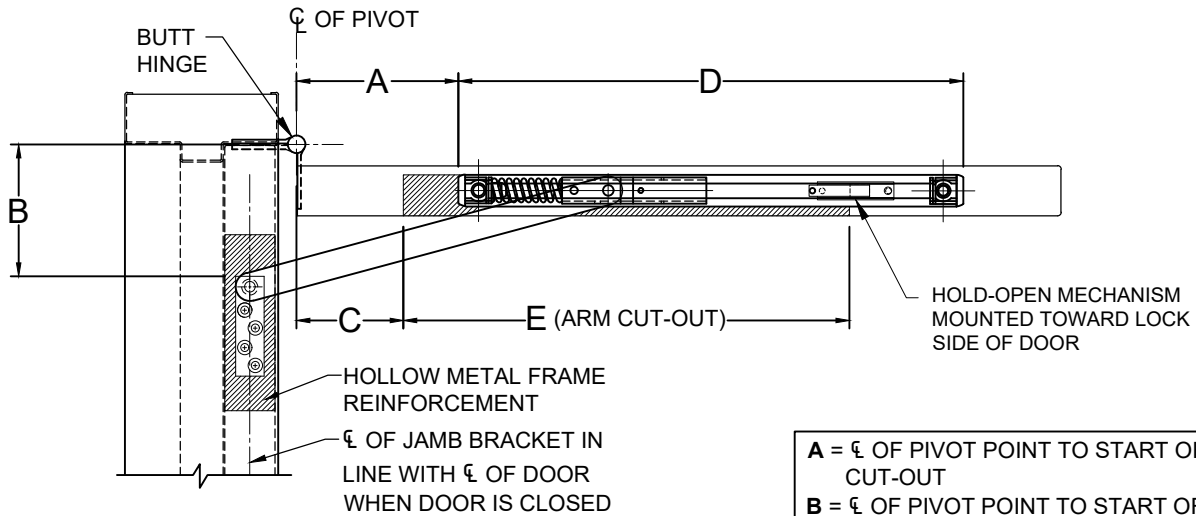
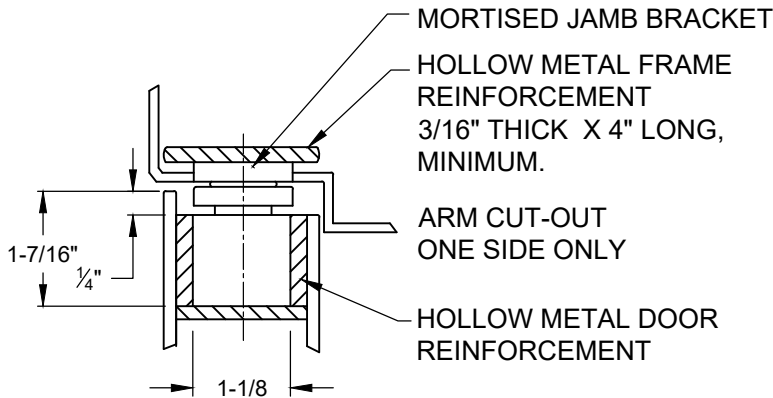


1000HC (HOLD-CLOSED) SERIES CONCEALED HOLDERS - STOP ONLY

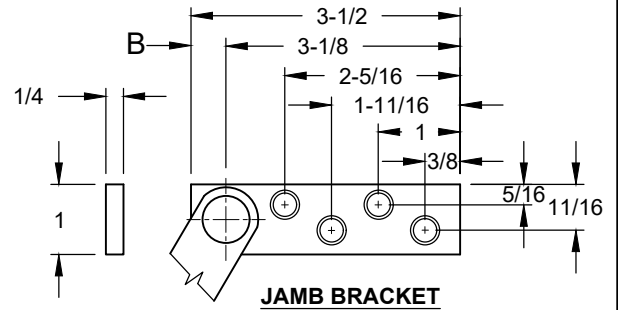


TOP VIEW

- A** = ϕ OF PIVOT POINT TO START OF CHANNEL CUT-OUT
- B** = ϕ OF PIVOT POINT TO START OF JAMB BRACKET
- C** = ϕ OF PIVOT POINT TO START OF ARM CUT-OUT
- D** = CHANNEL CUT-OUT LENGTH
- E** = ARM CUT-OUT



SINGLE ACTING DOOR



JAMB BRACKET

NOTES:

1. REVERSIBLE/ NON - HANDED
2. FOR SINGLE ACTING DOORS
3. ALWAYS REQUEST LATEST TEMPLATE/ DRAWING FOR NEW INSTALLATIONS.
4. ALL DIMENSIONS ARE IN INCHES.
5. DRAWING IS NOT TO SCALE, UNLESS NOTED.
6. ALL DRILLING AND TAPPING TO BE DONE IN FIELD.

SCREW DETAIL			
	QTY	WOOD	METAL
JAMB	4	#14 X 1-1/2" FLAT HEAD WOOD SCREW	1/4"- 20 x 3/4" FLAT HEAD MACHINE SCREW
DOOR	2	#18 X 2-1/2" FLAT HEAD WOOD SCREW	5/16" -18 x 1-1/2" FLAT HEAD MACHINE SCREW

1000HC-1-00.DWG



www.abhmfg.com
 E-mail: abhinfo@abhmfg.com
 Architectural Builders Hardware Mfg., Inc.
 1222 Ardmore Ave., Itasca, IL 60143
 630.875.9900; FAX 800.9FAXABH (932.9224)

© 2021 ABH Mfg., Inc.
 printed in USA

1000HC
 PAGE 1 OF 2
 ISSUED 05-07-21

1000HC (HOLD CLOSED) SERIES CONCEALED HOLDERS - STOP ONLY

ALL DIMENSIONS ARE IN INCHES.

BUTT HINGE ONLY

FOR OTHER THEN 90° SWING, CUSTOM UNIT REQUIRED.

DEGREE		85° H.O.				90° H.O.				95° H.O.				
MODEL NO.	DOOR OPENING	A	B	C	E	A	B	C	E	A	B	C	E	D
1021HC	27 to 29-15/16	—	—	—	—	5-11/16	4-5/8	3-3/4	15-5/8	—	—	—	—	17-11/16
1022HC	30 to 35-15/16	—	—	—	—	7-1/2	5-5/8	4-3/4	17-5/8	—	—	—	—	18-7/8
1023HC	36 to 39-15/16	—	—	—	—	8-3/8	7-1/2	6-3/4	18-3/4	—	—	—	—	21-5/16
1024HC	40 to 43-15/16	—	—	—	—	12-9/16	8-11/16	8	22-3/4	—	—	—	—	22-11/16
1025HC	44 to 52	—	—	—	—	15-1/4	9-7/8	8-7/8	26-1/8	—	—	—	—	24-1/8

DEGREE		100° H.O.				105° H.O.				110° H.O.				
MODEL NO.	DOOR OPENING	A	B	C	E	A	B	C	E	A	B	C	E	D
1021HC	27 to 29-15/16	—	—	—	—	—	—	—	—	—	—	—	—	—
1022HC	30 to 35-15/16	—	—	—	—	—	—	—	—	—	—	—	—	—
1023HC	36 to 39-15/16	—	—	—	—	—	—	—	—	—	—	—	—	—
1024HC	40 to 43-15/16	—	—	—	—	—	—	—	—	—	—	—	—	—
1025HC	44 to 52	—	—	—	—	—	—	—	—	—	—	—	—	—

1000HC-2-00.DWG



www.abhmfg.com
 E-mail: abhinfo@abhmfg.com
 Architectural Builders Hardware Mfg., Inc.
 1222 Ardmore Ave., Itasca, IL 60143
 630.875.9900; FAX 800.9FAXABH (932.9224)

© 2021 ABH Mfg., Inc.
 printed in USA

1000HC

PAGE 2 OF 2
 ISSUED 05-07-21