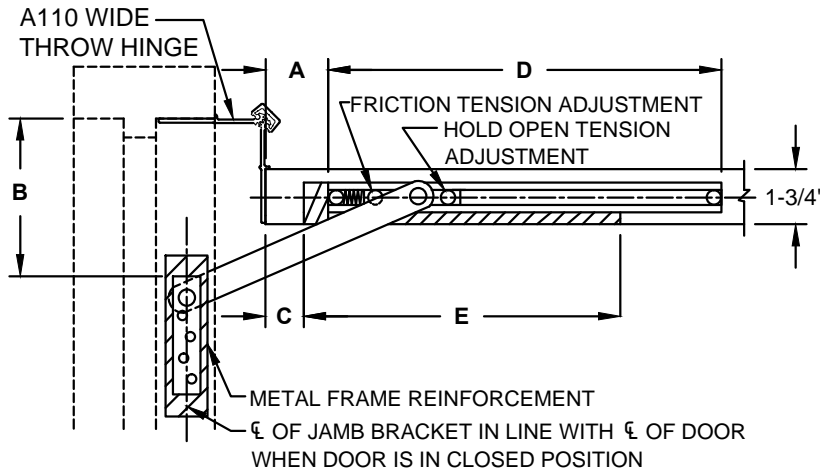
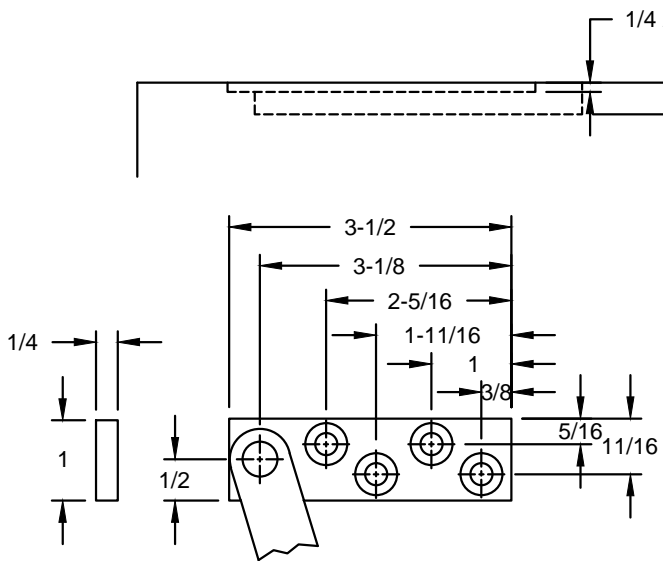


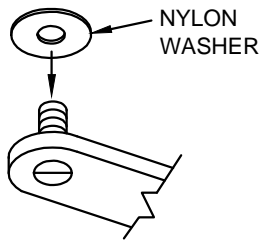
1000SL SERIES SLIM-LINE CONCEALED HOLDERS & STOPS WITH A110 WIDE THROW HINGE



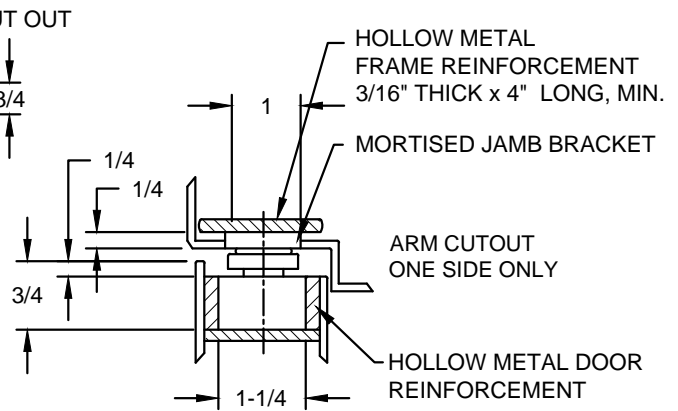
A = FROM HINGE EDGE OF DOOR TO START OF CHANNEL CUT-OUT
B = FROM HINGE EDGE OF FRAME TO START OF JAMB BRACKET CUT OUT
C = FROM HINGE EDGE OF DOOR TO START OF ARM CUT-OUT
D = CHANNEL CUT OUT LENGTH
E = ARM CUT OUT



JAMB BRACKET



1000 SLT REPLACES THE JAMB BRACKET WITH A THREADED NYLON JAMB PIVOT SCREW, ADD 3/8" TO B DIM. DRILL & TAP FRAME FOR 3/8-24 M.S. NO FRAME PREP NEEDED. NOTE: 1/4" OR GREATER REINFORCEMENT RECOMMENDED



SINGLE ACTING DOOR

NOTES:

1. REVERSIBLE/ NON - HANDED
2. FOR SINGLE ACTING DOORS ONLY
3. ALWAYS REQUEST LATEST TEMPLATE/ DRAWING FOR NEW INSTALLATIONS.
4. ALL DIMENSIONS ARE IN INCHES.
5. DRAWING IS NOT TO SCALE.
6. ALL DRILLING AND TAPPING TO BE DONE IN FIELD.

SCREW DETAIL

	QTY	WOOD	METAL
JAMB	4	#14 x 1-1/2 FLAT HEAD WOOD SCREW	1/4-20 x 3/4 FLAT HEAD MACHINE SCREW
DOOR	2	#18 x 2-1/2 FLAT HEAD WOOD SCREW	5/16-18 x 1-1/2 FLAT HEAD MACHINE SCREW



www.abhmfg.com
 E-mail: abhinfo@abhmfg.com
 Architectural Builders Hardware Mfg., Inc.
 1222 Ardmore Ave., Itasca, IL 60143
 630.875.9900; FAX 800.9FAXABH (932.9224)

©2017 ABH Mfg., Inc.
 printed in USA

**1000SL WITH
A110WT WIDE THROW HINGE**

PAGE 1 OF 2
 REVISED 05-03-17

1000SL CONCEALED HOLDERS & STOPS WITH A110WT WIDE THROW HINGE

1010SL HOLD-OPEN 1020SL STOP
FOR 1-3/4 THICK DOOR

1. FOR DEAD STOP ADD 7/8" TO "A" DIMENSION
2. FOR 1000SLT ADD 3/8" TO "B" DIMENSION
3. ALL DIMENSIONS ARE IN INCHES.
4. "A" & "C" DIMENSIONS MEASURED FROM HINGE EDGE OF DOOR.
5. "B" DIM. MEASURED FROM HINGE EDGE OF FRAME

DEGREE		85° H.O.				90° H.O.				95° H.O.				
MODEL NO.	DOOR OPENING	A	B	C	E	A	B	C	E	A	B	C	E	D
● 1011SL ● 1021SL	27 TO 29-15/16	5-3/4	4-1/2	2-1/2	17-3/4	5-3/8	4-1/4	0	20	—	—	—	—	17-3/8
● 1012SL ● 1022SL	30 TO 35-15/16	6-7/8	6-1/2	5-1/2	18-1/8	6-5/8	6	5-1/8	18	6-1/8	5-1/2	3-3/4	19	18-13/16
● 1013SL ● 1023SL	36 TO 39-15/16	11-1/8	8	7	22-3/8	10-5/8	7-1/2	6-1/2	22-1/2	10-3/16	7	6	22-1/2	20-1/8
● 1014SL ● 1024SL	40 TO 43-15/16	13-15/16	9	8	25-1/2	13-3/8	8-1/2	7-1/2	25-1/2	12-7/8	8	7	25-1/2	21-5/16
● 1015SL ● 1025SL	44 TO 52	16-7/8	10	9	28-1/4	16-3/16	9-3/8	8-3/8	28-3/8	15-5/8	8-3/4	7-3/4	28-3/8	22-7/16

DEGREE		100° H.O.				105° H.O.				110° H.O.				
MODEL NO.	DOOR OPENING	A	B	C	E	A	B	C	E	A	B	C	E	D
● 1011SL ● 1021SL	27 TO 29-15/16	—	—	—	—	—	—	—	—	—	—	—	—	17-3/8
● 1012SL ● 1022SL	30 TO 35-15/16	5-15/16	5	2-1/4	20	—	—	—	—	—	—	—	—	18-13/16
● 1013SL ● 1023SL	36 TO 39-15/16	9-13/16	6-1/2	5-1/2	22-1/2	9-9/16	6	4-3/4	22-3/4	9-3/8	5-1/2	0	27	20-1/8
● 1014SL ● 1024SL	40 TO 43-15/16	12-1/2	7-1/2	6-1/2	25-3/8	12-1/8	7	6	25-7/8	11-7/8	6-1/2	5-1/2	25-1/2	21-5/16
● 1015SL ● 1025SL	44 TO 52	15-1/8	8-1/4	7-1/4	28-3/8	14-3/4	7-3/4	6-3/4	28-3/8	14-1/2	7-1/4	6-1/4	28-3/8	22-7/16



www.abhmfg.com
 E-mail: abhinfo@abhmfg.com
 Architectural Builders Hardware Mfg., Inc.
 1222 Ardmore Ave., Itasca, IL 60143
 630.875.9900; FAX 800.9FAXABH (932.9224)

©2017 ABH Mfg., Inc.
 printed in USA

**1000SL WITH
A110 WIDE THROW HINGE**

PAGE 2 OF 2
 REVISED 05-03-17

1000SLWT-2-02.DWG