

1536, 1537, 1538, 1539 SERIES CONCEALED OVERHEAD HOLDERS & STOPS INSTALLATION INSTRUCTIONS

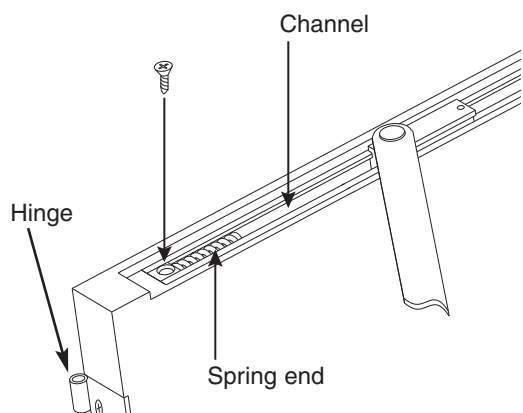
SARGENT
ASSA ABLOY

NON-HANDED. LEFT HAND SHOWN, RIGHT HAND OPPOSITE.

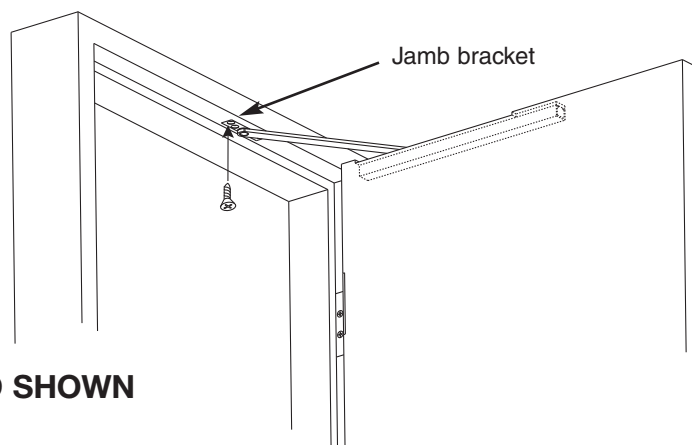
FOR INSTALLATION ASSISTANCE, CONTACT SARGENT AT 800-727-5477 or www.sargentlock.com

- 1**
- Use the attached template that corresponds with the type of hinge being used
 - **Drill and tap** prepared metal door for channel and frame for jamb bracket. Fasten with #12-24 machine screws provided

- 2**
- **Install channel** into door (spring end towards hinge)
 - **Secure channel** with fasteners provided
 - **Secure jamb** bracket to frame with fasteners provided

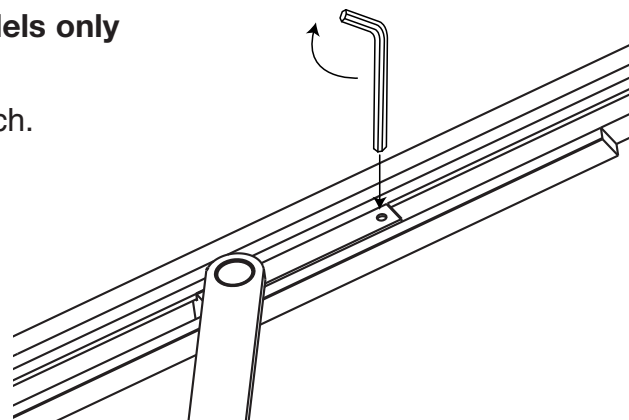


LEFT HAND SHOWN



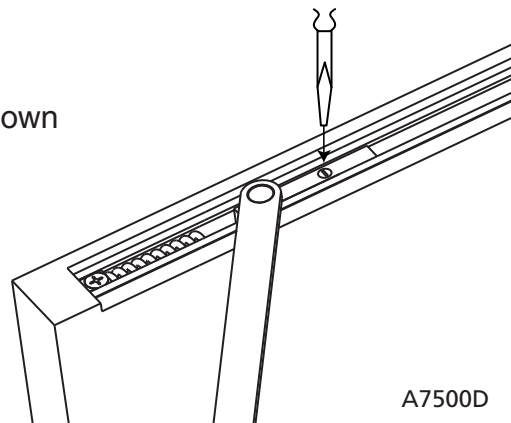
- 3**
- Holding tension adjustment on hold open models only
(1536H, 1537H, 1538H and 1539H)**

- **To increase tension** insert a 3/32" Allen wrench. Turn clockwise as shown.

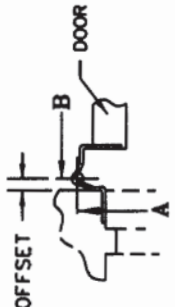


- 4**
- Friction adjustment on models
(1536F, 1537F, 1538F and 1539F) only**

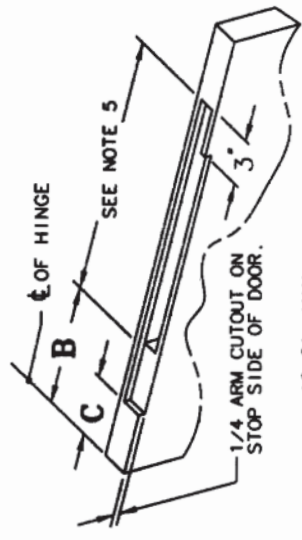
- **To increase friction**, insert flat bladed screw driver as shown and turn clockwise until desired friction is attained



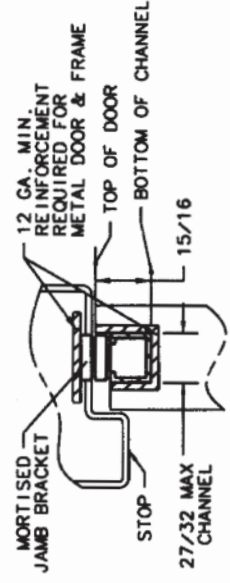
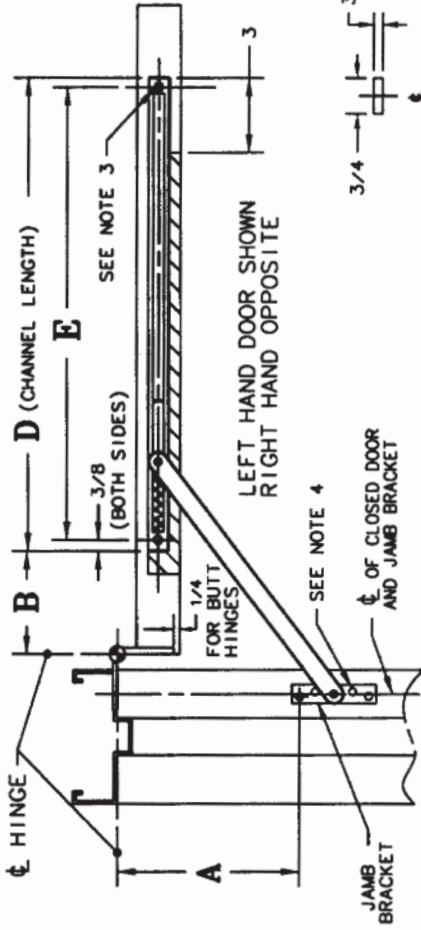
MODEL NO.	ACTUAL DOOR WIDTH	DEGREE OF OPENING AT HOLD OPEN OR STOP (FOR DEAD STOP SEE NOTE 1)												1530 MOUNTING GROUP 1										
		85°			90°			95°			100°			105°			110°			HINGE TYPE	BUTT WIDTH OR OFFSET	DOOR THICKNESS		
		A	B	C	A	B	C	A	B	C	A	B	C	A	B	C	A	B	C					
1536	19 - 25	5 3/4	3 1/4	3	4 1/2	1 3/8	1 1/2	2 1/2	3 3/8	2	3 3/8	7 3/8	2 3/4	1	3 1/2	5 2/8	0	3 3/8	2 1/2	0	BUTT HINGE	4 1/2	1 3/4 - 2	
1537	25 1/8 - 32 1/2	6 1/2	6 1/2	6 1/4	7 5/8	6 1/4	5 1/2	1 1/2	5 1/2	7 5/8	4 3/4	5 5/8	5 5/8	4	4 5/8	5 1/2	3 2/4	1 1/2	4 1/2	5 1/4	3 1/4	BUTT HINGE	4	1 3/8 - 1 3/4
1538	32 5/8 - 40	9	9 3/8	9	8 1/2	8 1/2	8 3/8	8	7 1/2	8 3/8	8	8	8	1 1/4	7 1/4	7 5/8	6 1/2	7 6/8	3 7/8	5 1/2	BUTT HINGE	5	2 1/4	
1539	40 1/8 - 48	10 7/8	14 1/4	10 7/8	10 1/4	13 5/8	10 1/4	5 10/4	9 5/8	13	9 5/8	9 5/8	12 1/2	1 1/8	8 5/8	12 1/8	8 5/8	8 1/4	11 1/4	8 1/4	OFFSET PIVOT	3 3/4	1 3/4	
																					SWING CLEAR HINGE	5 5/8	1 3/4 - 2	



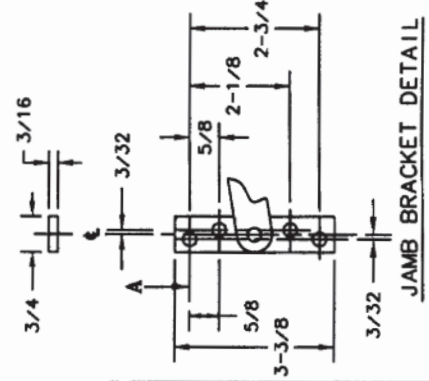
SWING CLEAR HINGE



MODEL NO.	D	E
1536	15	14 1/4
1537	17 1/8	16 3/8
1538	20 1/4	19 1/2
1539	22 1/2	21 3/4



SECTIONAL VIEW WITH DOOR CLOSED



JAMB BRACKET DETAIL

- NOTES
- DEAD STOP OCCURS AT APPROX. 10° BEYOND HOLD OPEN POSITION. FOR DEAD STOP MOUNTING AT LISTED DEGREE OF OPENING ADD 1/4 TO DIM. A & B.
 - WHERE INDICATED THE ARM CUT-OUT MUST BE EXTENDED TO THE HINGE EDGE OF DOOR.
 - USE (2) #12-24 X 1 FLAT HEAD MACHINE SCREWS OR #12 X 2 WOOD SCREWS.
 - USE (2) #12-24 X 1/2 FLAT HEAD MACHINE SCREWS OR #12 FLAT HEAD WOOD SCREWS.
 - PROVIDE 1/16 OF CLEARANCE ON EACH END OF CHANNEL.
 - FOR CONTINUOUS HINGES, USE SIMILAR BUTT HINGE VALUES

SARGENT

ASSA ABLOY

Copyright © SARGENT Manufacturing.
All rights reserved. Reproduction in whole or in part without the express written permission of SARGENT Manufacturing is prohibited.

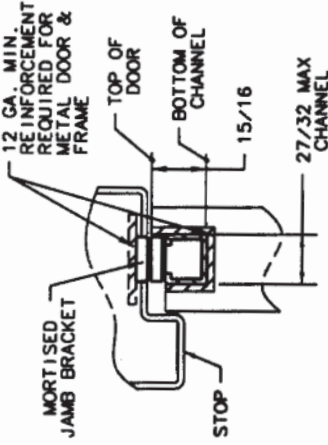
ASSA ABLOY, the global leader in door opening solutions

1530 MOUNTING GROUP 2

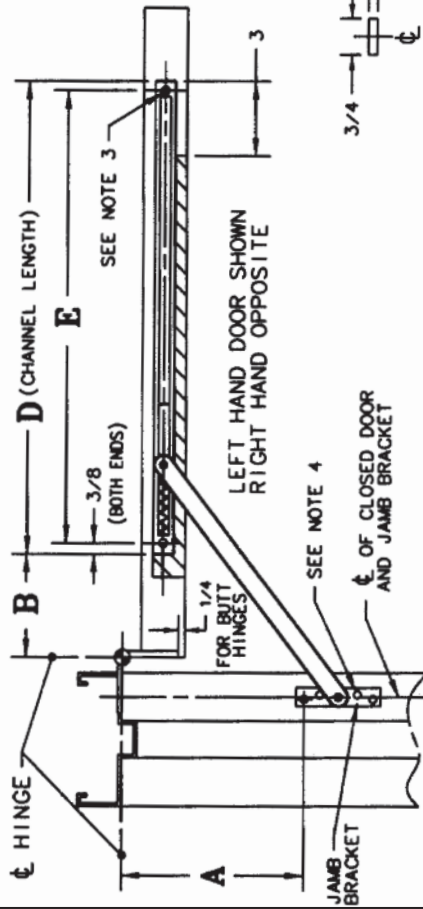
MODEL NO.	ACTUAL DOOR WIDTH	DEGREE OF OPENING AT HOLD OPEN OR STOP (FOR DEAD STOP SEE NOTE 1)																	
		85°			90°			95°			100°			105°			110°		
		A	B	C	A	B	C	A	B	C	A	B	C	A	B	C	A	B	C
1536	19 - 25	5/8	1 3/4	3/4	3 3/8	1 1/8	1/4	1 1/4	5/8	3/4	3 3/8	1 1/8	0	1 1/4	5/8	0	3 3/8	1 1/8	0
1537	25 1/8 - 32 1/2	3/8	1 1/2	6/4	1 1/2	5/8	1/2	3 3/4	1 1/2	3/4	3 3/8	1 1/8	3/4	1 1/2	5/8	1/2	7 7/8	3 1/4	1 1/2
1538	32 5/8 - 40	3/4	9/8	3/8	1 1/4	7/8	1/2	1 1/2	5/8	7/8	1 1/2	5/8	7/8	1 1/2	5/8	7/8	7 7/8	3 1/4	1 1/2
1539	40 1/8 - 48	7/8	14/8	10/8	1 1/4	10/8	10/4	1 1/4	7/8	9/4	1 1/4	7/8	9/4	1 1/4	7/8	9/4	11 5/8	4 3/8	3 3/8

MODEL NO.	D	E
1536	15	14 1/4
1537	17 1/8	16 3/8
1538	20 1/4	19 1/2
1539	22 1/2	21 3/4

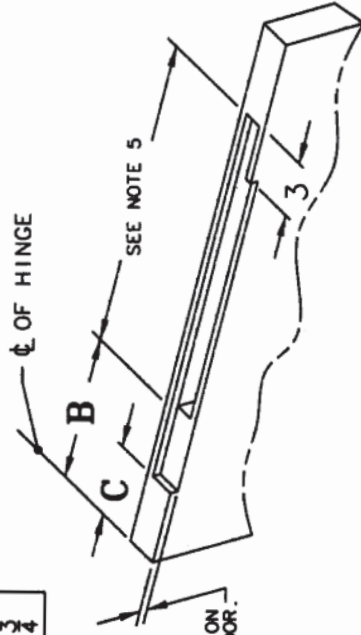
HINGE TYPE BUTT OR OFFSET DOOR THICKNESS 5 1 3/4 - 2 3/4 2 - 2 1/4



SECTIONAL VIEW WITH DOOR CLOSED



- NOTES
1. DEAD STOP OCCURS AT APPROX. 10° BEYOND HOLD OPEN POSITION. FOR DEAD STOP MOUNTING AT LISTED DEGREE OF OPENING ADD 1/4 TO DIM. A & B.
 2. WHERE INDICATED THE ARM CUT-OUT MUST BE EXTENDED TO END OF DOOR.
 3. USE (2) #12-24 X 1 FLAT HEAD MACHINE SCREWS OR #12 X 2 WOOD SCREWS.
 4. USE #12-24 X 1/2 FLAT HEAD MACHINE SCREWS OR #12 FLAT HEAD WOOD SCREWS. 4 REQUIRED FOR JAMB BRACKET.
 5. PROVIDE 1/16 OF CLEARANCE ON EACH END OF CHANNEL.
 6. FOR CONTINUOUS HINGES, USE SIMILAR BUTT HINGE VALUES

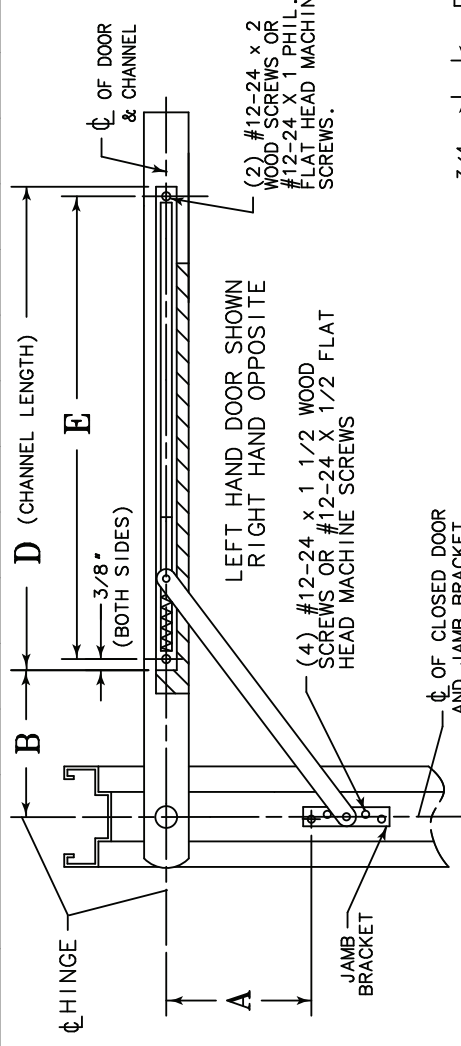


SARGENT
ASSA ABLOY

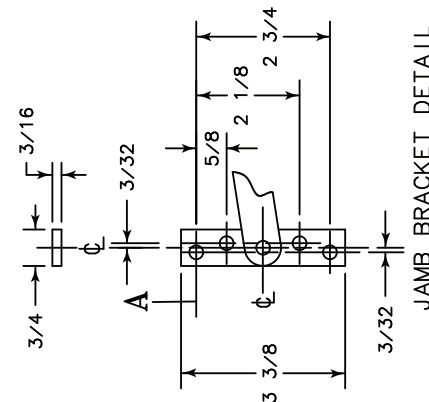
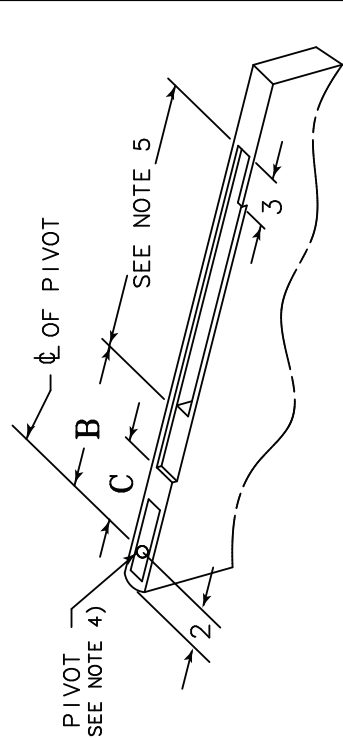
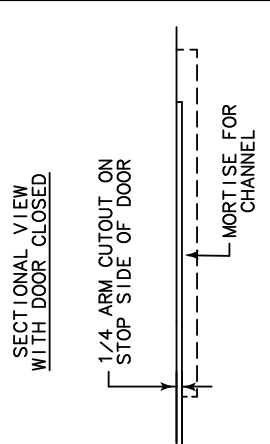
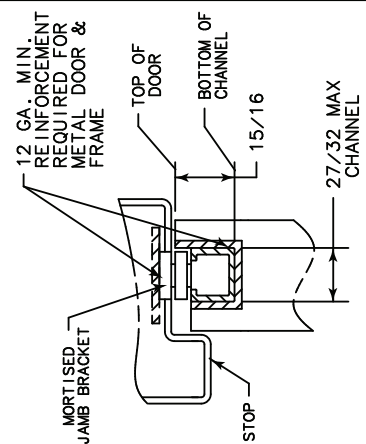
Copyright © SARGENT Manufacturing.
All rights reserved. Reproduction in whole or in part without the express written permission of SARGENT Manufacturing is prohibited.

ASSA ABLOY, the global leader in door opening solutions

MODEL NO.	DEGREE OF OPENING AT HOLD OPEN OR STOP (FOR DEAD STOP SEE NOTE 2)																	
	85°			90°			95°			100°			105°			110°		
	A	B	C	A	B	C	A	B	C	A	B	C	A	B	C	A	B	C
1536	21 1/4	5 3/8	1 4/2	3 4/4	1 3/2	1 4/2	1 4/4	3 4/4	1 4/4	1 4/4	3 3/4	4 2/8	7 3/2	3 3/4	3 3/4	3 3/4	2 4/4	3
1537	26 3/8	7 6/8	1 6/2	1 6/2	1 6/8	1 6/8	1 6/8	1 6/8	1 6/8	1 6/8	3 5/4	5 1/2	1 5/2	1 5/4	1 5/4	1 5/4	1 5/4	1 5/4
1538	32 5/8	9 1/4	1 8/4	3 8/4	1 8/4	1 8/4	1 8/4	1 8/4	1 8/4	1 8/4	7 7/8	8 4/4	1 7/2	1 7/8	1 7/8	1 7/8	5 7/8	1 7/8
1539	40 1/8	11 1/4	1 10/8	5 10/8	10 10/8	10 10/8	10 10/8	10 10/8	10 10/8	10 10/8	9 1/2	12 1/2	1 9/2	9 1/2	9 1/2	5 8/8	1 12/8	1 8/8



- NOTES:**
1. DIMENSIONS ARE GIVEN FOR THE HOLD OPEN POS. DEAD STOP OCCURS 5°-9° AFTER HOLD OPEN.
 2. FOR DEAD STOP TEMPLATING, ADD 1/8 TO DIM. "A" AND 1/4 TO DIM. "B".
 3. FOR DOUBLE ACTING DOORS, THE ARM CUTOUT MUST BE MADE ON BOTH SIDES OF DOOR.
 4. DOOR WIDTHS WERE BASED ON A 2" BACKSET.
 5. PROVIDE 1/16 OF CLEARANCE ON EACH END OF CHANNEL
 6. FOR CONTINUOUS HINGES, USE SIMILAR BUTT HINGE VALUES



SARGENT
ASSA ABLOY

ASSA ABLOY, the global leader in door opening solutions

Copyright © SARGENT Manufacturing. All rights reserved. Reproduction in whole or in part without the express written permission of SARGENT Manufacturing is prohibited.