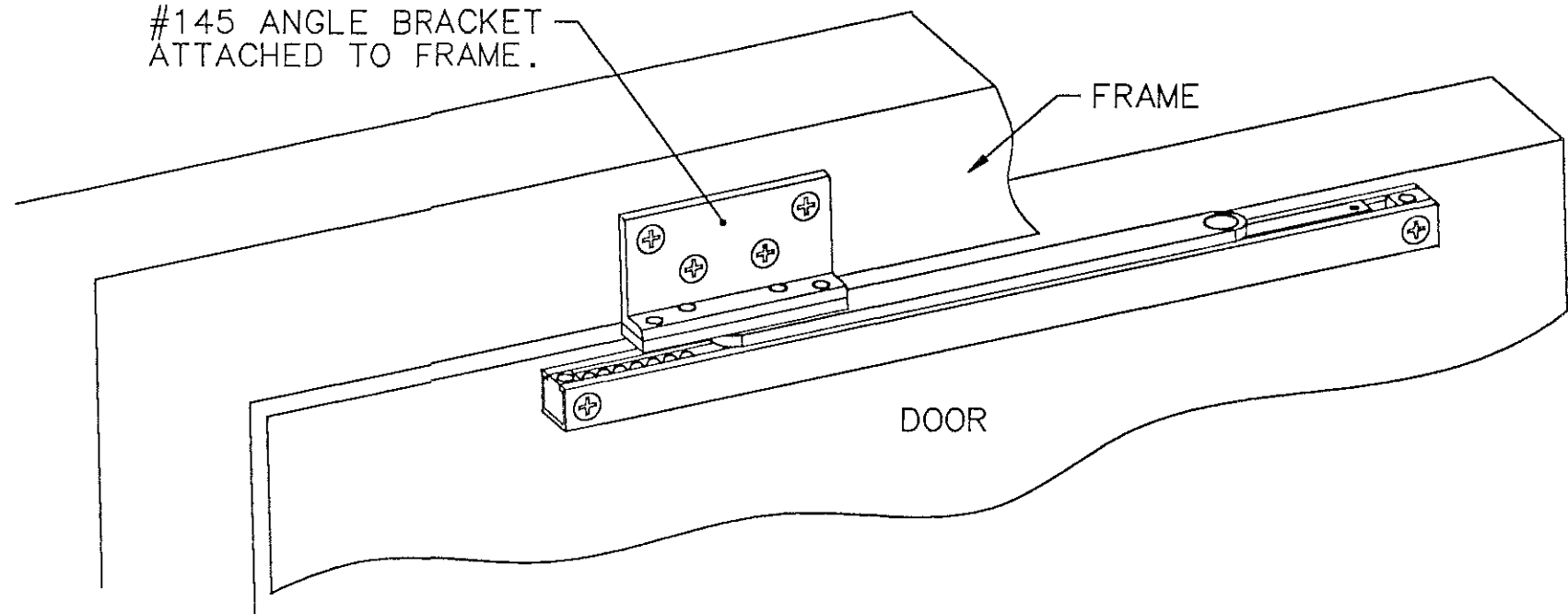
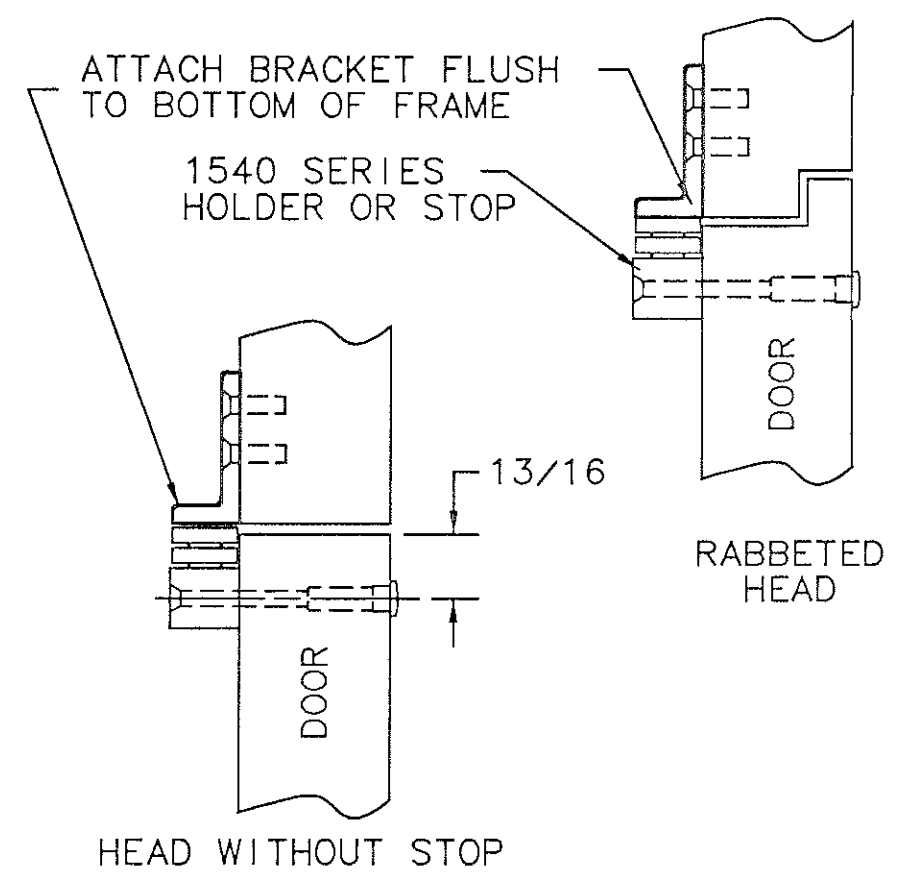


#145 ANGLE BRACKET ATTACHED TO FRAME.

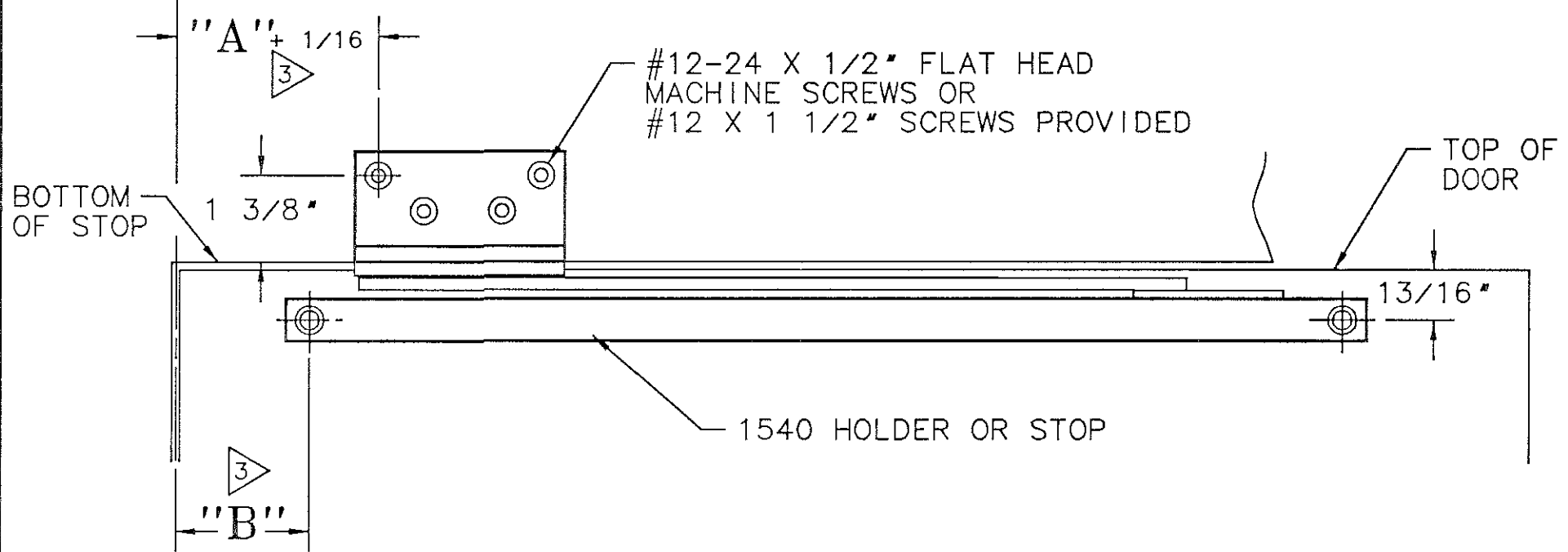


ATTACH BRACKET FLUSH TO BOTTOM OF FRAME

1540 SERIES HOLDER OR STOP



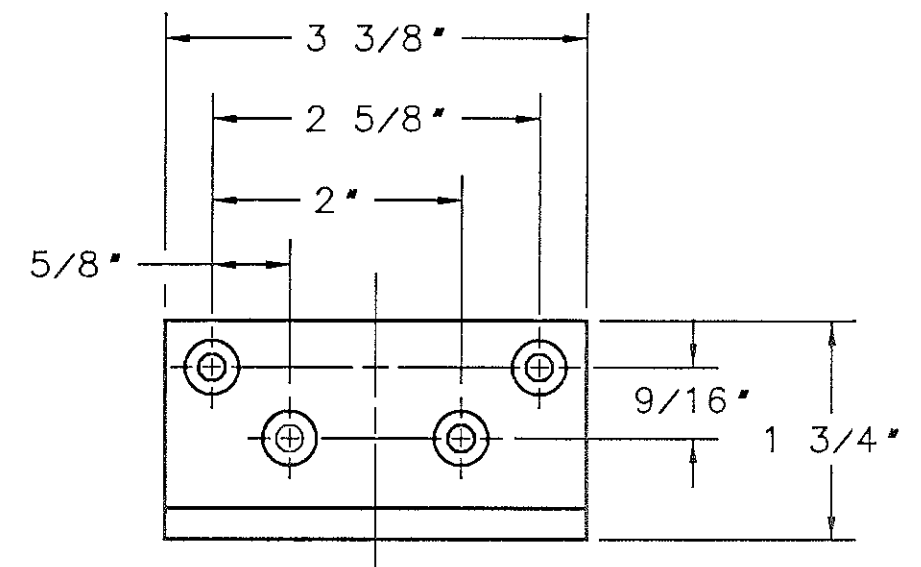
CL OF HINGE



#12-24 X 1/2" FLAT HEAD MACHINE SCREWS OR #12 X 1 1/2" SCREWS PROVIDED

TOP OF DOOR

1540 HOLDER OR STOP



145 ANGLE BRACKET DETAIL

NOTES:

1. REINFORCE METAL DOORS AND FRAMES PER ANSI A250.8 & SDI-100 12 GAUGE RECOMMENDED.
2. LEFT HAND SHOWN RIGHT HAND OPPOSITE.
3. FOR "A" AND "B" DIMENSIONS AND 1540 INSTALLATIONS, SEE TEMPLATES A7488, A7489, A7490 OR A5749.

SARGENT® Manufacturing Company
100 Sargent Drive New Haven, CT 06511

DATA SHEET: 1546-1549 SERIES
HOLDERS & STOPS x 145 ANGLE
BRACKET (FLUSH FRAME)

EFFECTIVE DATE
APRIL 02
TEMPLATE NO.
A5751 C