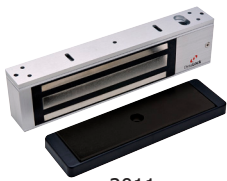


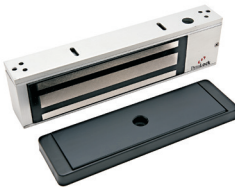
## 2000 Series 1200 Lb.



2011



2012



2011-390



2022



NYC MEA  
#23-92-E

CSFM

Electromagnetic locks, surface mounted for outswing or inswing single or double doors.

Size: 1-1/2"D x 2-3/4"H x 11"L Single or 22"L Double  
1-1/2"D x 2-3/4"H x 10-1/2" L (2011-390 only)

Multi-voltage auto-sensing 12/24 VAC/VDC

Current Draw: 374 mA @ 12VDC Single / 748 mA Double

210 mA @ 24VDC Single / 420mA Double

Adjustable Relock Time Delay (Former TD Option) is standard on all models.

MODEL	PRODUCT	FINISH	WEIGHT
<b>2011</b>	Single Electromagnetic Lock Outswing	US28	10 Lbs.
<b>2012</b>	Single Electromagnetic Lock Pair Outswing	US28	10 Lbs.
<b>2011-390</b>	Locknetics 390+ Exact Retro-fit	US28	10 Lbs.
<b>2022</b>	Double Electromagnetic Lock Outswing	US28	20 Lbs.
<b>2022-392</b>	Locknetics 392+ Exact Retro-fit	US28	20 Lbs.
<b>2011TJ20</b>	Single Electromagnetic Lock Inswing	US28	13 Lbs.
<b>2012TJ21</b>	Single Electromagnetic Lock Pair Inswing	US28	13 Lbs.
<b>2022TJ22</b>	Double Electromagnetic Lock Pair Inswing	US28	26 Lbs.

### OPTIONS

- **DSM** Door Status Switch - Signals door closed or ajar.
- **DSM2** Door Status Switch - For the 2022 Series.
- **HSM** High Security Monitor. Includes the following:  
Door Status Switch - Signals door closed or ajar.  
Dynastat Force Sensor - Indicates efficient magnetic bond.  
High Security Monitor - For the 2022 Series.
- **HSM2**
- **VOP** Value Option Package. Includes the following:  
Door Status Switch - Indicates door closed or ajar.  
Dynastat Force Sensor - Indicates efficient magnetic bond.  
Anti-Tamper Switch - Signals removal of wiring access cover.  
Value Option Package - For the 2022 Series.
- **VOP2**
- **CLH** Custom Length Housing - See page 24.
- \* **LCB** Basic Lock Less Circuit Board
- **LED** Bi-Color LED - For local signaling of lock status.  
(Requires HSM or VOP Option. Not available on TJ models.)
- **LED2** Bi-Color LED's (2) - For the 2022 Series. (Requires HSM2 or VOP2 Option. Not available on TJ models.)
- # **LP** Low Power Coil - 12V only @ 0.16 Amps (Single Lock)
- **LP2** Low Power Coils - 12V only @ 0.32 Amps (Double Lock)
- **OFA** Offset Armature - For narrow style storefront doors.  
(When ordered with lock)
- **SF** Special Finish - Standard finish US28. Special anodized finishes see page 56.

Notes: • DSM, HSM, VOP and LED options not available on the 2012 Series.  
\* DSM, HSM, VOP and LED options not available with the LCB option.  
# LP option may not be combined with HSM or VOP options.