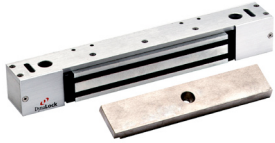


## 2268 Series 1200 Lb. Classic Low Profile



2268-10



2268-15



2268-20



2268-TJ10



2268-TJ20

"Classic" low profile electromagnetic locks, surface mounted for single and double outswing or inswing doors. Retrofits some existing locks.

Size: 2-3/16"D x 2"H x 14"L Single or 25"L Double

Multi-voltage field-selectable 12/24 VDC

Current Draw: 583 mA @ 12VDC Single / 1166 mA Double

335 mA @ 24VDC Single / 670 mA Double



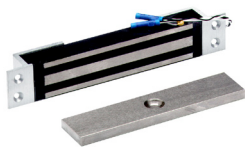
MODEL	PRODUCT	FINISH	WEIGHT
<b>2268-10</b>	Single Electromagnetic Lock Outswing	US28	9 Lbs.
<b>2268-10-DSE</b>	Single Lock Outswing, 24VDC, With DYN Option	US28	9 Lbs.
<b>2268-15</b>	Single Electromagnetic Lock Pair Outswing	US28	9 Lbs.
<b>2268-20-DSE</b>	Double Lock Outswing, 24VDC, With DYN2 Option	US28	18 Lbs.
<b>226820</b>	Double Electromagnetic Lock Pair Outswing	US28	18 Lbs.
<b>2268-TJ10</b>	Single Electromagnetic Lock Inswing	US28	12 Lbs.
<b>2268-TJ20</b>	Double Electromagnetic Lock Pair Inswing	US28	24 Lbs.

### OPTIONS

- ATS** Anti-Tamper Switch - Signals removal of the housing cover.
- **DSM** Door Status Switch - Signals door closed or ajar.
- DSM2** Door Status Switch - For the 2268-20 Series.
- **DYN** Dynastat Force Sensor - Indicates efficient magnetic bond.
- DYN2** Dynastat Force Sensor - For the 2268-20 Series.
- **LED** Bi-Color LED - For local signaling of lock status.  
(Requires DYN Option)
- LED2** Bi-Color LED's (2) - For the 2268-20 Series.  
(Requires DYN2 Option)
- SF** Special Finish - Standard finish US28. Special anodized finishes see page 56.
- TD** Time Delay - 1-60 seconds. For 2268-10 & 2268-15 only.
- TD2** Time Delay - 1-60 seconds. For the 2268-20 only.

Notes: • DSM, DYN and LED options not available on the 2268-15 Series.  
For AC Operation order #7088 Pre-wired rectifier bridge. See page 48.

## 2600 Series 650 Lb. Mortise Lock



2600

Electromagnetic lock, mortise mounted for sliding door.

Field selectable 12/24 VDC

Size: 1-1/2"W x 8-3/4"H x 1-1/8"D

Current Draw: 381 mA @ 12VDC

205 mA @ 24VDC

MODEL	PRODUCT	FINISH	WEIGHT
<b>2600</b>	Single Mortise Lock - 12/24 VDC	US28	4 Lbs.

### OPTIONS

- AMB** Armature Mounting Block
- DYN** Dynastat Force Sensor - Indicates efficient magnetic bond.
- MB** Mounting Brackets - Two piece kit.
- SF** Special Finish - Standard finish US28. Special anodized finishes see page 56.

Notes: For AC operation order #7088 Pre-wired Rectifier Bridge. See page 48.