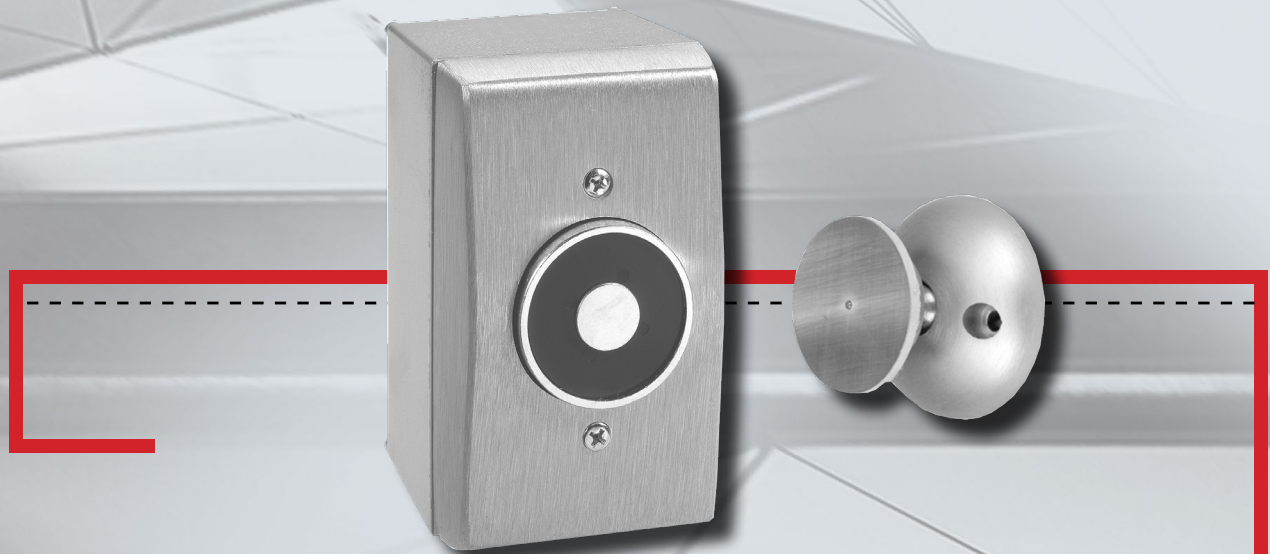


2300

Surface Wall Mount



Standard Features

- 4-⁵/₈" total projection from wall to face of door (5-⁵/₈" if using complimentary 1" extension)
- Tri-voltage units for easy stocking and installation 12V DC, 24 AC/DC or 120V AC
- Provided with one complimentary 1" extension - **No charge**
- Optional extension rods fill the gap between the magnet and door armature with **no special adapter piece required**
- 35lb. holding force
- All metal components - **No plastic parts**
- UL/ULC listed for smoke barrier or labeled fire doors
- Listed by the California State Fire Marshall
- Armature features two pivot points which each have 360° mobility to help door alignment and reduce installation time
- Positive release button alleviates residual magnetism
- Average weight per unit = 3lbs.