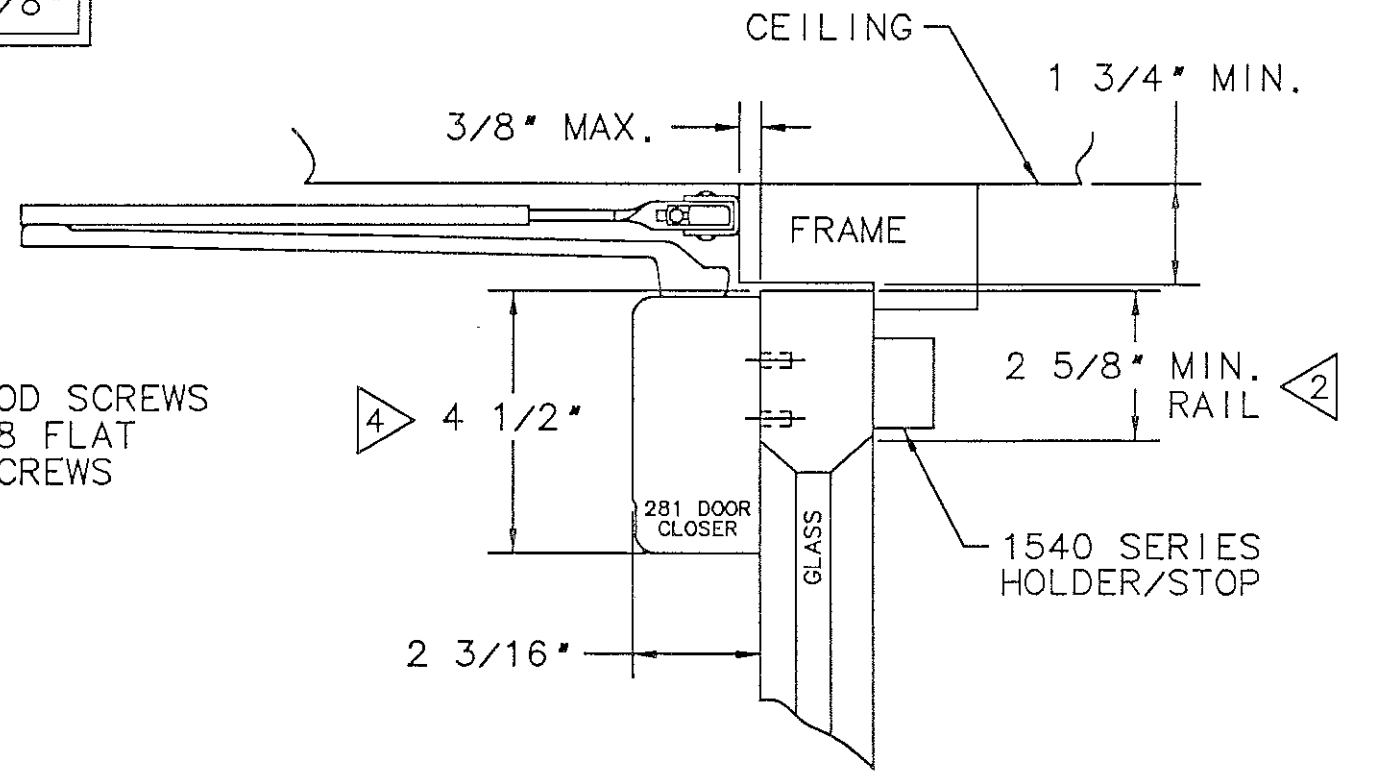
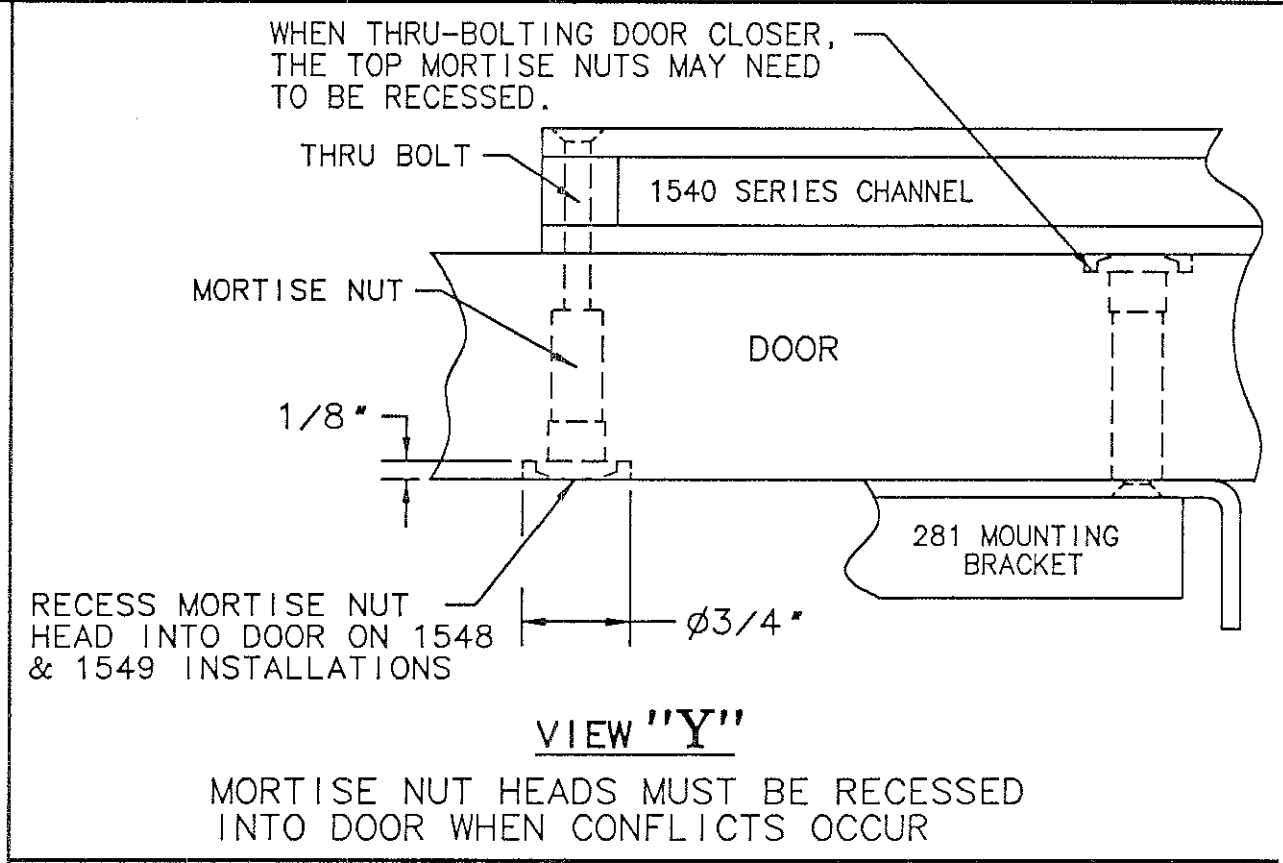
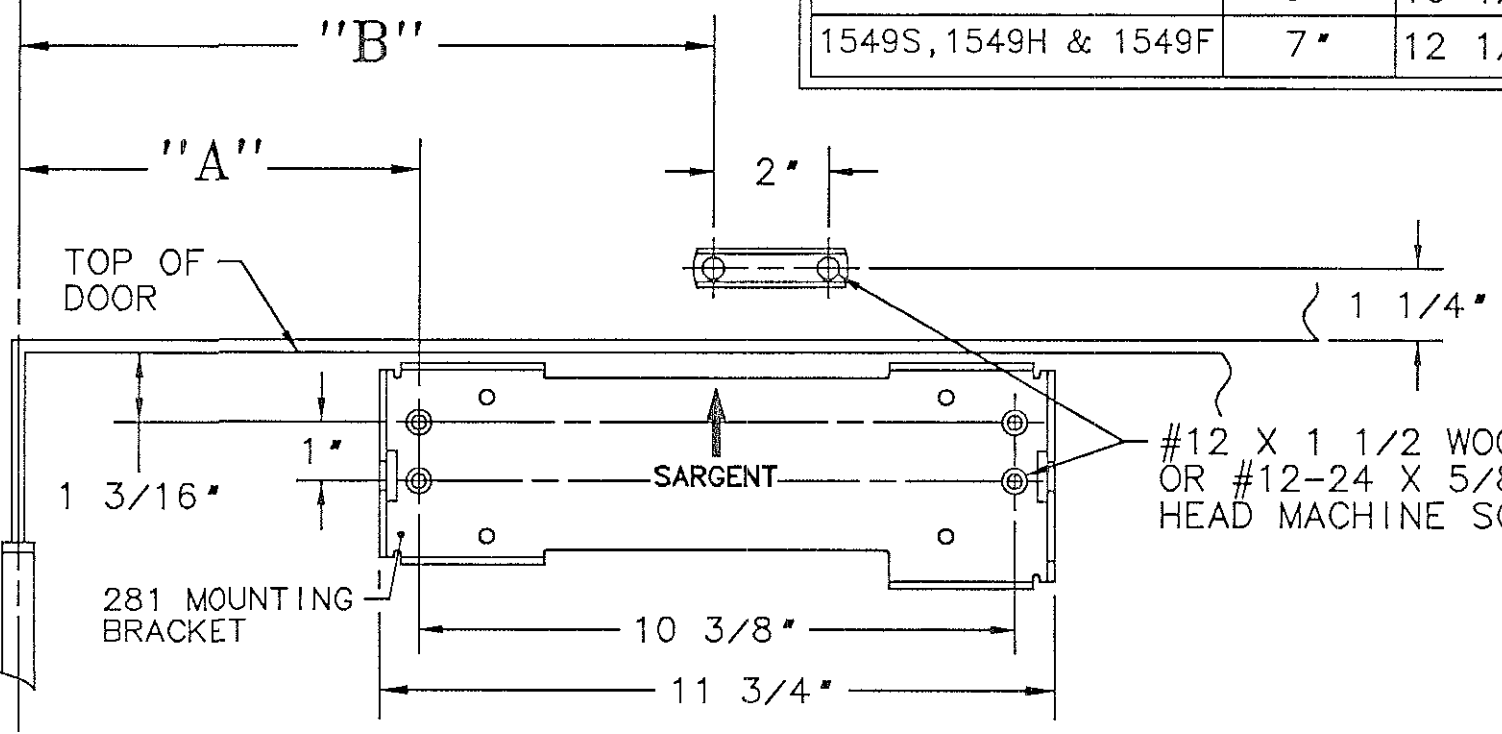


RIGHT HAND DOOR SHOWN
LEFT HAND OPPOSITE

HOLDER/STOP MODEL NO.	DIM "A"	DIM "B"
1546S, 1546H & 1547F	7"	12 1/8"
1547S, 1547H & 1547F	7"	12 1/8"
1548S, 1548H & 1548F	5"	10 1/8"
1549S, 1549H & 1549F	7"	12 1/8"



NOTES

1. REINFORCE METAL DOORS AND FRAMES PER ANSI A250.8 AND SDI-100 STANDARDS, 12 GAUGE RECOMMENDED.
2. FOR THIN TOP RAIL DOORS, USE 281-D DROP BRACKET. SEE TEMPLATE A7244
3. FOR 1546-1549 INSTALLATION, SEE TEMPLATES A7488 - A7490.
4. 281-J COVER PLATE MAY BE USED WHEN CLOSER IS VISIBLE THROUGH GLASS.

SARGENT® Manufacturing Company 100 Sargent Drive New Haven, CT 06511	
DATA SHEET: 281 SERIES CLOSER WITH STANDARD APPLICATION O ARM & 1546-1549 SERIES HOLDER/STOP	EFFECTIVE DATE APRIL 02 TEMPLATE NO. A7514 B