

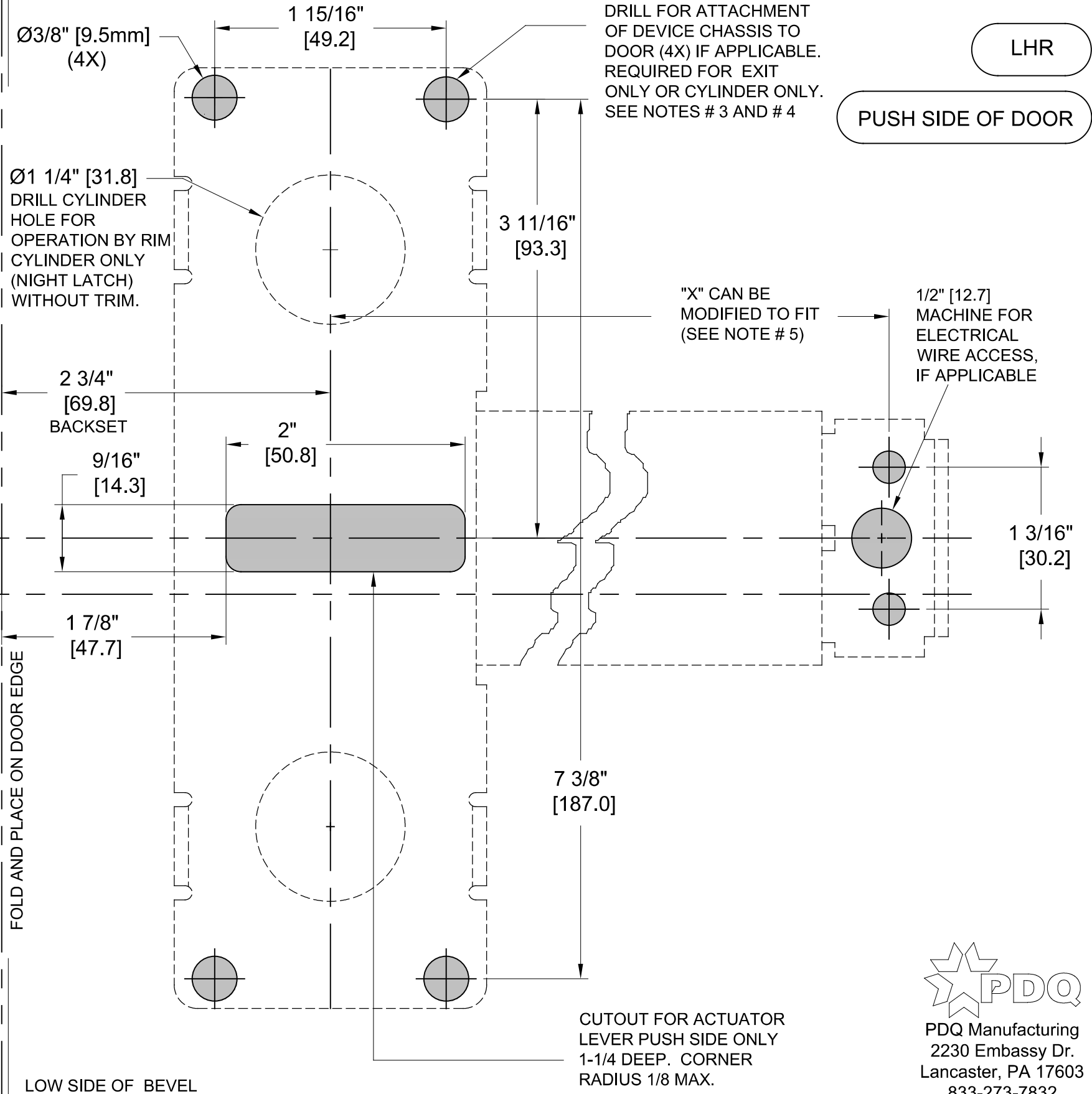
6200 Mortise Exit Device

TEMPLATE: 629323

REV. 2 11-21-19

Door Type: Hollow Metal, Wood or Composite- Square or Beveled Edge Door
 Door Thickness: 1 3/4" [44.5]
 Backset: 2 3/4" [60.3]
 Strike: Non-Handed Fire/Panic
 Machine Screws: #7 or 13/64" [5.1] - Drill and 1/4-20 Tap
 Wood Screws: Use 5/32" [4.0] Drill
 Sex Nuts: Use 3/8" [9.5] Drill

LOCK PREP
 TEMPLATE
 SEE NOTE # 6



NOTES:

1. VERIFY PRINTED TO SCALE
2. DIMENSIONS ARE IN **INCHES** [MM]
3. DOOR REINFORCEMENT REQUIRED
4. SEX NUTS MAY BE REQUIRED FOR EXIT ONLY (NO TRIM), CONSULT DOOR MANUFACTURER'S RECOMMENDATIONS
5. TEMPLATE SHOWN FOR 1-3/4" DOOR THICKNESS CONSULT FACTORY FOR OTHER DOOR THICKNESS
6. SEE SEPARATE TEMPLATES FOR EXIT DEVICE, TRIM AND STRIKE PREP. A115.1 STANDARD FOR MORTISE LOCKS
7. RECOMMENDED DIMENSION FROM FINISHED FLOOR MAY VARY BY APPLICATION, CODES OR BUILDING SPECIFICATIONS
8. ALWAYS CHECK PDQ WEBSITE FOR MOST RECENT REVISION WWW.PDQLOCKS.COM

15/32" [11.9]

☐ DEVICE

☐ MORTISE LOCK

40" [1016]
 SEE NOTE # 7

FOLD AND PLACE ON DOOR EDGE

LOW SIDE OF BEVEL

CUTOUT FOR ACTUATOR
 LEVER PUSH SIDE ONLY
 1-1/4" DEEP. CORNER
 RADIUS 1/8" MAX.



PDQ Manufacturing
 2230 Embassy Dr.
 Lancaster, PA 17603
 833-273-7832
 833-2 PDQTECH
 www.pdqlocks.com

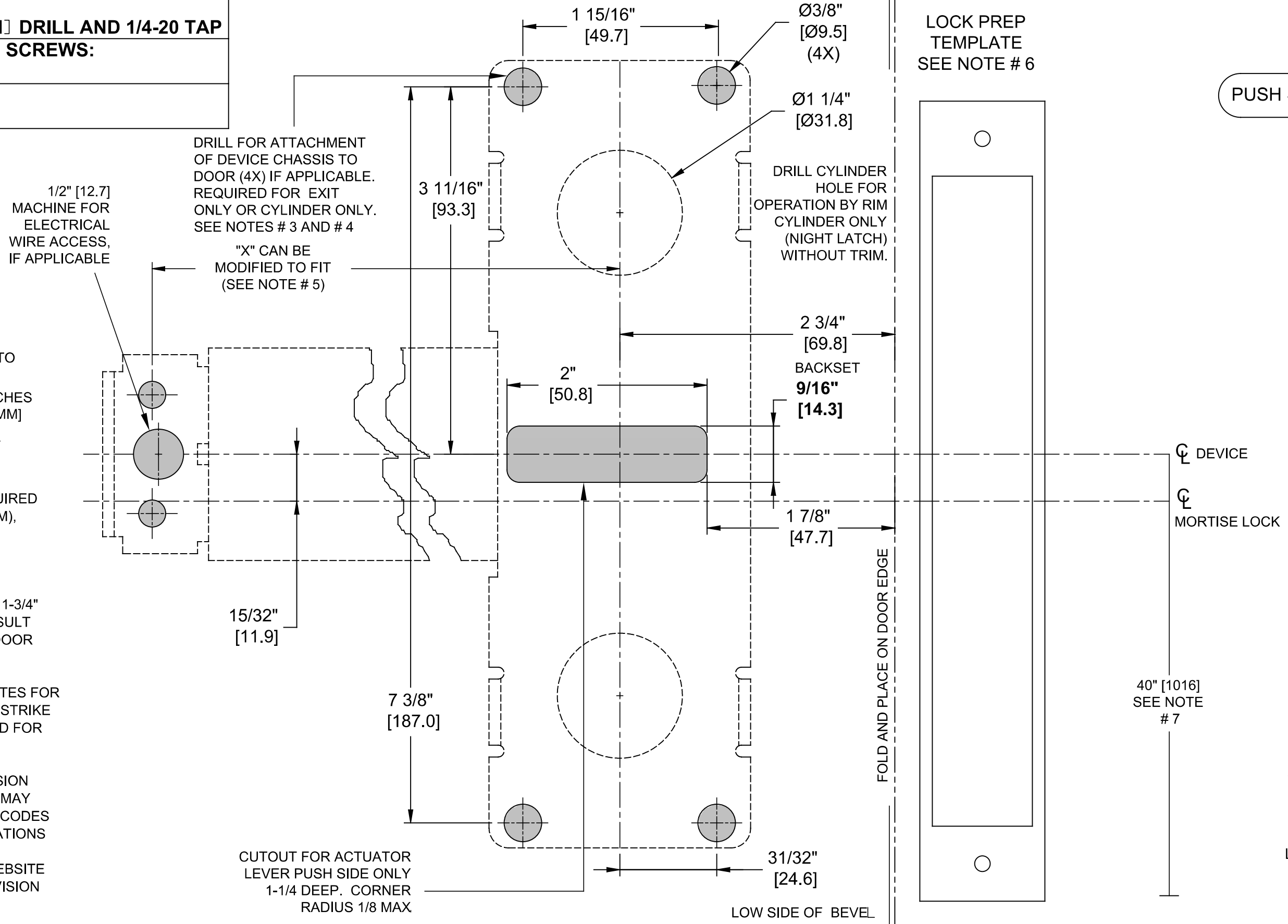
6200MR - PANIC & 6200MRF- FIRE LABELED MORTISE EXIT DEVICE MODELS

MACHINE SCREWS:
USE #7 OR 13/64" [5.1] DRILL AND 1/4-20 TAP

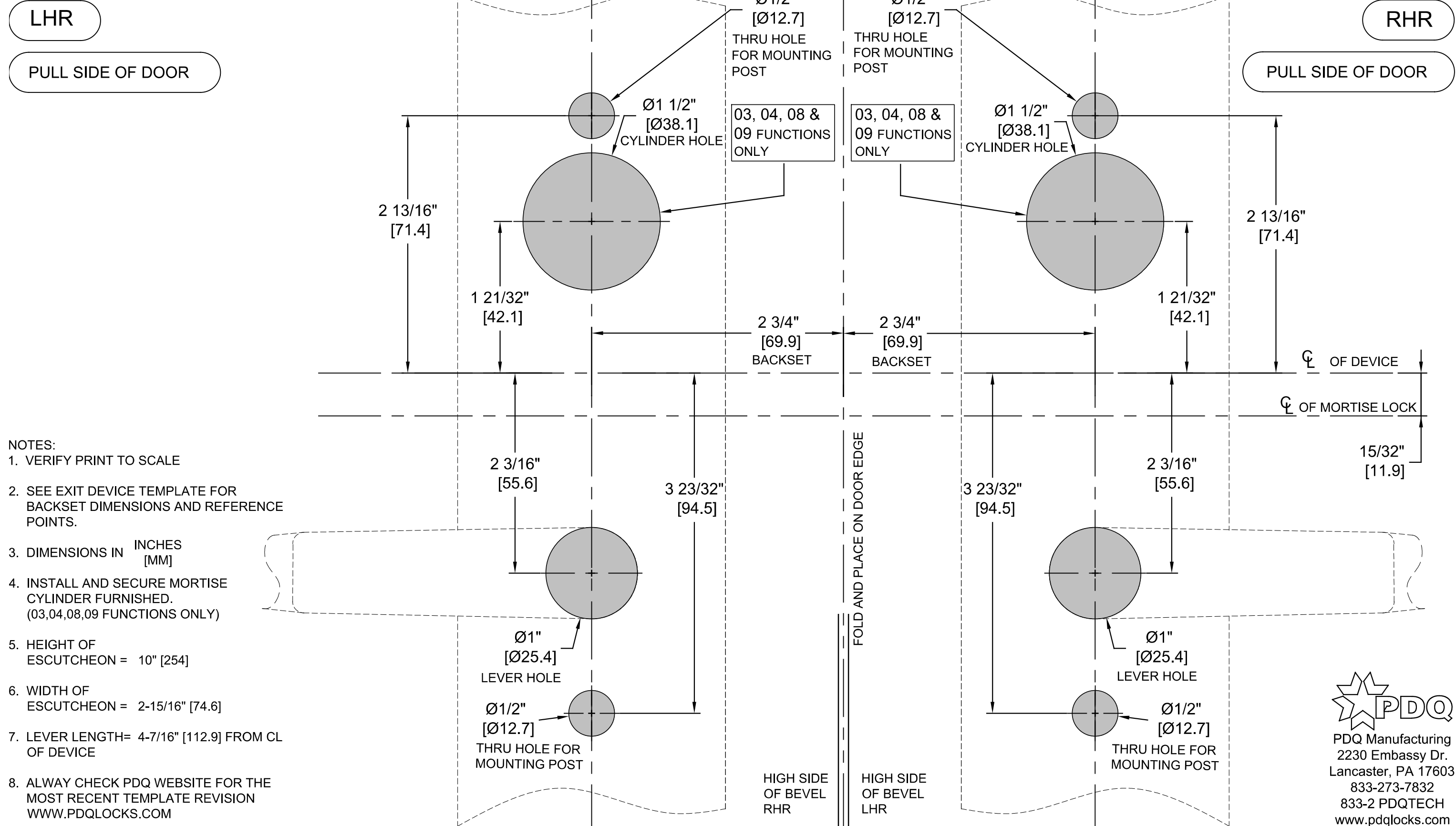
WOOD DOOR/FRAME SCREWS:
USE 5/32" [4.0] DRILL

SEX NUTS:
USE 3/8" [9.5] DRILL

- NOTES:
1. VERIFY THAT PRINTED TO SCALE
 2. DIMENSIONS ARE IN INCHES [MM]
 3. DOOR REINFORCEMENT REQUIRED
 4. SEX NUTS MAY BE REQUIRED FOR EXIT ONLY (NO TRIM), CONSULT DOOR MANUFACTURER'S RECOMMENDATIONS
 5. TEMPLATE SHOWN FOR 1-3/4" DOOR THICKNESS CONSULT FACTORY FOR OTHER DOOR THICKNESS
 6. SEE SEPARATE TEMPLATES FOR EXIT DEVICE, TRIM AND STRIKE PREP. A115.1 STANDARD FOR MORTISE LOCKS
 7. RECOMMENDED DIMENSION FROM FINISHED FLOOR MAY VARY BY APPLICATION, CODES OR BUILDING SPECIFICATIONS
 8. ALWAYS CHECK PDQ WEBSITE FOR MOST RECENT REVISION WWW.PDQLOCKS.COM



6EWM 02/03/04/08/09/14 ESCUTCHEON TRIM MODEL (MORTISE ONLY) 6200 SERIES MORTISE EXIT DEVICES



- NOTES:
1. VERIFY PRINT TO SCALE
 2. SEE EXIT DEVICE TEMPLATE FOR BACKSET DIMENSIONS AND REFERENCE POINTS.
 3. DIMENSIONS IN INCHES [MM]
 4. INSTALL AND SECURE MORTISE CYLINDER FURNISHED. (03,04,08,09 FUNCTIONS ONLY)
 5. HEIGHT OF ESCUTCHEON = 10" [254]
 6. WIDTH OF ESCUTCHEON = 2-15/16" [74.6]
 7. LEVER LENGTH= 4-7/16" [112.9] FROM CL OF DEVICE
 8. ALWAYS CHECK PDQ WEBSITE FOR THE MOST RECENT TEMPLATE REVISION WWW.PDQLOCKS.COM

PDQ
 PDQ Manufacturing
 2230 Embassy Dr.
 Lancaster, PA 17603
 833-273-7832
 833-2 PDQTECH
 www.pdqlocks.com

6200MR - PANIC & 6200MRF - FIRE LABELED

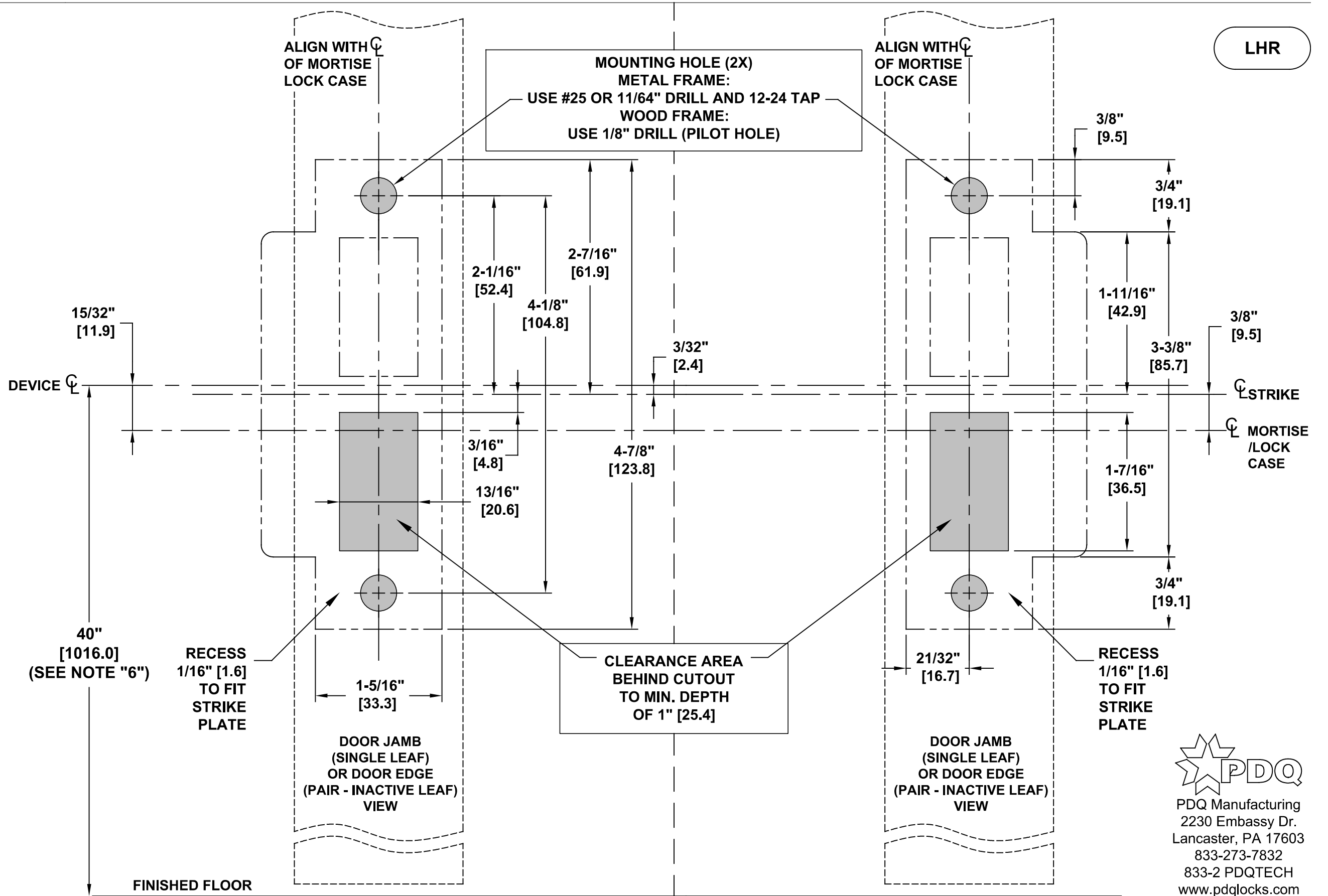
MORTISE EXIT DEVICE MODELS

6200 SERIES MORTISE STRIKE PREP

RHR

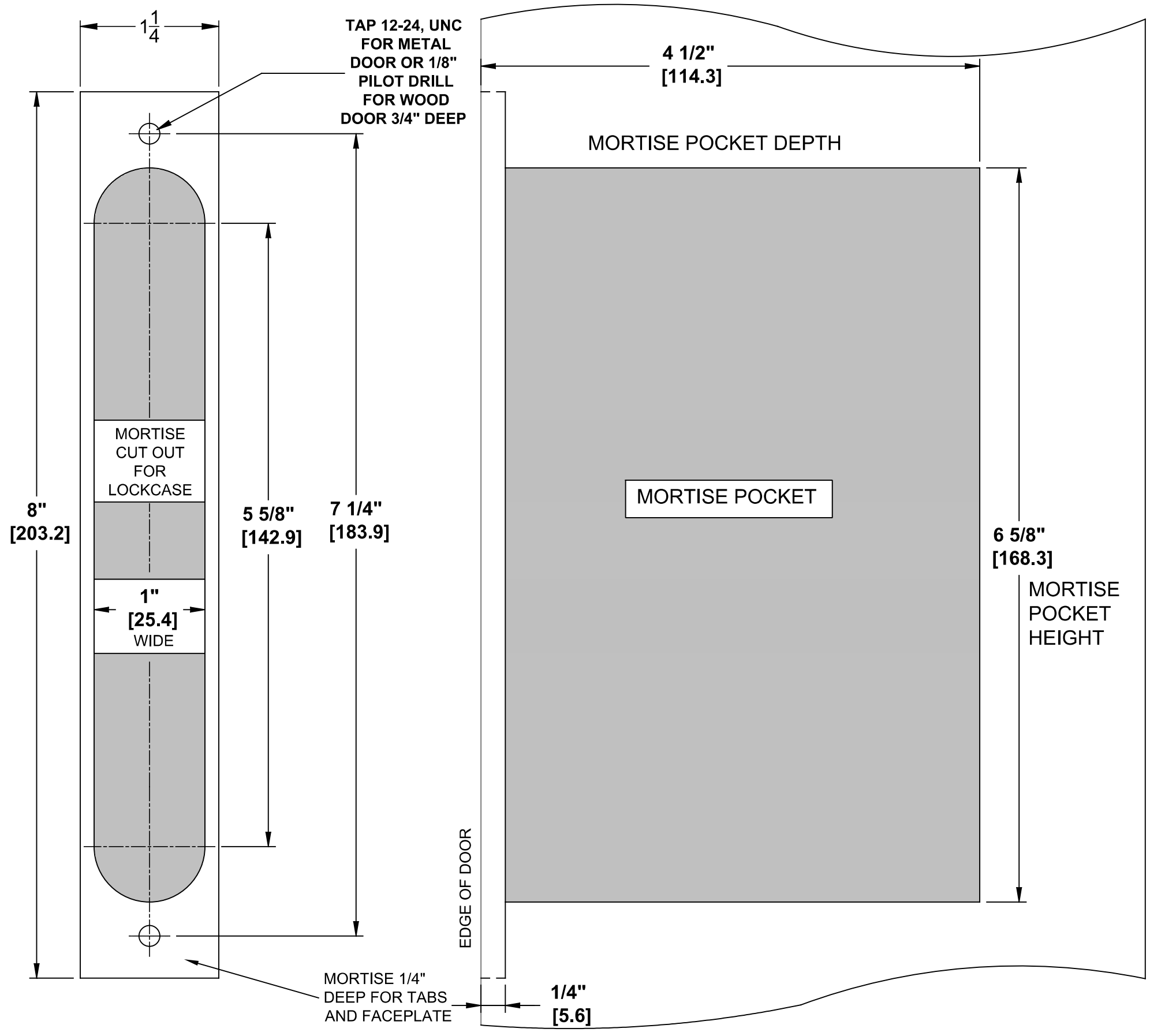
LHR

- NOTES:
1. VERIFY PRINTED TO SCALE.
 2. DIMENSIONS IN **INCHES** [MM].
 3. DOOR REINFORCEMENT REQUIRED.
 4. TEMPLATE SHOWN FOR 1-3/4" [44.5] DOOR THICKNESS.
 5. SEE SEPARATE TEMPLATE FOR DEVICE AND TRIM PREP.
 6. RECOMMENDED DIMENSION FROM FINISHED FLOOR MAY VARY BY APPLICATION, CODES, OR BUILDING SPECIFICATIONS.
 7. PROVISIONS MUST BE MADE TO ALLOW PROPER DOOR CLOSING WHEN USING DOOR SILENCERS, WEATHER STRIPPING, SOUND PROOFING, OR INSET DOOR.
 8. STRIKE LIP MUST BE TRIMMED WHEN USING OVERLAPPING ASTRAGAL ON PAIRS OF DOORS.
 9. ALWAYS CHECK PDQ WEBSITE FOR MOST RECENT REVISION AT WWW.PDQLOCKS.COM



6200MR - PANIC & 6200MRF- FIRE LABELED MORTISE EXIT DEVICE MODELS

6200 SERIES MORTISE EXIT DEVICES



NOTES:

1. VERIFY PRINTED TO SCALE
2. DIMENSIONS IN INCHES [MM]
3. ANSI STANDARD:
MR SERIES MORTISE LOCKS ARE INSTALLED FOLLOWING THE DOOR AND FRAME REQUIREMENTS FOUND IN ANSI/BHMA A156.13-2002.
4. DOORS:
REINFORCEMENT IS REQUIRED PER ANSI A115.1-1991.
5. DOOR THICKNESS:
STANDARD DOOR THICKNESS IS 1-3/4". CONSULT FACTORY FOR OTHER DOOR SIZES.
6. SILENCERS AND WEATHER STRIPPING:
PROVISIONS MUST BE MADE TO ALLOW PROPER DOOR CLOSURE WHEN USING DOOR SILENCERS, WEATHER STRIPPING OR SOUND PROOFING.
7. ALWAYS CHECK PDQ WEBSITE FOR THE MOST RECENT TEMPLATE REVISION AT WWW.PDQLOCKS.COM