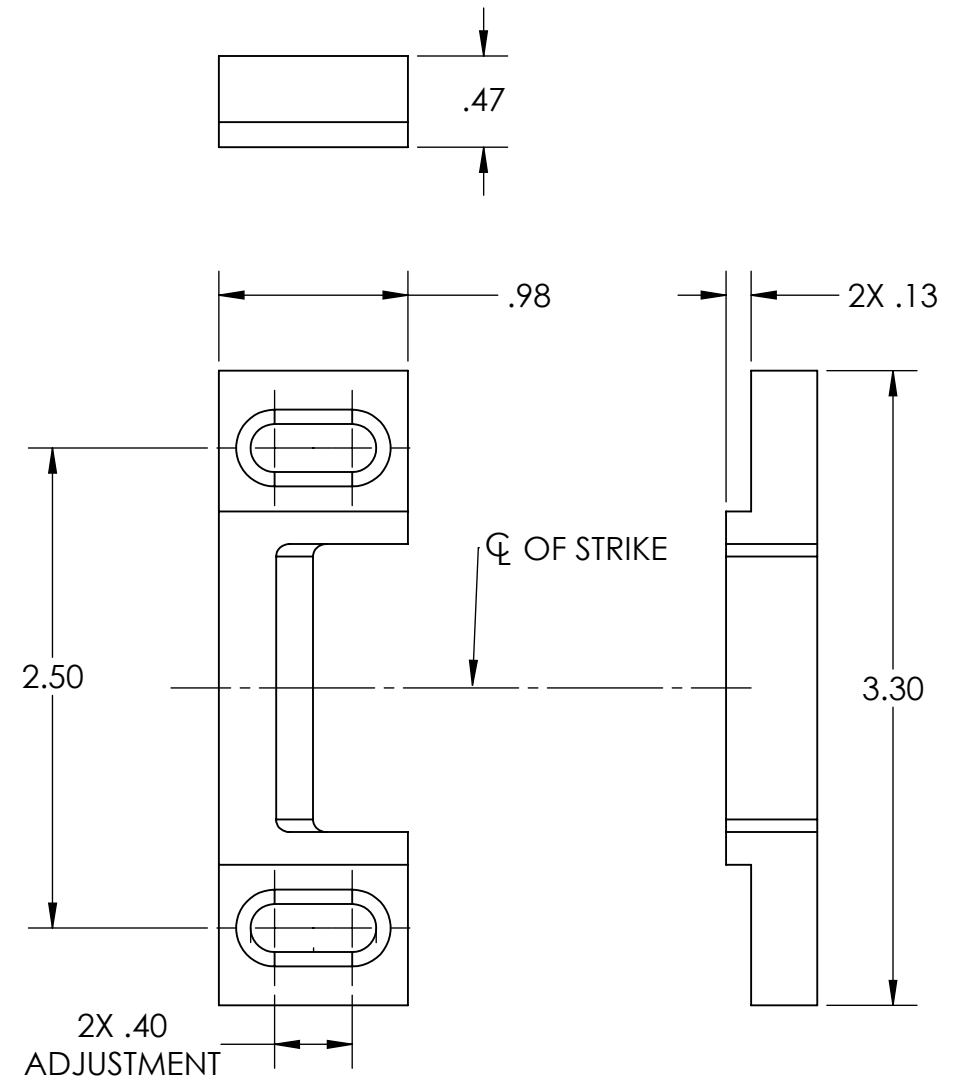


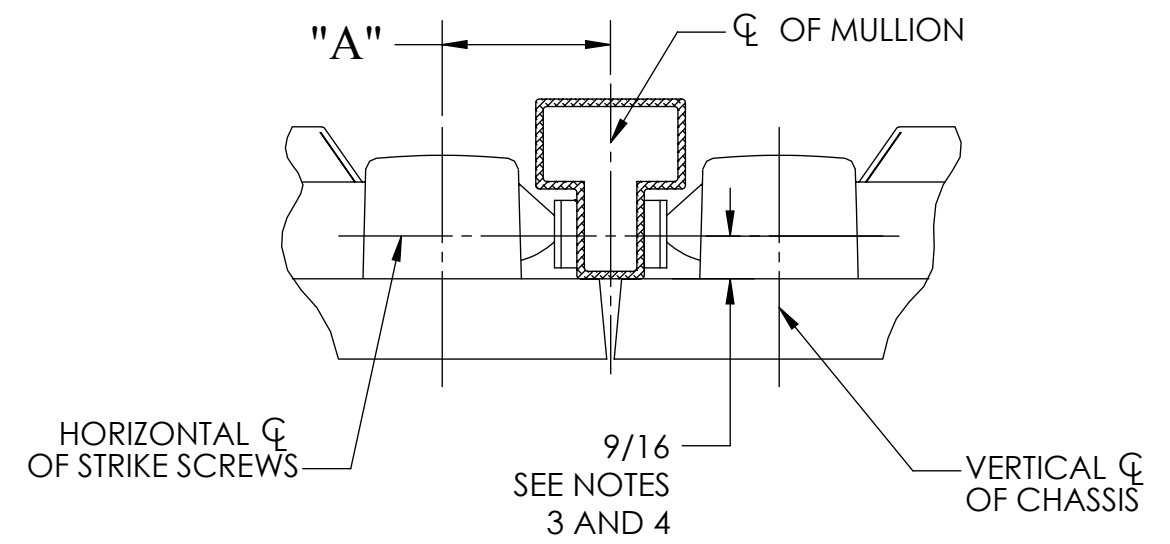
ALUMINUM MULLION	
REQUIRED BACKSET	
EXIT DEVICE	BACKSET "A"
2800, 3800 5100, 5800 8800, 9800	2 3/4"
6500, 8500	2"

STEEL MULLION	
REQUIRED BACKSET	
EXIT DEVICE	BACKSET "B"
2800, 3800 5100, 5800 8800, 9800	3 1/8"
6500, 8500	2 3/8"



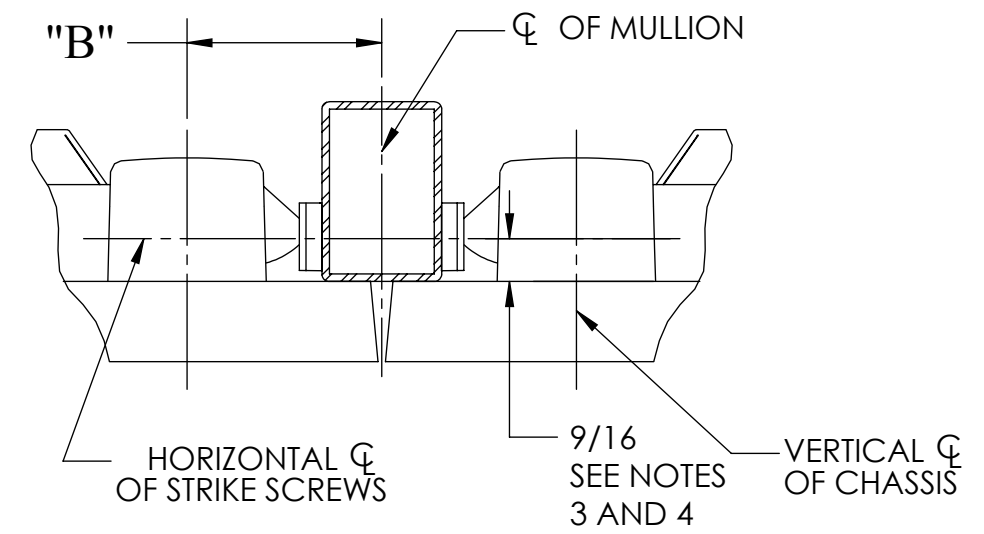
ALUMINUM MULLION APPLICATIONS

980, L980, 980A, L980A



STEEL MULLION APPLICATIONS

EL-980, 980S, L980S



1. TOLERANCES: FRACTIONAL $\pm 1/64"$, DECIMAL $\pm .015$.
2. SEE APPROPRIATE DOOR MANUFACTURERS TEMPLATE TO MOUNT EXIT DEVICE.
3. IF DOOR SILENCERS ARE USED ON THE FRAME, DECREASE THIS DIMENSION BY SILENCER HEIGHT.
4. IF "GLASS BEAD" SHIMS ARE USED, INCREASE THIS DIMENSION BY SHIM HEIGHT (1/8" PER SHIM USED).

SARGENT ASSA ABLOY	Sargent Manufacturing Company 100 Sargent Drive New Haven, CT 06511	
	DOOR MANUFACTURERS TEMPLATE: 656 STRIKE DOUBLE DOOR/MULLION APPLICATIONS	RELEASE DATE 18 APRIL 2018 TEMPLATE NO. 4715 B