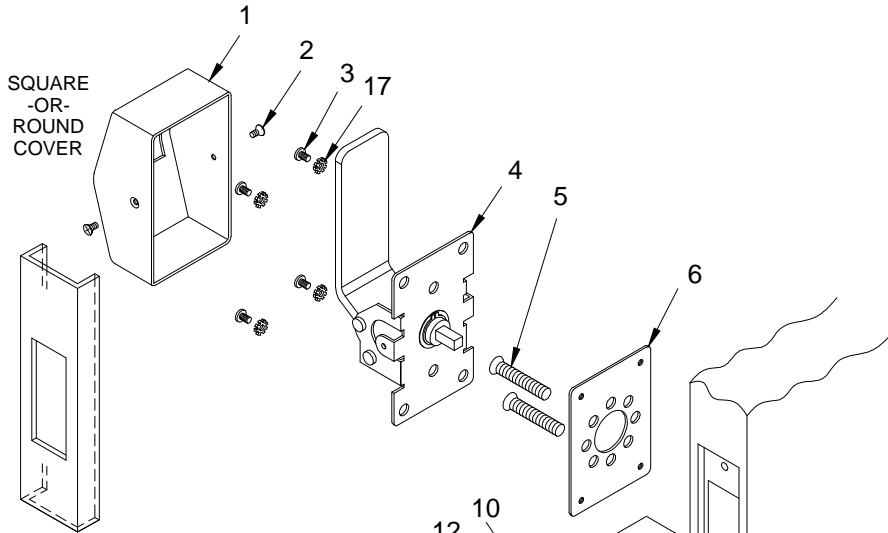


6600 "C" SERIES, ASYLUM TRIM ANGLE KNOB INSTALLATION FOR MORTISE LOCK

NOTES

1. TRIM CAN BE MOUNTED UP, DOWN, HORIZONTALLY. **
2. USES A6600 SERIES MORTISE LOCK DOOR PREP.
3. MORTISE LOCK CYLINDER & LOCK CAM NOT PROVIDED.

ITEM	QTY	PART DESCRIPTION
1	1	COVER
2	2	8-32 x 3/8" FHMS
3	4	10-32 x 1/4" PAN HD. M.S.
4	1	HANDLE ASS'Y
5	2	12-24 x 1-7/8" F.H.M.S.
6	1	ADAPTER PLATE
7	.	.
8	2	12-24 LOCK NUT
9	4	#10 STAR WASHER
10	1	MORTISE LOCK
11	1	FACE PLATE
12	2	12-24 x 3/4" PH. F.H. COM. SCW.
13	2	8-32 x 1/4" FHMS
14A	1	"C" ASYLUM TRIM ASSEMBLY
14B	1	ADAPTER PLATE
15	4	10-32 x 1/4 TORX BUTTON HD. M.S.

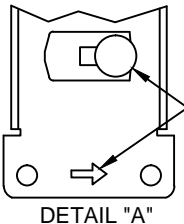


EDGE GUARD NOTE:
WHEN PREPPING THE DOOR, DETERMINE IF THE DOOR WILL RECEIVE AN EDGE GUARD. IF SO, THE EDGE GUARD SHOULD BE INSTALLED FIRST AND THEN THE PREP FOR THE MORTISE LOCK SHOULD BE MEASURED FROM THE OUTSIDE EDGE OF THE EDGE GUARD.

RIGHT HAND LOCK SHOWN FOR EXAMPLE

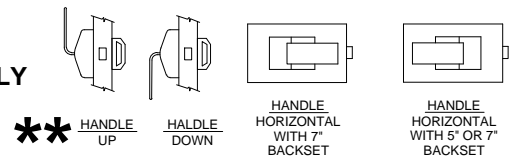
ASYLUM TRIM ASSEMBLY 14A & 14B PRE ASSEMBLED AT THE FACTORY

"C" ASYLUM HANDLE MUST BE MOUNTED IN THIS POSITION



NOTE:
BEFORE MOUNTING BASE ASSEMBLIES CAM PIN MUST BE ROTATED TOWARDS SIDE INDICATED BY ARROW STAMPED ON THE BASE.

WARNING
DO NOT MIX ASYLUM TRIM ASSEMBLY PLATES WITH ONE ANOTHER



INSTALLATION INSTRUCTIONS:

1. Prep for lock body according to mortise lock manufacturer installation. Install mortise lock (item 10) using (2) 12-24 combination screws (item 12). Then mount the face plate (item 11) using (2) 8-32 screws (item 13).
2. A) Place the pre-assembled asylum trim assembly 14A & 14B on the appropriate side of door.
B) Then place adapter plate (item 6) on outside of door and attach with (2) 12-24 screws (item 5). Do not over tighten.
3. Assemble trim:
 - A) With trim in hand. Rotate the cam assembly until the cam pin stops on the appropriate side (see Detail "A").
 - B) Place handle on the door so that spindle engages with the mortise lock and fasten with (4) pan head screws (item 3) with (4) star washer (item 9). Test handle ass'y (item 4) for latch retraction. If latch does not extend. Loosen both 12-24 screws (item 5) to adjust alignment.
 - C) Test lock for proper operation.
 - D) Place cover (item 1) over the trim and secure with (2) 8-32 screws (item 2) on each side.

PATENT No. 6,196,599 & 5,730,478

6600-C-1-00.DWG



© www.abhmfg.com
E-mail: abhinfo@abhmfg.com
Architectural Builders Hardware Mfg., Inc.
1222 Ardmore Ave., Itasca, IL 60143
630.875.9900; FAX 800.9FAXABH (932.9224)

© 2017 ABH Mfg., Inc.
printed in USA

6600-C
PAGE 1 OF 3
ISSUED 02-03-17

6600-C SERIES, HOLE PATTERN CHART

Caution: Not all holes shown below need to be drilled. Use the diagram AND the chart to determine the holes that you need to drill for your trim and function combination.

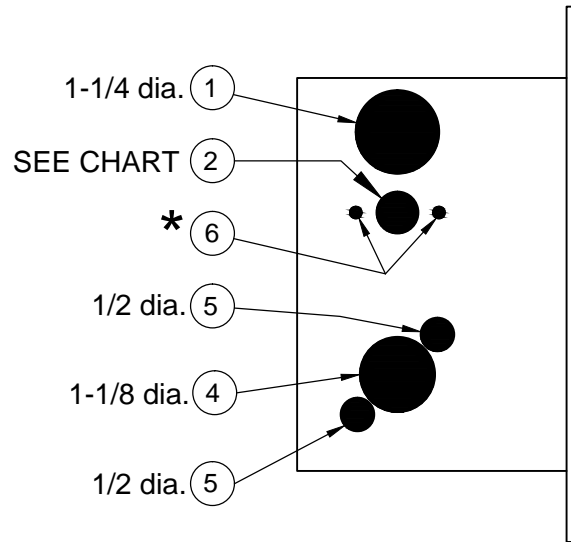
Lockset function

	Inside holes					Outside holes				
	①	②	④	⑤	⑥	①	②	④	⑤	⑥
	Cylinder 1-1/4" dia.	Turn knob 5/8" dia.	Trim 1-1/8" dia.	Thru-bolt 1/2" dia.(2)	Trim turn knob * (2)	Cylinder 1-1/4" dia.	Emergency Key 1/2" dia.	Trim 1-1/8" dia.	Thru-bolt 1/2" dia.(2)	Trim turn knob * (2)
6641 (Asylum Lock)	■		■	■		■		■	■	

* Determine trim holes based on trim type.

ADA recommends mounting centerline of lock 44" from top of finished floor.

-OR- Check local ordinance for proper height.



6600-C-2-00.DWG

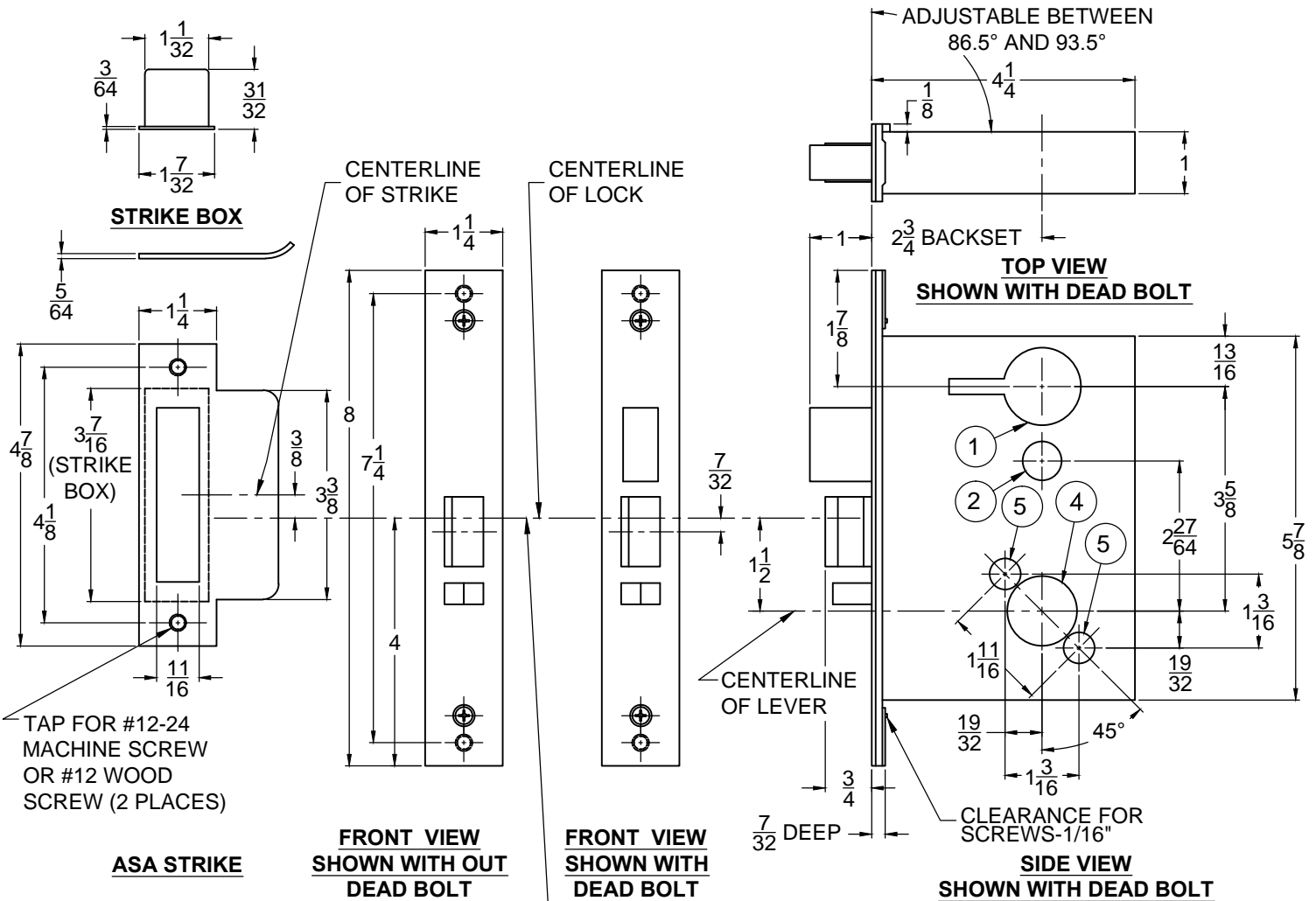


® www.abhmfg.com
 E-mail: abhinfo@abhmfg.com
 Architectural Builders Hardware Mfg., Inc.
 1222 Ardmore Ave., Itasca, IL 60143
 630.875.9900; FAX 800.9FAXABH (932.9224)

©2017 ABH Mfg., Inc.
 printed in USA

6600-C
 PAGE 2 OF 3
 ISSUED 02-03-17

6600-C SERIES, DOOR & FRAME PREP



ADA recommends mounting centerline of lock 44" from top of finished floor.
 -OR-
 Check local ordinance for proper height.

- Lock case holes:
- ① Cylinder hole-1-1/4" dia.
 - ② Turn knob-5/8" dia. / Emergency key-1/2" dia.
 - ④ Trim hole-1-1/8" dia.
 - ⑤ Thru-bolt holes- (two required) 1/2" dia.

- Notes:
- 1, Before drilling check the hole pattern chart.
 - 2, The maximum door-to-frame gap is 3/16".
 - 3, Allow 3/64" clearance for the strike box thickness.
 - 4, For metal door, lock case support is required from the door manufacturer.
 - 5, Tap for a #12-24 machine screw or drill for a #12 wood screw (a combination screw is supplied).



© www.abhmfg.com
 E-mail: abhinfo@abhmfg.com
 Architectural Builders Hardware Mfg., Inc.
 1222 Ardmore Ave., Itasca, IL 60143
 630.875.9900; FAX 800.9FAXABH (932.9224)

© 2017 ABH Mfg., Inc.
 printed in USA