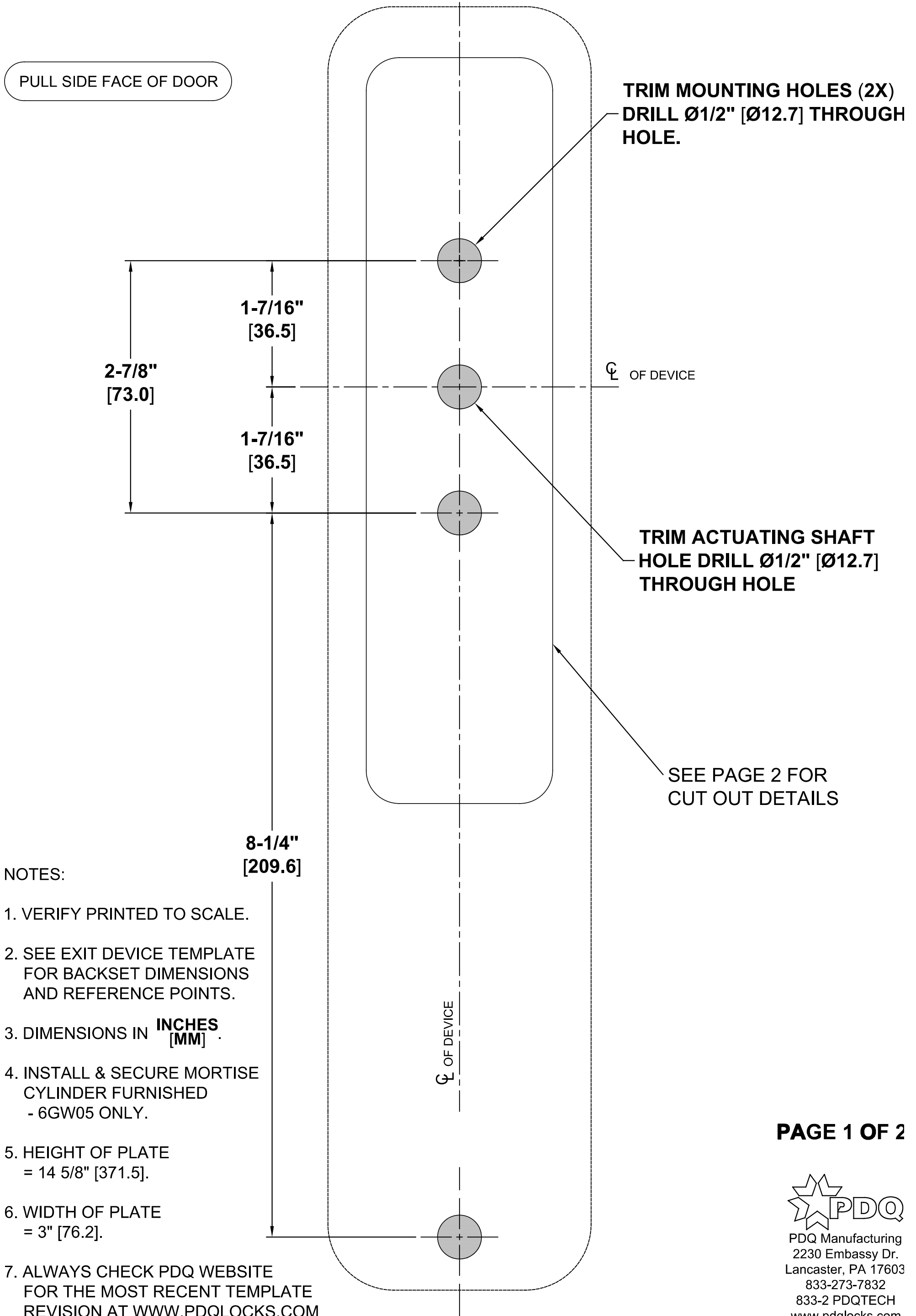


6GW05/6GW15 GRIP PULL MODELS

FOR 6200 SERIES EXIT DEVICES

TEMPLATE: 629303
REV. 5 05-05-20



NOTES:

1. VERIFY PRINTED TO SCALE.
2. SEE EXIT DEVICE TEMPLATE FOR BACKSET DIMENSIONS AND REFERENCE POINTS.
3. DIMENSIONS IN **INCHES** [MM].
4. INSTALL & SECURE MORTISE CYLINDER FURNISHED - 6GW05 ONLY.
5. HEIGHT OF PLATE = 14 5/8" [371.5].
6. WIDTH OF PLATE = 3" [76.2].
7. ALWAYS CHECK PDQ WEBSITE FOR THE MOST RECENT TEMPLATE REVISION AT WWW.PDQLOCKS.COM

PAGE 1 OF 2



PDQ Manufacturing
2230 Embassy Dr.
Lancaster, PA 17603
833-273-7832
833-2 PDQTECH
www.pdqlocks.com

6GW05/6GW15 GRIP PULL MODELS

FOR 6200 SERIES EXIT DEVICES

TEMPLATE: 629303
REV. 5 05-05-20

