

# INSTALLATION INSTRUCTIONS FOR 8200 ALP MORTISE LOCK VISUAL (185CALP) / OCCUPANCY (185PALP) INDICATORS

**SARGENT®**

**ASSA ABLOY**

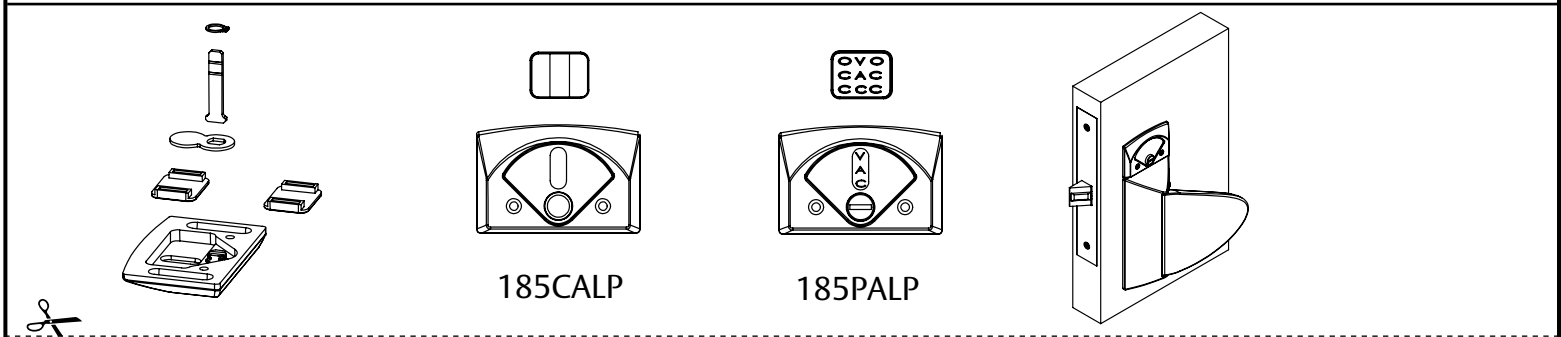
ASSA ABLOY, the global leader  
in door opening solutions

FOR INSTALLATION ASSISTANCE CALL SARGENT AT 1-800-727-5477 / [www.sargentlock.com](http://www.sargentlock.com)

185CALP

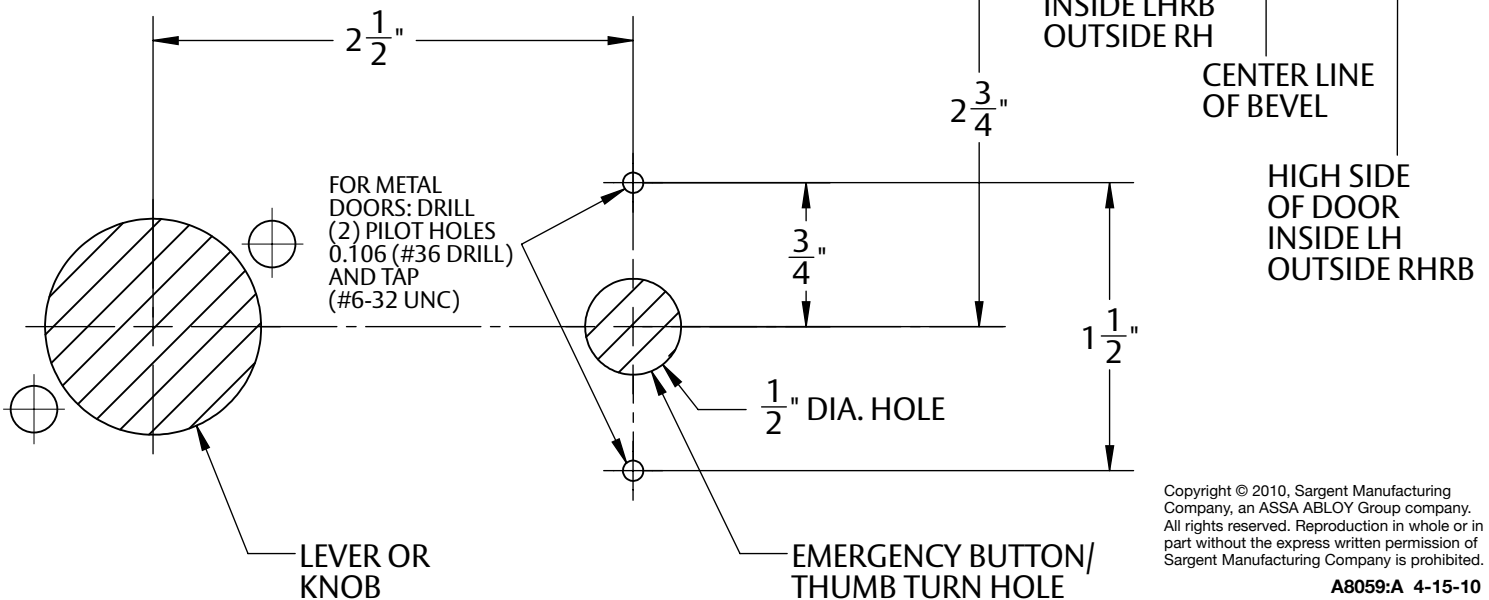
185PALP

Item No.	Part No.	Description	QTY
1	82-0592	PLAIN BUTTON	1
	82-0591	EMERGENCY BUTTON	
2	78-0486	INDICATOR HOUSING	1
3	82-4050	SLIDE ASSEMBLY (RED/WHITE)	1
	82-4051	SLIDE ASSEMBLY (VAC/OCC)	
4	82-0590	HUB PLATE	1
5	01-4552	RETAINING RING	1
6	77-1195	SPINDLE (FOR DOORS 1-3/8" THRU 2-1/4")	1
7	01-2036	#6 x 5/8" WOOD SCREW (NOT SHOWN)	2
8	01-1020	#6-32 x 1/2" MACHINE SCREW (NOT SHOWN)	2



**FOLD HERE ACCORDING TO DOOR HAND AND BEVEL**

**Installation Instructions:** Install lockbody & trim per instructions. Engage & align indicator/thumbturn with lockbody & trim. Mark pilot holes and drill (2) #6 (.204) holes for wood doors or drill & tap (2) #6-32 holes. Secure to door with screws supplied.



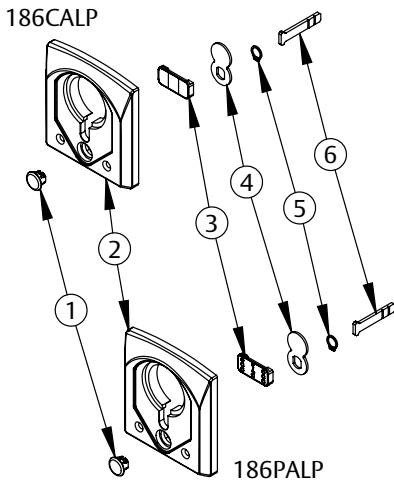
Copyright © 2010, Sargent Manufacturing Company, an ASSA ABLOY Group company. All rights reserved. Reproduction in whole or in part without the express written permission of Sargent Manufacturing Company is prohibited.

A8059:A 4-15-10

# INSTALLATION INSTRUCTIONS FOR 8200 ALP MORTISE LOCK VISUAL (186CALP) / OCCUPANCY (186PALP) INDICATORS

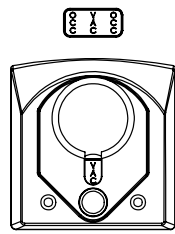
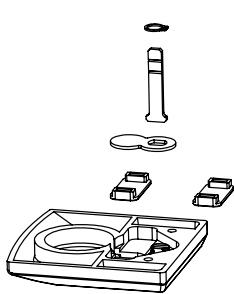
ASSA ABLOY, the global leader  
in door opening solutions

FOR INSTALLATION ASSISTANCE CALL SARGENT AT 1-800-727-5477 / [www.sargentlock.com](http://www.sargentlock.com)

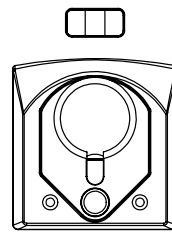


Item No.	Part No.	Description	QTY
1	82-0592	PLAIN BUTTON	1
2	78-0491	INDICATOR HOUSING (CYLINDER)	
3	82-4836	SLIDE ASSEMBLY (RED/WHITE)	1
	82-4837	SLIDE ASSEMBLY (VAC/OCC)	
4	82-0590	HUB PLATE	1
5	01-4552	RETAINING RING	1
6	77-1195	SPINDLE (FOR DOORS 1-3/8" THRU 2-1/4")	1
7	01-2036	#6 x 5/8" WOOD SCREW (NOT SHOWN)	2
8	01-1020	#6-32 x 1/2" MACHINE SCREW (NOT SHOWN)	2

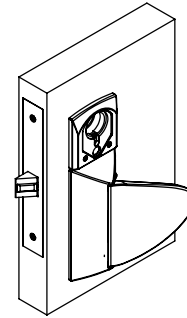
**Note:** 186PALP & 186CALP indicators are designed for use with #41(1-1/8") cylinders. For longer cylinders, shims are supplied; for #42 (1-1/4") cylinders, use (1) shim and for #43 (1-3/8") cylinders, use (2) shims.



186PALP

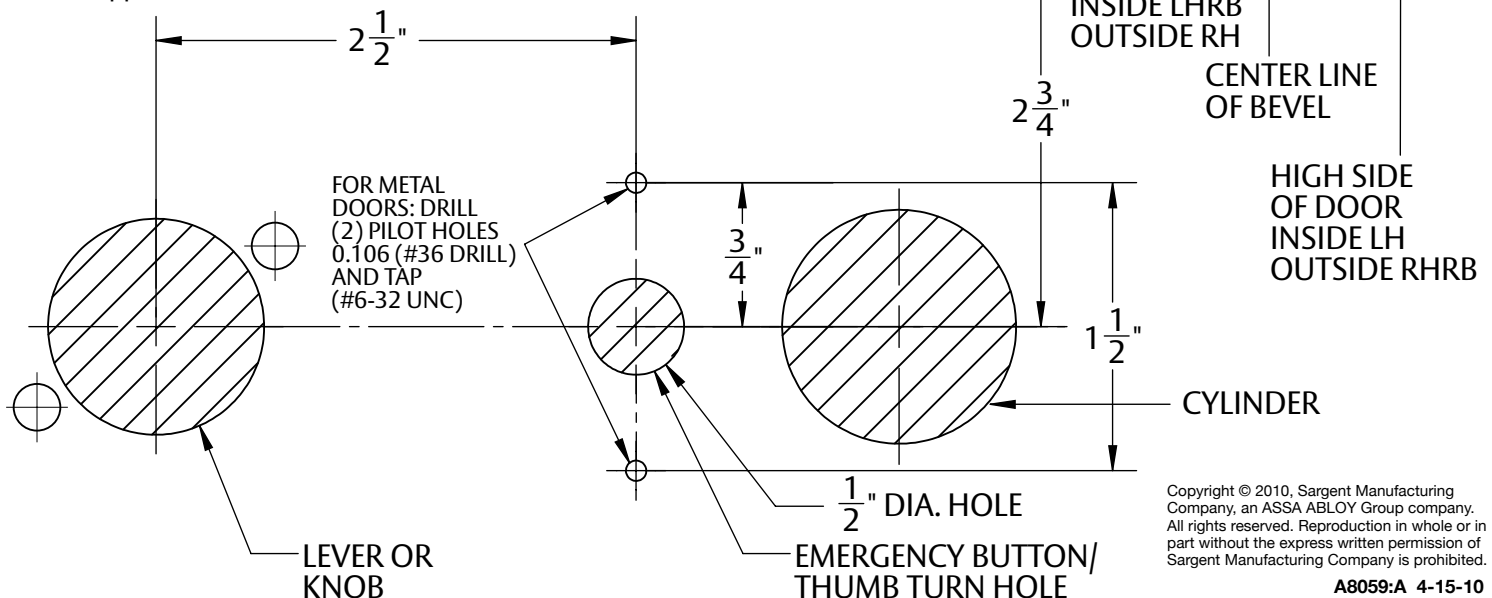


186CALP



## FOLD HERE ACCORDING TO DOOR HAND AND BEVEL

**Installation Instructions:** Install lockbody & trim - except the cylinder - per instructions. Engage & align indicator with lockbody & install cylinder through the indicator and secure. Mark pilot holes and drill (2) #6 (.204) holes for wood doors or drill & tap (2) #6-32 holes. Secure to door with screws supplied.



Copyright © 2010, Sargent Manufacturing Company, an ASSA ABLOY Group company. All rights reserved. Reproduction in whole or in part without the express written permission of Sargent Manufacturing Company is prohibited.