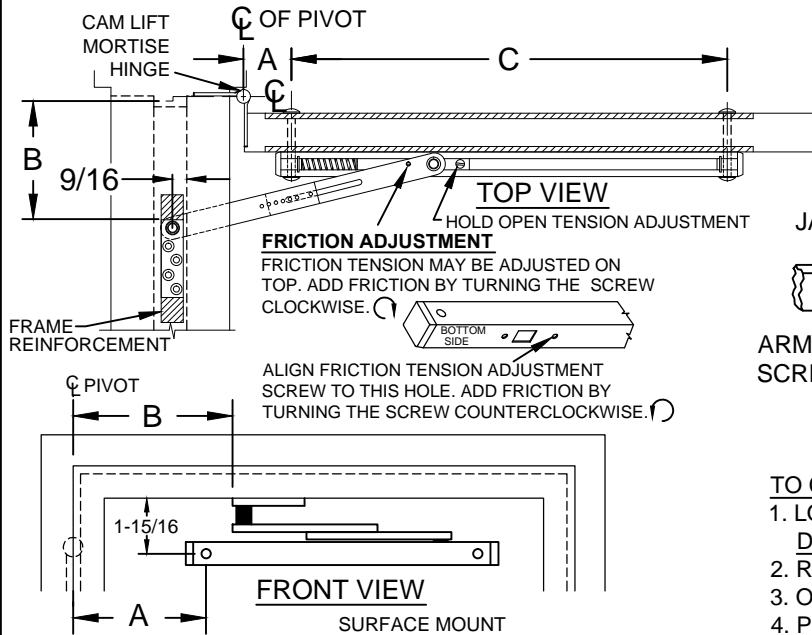
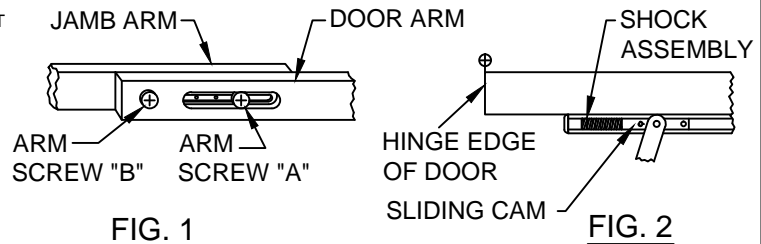


# 9000ACL SERIES OVERHEAD HOLDERS & STOPS FOR CAM LIFT HINGES - MAX. 1/2" CAM LIFT

- SURFACE MOUNT      ● HEAVY DUTY      ● ADJUSTABLE
- 9010ACL HOLD-OPEN   ● 9020ACL STOP      ● 9030ACL FRICTION

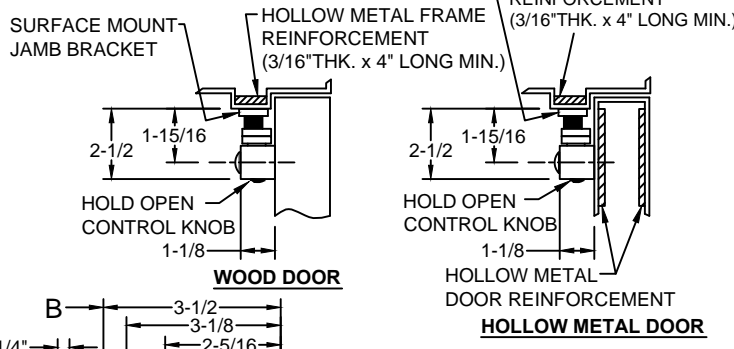


A =  $\epsilon$  OF PIVOT POINT TO  $\epsilon$  OF FIRST CHANNEL SEX BOLT  
B =  $\epsilon$  OF PIVOT POINT TO START OF JAMB BRACKET CUT-OUT  
C =  $\epsilon$  OF FIRST SEX BOLT TO  $\epsilon$  OF SECOND SEX BOLT OF CHANNEL.

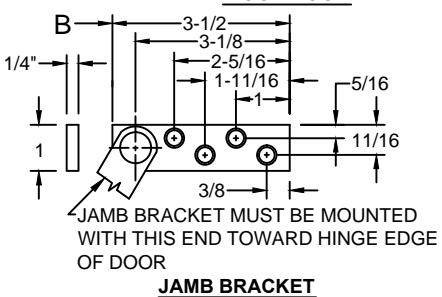


- TO CHANGE HOLD OPEN OR STOP DEGREE**
1. LOOSEN "ARM SCREW A" IN SLOTTED SECTION. SEE FIG. 1. DO NOT REMOVE.
  2. REMOVE "ARM SCREW B" ONLY. SEE FIG. 1.
  3. OPEN DOOR TO DESIRED DEGREE.
  4. POSITION "SLIDING CAM" AGAINST SHOCK ASSEMBLY. SEE FIG. 2.
  5. INSTALL "ARM SCREW B" IN ARM AND SECURE.
  6. TIGHTEN "ARM SCREW A" SECURELY.

**CAUTION:**  
ARM SCREW "B" MUST BE INSTALLED AND BOTH SCREWS "A" AND "B" SECURED OR UNIT WILL FAIL TO HOLD POSITION



SCREW DETAIL			
	QTY	WOOD	METAL
JAMB	4	● #14 x 1-1/2" FLAT HEAD WOOD SCREW	● 1/4-20 x 3/4" FLAT HEAD MACHINE SCREW
DOOR	2	● 5/16-18 x 2" TRUSS HEAD MACHINE SCREW ● 1/2 DIA. SEX BOLT	



- NOTES:**
1. FOR SINGLE ACTING DOORS ONLY.
  2. REVERSIBLE/ NON-HANDED.
  3. ALL DRILLING AND TAPPING TO BE DONE IN FIELD.
  4. ALWAYS REQUEST LATEST TEMPLATE / DRAWINGS FOR NEW INSTALLATIONS.
  5. ALL DIMENSIONS ARE IN INCHES.
  6. DRAWING IS NOT TO SCALE.
  7. IF USED ON ACOUSTICAL DOORS, CONTACT DOOR MANUFACTURER FOR INFORMATION TO AVOID COMPROMISING THE INTEGRITY OF THE DOOR.

	MODEL NO.	DOOR FRAME OPENING	SET FOR 95° H.O.		
			A	B	C
DOOR THICKNESS 1-3/4" TO 2-1/4"	● 9011ACL HOLDER ● 9021ACL STOP ● 9031ACL FRICTION	28" TO 31-15/16"	2-1/4	6-3/4	20-15/16
	● 9012ACL HOLDER ● 9022ACL STOP ● 9032ACL FRICTION	32" TO 39-15/16"	5	7-3/4	22-13/16
	● 9013ACL HOLDER ● 9023ACL STOP ● 9033ACL FRICTION	40" TO 43"-15/16"	10-5/8	9-5/8	25-5/8
CAM LIFT HINGES 1/2" MAX. LIFT	● 9014ACL HOLDER ● 9024ACL STOP ● 9034ACL FRICTION	44" TO 54"	13-5/8	10-1/2	26-7/8



www.abhmfg.com  
E-mail: abhinfo@abhmfg.com  
Architectural Builders Hardware Mfg., Inc.  
1222 Ardmore Ave., Itasca, IL 60143  
630.875.9900; FAX 800.9FAXABH (932.9224)

© 2019 ABH Mfg., Inc.  
printed in USA

9000ACL

PAGE 1 OF 1  
REVISED 09-23-19