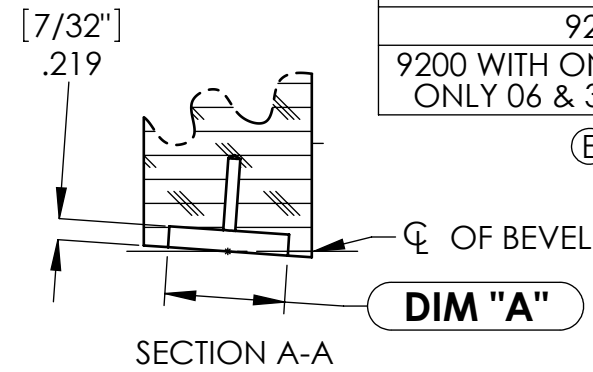


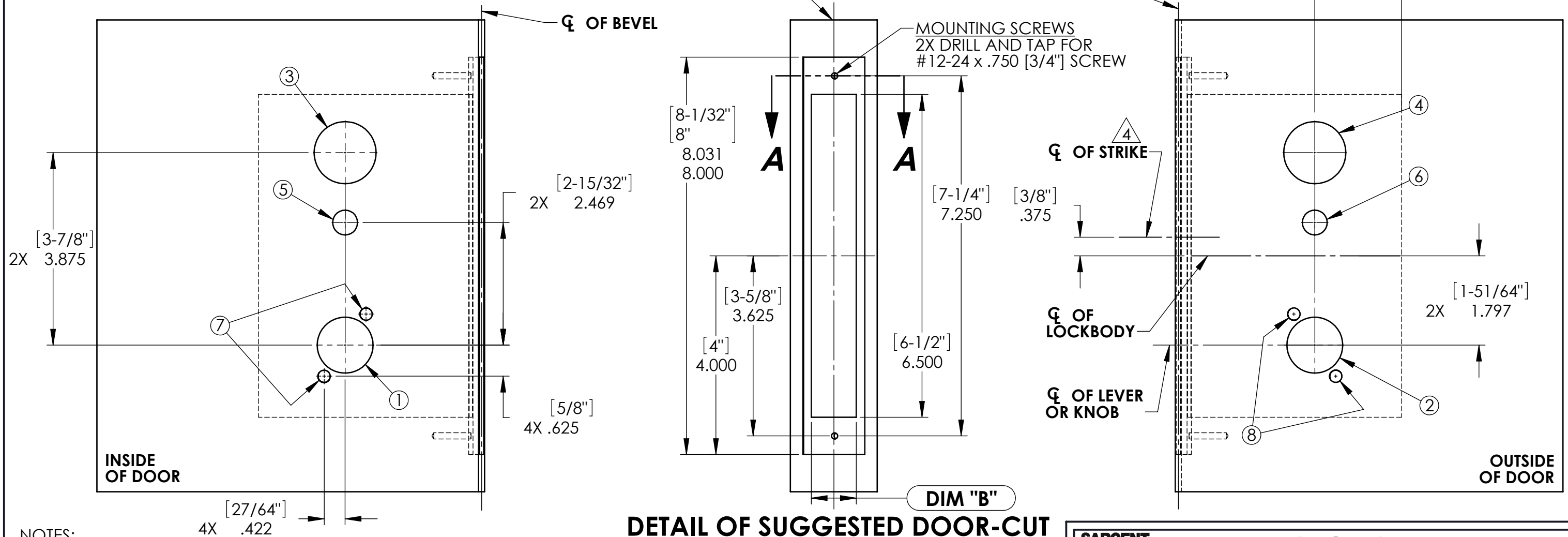
FUNCTION	REQUIRED HOLES							
	1	2	3	4	5	6	7	8
03, 21	1.125" [1-1/8"] DIA.	1.125" [1-1/8"] DIA.	1.250" [1-1/4"] DIA.	1.250" [1-1/4"] DIA.	.500" [1/2"] DIA.	.500" [1/2"] DIA.	.250" [1/4"] DIA.	.250" [1/4"] DIA.
04, 37, 55, 70, 71	■	■		■			■	■
06	■			■			■	
05*, 24, 25, 43, 45, 50	■	■		■	■		■	■
15	■	■					■	■
16, 17, 26, 38, 39, 40 .41, 49, 59, 72, 73	■	■	■	■			■	■
20				■				
22			■	■				
23			■	■	■			
35		■		■				■
65, 66	■	■			■	■	■	■

THIS TEMPLATE COVERS THE 9200 SERIES LOCKSET IN ACCORDANCE WITH THE SPECIFICATIONS INDICATED BELOW:

LOCK LINES & VARIATIONS	VARIABLE DIMENSIONS		
	DIM "A"	DIM "B"	DIM "C"
9200	1.250±.015 [1-1/4"]	.906 [29/32"]	4.125 [4-1/8"]
9200 WITH ONE-SIDED TRIM ONLY 06 & 35 FUNCTION	1.250±.015 [1-1/4"]	1.125+0/-0.062 (1-1/8")	4.125 [4-1/8"]



* ALL 05 LOCKS MANUFACTURED PRIOR TO 7/6/04 USE 55 FUNCTION DOOR PREP. CL OF DOOR



DETAIL OF SUGGESTED DOOR-CUT

NOTES:

1. ■ DENOTES HOLE REQUIRED FOR FUNCTION LISTED. (CHECK TABLE BEFORE CUTTING HOLE.)
2. REFER TO TRIM TEMPLATE FOR ADDITIONAL HOLE REQUIREMENTS.
3. SUITABLE REINFORCEMENTS REQUIRED FOR METAL DOORS.
4. FOR DETAILS, SEE STRIKE TEMPLATE 7063.
5. FOR ADDITIONAL DETAIL FOR SOLENOID OPERATED FUNCTIONS (70,71,72, & 73), SEE TEMPLATE 7065.

SARGENT ASSA ABLOY	SARGENT Manufacturing Company 100 Sargent Drive New Haven, CT 06511
	RELEASE DATE 04-MAR-11
TEMPLATE: MORTISE LOCK FOR 9200 SERIES (LOCKBODIES ONLY)	TEMPLATE NO. 4482 E