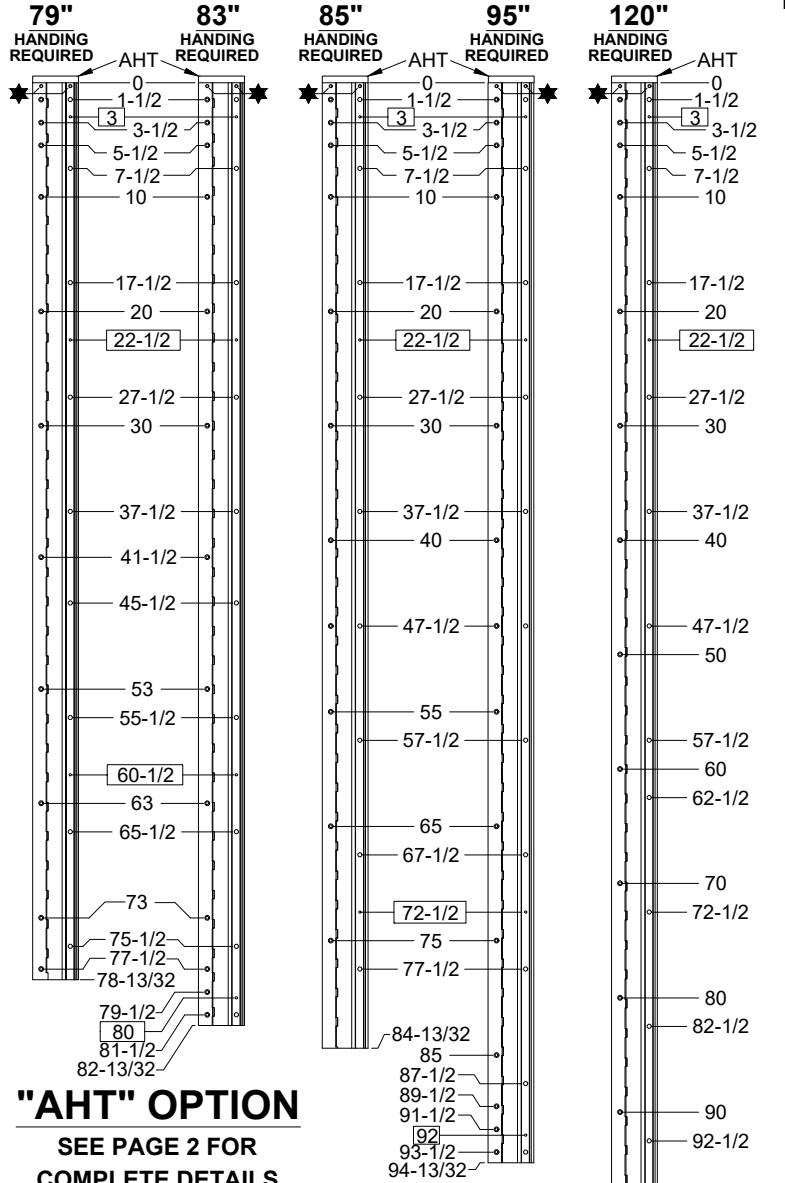
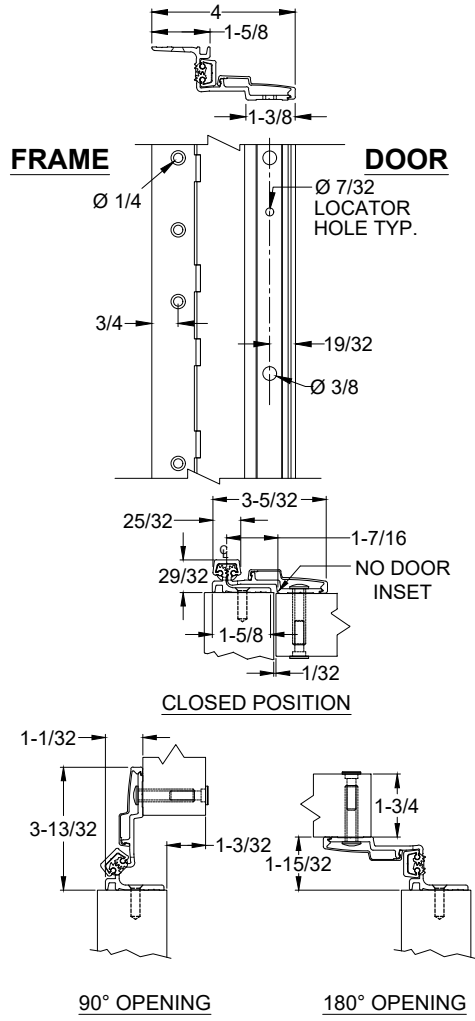
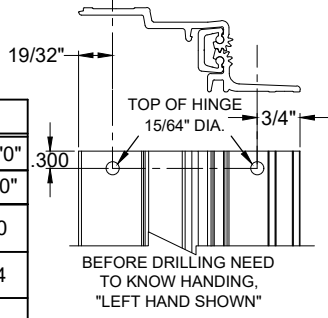


**A210 - "AHT" OPTION, ADVANCED HOSPITAL TIP, ALUMINUM GEARED HINGE, SWING CLEAR, NO INSET, FULL SURFACE**



- NOTES:**
- HINGES CUT TO CUSTOM LENGTH ARE CUT FROM THE BOTTOM. PLEASE SPECIFY HANDING.
  - ALL DIMENSIONS ARE IN INCHES.
  - ALL DIMENSIONS ARE TO CENTERLINE OF HOLES.
  - XX\" DENOTES LOCATOR HOLE.
- ★ = ADVANCED HOSPITAL TIP (AHT), AT THE TOP OF THE HINGE PER HANDING. MANUFACTURING TO ADD (2) .234 (15/64\") DIA. THRU HOLES FOR #12 SCREWS SEE DETAIL TO THE RIGHT. SEE INSTALLATION PAGE 2.

**\"AHT\" OPTION  
SEE PAGE 2 FOR  
COMPLETE DETAILS**



STANDARD HINGE SIZES & SCREW DETAIL					
NOMINAL DOOR HEIGHT	6'8"	7'0"	7'2"	8'0"	10'0"
ACTUAL HINGE LENGTH	79"	83"	85"	95"	120"
FRAME	12-24 x 3/4" PHILLIPS FLAT HEAD, UNDERCUT, SELF DRILLING, THREAD FORMING TEK MACHINE SCREW				
	13	15	15	17	20
DOOR	1/4-20 x 1-1/4" x 3/8 DIA. SEX BOLT & 1/4-20 x 1-1/4" PH. HEAD SHOULDER SCREW				
	9	10	9	11	14
	12-24 x 1" PH. PN. HD. SELF DRILLING TEK SCREW (LOCATOR HOLE)				
	3	4	3	4	4
	#12 x 1-1/2" PHILLIPS FLAT HEAD UNDERCUT SHEET METAL SCREW				
	2	2	2	2	2

A210-AHT OPTION, ADVANCED HOSPITAL TIP-1-01.DWG



www.abhmfg.com  
E-mail: abhinfo@abhmfg.com  
Architectural Builders Hardware Mfg., Inc.  
1222 Ardmore Ave., Itasca, IL 60143  
630.875.9900; FAX 800.9FAXABH (932.9224)

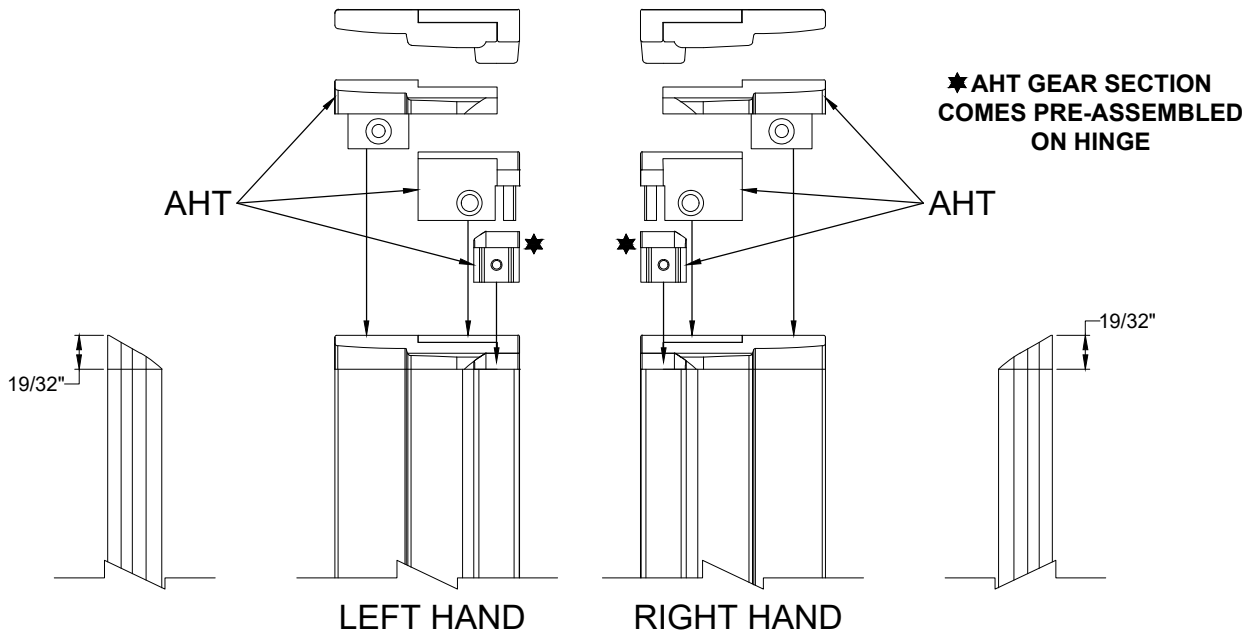
© 2019 ABH Mfg., Inc.  
printed in USA

**A210 - "AHT" OPTION  
ADVANCED HOSPITAL TIP**  
PAGE 1 OF 2  
REVISED 8-11-21

# A210 - "AHT" OPTION, ADVANCED HOSPITAL TIP, ALUMINUM GEARED HINGE, SWING CLEAR, NO INSET, FULL SURFACE

## A210 AHT (ADVANCED HOSPITAL TIP) INSTALLATION INSTRUCTIONS

1. INSTALL TOP OF HINGE 19/32" FROM THE TOP OF THE DOOR
2. BEFORE INSTALLING DOOR LEAF COVER, INSTALL FRAME AND THEN DOOR SIDE HOSPITAL TIP SECTIONS
3. INSTALL FRAME SIDE AHT SECTION
  - a. SLIDE AHT SECTION OVER HINGE LEAF, THIS WILL LINE UP WITH THE PREDRILLED HINGE LEAF THRU-HOLE
  - b. FOR METAL FRAMES, MARK HOLE LOCATION, THEN DRILL AND FASTEN THE AHT SECTION USING PROVIDED 12-24 X 7/8" PH FLAT HEAD, UNDERCUT, SELF-DRILLING, THREAD FORMING TEK MACHINE SCREW
  - c. FOR WOOD FRAMES, MARK HOLE LOCATION AND DRILL 3/16" PILOT HOLE, FASTEN AHT SECTION USING PROVIDED #12 X 1-1/2" PH FLAT HEAD, UNDERCUT WOOD SCREW
4. INSTALL DOOR SIDE AHT SECTION
  - a. SLIDE AHT SECTION INTO SLOT ON HINGE LEAF, THIS WILL LINE UP WITH THE PREDRILLED HINGE LEAF THRU-HOLE
  - b. FOR METAL DOORS, MARK HOLE LOCATION, THEN DRILL AND FASTEN THE AHT SECTION USING PROVIDED 12-24 X 7/8" PH FLAT HEAD, UNDERCUT, SELF-DRILLING, THREAD FORMING TEK MACHINE SCREW
  - c. FOR WOOD DOORS, MARK HOLE LOCATION AND DRILL 3/16" PILOT HOLE, FASTEN AHT SECTION USING PROVIDED #12 X 1-1/2" PH FLAT HEAD, UNDERCUT WOOD SCREW
5. BEFORE TIGHTENING THE SCREWS DOWN COMPLETELY, DOOR AND FRAME AHT SECTIONS SHOULD BE FLUSH WITH THE TOP OF THE DOOR.
6. INSTALL DOOR LEAF COVER.



A210-AHT OPTION, ADVANCED HOSPITAL TIP-2-01.DWG

**ABH**  
MANUFACTURING INC.

www.abhmfg.com  
E-mail: abhinfo@abhmfg.com  
Architectural Builders Hardware Mfg., Inc.  
1222 Ardmore Ave., Itasca, IL 60143  
630.875.9900; FAX 800.9FAXABH (932.9224)

© 2019 ABH Mfg., Inc.  
printed in USA

**A210 - "AHT" OPTION**  
ADVANCED HOSPITAL TIP

PAGE 2 OF 2  
REVISED 8-11-21