

# A508

## Double Swing Hinge



For use in behavioral health facilities, hospitals, correctional facilities, or any institution where it is needed to have the door swing in the opposite direction if something or someone obstructs the normal swing of the door. Used in conjunction with a stop that can be moved out of the way of the door like the ABH A509.

### Features

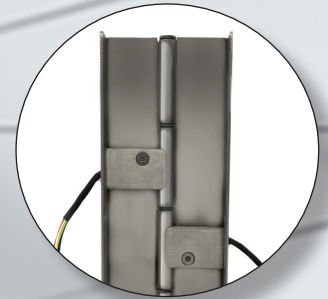
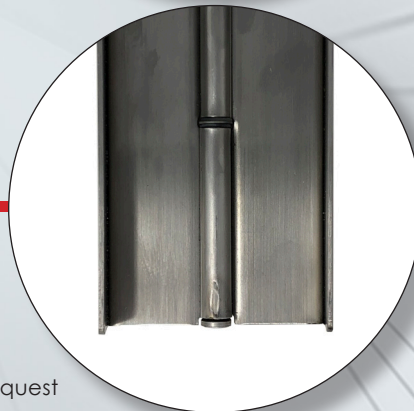
- Center Mount
- Mounted Flush to the Inside face of door
- "No see through" design
- CMS Compliant
- Material - 304 Stainless Steel

### Technical Specifications:

Hinge Material: 304 Stainless Steel  
Finishes: Satin Stainless – Other Finishes by Request  
Fasteners: Pin-In-Torx Screws  
BHMA: Meets ANSI/BHMA 156.26  
ADA: Meets barrier free requirements of ICC/ANSI A117.1-2009 and ADAAG-2010

#### Notes:

Behavioral health product applications are intended to provide safer solution than traditional applications, they do not eliminate risk.



### Options

Thru Wire