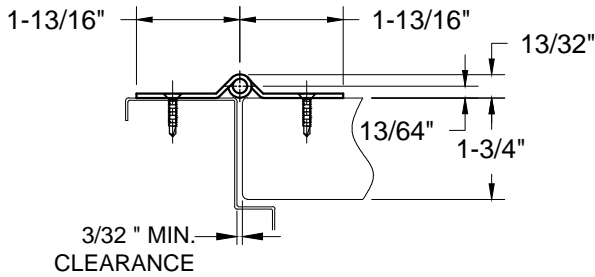
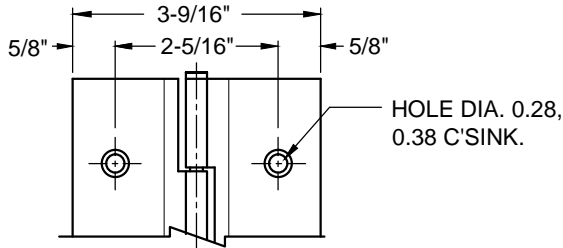
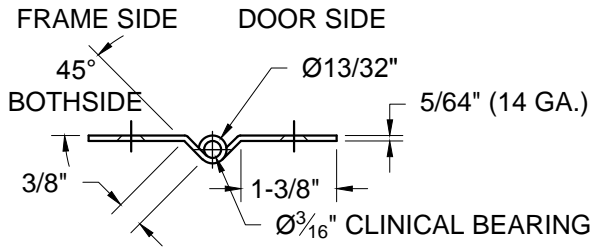
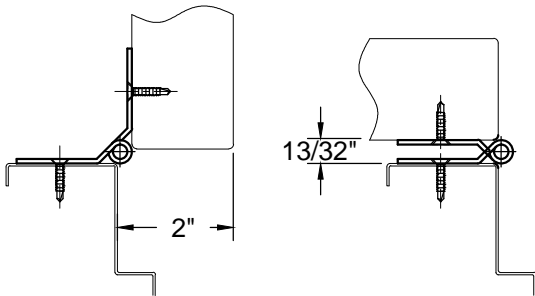


A512 - STAINLESS STEEL HINGE, FULL SURFACE, FLUSH MOUNT

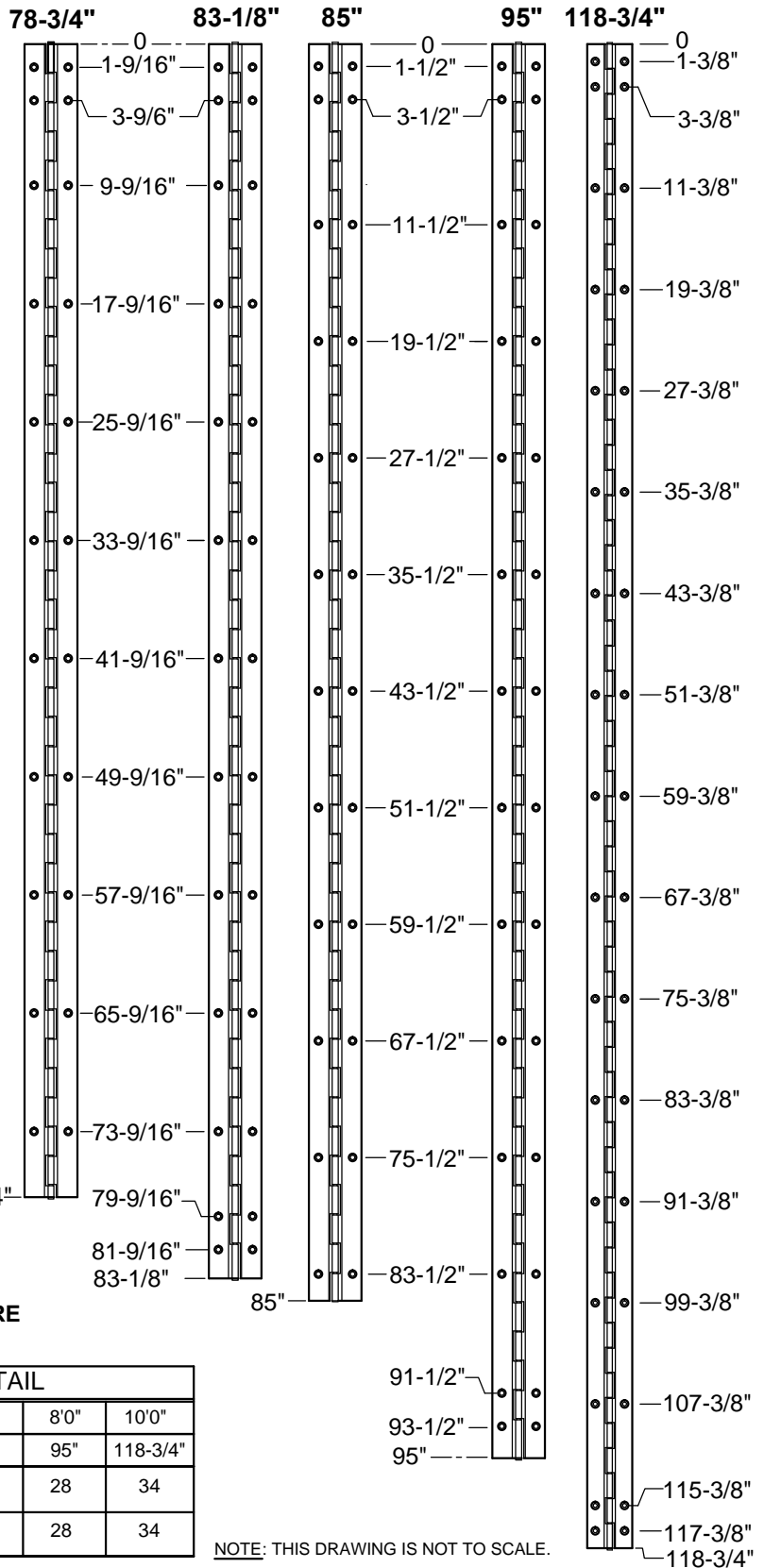


CLOSED POSITION



90° OPEN POSITION

180° OPEN POSITION



NOTE: HINGES CUT TO CUSTOM LENGTH ARE CUT FROM THE BOTTOM - A512 DOES NOT REQUIRE HANDING WHEN CUT.

STANDARD HINGE SIZES & SCREW DETAIL					
NOMINAL DOOR HEIGHT	6'8"	7'0"	7'2"	8'0"	10'0"
ACTUAL HINGE HEIGHT	78-3/4"	83-1/8"	85"	95"	118-3/4"
10-24 x 7/8" PHILLIPS FLAT HEAD, UNDERCUT, SELF-DRILLING TEK MACHINE SCREW	22	26	24	28	34
#10 x 1-1/4" PHILLIPS FLAT HEAD, UNDERCUT, SHEET METAL SCREW	22	26	24	28	34

NOTE: THIS DRAWING IS NOT TO SCALE.



www.abhmf.com
 E-mail: abhinfo@abhmf.com
 Architectural Builders Hardware Mfg., Inc.
 1222 Ardmore Ave., Itasca, IL 60143
 630.875.9900; FAX 800.9FAXABH (932.9224)

A512-STAINLESS STEEL HINGE-01.DWG

A512
STAINLESS STEEL HINGE

©2017 ABH Mfg., Inc.
 printed in USA

PAGE 1 OF 1
 REVISED 04-26-17