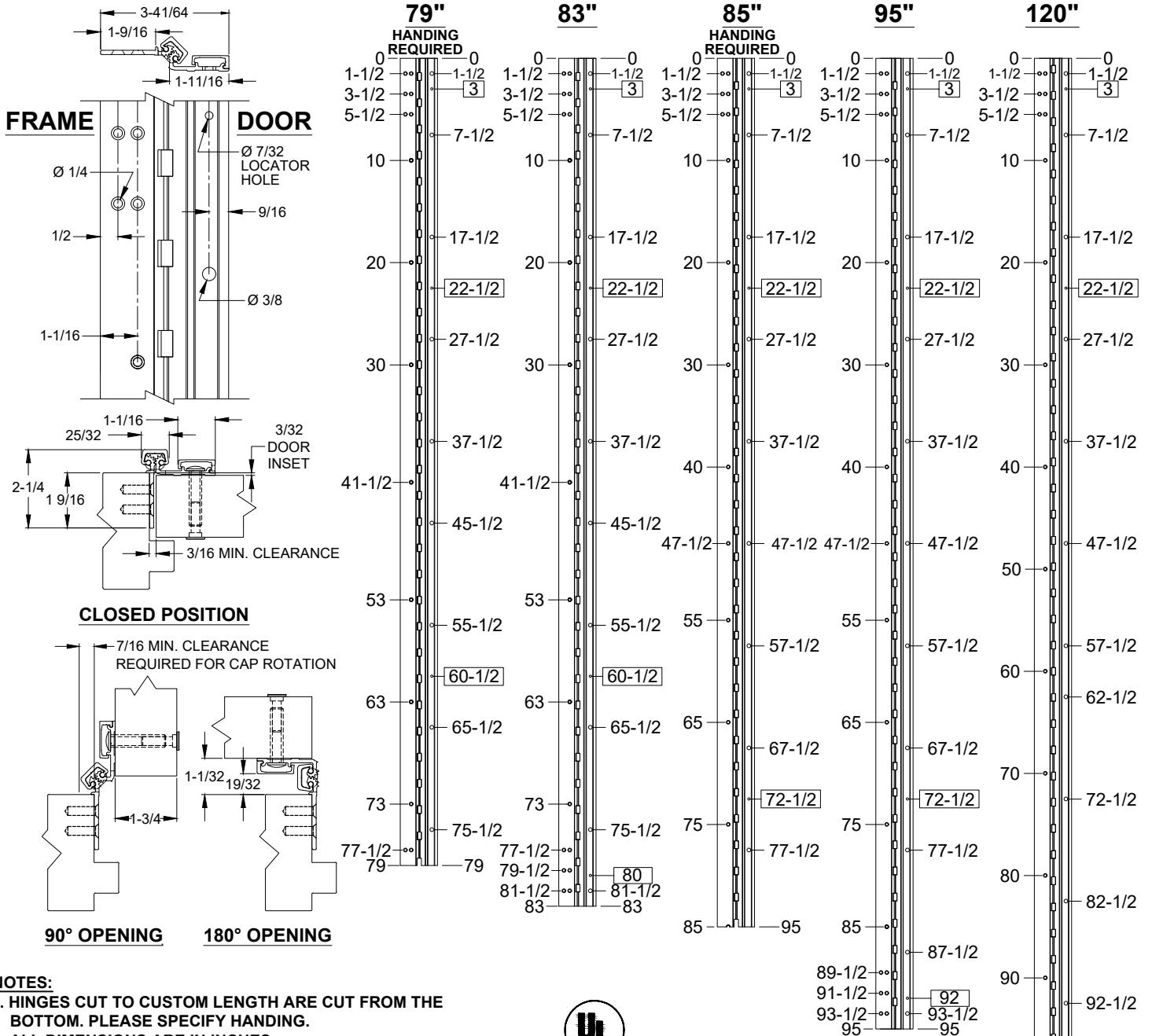


A530 - ALUMINUM GEARED HINGE, 3/32" INSET, HALF SURFACE



- NOTES:**
- HINGES CUT TO CUSTOM LENGTH ARE CUT FROM THE BOTTOM. PLEASE SPECIFY HANDING.
 - ALL DIMENSIONS ARE IN INCHES.
 - ALL DIMENSIONS ARE TO CENTERLINE OF HOLES.
 - XX" DENOTES LOCATOR HOLE.



STANDARD HINGE SIZES & SCREW DETAIL

| NOMINAL DOOR HEIGHT | | 6'8" | 7'0" | 7'2" | 8'0" | 10'0" |
|---------------------|--|------|------|------|------|-------|
| ACTUAL HINGE LENGTH | | 79" | 83" | 85" | 95" | 120" |
| FRAME | 12-24 x 3/4" PHILLIPS FLAT HEAD, UNDERCUT, SELF DRILLING, THREAD FORMING TEK MACHINE SCREW | 15 | 19 | 14 | 21 | 23 |
| DOOR | 1/4-20 x 1-1/4" x 3/8 DIA. SEX BOLT & 1/4-20 x 1-1/4" PH. HEAD SHOULDER SCREW | 9 | 10 | 9 | 11 | 14 |
| | 12-24 x 1" PH. PN. HD. SELF DRILLING TEK SCREW (LOCATOR HOLE) | 3 | 4 | 3 | 4 | 4 |

A530-ALUMINUM GEARED HINGE-03.DWG



www.abhmfg.com
 E-mail: abhinfo@abhmfg.com
 Architectural Builders Hardware Mfg., Inc.
 1222 Ardmore Ave., Itasca, IL 60143
 630.875.9900; FAX 800.9FAXABH (932.9224)

© 2019 ABH Mfg., Inc.
 printed in USA

A530
ALUMINUM GEARED HINGE

PAGE 1 OF 1
 REVISED 9-10-20