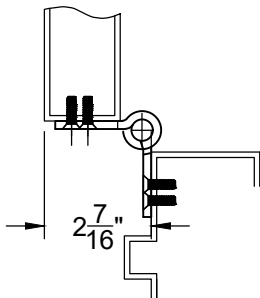
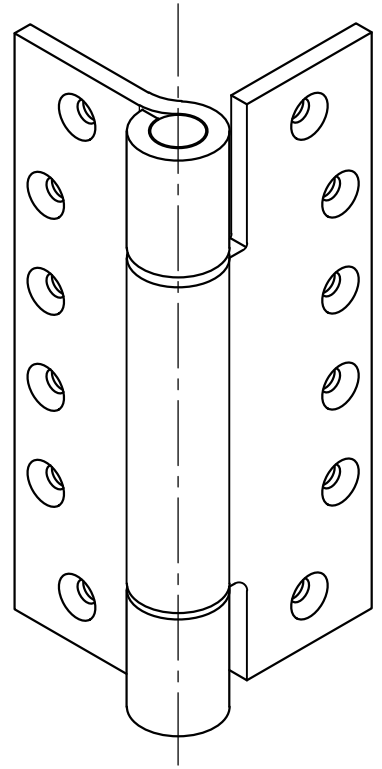
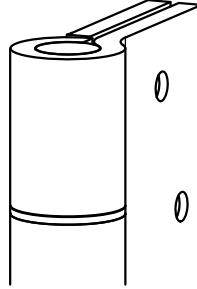
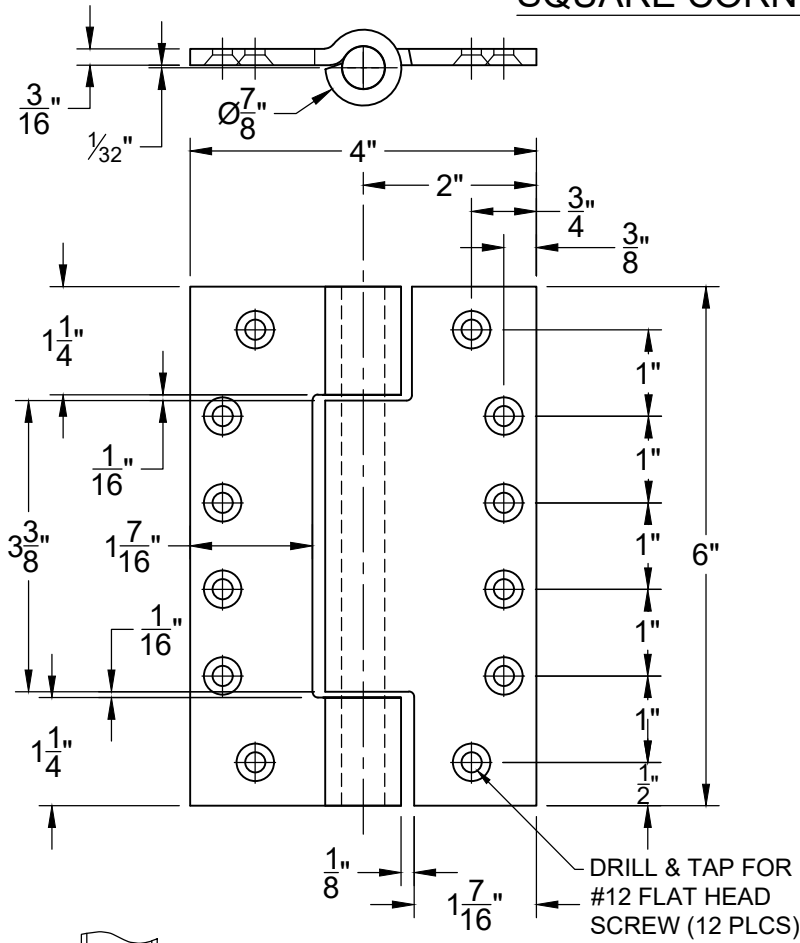
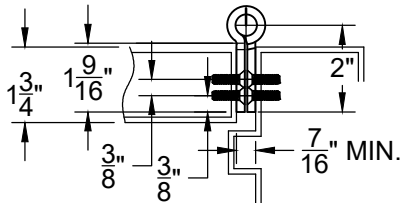


A561 LS (LESS SPRING) HINGE - SURFACE MOUNTED- NON HANDED

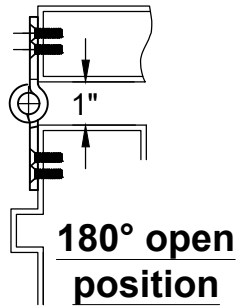
SQUARE CORNER



90° open position



close position



180° open position

NOTES:

- 1. CAN BE USED ON HOLLOW METAL OR WOOD FRAMES AND DOORS.
- 2. HINGES ARE NON-HANDED.
- 3. 1/32" TOLERANCE ON ALL PARTS
- 4. DO NOT SCALE DRAWING

SCREW DETAIL	
QTY.	DESCRIPTION
12	12-24x3/4" PHILLIPS FLAT HEAD MACHINE SCREW
12	#12x1-1/2" PHILLIPS FLAT HEAD SHEET METAL SCREW