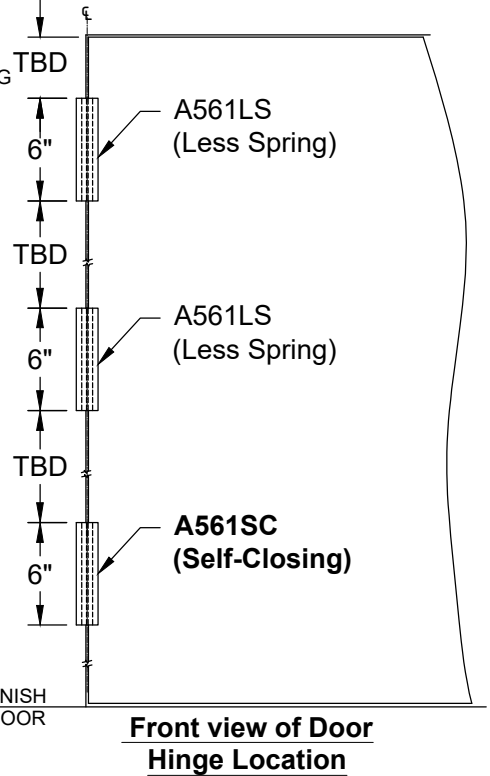
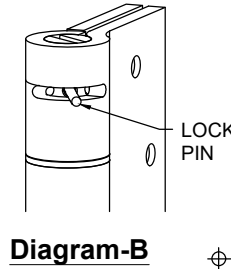
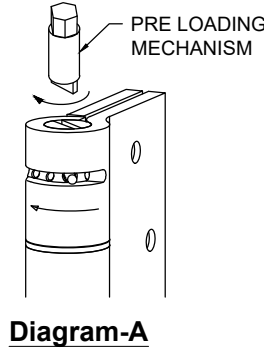
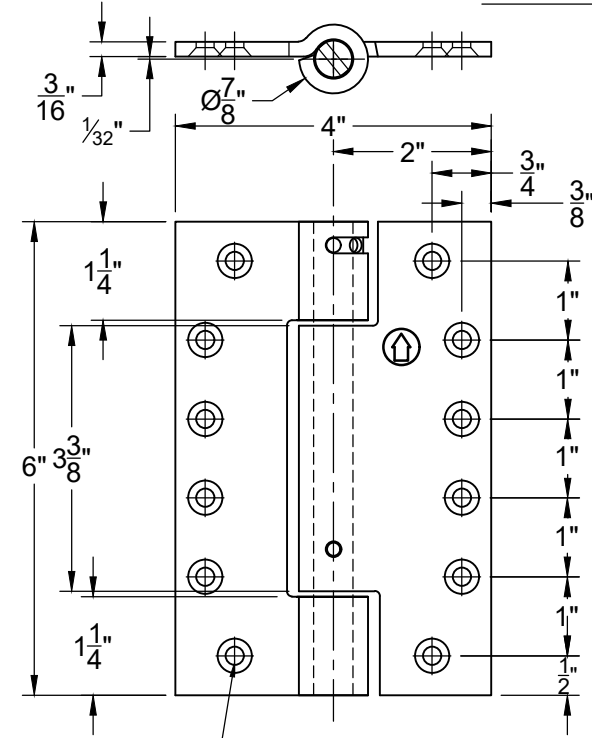
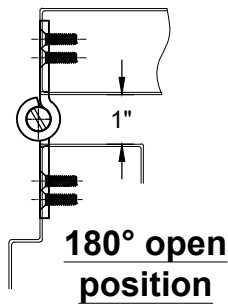


A561 SELF-CLOSING HINGE - FULL MORTISE- NON HANDED

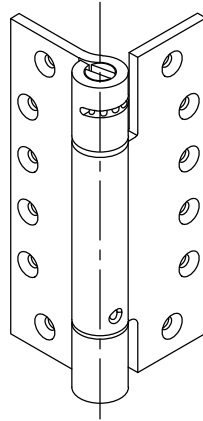
SQUARE CORNER



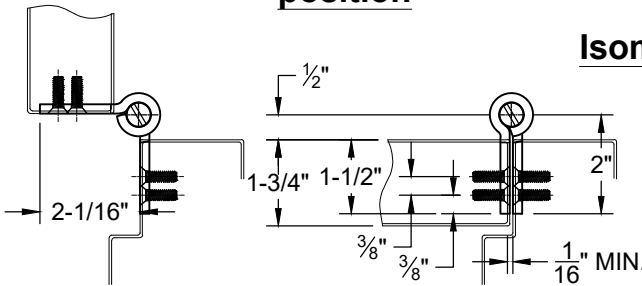
DRILL & TAP FOR #12 FLAT HEAD SCREW (12 PLCS)



180° open position



Isometric View



90° open position

close position

NOTES:

1. SELF-CLOSING SPRING HINGES ARE DESIGNED TO BE INSTALLED "FULL MORTISE".
2. CAN BE USED ON HOLLOW METAL OR WOOD FRAMES AND DOORS. (DOOR UP TO 3'x7'x1-3/4")
3. CLOSING POWER IS ADJUSTABLE UP OR DOWN.
4. HINGES ARE NON-HANDED.
5. 1/32" TOLERANCE ON ALL PARTS
6. DO NOT SCALE DRAWING

INSTALLATION:

1. INSTALL THE HINGE IN DOOR & FRAME. TENSION ADJUSTER MUST BE INSTALLED IN THE UP POSITION.
2. TO SET SPRING TENSION, INSERT PRE-LOADING MECHANISM TO TOP OF HINGE & ROTATE CLOCK WISE. (Diagram-A)
3. INSERT LOCKING PIN ONCE DESIRED TENSION ACHIEVED. (Diagram-B)
4. MORE THAN THREE HOLES TURN ARE NOT RECOMMENDED TO AVOID DAMAGE THE SPRING.

SCREW DETAIL	
QTY.	DESCRIPTION
12	12-24x3/4" PHILLIPS FLAT HEAD MACHINE SCREW
12	#12x1-1/2" PHILLIPS FLAT HEAD SHEET METAL SCREW

Disclaimer: This template is to be used for installation, as shown, of said product and is not suitable for every application method. Custom applications, where door sizes, weights and conflicting hardware are a factor, need to be addressed with ABH and proper instructions provided. ABH is not liable for failure or performance of the product due to improper installation methods and/or use. Improper use and/or installation of this product will void the standard warranty.

A561 SELF-CLOSING HINGE FULL MORTISE-03.DWG