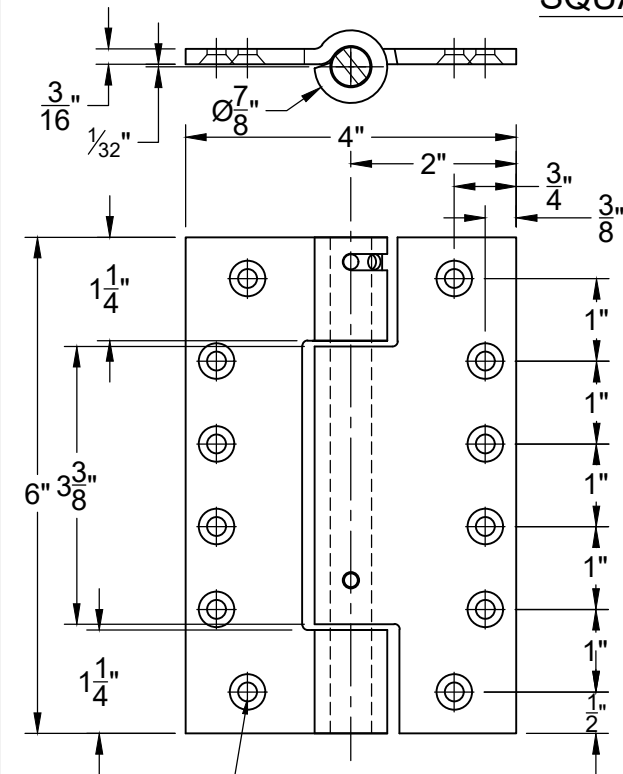
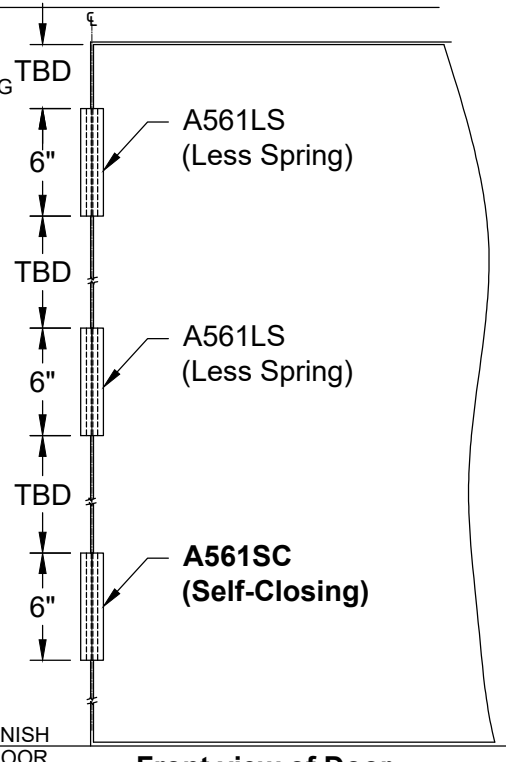
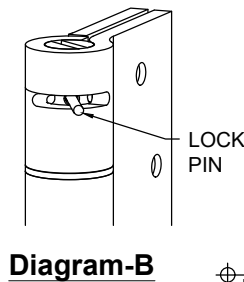
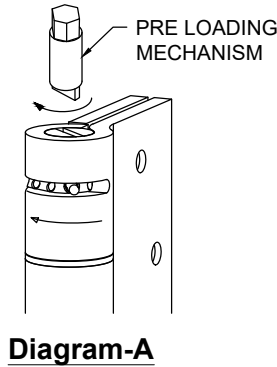


A561 SELF CLOSING HINGE - SURFACE MOUNTED- NON HANDED

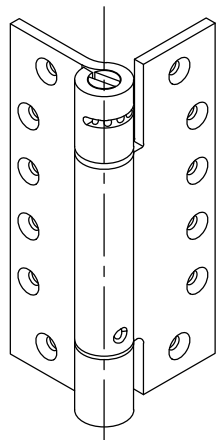
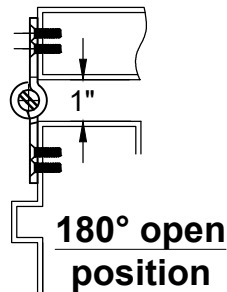
SQUARE CORNER



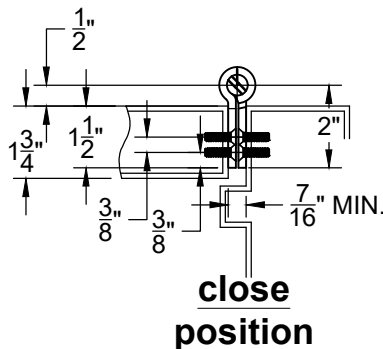
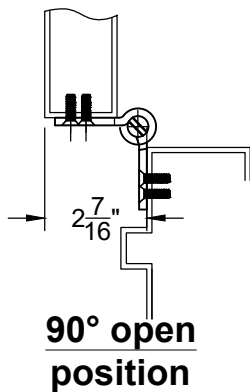
DRILL & TAP FOR #12 FLAT HEAD SCREW (12 PLCS)



Front view of Door Hinge Location



Isometric View



NOTES:

1. CAN BE USED ON HOLLOW METAL OR WOOD FRAMES AND DOORS. (DOOR UP TO 3'x7'x1-3/4")
2. CLOSING POWER IS ADJUSTABLE UP OR DOWN.
3. HINGES ARE NON-HANDED.
4. 1/32" TOLERANCE ON ALL PARTS
5. DO NOT SCALE DRAWING

INSTALLATION:

1. INSTALL THE HINGE IN DOOR & FRAME
2. TO SET SPRING TENSION, INSERT PRE-LOADING MECHANISM TO TOP OF HINGE & ROTATE CLOCK WISE.(Diagram-A)
3. INSERT LOCKING PIN ONCE DESIRED TENSION ACHIEVED.(Diagram-B)
4. MORE THAN THREE HOLES TURN ARE NOT RECOMMENDED TO AVOID DAMAGE THE SPRING.

SCREW DETAIL	
QTY.	DESCRIPTION
12	12-24x3/4" PHILLIPS FLAT HEAD MACHINE SCREW
12	#12x1-1/2" PHILLIPS FLAT HEAD SHEET METAL SCREW



www.abhmfg.com
E-mail: abhinfo@abhmfg.com
Architectural Builders Hardware Mfg., Inc.
1222 Ardmore Ave., Itasca, IL 60143
630.875.9900; FAX 800.9FAXABH (932.9224)

A561 SELF-CLOSING HINGE FULL MORTISE-02.DWG
**A561 SELF-CLOSING HINGE
SURFACE MOUNTED**

© 2020 ABH Mfg., Inc.
printed in USA

PAGE 1 OF 1
REVISED 06-09-20