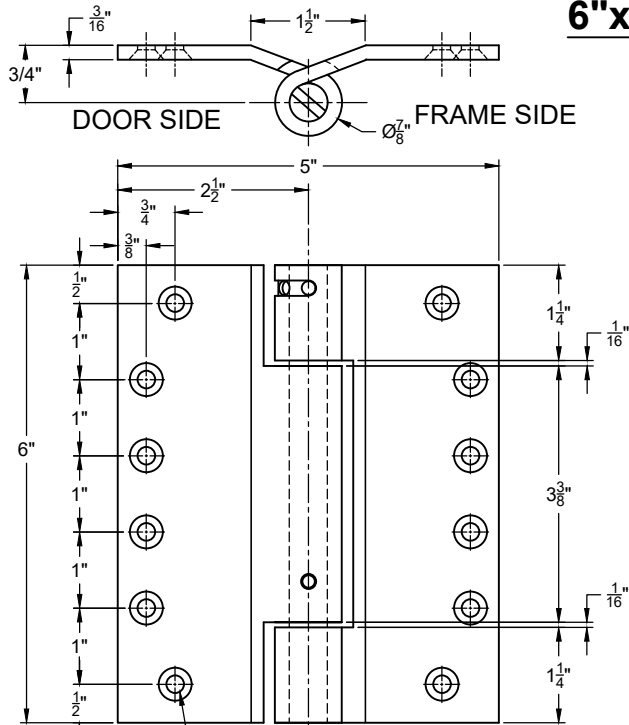
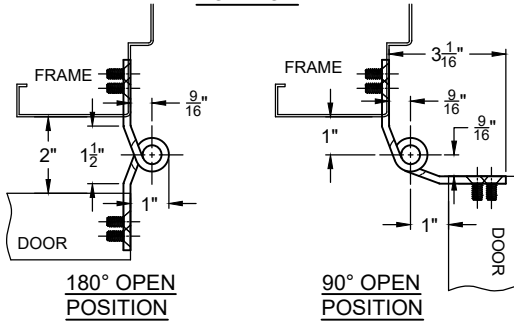
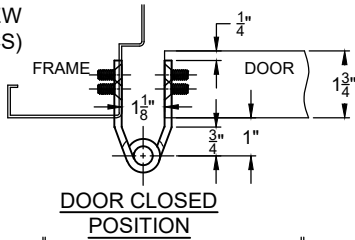


A563 FULL MORTISE SELF-CLOSING HINGE

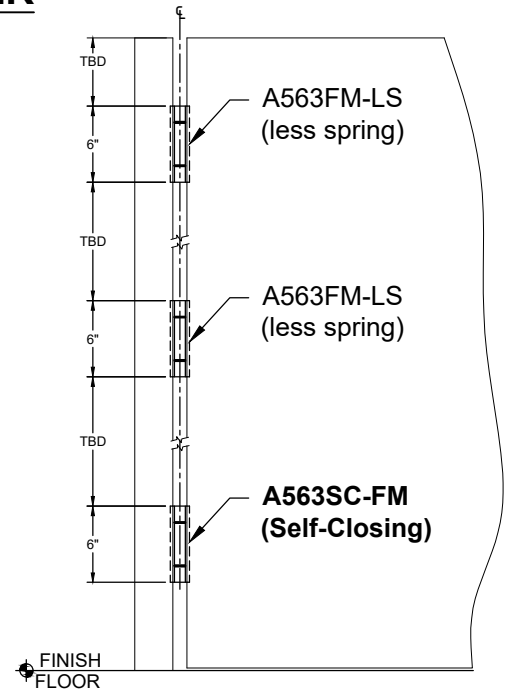
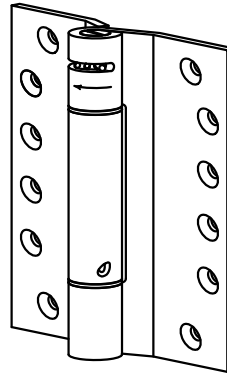
6"x5" SQ. CORNER



DRILL & TAP FOR #12 FLAT HEAD SCREW (12 PLCS)



SCREW DETAIL	
QTY.	DESCRIPTION
12	12-24 x 3/4" PHILLIPS FLAT HEAD MACHINE SCREW, S.S.
12	#12 x 1-1/2" PHILLIPS FLAT HEAD SHEET METAL SCREW



Front view of Door Hinge Location for example

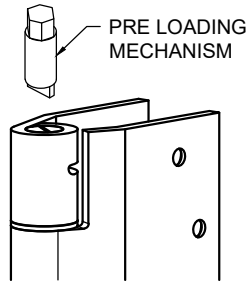


Diagram-A

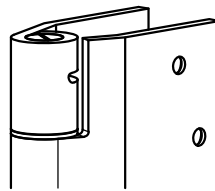


Diagram-B

NOTES:

1. SELF-CLOSING SPRING HINGES ARE DESIGNED TO BE INSTALLED "FULL MORTISE".
2. CLOSING POWER IS ADJUSTABLE UP OR DOWN.
4. HINGES ARE NON-HANDED.
5. 1/32" TOLERANCE ON ALL PARTS
6. DO NOT SCALE DRAWING

INSTALLATION:

1. INSTALL THE HINGE IN DOOR & FRAME.
2. TO SET SPRING TENSION, INSERT PRE-LOADING MECHANISM TO TOP OF HINGE & ROTATE CLOCK WISE. (Diagram-A)
3. INSERT LOCKING PIN ONCE DESIRED TENSION ACHIEVED. (Diagram-B)
4. MORE THAN THREE HOLES TURN ARE NOT RECOMMENDED TO AVOID DAMAGE THE SPRING.

A563 FULL MORTISE SELF CLOSING HINGE.DWG

ABH
MANUFACTURING INC.

www.abhmfg.com
E-mail: abhinfo@abhmfg.com
Architectural Builders Hardware Mfg., Inc.
1222 Ardmore Ave., Itasca, IL 60143
630.875.9900; FAX 800.9FAXABH (932.9224)

© 2020 ABH Mfg., Inc.
printed in USA

**A563 FULL MORTISE
SELF-CLOSING HINGE**

ISSUED 04-29-20