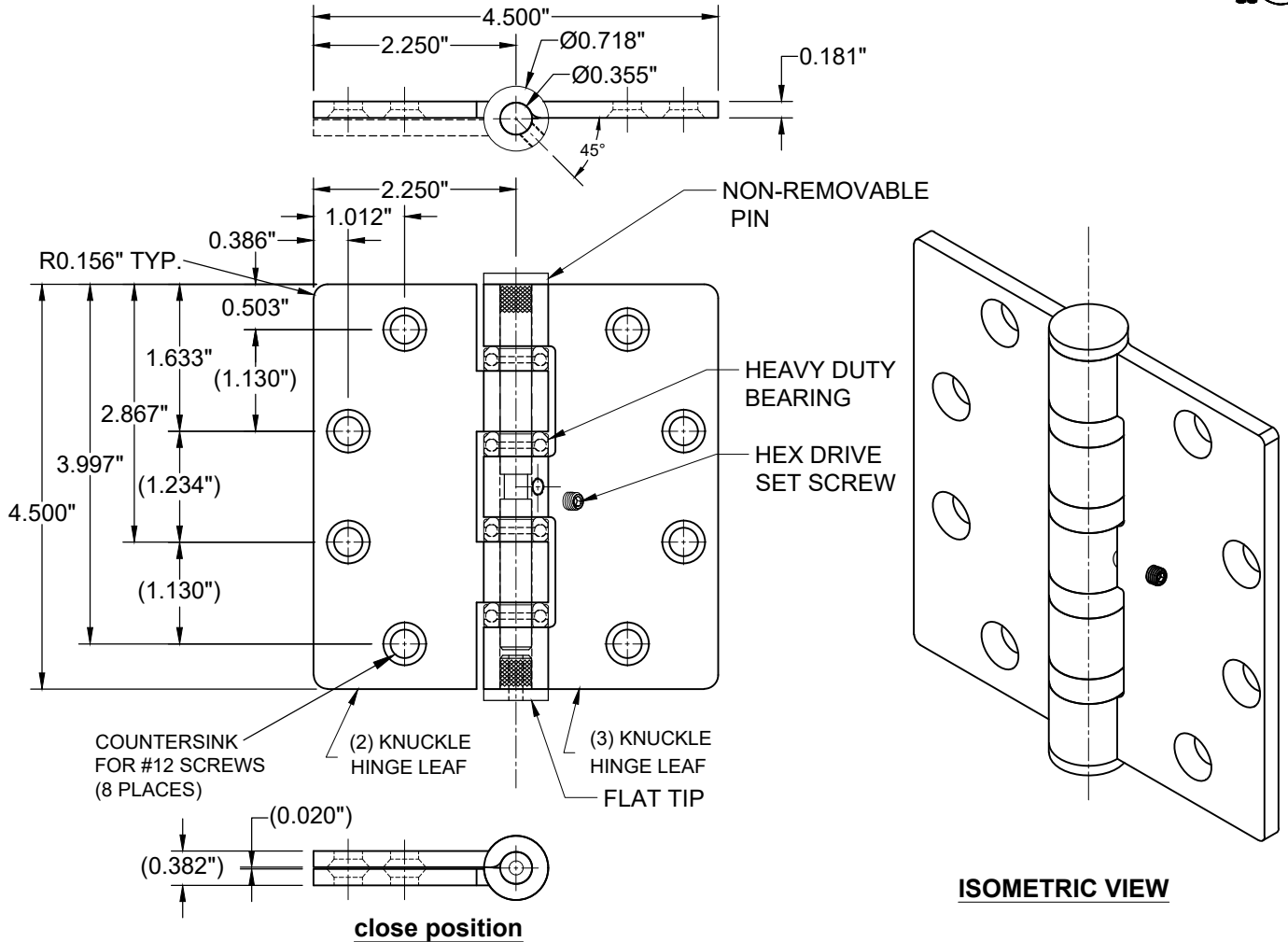


A661 - 4.5"x4.5"- 5 KNUCKLE HEAVY DUTY BUTT HINGE



NOTES:

1. FIVE KNUCKLE HINGES ARE DESIGNED TO BE INSTALLED "FULL MORTISE".
2. FOUR BEARING HINGE CAN BE USED ON HOLLOW METAL OR WOOD FRAMES & DOORS.
3. SCREW DETAILS ARE GIVEN BELOW. SCREWS MUST BE ENGAGED MINIMUM .345" IN STEEL REINFORCEMENT PER ASTM A-36.
4. 1/32" TOLERANCE ON ALL PARTS
5. MATERIAL : STAINLESS STEEL
6. DO NOT SCALE DRAWING, ISOMETRIC VIEW IS FOR VISUAL REPRESENTATION.
7. ALL DIMENSIONS ARE IN INCHES, UNLESS NOTED OTHERWISE.

SCREW DETAIL	
QTY.	DESCRIPTION
8	12-24x3/4" PHILLIPS FLAT HEAD MACHINE SCREW, S.S.
8	#12x1-1/2" PHILLIPS FLAT HEAD SHEET METAL SCREW, S.S.



www.abhmfg.com
 E-mail: abhinfo@abhmfg.com
 Architectural Builders Hardware Mfg., Inc.
 1222 Ardmore Ave., Itasca, IL 60143
 630.875.9900; FAX 800.9FAXABH (932.9224)

© 2021 ABH Mfg., Inc.
 printed in USA

A661
 4.5"x4.5"- 5 KNUCKLE HINGE

PAGE 1 OF 1
 ISSUED 06-04-21

A661-4.5"x4.5"-5 KNUCKLE HINGE-00.DWG