

1842

Ligature Resistant Heavy Duty Wall Stop

Heavy Duty Ligature Resistant wall stop, to be used in behavioral health areas and facilities, designed to protect walls from excessive force and prevent patients from causing self harm.

Features & Specifications

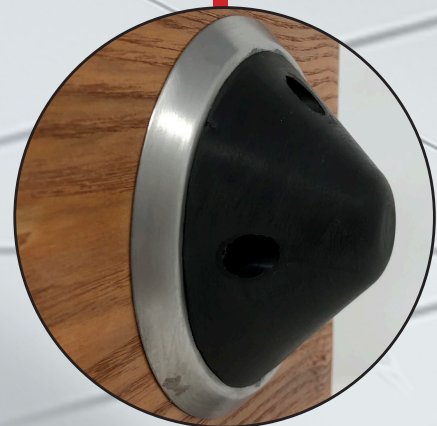
- Projection - 1 $\frac{3}{4}$ " projection from face of wall
- 3- $\frac{5}{8}$ " Diameter Plate
- Wall Plate supplied with chamfered edges to prevent ligature attachment
- Material - High Density Rubber Stop; 304 Stainless Steel Plate
- "SEC" Security fasteners provided standard

Available Finishes

- US3 - Bright Brass
- US4 - Satin Brass
- US10 - Satin Bronze
- US10B - Satin Dark Bronze
- US32 - Bright Stainless
- US32D - Satin Stainless Steel



Front View



Side View

https://omh.ny.gov/omhweb/patient_safety_standards/guide.pdf