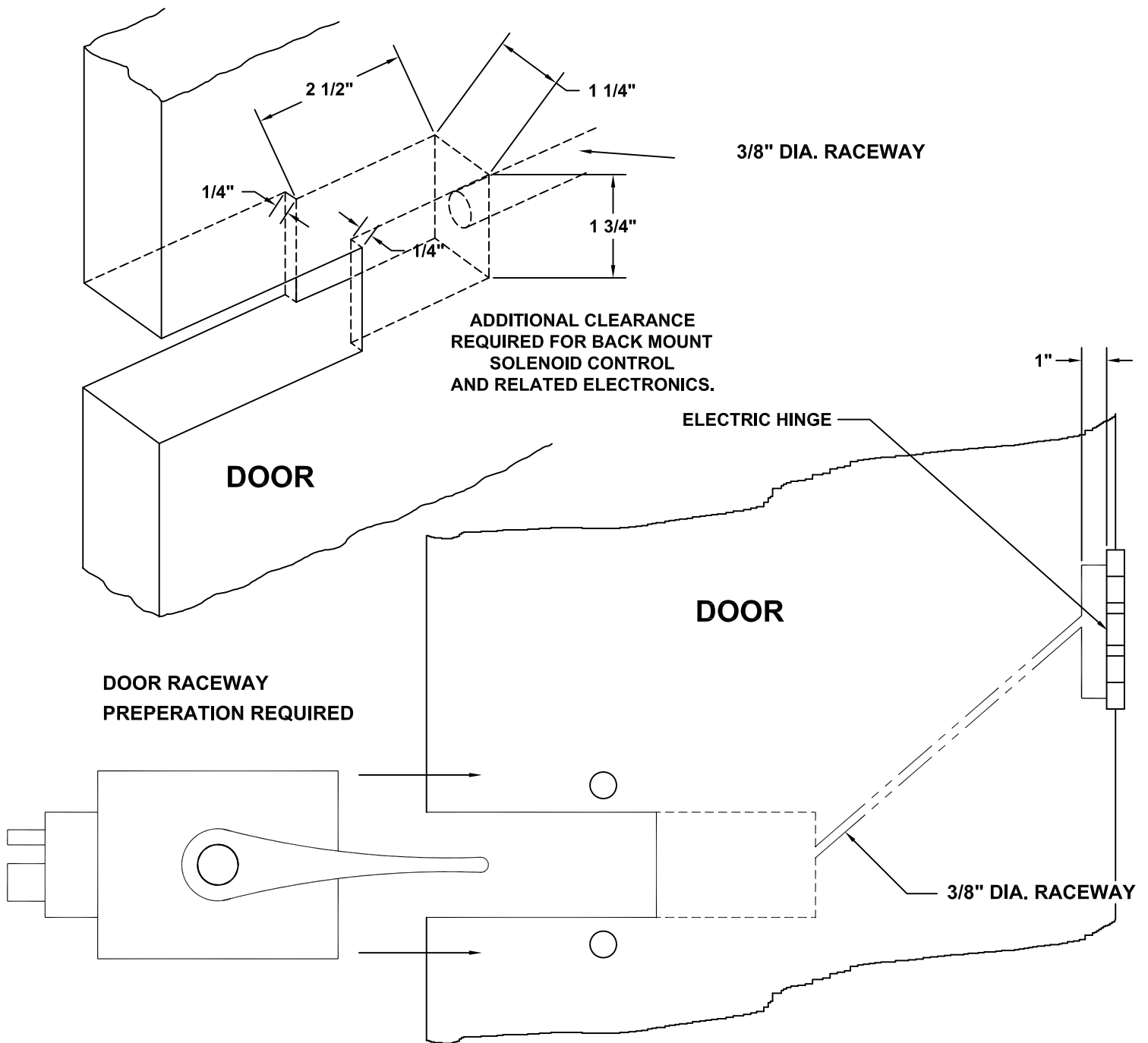


ELECTRIC UNIT LOCK TEMPLATE

"A" CONFIGURATION DOOR PREPARATION 1510/1520 ELECTRIC LOCKING/UNLOCKING



DOOR FABRICATOR TO PROVIDE A 3/8" DIAMETER (MINIMUM) RACEWAY THROUGH DOOR TO ALLOW THE INSERTION OF ELECTRICAL WIRES RUNNING BETWEEN THE LOCK MORTISE AND THE ELECTRIC HINGE.

