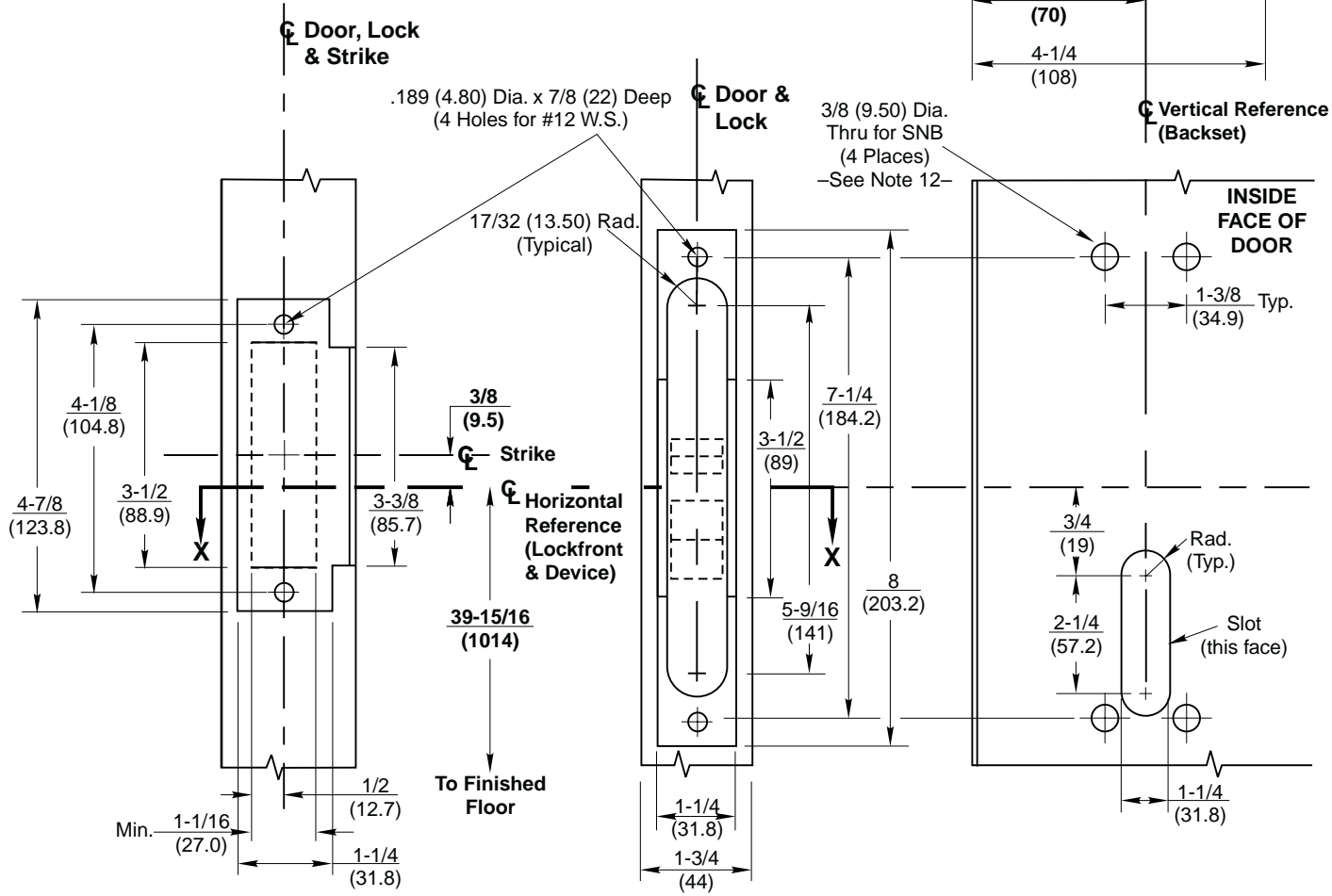
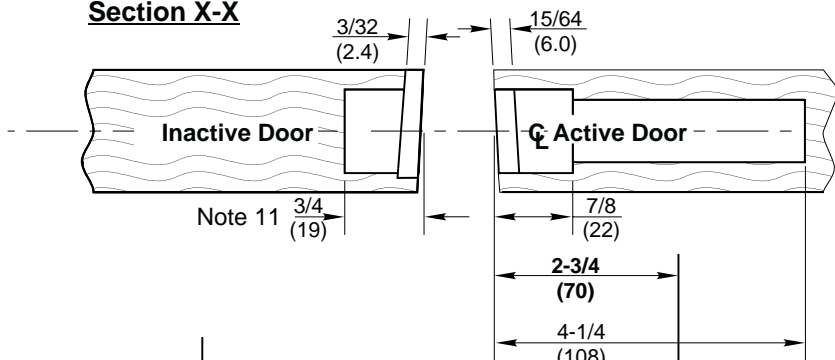


Section X-X



Strike Preparation

Device Preparation

Notes:

1. Do not scale drawing.
2. Dimensions are in inches (mm).
3. LHR active pair shown. Preparation is typical for both hands.
4. Minimum door stile width 4-1/2(114).
5. Prepare mounting holes when installing device.
6. Provide adequate structural support to maintain door integrity after device installation with power tools, door use, or abuse.
7. Device mount to hinge stile (not shown) requires hole location and preparation during device installation. Door structural requirements to support the device cases are similar for both door stiles.
8. For outside trim preparation see appropriate trim template.
9. Unless otherwise specified, door preparation and dimensional tolerances must conform to ANSI A115.W1.
10. Dimensions given about a centerline are symmetrical.
11. Dimension is 1 (25) if dust box is used.
12. Wood screws (#14x1-1/2" by others) permitted in solid core wood doors if pilot holes are used for installation, when door label allows its use.
13. Latchbolt centerline is 23/32 (18.2) below & Auxbolt centerline is 3/16 (4.8) above the centerline of lockfront.
14. For electrical device suffixes "SAFE" or "SECURE", also see template 7477-0001.

**1530 and 1530F Mortise Exit Devices
with ANSI A115.1 Strike & Optional SNB**
Application to Pair of Wood or Composite Doors
without Mullion

Yale
Yale Commercial Locks and Hardware

www.yalecommercial.com

TEMPLATE NUMBER

7415-1031

DATE

8-99