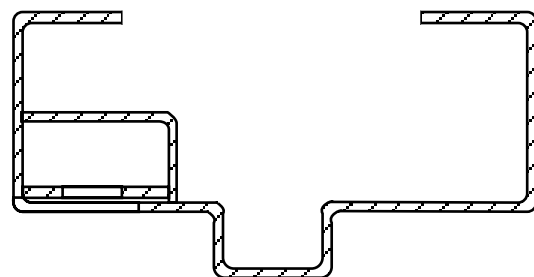
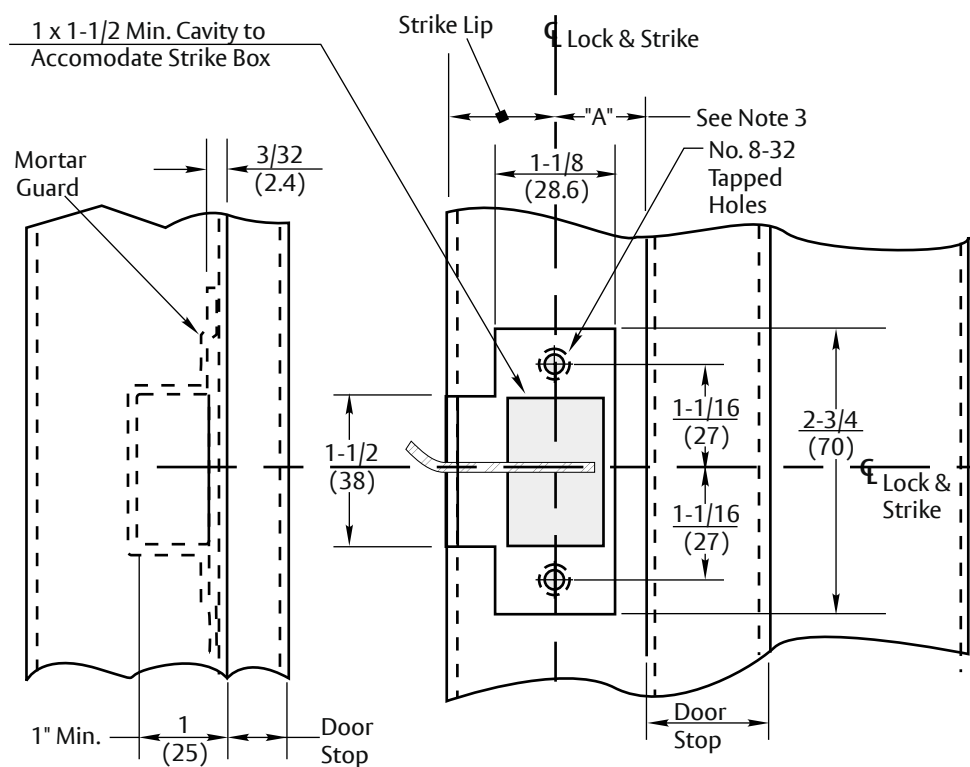


Strike No.	Used With	Std. Lip Length
271	4300 / 4300LN	1-1/8 (28.6)
371	5300 / 5300LN	1-1/4 (31.8)
495	5400 5400LN 5500	1-1/4 (31.8)

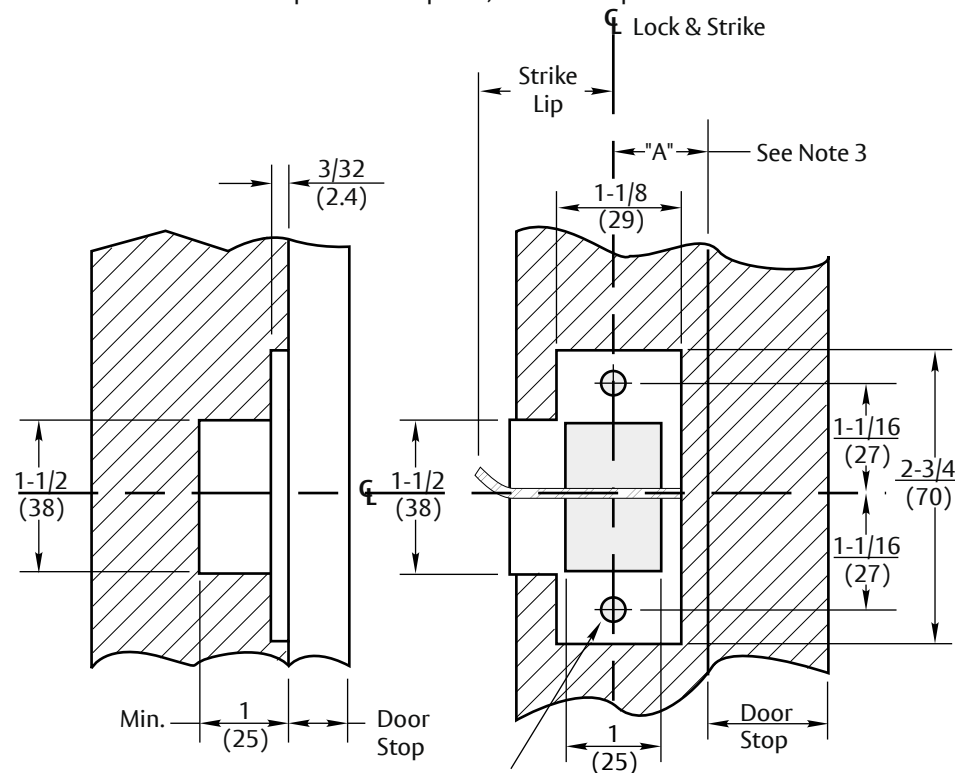


Notes:

1. Do not scale drawing.
2. Optional Strike Lip lengths: (371 & 495 only)
1" (25mm), 1-1/2" (38mm), 1-3/4" (44mm), and 2" (51mm)
3. Dimensions "A" = 1/2 door thickness plus clearance for silencers or gasketing when used. (Failure to provide clearance will cause misalignment of lock and strike, requiring strike modification.)
4. When ANSI A115.2 (Fig. 1) Strike is specified, refer to No. 497 Strike, Template No. 7102-0003.
5. When Full Lip Strike is required, refer to Template No. 7102-0006.



Hollow Metal Frame



Wood Frame

Pilot Hole for No. 8 W.S. (2 Req'd)

Experience a safer and more open world

Copyright © 1999, 2023, ASSA ABLOY Access and Egress Hardware Group, Inc. All rights reserved. Reproduction in whole or in part without the express written permission of ASSA ABLOY Access and Egress Hardware Group, Inc. is prohibited.

271, 371 & 495 Strikes
H.M. & Wood Frame Preparation (ANSI A115.2 FIG. 2 Strike)
(Used for 4300, 5300, 5400, & 5500 Series Knob Locks & 4300LN, 5300LN & 5400LN Series Lever Locks)

Template Number: 7102-0005
Sheet: 1 of 1
Date: 12/23

ASSA ABLOY

1-855-557-5078
www.assaabloy.com