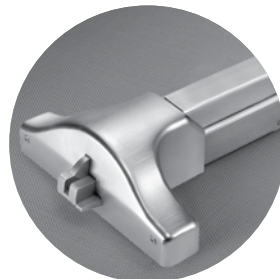




Shipping At the Speed You Need

5-Day Shipping Program



An ASSA ABLOY Group brand

ACCENTRA
ASSA ABLOY

ASSA ABLOY is transitioning the Yale Commercial brand to ACCENTRA. This affects only the brand name; the products and product numbers will remain unchanged. Prior to May 20, 2024, products may be shipped either as Yale Commercial brand or ACCENTRA brand. Products shipping after May 20, 2024, will be branded ACCENTRA.

Order Form

Please use the form on pages 82-83 when placing orders for Yale® products. Copies of this form can also be printed from our website (www.yalelocks.com).

Part Numbers

QuickShip part numbers must be included on the order form. Orders listing model numbers only may be processed as factory orders.

Mixed Orders

QuickShip product orders and factory orders must be submitted on separate order forms. Any order received having both factory and QuickShip products will be processed as a factory order and shipped from the factory at normal lead times.

Quotes

Quote number must be included with the purchase order. Orders without this information will be processed at standard buying programs.

Minimum Order

Minimum invoice is \$250 net product value.

Lead Time

Lead time is 5 delivery days from receipt of order. (Consult the current Yale® Price Book for a complete list of Terms & Conditions regarding delivery.) We reserve the right to limit quantities.

Freight

All orders are shipped FOB factory except as expressly provided below. When delivered to the Transportation Company, the Purchaser assumes the risk of loss or damage in transit. Customer orders with net product value in excess of \$7,000.00 will be shipped prepaid to a single destination point in the United States. Customer orders with net product value less than \$7,000.00 will be shipped prepaid by the Yale carrier of choice, and the shipping charges will be added to Customer's invoice. Yale will choose the carrier and routing. If a Customer requests an alternative carrier, freight charges will be incurred on Customer's invoice. Yale has the right to charge a handling fee to ship orders under \$7,000.00. Yale will apply a handling fee even if a customer provides their UPS account # to ship the order.

Effective August 6, 2012, a flat rate fuel surcharge will apply to shipments of orders that do not meet the minimum prepaid freight threshold. The surcharge rate will be adjusted quarterly on the first day of the quarter, based on the On-Highway Diesel Fuel Price Index as published on the US Department of Energy website (www.eia.gov/petroleum/gasdiesel). The new rate will be effective on the 2nd Monday of each quarter as posted on the Door Security Solutions extranet.

Changes/Cancellations

Due to the promptness of delivery, no changes or cancellations can be accepted. The only exception is when we are out of stock.

Prices

All shipments will be made at prices prevailing at time of shipment.

Terms

Invoices dated the 1st through the 15th will be due for 2% discount on the 10th of the following month. Invoices dated the 16th through the 31st will be due for 2% discount on the 25th of the following month. Net immediately thereafter.

Consult the current Yale Price Book for pricing information, a complete list of Terms & Conditions and Warranty Information.

For Customer Service Contact:

**ASSA ABLOY Door Security Solutions
Customer Service - Monroe**

1902 Airport Road
Monroe, NC 28110
Phone: 800-438-1951

Hours of Operation

8:00 am - 4:30pm EST

ALL QUICKSHIP ORDERS MUST BE FAXED TO 800-338-0965. ORDERS CAN ALSO BE SENT BY E-MAIL TO ORDERS@ASSAABLOYDSS-CS.COM.

FINISH CHART

Finishes for Yale products are ordered using the ANSI/BHMA finish code.

SPRAYED FINISHES	
FINISH DESCRIPTION	ANSI/BHMA CODE
Aluminum Painted	689
Dark Bronze Painted	690
Light Bronze Painted	691
Dark Bronze Painted	695
Satin Brass Painted	696

PLATED FINISHES	
FINISH DESCRIPTION	ANSI/BHMA CODE
Bright Brass, Clear Coated	605
Dark Oxidized Satin Bronze, Oil Rubbed	613
Satin Chrome Plated	626
Satin Stainless Steel	630

authorized channel partner (ACP) program

The Authorized Channel Partner (ACP) program is open to wholesale and contract hardware distributors, who sell ASSA ABLOY's technology products to security systems integrators and locksmiths, and help with product selection based on the application. The ACP is for resellers that do not install and service products.

The Certified Integrator (CI) program provides hands-on training for security systems integrators and network administrators. Not only does this training familiarize certified integrator candidates on product features and applications, it also gives them valuable experience installing, commissioning, and troubleshooting the products in a real-world environment. This category extends to End Users that install and manage their own systems and third party lock installers as well.

For more information on the qualifications for becoming an ACP or CI, contact your local ASSA ABLOY Door Security Solutions sales consultant for details.

Products on pages 77-79 are part of the authorized channel partner program.

Hardwiring Made Easy®



ElectroLynx®

As part of our promise to provide innovative, fast and effective, and higher security solutions to our customers, Yale offers ElectroLynx, a universal quick-connect system that simplifies the electrification of the door opening. ElectroLynx® is a registered trademark of ASSA ABLOY, Inc.

symphony® series: mortise



Sold through
**ASSA ABLOY
AUTHORIZED
CHANNEL
PARTNER**



To be Installed by
**ASSA ABLOY
CERTIFIED
INTEGRATOR**



S8800FL X SYM SERIES: COMPLETE LOCKSET WITH LEVER & ROSE TRIM							
DESIGN	MODEL #	FINISH	HAND	READER	CYLINDER	QUICKSHIP #	APPROX. WEIGHT (LBS. EACH)
FAIL SAFE							
AUR	S8890FL x SYM	626	RH	T002	Less Cylinder	022400	7
AUR	S8890FL x SYM	626	RH	T003	Less Cylinder	022416	7
AUR	S8896FL x SYM	626	RH	T002	Less Cylinder	022417	7
AUR	S8896FL x SYM	626	RH	T003	Less Cylinder	022418	7
FAIL SECURE							
AUR	S8891FL x SYM	626	RH	T002	Less Cylinder	022401	7
AUR	S8891FL x SYM	626	RH	T003	Less Cylinder	022419	7
AUR	S8897FL x SYM	626	RH	T002	Less Cylinder	022420	7
AUR	S8897FL x SYM	626	RH	T003	Less Cylinder	022421	7

Note: Yale reserves the right to limit quantities



symphony® series: cylindrical



S5400LN X SYM SERIES: 2-3/4" BACKSET						
DESIGN	MODEL #	FINISH	READER	CYLINDER	QUICKSHIP #	APPROX. WEIGHT (LBS. EACH)
FAIL SAFE						
AU	S5490LN x SYM	626	T002	1802, 6-Pin, GA Keyed Random	022402	7
AU	S5490LN x SYM	626	T003	1802, 6-Pin, GA Keyed Random	022422	7
AU	S5490LN x SYM	626	T002	1802, 6-Pin, PARA Keyed Random	022403	7
AU	S5490LN x SYM	626	T003	1802, 6-Pin, PARA Keyed Random	022423	7
FAIL SAFE (SMALL FORMAT INTERCHANGEABLE CORE)						
BAU	S5490LN x SYM	626	T002	Less Core	022404	7
BAU	S5490LN x SYM	626	T003	Less Core	022424	7
FAIL SECURE						
AU	S5491LN x SYM	626	T002	1802, 6-Pin, GA Keyed Random	022405	7
AU	S5491LN x SYM	626	T003	1802, 6-Pin, GA Keyed Random	022425	7
AU	S5491LN x SYM	626	T002	1802, 6-Pin, PARA Keyed Random	022406	7
AU	S5491LN x SYM	626	T003	1802, 6-Pin, PARA Keyed Random	022426	7
FAIL SECURE (SMALL FORMAT INTERCHANGEABLE CORE)						
BAU	S5491LN x SYM	626	T002	Less Core	022407	7
BAU	S5491LN x SYM	626	T003	Less Core	022427	7

**Note: Yale reserves the right to limit quantities
See page 80 for cylinder options**

symphony® series: exit devices and trim



7100 X SYM SERIES ARCHITECTURAL						
MODEL #	DESCRIPTION	FINISH	READER	CYLINDER	QUICKSHIP #	APPROX. WEIGHT (LBS. EACH)
DEVICE						
SQUAREBOLT®						
7150-36 X SYM	SquareBolt® Exit Device, 36" for Symphony Trim	630	—	—	022430	17
RIM						
7100-36 X SYM	Rim Exit Device, 36" for Symphony Trim	630	—	—	022433	17
TRIM						
FAIL SAFE						
AU692F x SYM	Symphony Trim	630	T002	Less Cylinder	022408	8
AU692F x SYM	Symphony Trim	630	T003	Less Cylinder	022428	8
FAIL SECURE						
AU693F x SYM	Symphony Trim	630	T002	Less Cylinder	022409	8
AU693F x SYM	Symphony Trim	630	T003	Less Cylinder	022429	8

Note: Yale reserves the right to limit quantities
See page 80 for cylinder options



symphony®: cylinders

MODEL #	DESCRIPTION	KEY SECTION	FINISH	COLLAR SIZE INCLUDED	QUICKSHIP #	APPROX. WEIGHT (LBS. EACH)
MORTISE CYLINDERS						
2153 x 1-3/8"	6-Pin, Keyed Random	GA	626	—	022412	0.4
2153 x 1-3/8"	6-Pin, 0-Bitted	GA	626	—	022413	0.4
2153 x 1-3/8"	6-Pin, Keyed Random	PARA	626	—	022414	0.4
2153 x 1-3/8"	6-Pin, 0-Bitted	PARA	626	—	022415	0.4
MORTISE CYLINDERS (LARGE FORMAT INTERCHANGEABLE CORE)						
2196 x 1-1/2"	LFIC, 6-Pin, 0-Bitted	GA	626	1765.656	022002	1
2196 x 1-1/2"	LFIC, 6-Pin, 0-Bitted	PARA	626	1765.656	022003	1
MORTISE HOUSINGS						
2221 x 1-1/2"	LFIC Housing Only, Less Core		626	1765.656	022004	0.4
K660 x 1-3/8"	SFIC Housing Only, Less Core		626	1765.563	022005	0.4
COMPONENT CYLINDERS						
1802	6-Pin, Keyed Random	GA	626	—	002786	0.2
1802	6-Pin, 0-Bitted	GA	626	—	002782	0.2
1802	6-Pin, Keyed Random	PARA	626	—	002785	0.2
1802	6-Pin, 0-Bitted	PARA	626	—	002798	0.2
2802	6-Pin, Schlage® Keyed Random	C	626	—	001899	0.2
2802	6-Pin, Schlage® 0-Bitted	C	626	—	001897	0.2
RIM CYLINDERS						
1109	6-Pin, Keyed Random	GA	626	1765.250	002779	0.4
1109	6-Pin, 0-Bitted	GA	626	1765.250	002729	0.4
1109	6-Pin, Keyed Random	PARA	626	1765.250	002778	0.4
1109	6-Pin, 0-Bitted	PARA	626	1765.250	022036	0.4
2109	6-Pin, Schlage® Keyed Random	C	626	1765.250	022039	0.4
2109	6-Pin, Schlage® 0-Bitted	C	626	1765.250	022040	0.4
RIM CYLINDERS (INTERCHANGEABLE CORE)						
1193 x 1-7/16"	LFIC, 6-Pin, 0-Bitted	GA	626	1765.250	022043	1
1193 x 1-7/16"	LFIC, 6-Pin, 0-Bitted	PARA	626	1765.250	022044	1
RIM HOUSINGS						
1212 x 1-7/16"	LFIC Housing Only, Less Core	—	626	1765.250	022053	0.5
K680 x 1-3/8"	SFIC Housing Only, Less Core	—	626	1765.187	022058	0.5
INTERCHANGEABLE CORES (LARGE FORMAT)						
1210	Core Only, 6-Pin, 0-Bitted	GA	626	—	001783	0.3
1210	Core Only, 6-Pin, 0-Bitted	PARA	626	—	001791	0.3

Note: Yale reserves the right to limit quantities

symphony®: accessories

MODEL #	DESCRIPTION	QUICKSHIP #	APPROX. WEIGHT (LBS. EACH)
WT1	Wiegand Test Unit	022300	1
SWG1	Exterior gasket between reader and escutcheon - all series	022301	.02
SWG2	Interior gasket between escutcheon and door surface - cylindrical	022302	.02
SWG3	Exterior gasket between escutcheon and door surface - cylindrical and exit	022303	.02
SWG4	Interior gasket between reader escutcheon and door surface - exit	022304	.02
SWG5	Interior gasket between secure side escutcheon and door surface - mortise	022305	.02
SWG6	Exterior gasket between reader escutcheon and door surface - mortise	022306	.02
BPS-24-1	Power supply 1 amp @ 24VDC output	003450	9
BPS-24-2	Power supply 2 amp @ 24VDC output	003451	15
BPS-24-4	Power supply 4 amp @ 24VDC output	003452	22

Note: Yale reserves the right to limit quantities

fax to: 800-338-0965 or e-mail to: orders@assaabloydss-cs.com attention: customer service

Account # _____ **P.O. #** _____ **P.O. Date** _____ **Buying Program** **Quote Number (or fax copy of quote submitted with this form)** _____

Company Name _____

Contact Name _____

Contact Phone _____ Contact Fax _____ Contact E-mail _____

Ship To _____

Address _____

City _____ State _____ Zip _____

Attention _____

Ship Via: Standard: Ground Next Day: Freight Pre-Paid and Added to Customer Invoice (add 10% to net order value to estimate freight charges) 2nd Day: Freight Pre-Paid and Added to Customer Invoice (add 5% to net order value to estimate freight charges)

Special Markings: _____

Instructions:

1. Orders should be submitted on this form to qualify for QuickShip.
2. Factory lead times apply if ANY items on the order are NOT listed in the current published QuickShip offering.
3. Orders can not be changed or cancelled.

Qty.	QuickShip #	Description	Comments	Price



QuickShip | notes

fax to: 800-338-0965 or e-mail to: orders@assaabloydss-cs.com attention: customer service _____
Account # _____ **P.O. #** _____ **Page** _____ **of** _____

Instructions:

1. Orders should be submitted on this form to qualify for QuickShip.
2. Factory lead times apply if ANY items on the order are NOT listed in the current published QuickShip offering.
3. Orders can not be changed or cancelled.

Qty.	QuickShip #	Description	Comments	Price



notes



notes



To learn more

visit

www.yalelocks.com

contact

your local ASSA ABLOY
Door Security Solutions team

Yale Locks & Hardware

Address: 100 Yale Avenue, Lenoir City, TN 37771-3226 USA
Tel: 1-800-438-1951 • Fax: 1-800-338-0965
www.yalelocks.com

ASSA ABLOY Door Security Solutions Canada

Address: 160 Four Valley Drive, Vaughan, Ontario L4K 4T9 Canada
Tel: 1-800-461-3007 • Fax: 1-800-461-8989
www.assaabloy.ca

ASSA ABLOY Americas International

Tel: 1-905-821-7775 • Fax: 1-905-821-1429
www.assaabloyai.com

Yale Locks & Hardware is a division of Yale Security Inc., an ASSA ABLOY Group company.

Yale®, Reflections®, Symphony®, inTouch® and SquareBolt® are registered trademarks of Yale Security Inc., an ASSA ABLOY Group company. Other products' brand names may be trademarks or registered trademarks of their respective owners and are mentioned for reference purposes only. These materials are protected under U.S. copyright laws. All contents current at time of publication. Yale Security Inc. reserves the right to change availability of any item in this catalog, its design, construction, and/or its materials. Copyright © 2002, 2012, Yale Security Inc., an ASSA ABLOY Group company. All rights reserved. Reproduction in whole or in part without the express written permission of the Yale Security Inc., an ASSA ABLOY Group company is prohibited.

YALE, with its unique global reach and range of products, is the world's favorite lock.

ASSA ABLOY is the global leader in door opening solutions, dedicated to satisfying end-user needs for security, safety and convenience.

42024-9/12RE