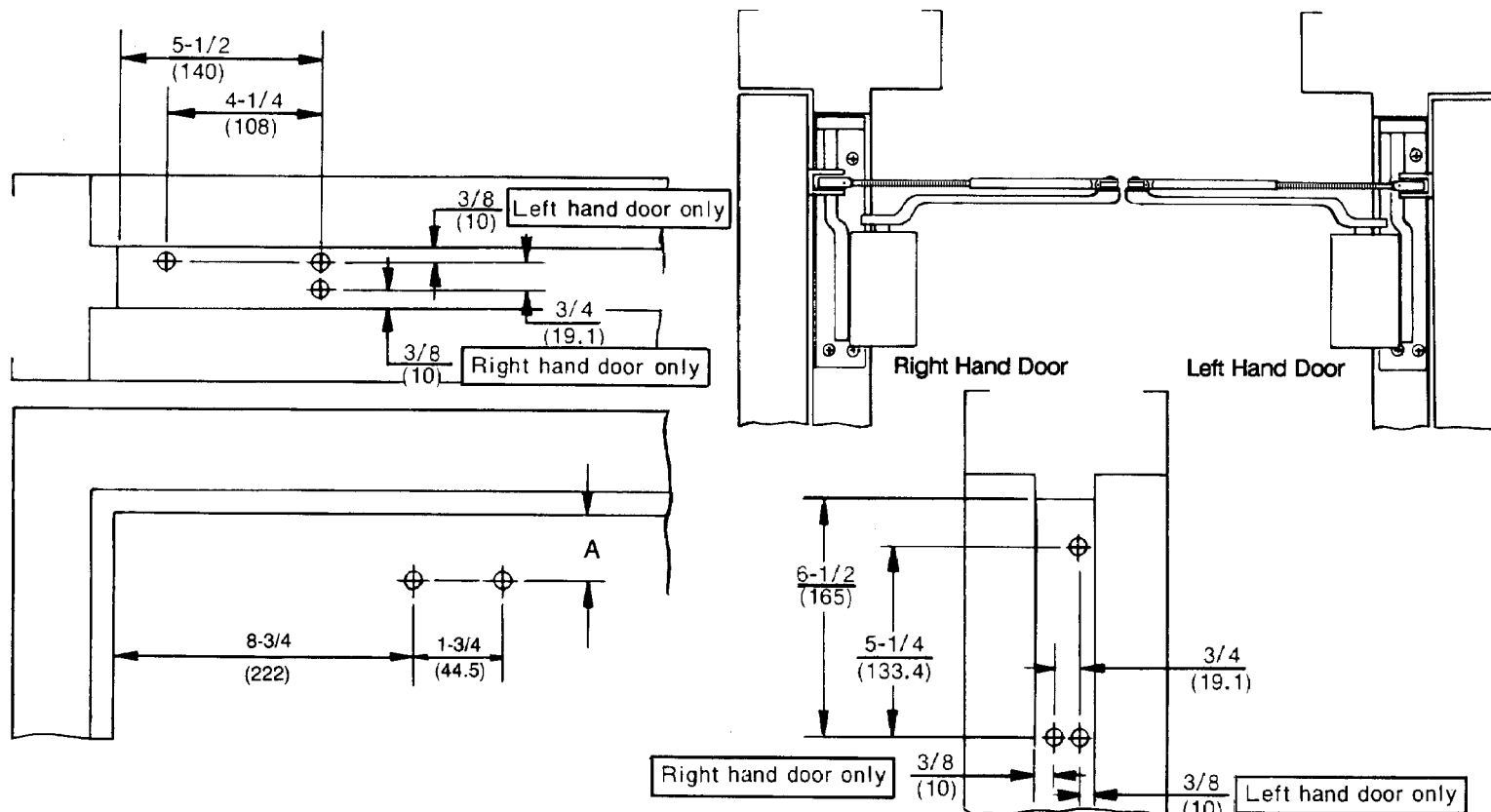


**Notes:**

1. Do not scale drawing.
2. Hand of door as noted.
3. Dimensions are in inches (mm).
4. All dimensions from face of stop.
5. Product application as charted only.
6. Hollow metal doors require channel or box type reinforcement when thru bolt mount is specified.
7. Sex bolts may be required for wood or plastic faced fire door mounting.
8. Minimum thickness recommended for reinforcements in hollow metal doors and frames: .1046" (2.66mm) unless otherwise noted.

**Caution:** Door swing may be limited by door, frame, wall or hardware conditions (including closer projection).

Hold open arm door closers are not permitted to be used on a fire door.



Corner Bracket	Closer Series	Type	Dimension A	
			inches	mm.
498	400, 4400	Non-Hold Open Only	3/4	19
2498	400, 4400	Non-Hold Open	1-7/8	48
	2400, 4480	Non-Hold Open	2-3/8	60
	1400, 4410	Hold Open	1-3/4	44

Preparation for Fasteners		
Fasteners	Door or Frame	Drill Sizes
#14 x 1-1/4" (32mm) type "A" S.M. Screw (Standard)	Wood	7/32" (5.5mm)
	Aluminum	
1/4-20 Machine Screw (Standard)	Metal	drill: #7 (.201") tap: 1/4-20
Sex nuts and bolts (Optional)	Hollow Metal	9/32" (7.00mm) thru; 3/8" (9.50mm) door face opposite to closer
	Aluminum or Wood	3/8" (9.50mm) thru
Thru bolts and grommet nuts (Optional)	All	9/32" (7.00mm) thru; 3/8" (9.50mm) dia. x 3/8" (10mm) deep door face opposite to closer

**400, 1400, 2400, 4400, 4410 and 4480 Series Door Closers  
With 498 or 2498 Corner Bracket  
Corner Bracket Installation with Non-Hold Open or Hold Open Arm**



An ASSA ABLOY Group brand

www.yalecommercial.com

TEMPLATE NUMBER

**7344-0149**

DATE

**03-08**