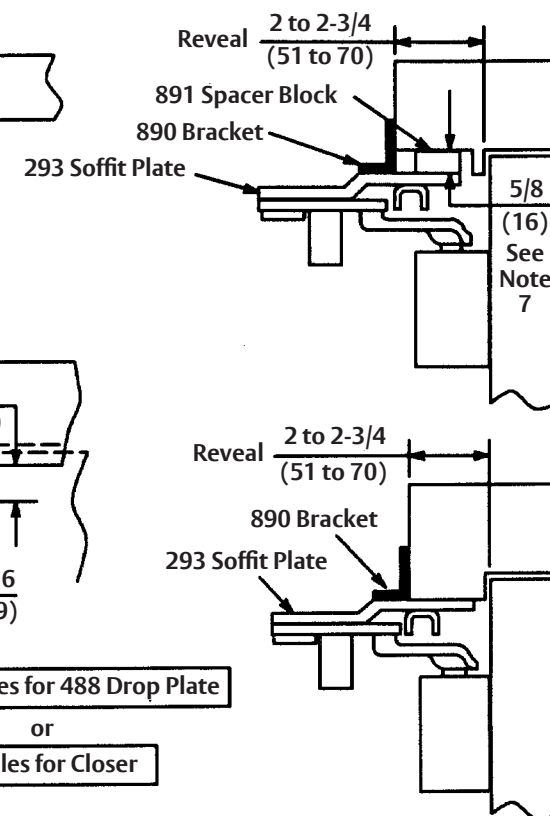
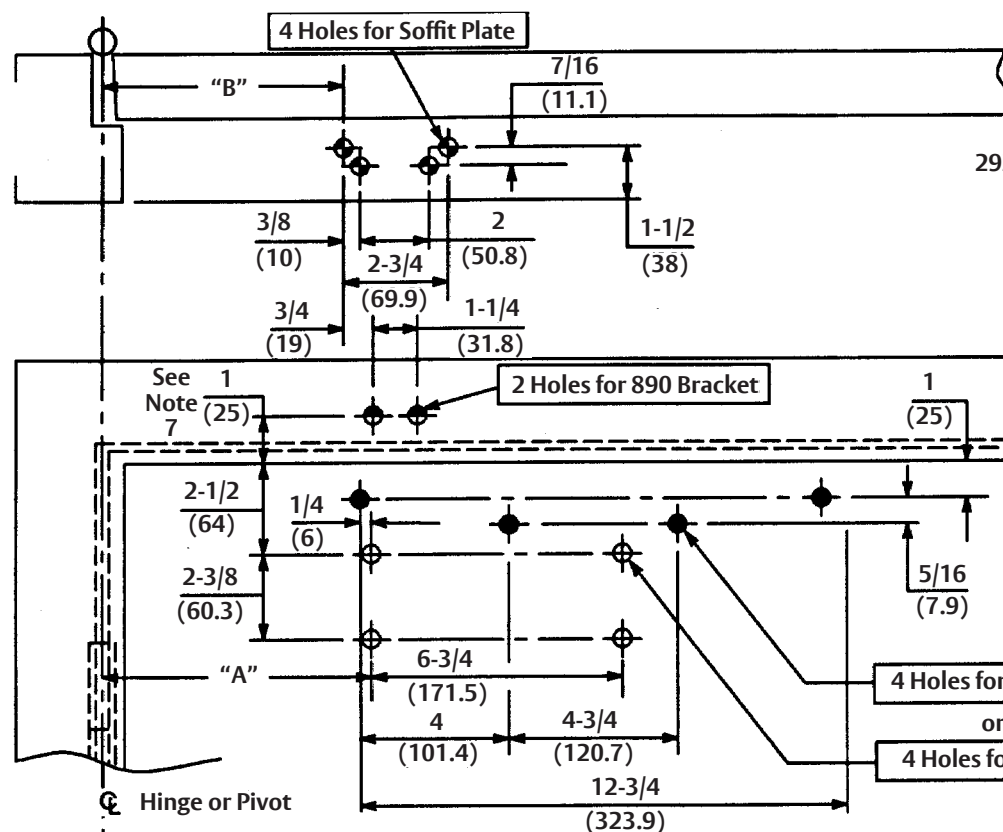


Caution: Door swing may be limited by door, frame, wall or hardware conditions.

Notes:

1. Do not scale drawing
2. Left hand door shown.
3. Dimensions are in inches (mm).
4. Hollow metal doors require channel or box type reinforcement when thru bolt mount is specified.
5. Minimum thickness recommended for reinforcements in hollow metal doors and frames: .1046" (2.6mm) unless otherwise noted.
6. Door will swing two degrees beyond hold open point to dead stop position.
7. This dimension must be taken from the same surface that 293 soffit plate is mounted to.
8. Series 4020T or 4420T are not permitted to be used on fire doors.



Door Opening Angle		1-3/4 (44) Thick Door Hung on 4-1/2 (114) Wide Template Hinges or 3/4 (19) offset Pivots	
Hold Open	Dead Stop	Dim. "A"	Dim. "B"
85°	90°	10-1/8 (257)	10-5/8 (270)
90°	95°	9-1/4 (235)	9-3/4 (248)
95°	100°	8-5/8 (219)	9-1/8 (232)
100°	105°	7-7/8 (200)	8-3/8 (213)
105°	110°	7-3/8 (187)	7-7/8 (200)
110°	115°	6-3/4 (171)	7-1/4 (184)

Preparation for Fasteners			
Fasteners	To Apply	Door or Frame	Drill Sizes
Sex Nuts and Bolts	Closer or Drop Plate	Hollow Metal	9/32" (7.00mm) thru: 3/8" (9.50mm) door face opposite to closer
		Aluminum or Wood	3/8" (9.50mm) thru
#14 x 1-1/4" (32mm) type "A" S.M. screw	Soffit Plate	Wood	7/32" (5.5mm)
		Aluminum	
1/4-20 Machine Screw		Metal	drill: #7 (.201") tap: 1/4-20
Thru bolts and grommet nuts	Optional	All	9/32" (7.00mm) thru: 3/8" (9.50mm) dia. x 3/8" (10mm) deep, door face opposite to closer

Experience a safer and more open world

4020 or 4020T Series Holder Stop Closer - Sized 2 thru 6
4420 or 4420T Series Holder Stop Closer - Multi-Size 1 to 6
With 890 bracket and With or Without 488 Drop Plate

Template Number:
80-7344-0303-010
Sheet: 1 of 1
Date: 12/23

ASSA ABLOY

1-855-557-5078
www.assaabloy.com