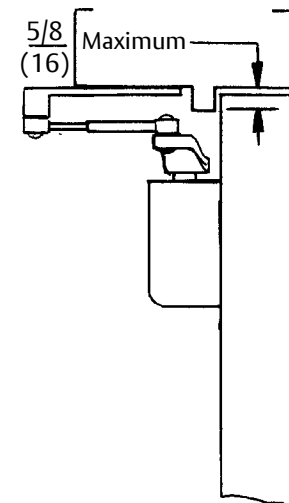
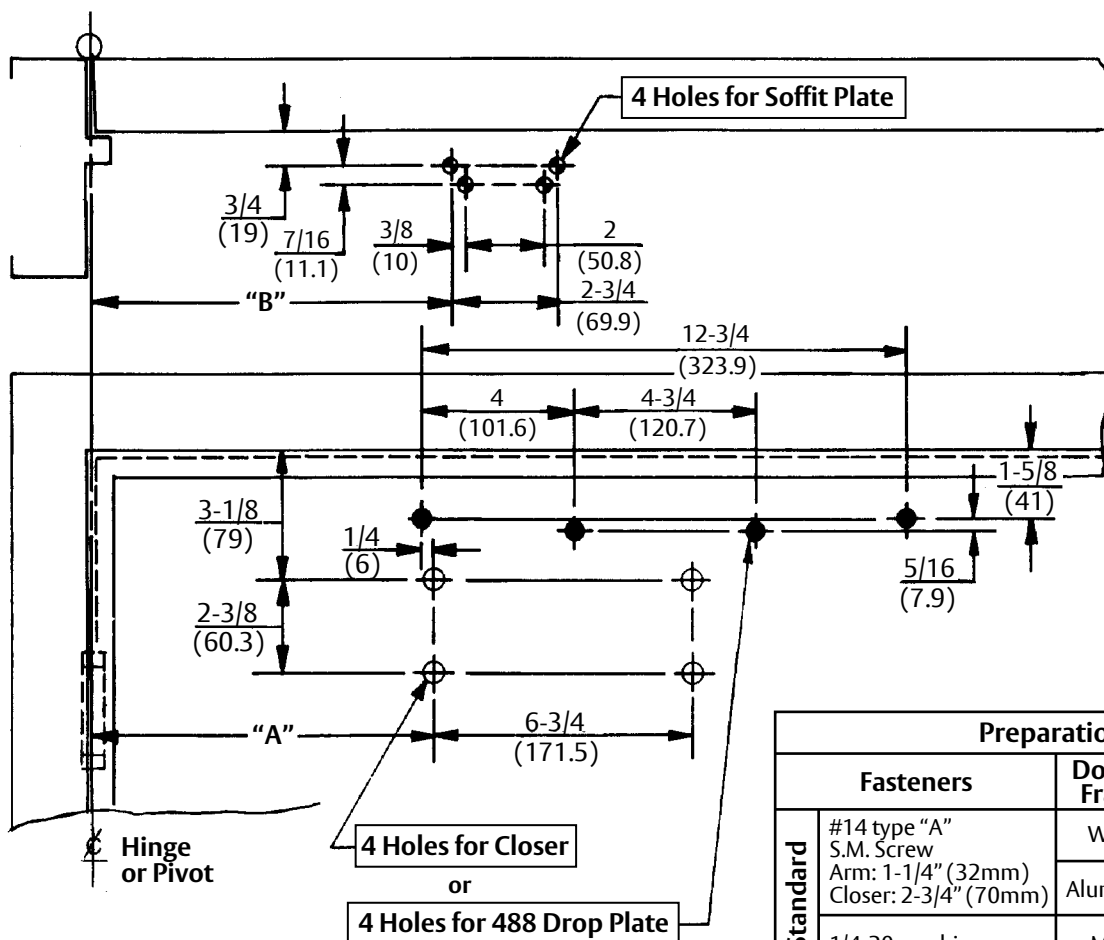


Opening	Dim. "A"	Dim. "B"
To 100°	8-3/4 (222)	9-1/4 (235)
100° to 120°	7-1/4 (184)	7-3/4 (197)
120° to 150°	6-1/4 (159)	6-3/4 (171)
150° to 180°	5-1/4 (133)	5-3/4 (146)



Caution: Door swing may be limited by door, frame, wall or hardware conditions.

Notes:

1. Do not scale drawing.
2. Left hand door shown.
3. Dimensions are in inches (mm).
4. Hollow metal doors require channel or box type reinforcement when thru bolt mount is specified.
5. Sex bolts may be required for wood or plastic faced fire door mounting.
6. Minimum thickness recommended for reinforcements in hollow metal doors and frames: 0.1046" (2.66mm) unless otherwise noted.

Preparation for Fasteners			
	Fasteners	Door or Frame	Drill Sizes
Standard	#14 type "A" S.M. Screw Arm: 1-1/4" (32mm) Closer: 2-3/4" (70mm)	Wood	7/32" (5.5mm)
		Aluminum	
	1/4-20 machine screw	Metal	drill: #7 (.201") tap: 1/4-20
Optional	Sex nuts and bolts	Hollow Metal	9/32" (7.00mm) thru; 3/8" (9.50mm) on door or transom face opposite to closer
		Aluminum or Wood	3/8" (9.50mm) thru
	Thru bolts and grommet nuts	All	9/32" (7.00mm) thru; 3/8" (9.50mm) dia. x 3/8" (10mm) deep on door or transom face opposite to closer

Experience a safer and more open world

PA400 Series Door Closer - Sized 2 thru 6
PA 4400 Series Door Closer - Multi-Size 1 to 6
With 299 Soffit Plate and With or Without 488 Drop Plate
Parallel Non-Hold Open Arm Application

Template Number: 7344-0205
Sheet: 1 of 1
Date: 12/23

ASSA ABLOY

1-855-557-5078
www.assaabloy.com