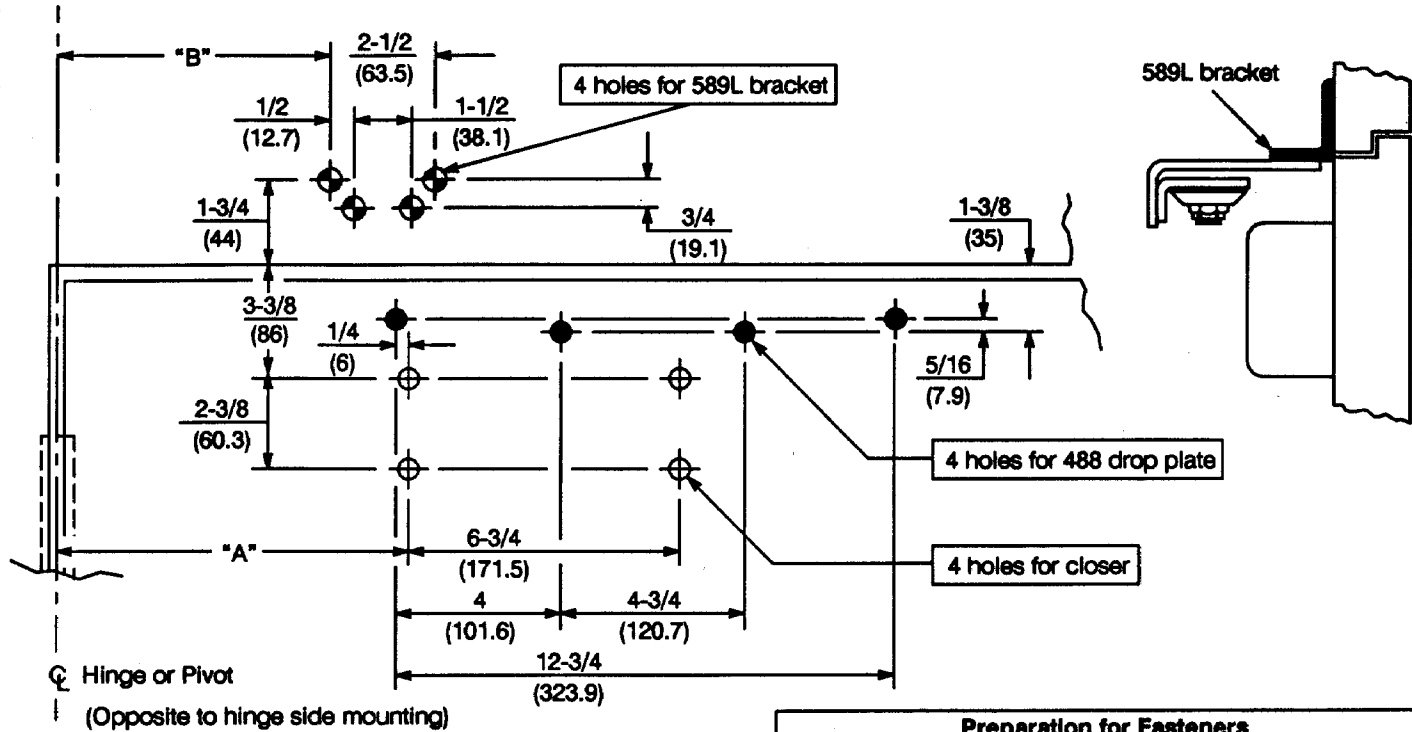


Opening	Dim. "A"	Dim. "B"
To 100°	8-3/4 (222)	9-3/8 (238)
100° to 120°	7-3/4 (197)	8-3/8 (213)
120° to 150°	6-3/4 (171)	7-3/8 (187)
150° to 180°	5-3/4 (146)	6-3/8 (162)



Caution: Door swing may be limited by door, frame, wall or hardware conditions.

Notes:

1. Do not scale drawing.
2. Left hand door shown.
3. Dimensions are in inches (mm).
4. Hollow metal doors require channel or box type reinforcement when thru bolt mount is specified.
5. Sex bolts may be required for wood or plastic faced fire door mounting.
6. Minimum thickness recommended for reinforcements in hollow metal doors and frames: .1046" (2.66mm) unless otherwise noted.
7. Hold Open Arm closers without fusible -link release are not permitted to be used on fire doors.

Preparation for Fasteners			
	Fasteners	Door or Frame	Drill Sizes
Standard	#14 type "A" S.M. screw Arm: 1-1/4" (32mm) Closer: 2-3/4" (70mm)	Wood	7/32" (5.5mm)
		Aluminum	
Standard	1/4-20 machine screw	Metal	drill: #7 (.201") tap: 1/4-20
Optional	Sex nuts and bolts	Hollow Metal	9/32" (7.00mm) thru; 3/8" (9.50mm) on door or transom face opposite to closer
		Aluminum or Wood	3/8" (9.50mm) thru
Optional	Thru bolts and grommet nuts	All	9/32" (7.00mm) thru; 3/8" (9.50mm) dia. x 3/8" (10mm) deep on door or transom face opposite to closer

PA1400 Series Door Closer – Sized 2 thru 6
(PA)4410 Series Door Closer – Multi-Size 2 to 6
With 589L Adaptor Bracket and With or Without 488 Drop Plate
Parallel Hold Open

Yale

Yale Security Inc.

1902 Airport Road, MONROE, NC 28110

TEMPLATE NUMBER

80-7344-0215-010

DATE

5-03