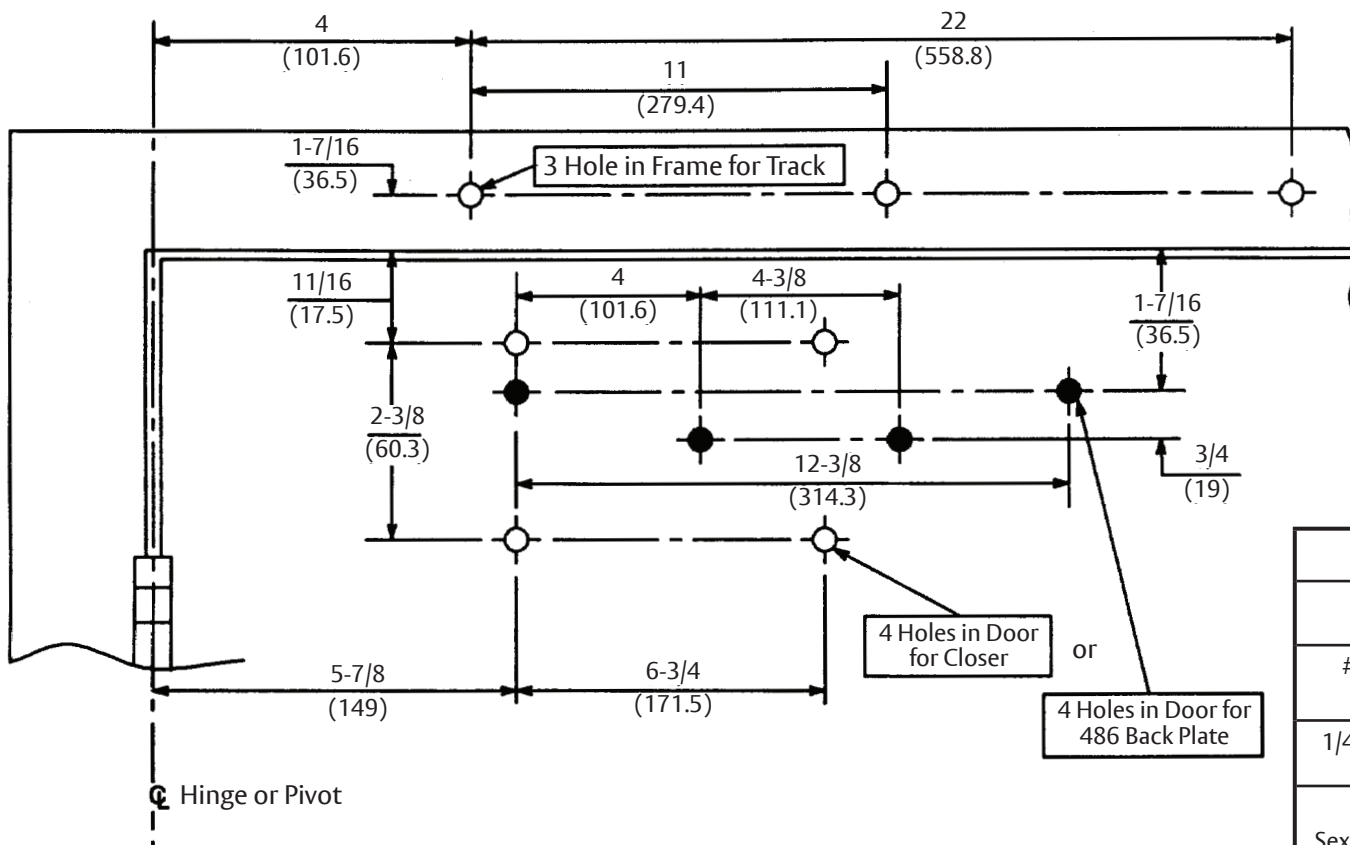


IMPORTANT: From centerline of pivot point to end of track is 26-1/2" (673mm).



Notes:

1. Right hand door shown.
2. Do not scale drawing.
3. Dimensions are given in inches (mm).
4. Closer mounted with sex nuts requires that door silencers or 486 back plate be used.
5. Minimum ceiling clearance for unit is 2" (50mm).
6. Series 1400ST or 4410ST are not permitted to be used on fire doors.
7. Maximum door opening:

Non-Hold Open with Spring Buffer	-110°
Non-Hold Open without Spring Buffer	-180°
Hold Open	-110°

Preparation for Fasteners		
Fasteners	Door or Frame	Drill Sizes
#14 type "A" S.M. screw	Wood	7/32" (5.50mm)
1/4"-20 machine screw	Metal	drill: #7 (.201") tap: 1/4"-20
Sex nuts and bolts (Optional)	Hollow Metal	9/32" (7.00mm) thru; 3/8" (9.50mm) door face opposite to closer
	Aluminum or Wood	3/8" (9.50mm.) through
Thru bolt and grommet nuts (Optional)	All	9/32" (7.00mm) thru; 3/8" (9.50mm) dia. x 3/8" (10mm) deep door face opposite to closer

Experience a safer and more open world

Copyright © 2004, 2024, ASSA ABLOY Access and Egress Hardware Group, Inc. All rights reserved. Reproduction in whole or in part without the express written permission of ASSA ABLOY Access and Egress Hardware Group, Inc. is prohibited.

400ST, 1400ST Series Door Closer - Sized 4 thru 6
4400ST, 4410ST Series Door Closer - Multi-Size 1 to 6
 With or Without 486 Back Plate
 Hinge Side Slide Track Application, Non-Hold
 Open or Hold Open

Template Number:
80-7344-0501-010
Sheet: 1 of 1
Date: 01/24

ASSA ABLOY

1-855-557-5078
www.assaabloy.com