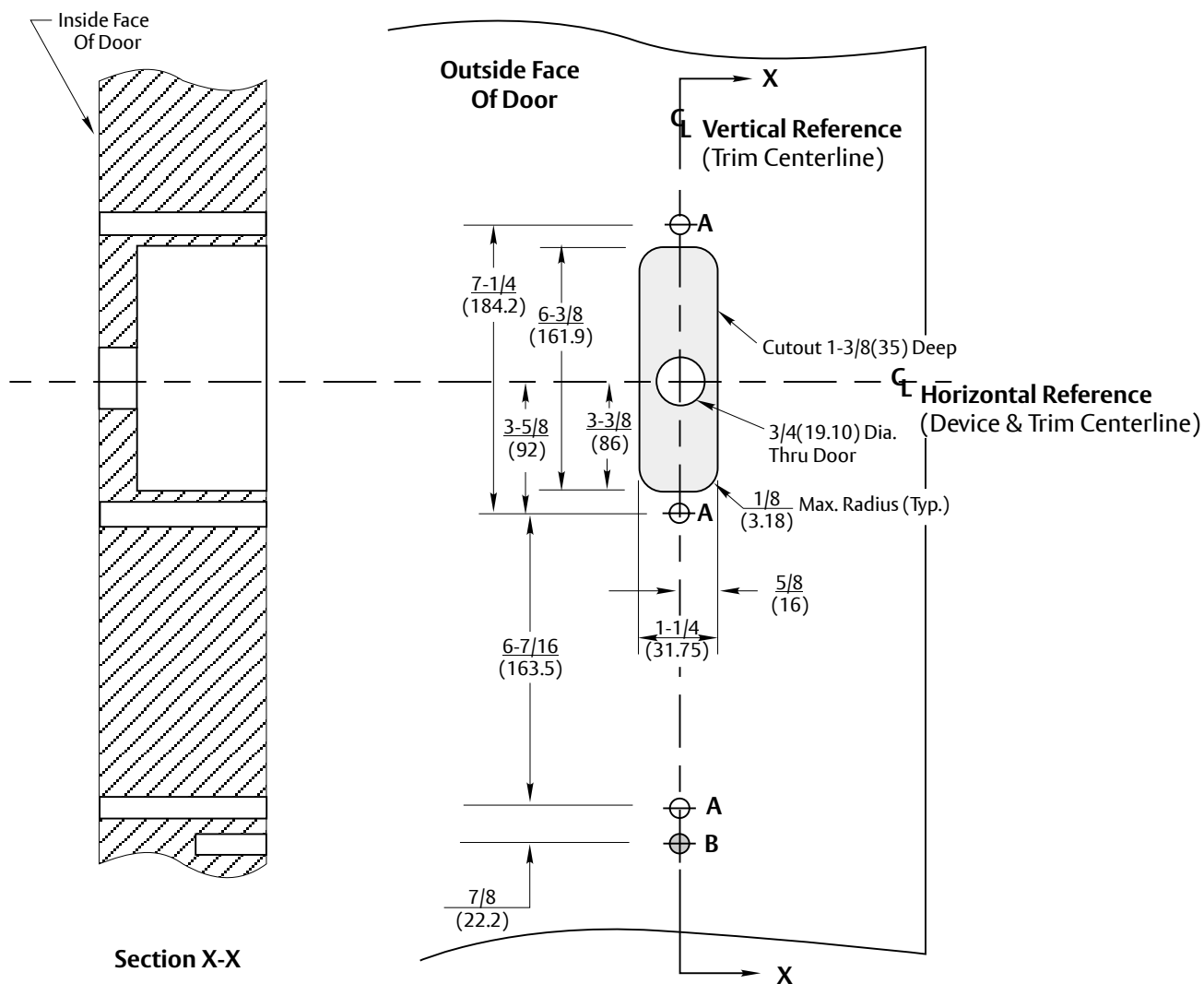
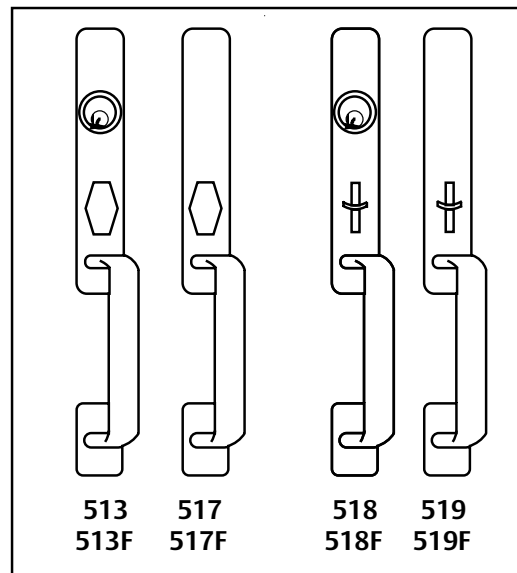


NOTES:

1. This template is an addition to the device template. Locate centerlines using horizontal and vertical references on device template.
2. Do not scale drawing.
3. Dimensions are in inches (mm).
4. LHR door shown. Preparation is typical for both door hands.
5. Prepare mounting holes when installing trim.
6. Provide adequate structural support to maintain door integrity during

Hole	Specification
A	1/2(12.50) Dia. Thru Door
B	3/8(9.50) Dia. X 3/4(19) Deep



RESPONSIBILITY
 DOOR AND FRAME MANUFACTURERS ARE RESPONSIBLE FOR PROVIDING ADEQUATE CONSTRUCTION OR REINFORCEMENTS FOR PROPER INSTALLATION OF HARDWARE SHOWN. ALL ARCHITECTURAL BUILDERS HARDWARE MUST BE INSTALLED ON PROPERLY REINFORCED DOORS AND FRAMES, REGARDLESS OF TYPE, MATERIAL, OR METHOD OF CONSTRUCTION.

513(F),517(F),518(F) and 519(F)
Narrow Escutcheon Trim
 With 7200(M) or 7200(MF) Series Rim and Vertical Rod Exit Devices
 Wood or Composite Door Preparation
Contact us for support at 1-855-557-5078.

ASSA ABLOY

SUPERSEDES	8/99	DO NOT SCALE DRAWING
TEMPLATE NUMBER	7400-1513	DATE 12-23