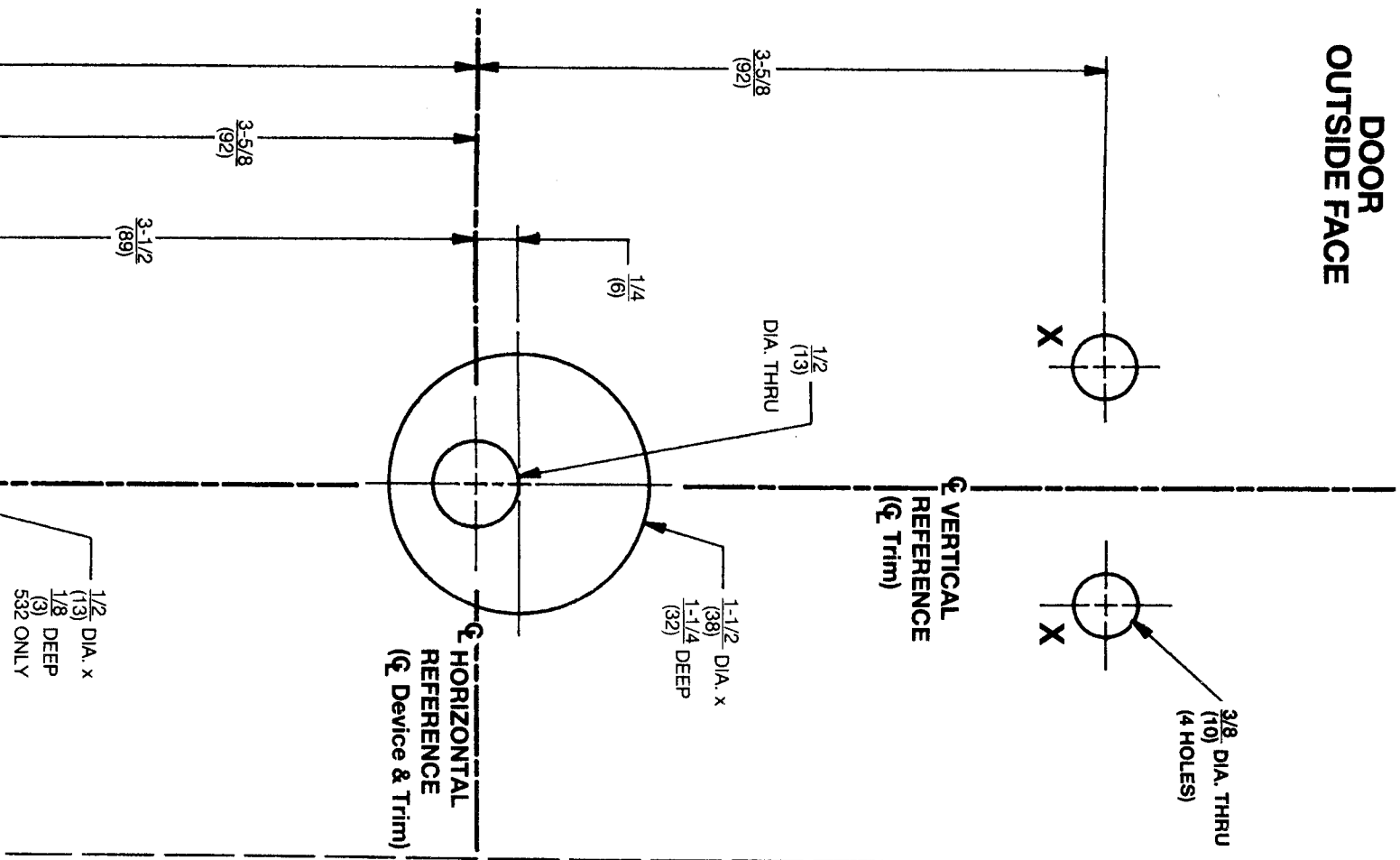
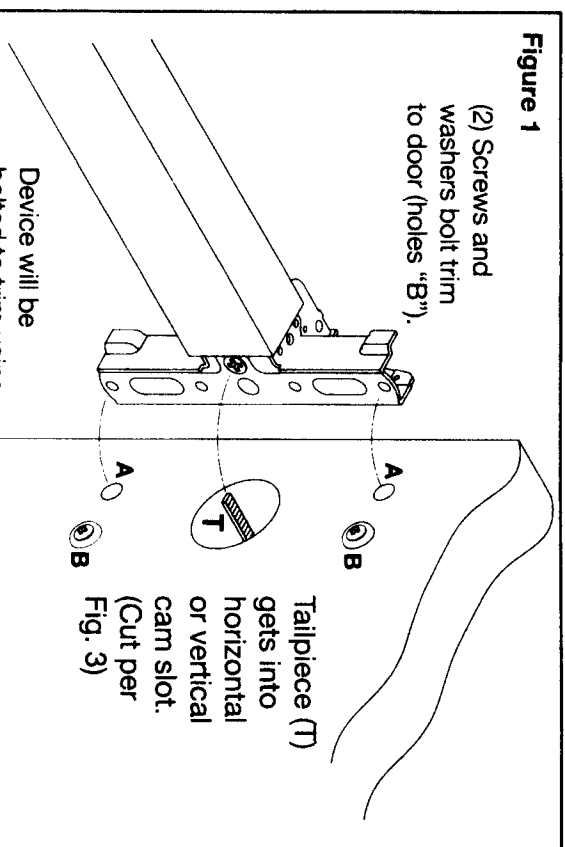


DOOR OUTSIDE FACE



Installation Instructions

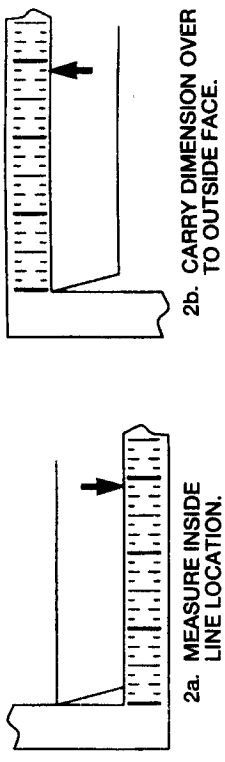
1. Assemble trim. See other side for components and instructions.
2. After marking door inside face for device location (Device Instructions), carry "Vertical Reference Centerline" from inside door face. Follow steps 2a. and 2b. in Figure 2 below.
3. Carry "Horizontal Reference Centerline" from inside to outside door face.
4. Align trim template and tape to door outside face.
CAUTION: Office copiers and facsimile machines may change the size of a drawing and make the template inaccurate to use as a door marker. If this is not the original template packed with the trim, use only the dimensions written on the template to locate the holes on the door (do not use the template as a door marker).
5. Spot holes and prepare door for trim.
6. Mount trim to door. Fasten finger tight only with 2 screws and washers seating on door, as shown in Figure 1, plus one engaged to long escutcheon bottom stud.
7. Cut cylinder tailpiece as shown in Figure 3.
8. Seat device so that cylinder tailpiece penetrates cam slot, as shown in Figure 1. Continue as shown in device instructions.



holes "A" (closest to door lock edge).

Trim Door. Shown

Figure 2

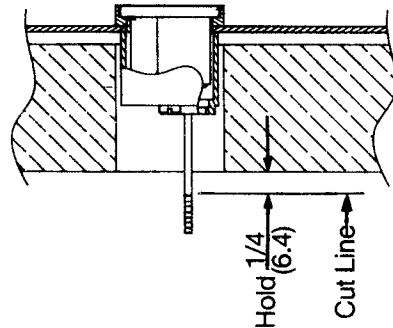


2b. CARRY DIMENSION OVER TO OUTSIDE FACE.

2a. MEASURE INSIDE LINE LOCATION.

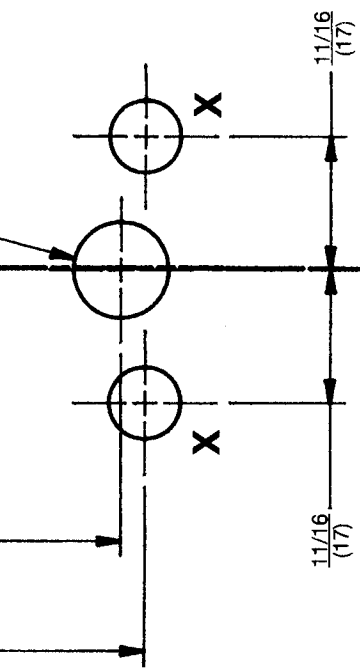
Figure 3

Device Mounting Surface (See Note)



NOTE: Measure from device seat (door face or shim surface).

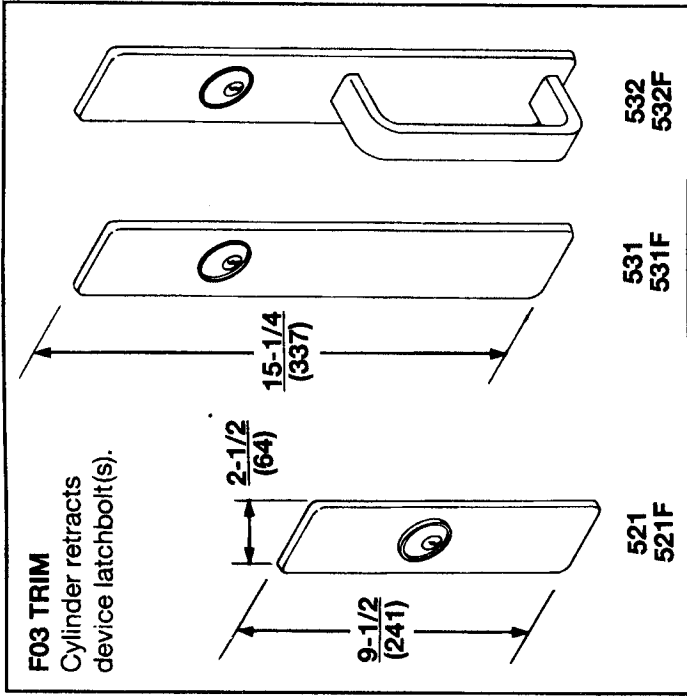
Dimensions given in inches (mm).



9-15/16 (252)

3/8 DIA. THRU (10) (531, 532 ONLY)

CUT LINE



Yale® 521(F), 531(F) & 532(F)
Series Trim
Installation Template

521(F), 531(F) & 532(F) Trim Assembly Instructions

1. Check cylinder components. See "Cylinder Applications" chart. Non-standard cylinder rings and mounting screws must be supplied with optional cylinders.

2. Assemble cylinder. Insert Cylinder Housing prongs into Escutcheon matching notches. Pass Cylinder tailpiece thru Cylinder Ring and Cylinder Housing slot in cam. Bolt

Cylinder seated in Cylinder Ring recess (DO NOT OVERTIGHTEN SCREWS).

3. Check cylinder action. Cylinder key must freely rotate tailpiece when turned in either direction.

4. Assemble Pull (532 ONLY).

2 STUDS AWAY FROM LOCK EDGE

1/4-20 Oval Head Machine Screws
Standard: 81-0013-0670-036
Others: As ordered.

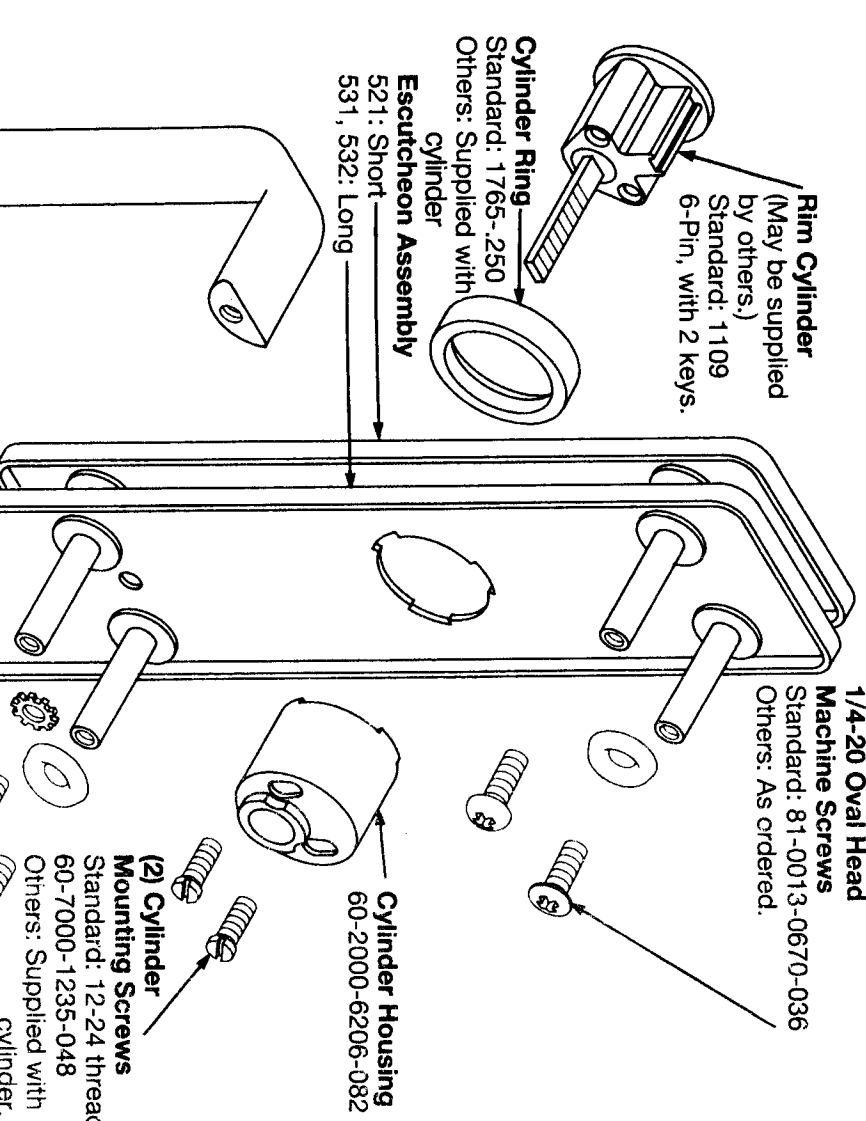
Rim Cylinder
(May be supplied by others.)
Standard: 1109
6-Pin, with 2 keys.

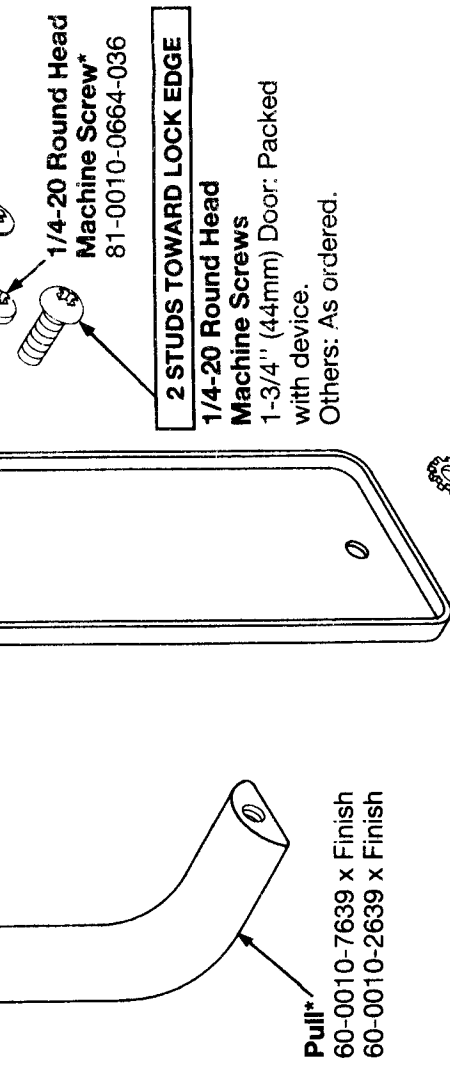
Cylinder Ring
Standard: 1765-.250
Others: Supplied with cylinder

Escutcheon Assembly
521: Short
531, 532: Long

Cylinder Housing
60-2000-6206-082

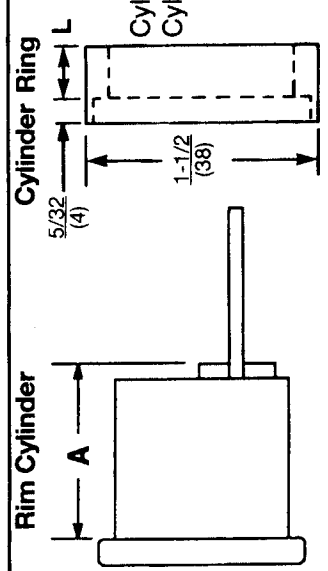
(2) Cylinder Mounting Screws
Standard: 12-24 thread
60-7000-1235-048
Others: Supplied with cylinder





CYLINDER APPLICATIONS

YALE CYLINDER	CYLINDER RING	CYLINDER MOUNTING SCREWS
6-PIN, 1109 (STD.), 5109	1765-.250 (STD.)	60-7000-1235-048 (STD.)
7-PIN, 1109, 5109	1765-.406	
6-PIN, 1709 (CMK)	1765-.656	34-2311-8738-048
7-PIN, 1709 (CMK)	1765-.750	
6-PIN, 1193 (RC)	1765-.437	10-1193-1018-048
7-PIN, 1193 (RC)	1765-.656	
6-PIN, U5109 (HS)	1766	60-7000-1235-048
7-PIN, U5109 (HS)		



Note: Parts marked (*) are for 532 only.