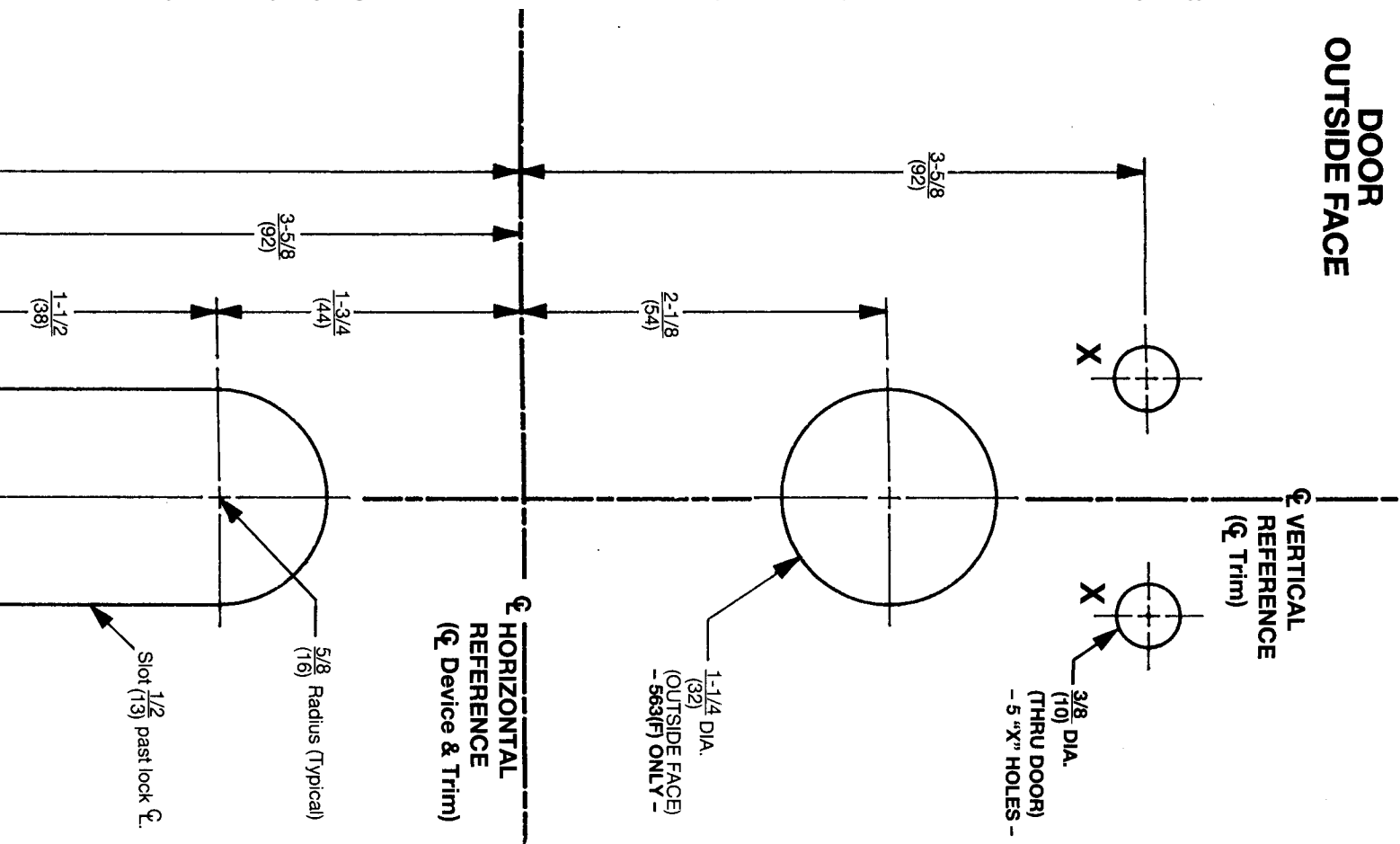
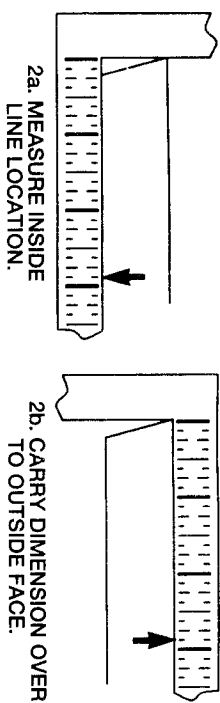


# Installation Instructions

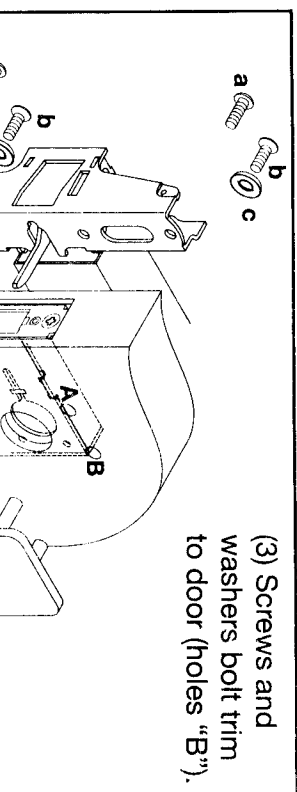
## DOOR OUTSIDE FACE

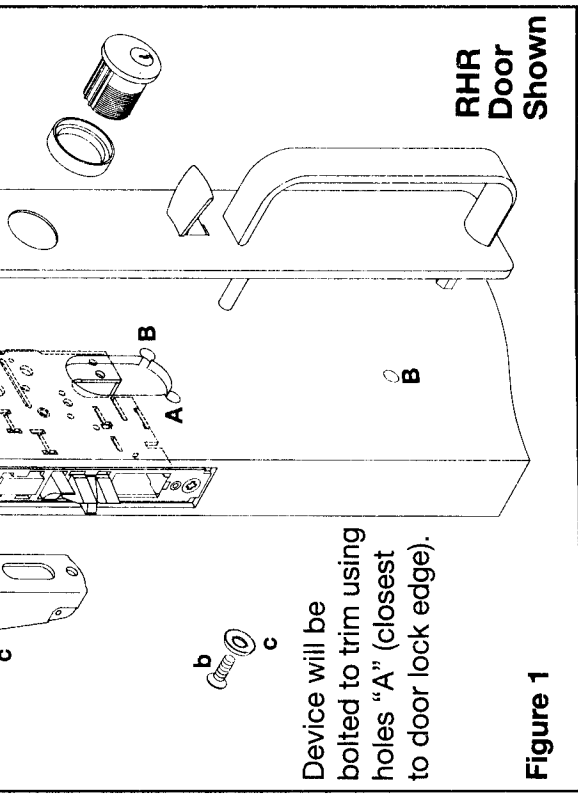
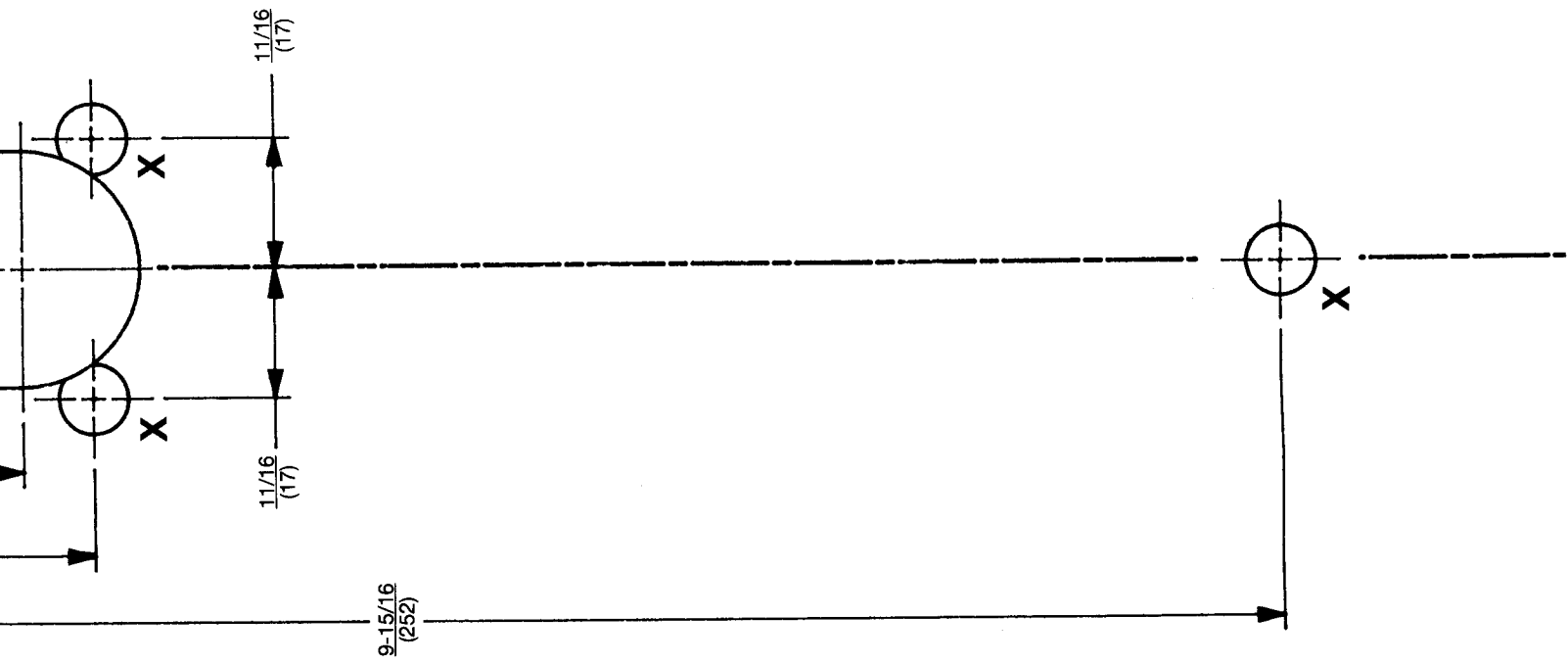


1. Assemble trim. See other side for components and instructions.
2. After marking door inside face for device location (Device Instructions), carry "Vertical Reference Centerline" from inside door face. Follow steps 2a. and 2b. below.

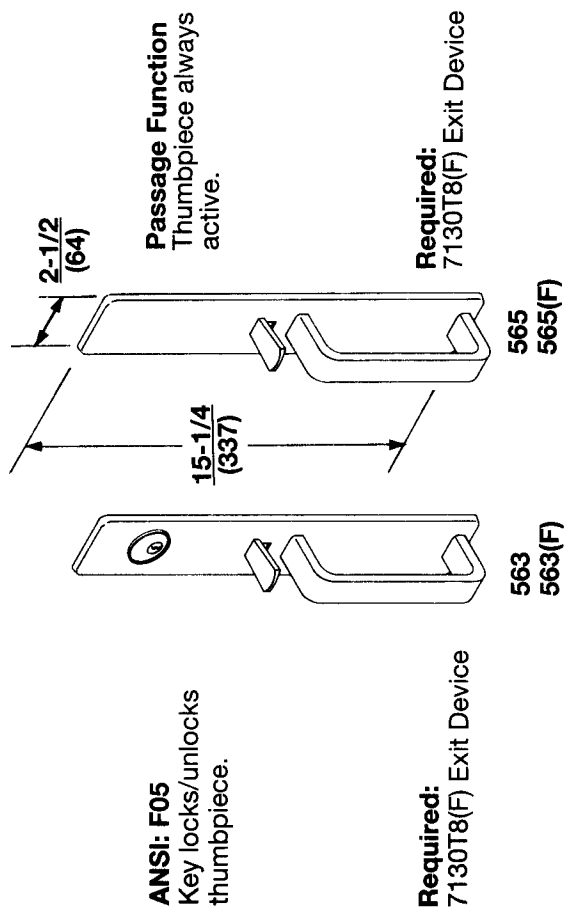


3. Carry "Horizontal Reference Centerline" from inside to outside door face.
4. Align trim template and tape to door outside face.  
**CAUTION:** Office copiers and facsimile machines may change the size of a drawing and make the template inaccurate to use as a door marker. If this is not the original template packed with the trim, use only the dimensions written on the template to locate the holes on the door (do not use the template as a door marker).
5. Spot holes and prepare door for trim.
6. Mount trim to door (Fig. 1). Fasten finger tight only with 3 screws (b) and washers (c), seated on door. For 563(F) only, thread cylinder into lock till seated in cylinder ring recess and keyway is positioned as shown. Lock cylinder in place (cylinder set screw accessible thru lock front).
7. Continue as shown in device instructions.





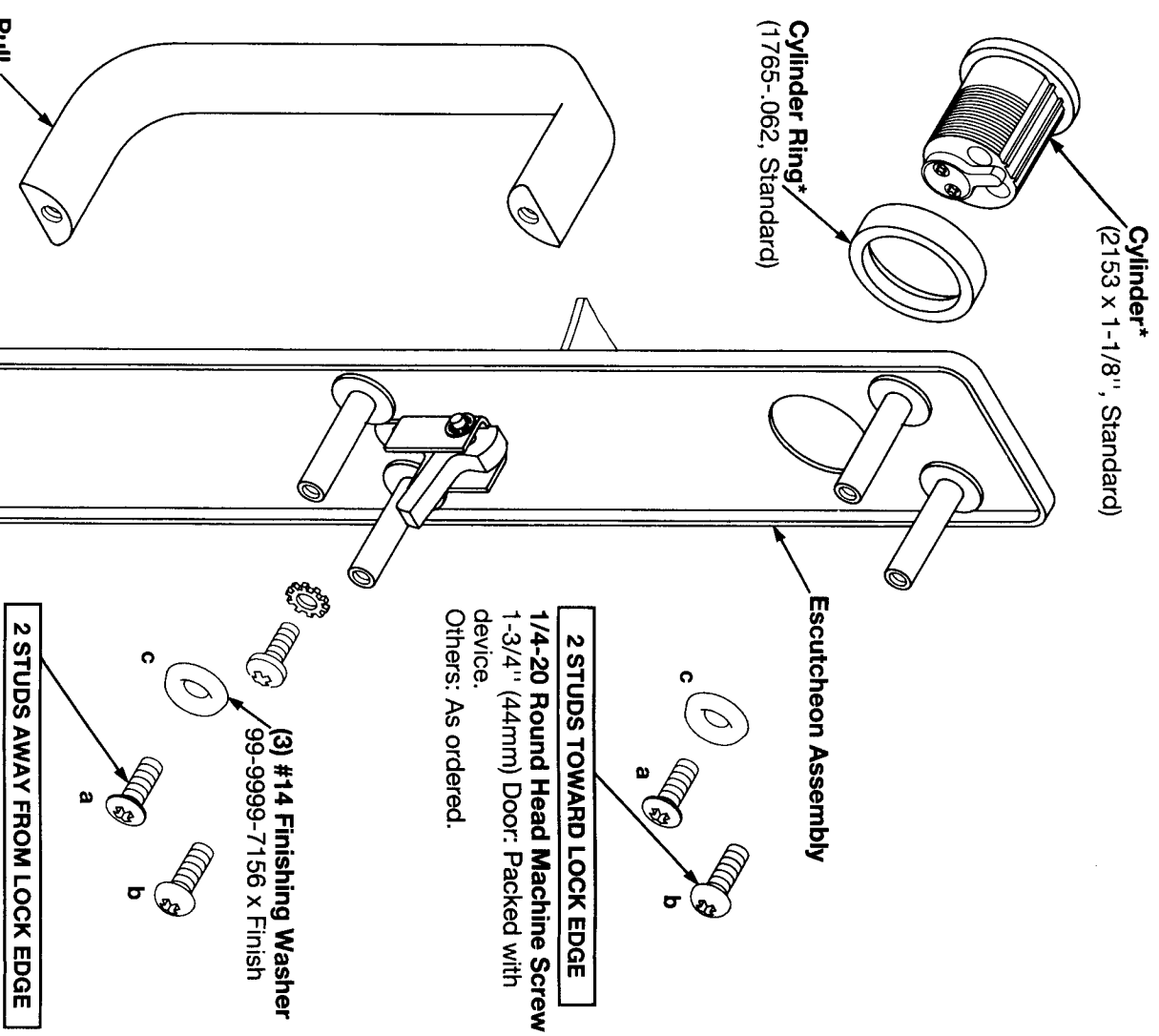
Dimensions given in inches (mm).



**Yale® 563(F) & 565(F) Series**  
**Exit Device Trim**  
**Installation Template**

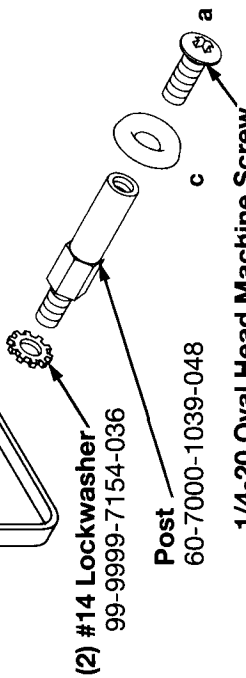
# 563(F) & 565(F) TRIM COMPONENTS For Mortise Exit Devices Using 38T(F) Mortise Locks.

Assemble components as shown.



Standard: 81-0013-0670 x Finish  
Others: As ordered.

60-0010-7639 x Finish  
60-0010-2639 x Finish



(2) #14 Lockwasher  
99-9999-7154-036

Post  
60-7000-1039-048

1/4-20 Oval Head Machine Screw  
Standard: 81-0013-0670 x Finish  
Others: As ordered.

**NOTE: Parts marked (\*) are for 563(F) only.**

