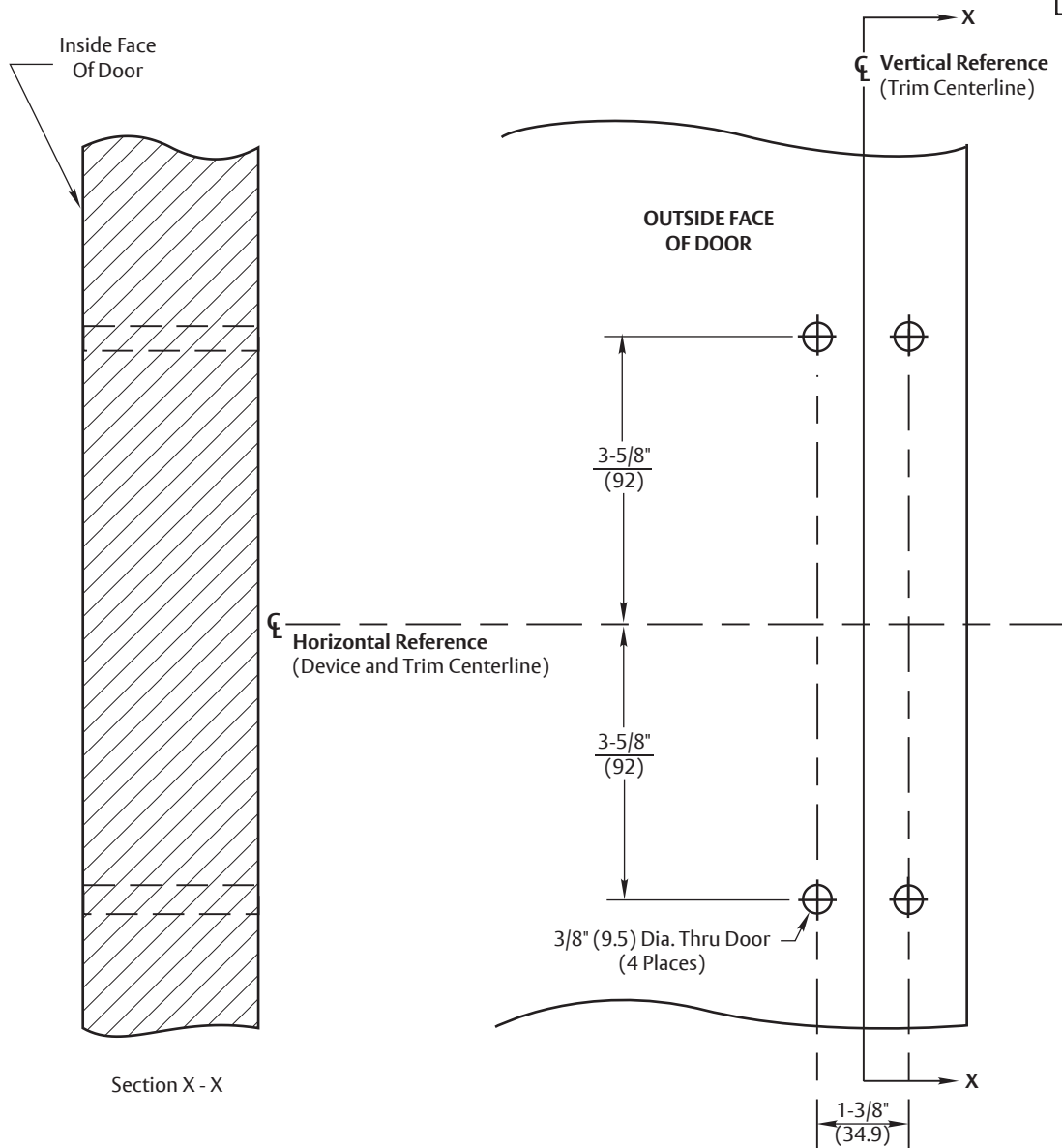
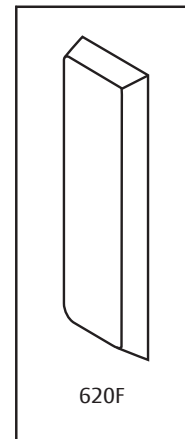


NOTES:

1. This template is an addition to the device template. Locate centerlines using horizontal and vertical references on device template.
2. Do not scale drawing.
3. Dimensions are in inches (mm).
4. LHR door shown. Preparation is typical for both door hands.
5. Prepare mounting holes when installing trim.



RESPONSIBILITY

DOOR AND FRAME MANUFACTURERS ARE RESPONSIBLE FOR PROVIDING ADEQUATE CONSTRUCTION OR REINFORCEMENTS FOR PROPER INSTALLATION OF HARDWARE SHOWN. ALL ARCHITECTURAL BUILDERS HARDWARE MUST BE INSTALLED ON PROPERLY REINFORCED DOORS AND FRAMES, REGARDLESS OF TYPE, MATERIAL, OR METHOD OF CONSTRUCTION.

620F Trim

With 1500(F), 2100(F), 6100(F), or 7100(F) Series Rim, Mortise and Vertical Rod Exit Devices

Wood or Composite Door Preparation

Contact us for support at 1-800-438-1951.

ASSA ABLOY

SUPERSEDES 7400-1620 (05-15)	DO NOT SCALE DRAWING	
TEMPLATE NUMBER	7400-1620	DATE 12-23