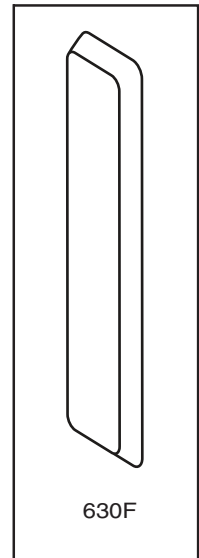
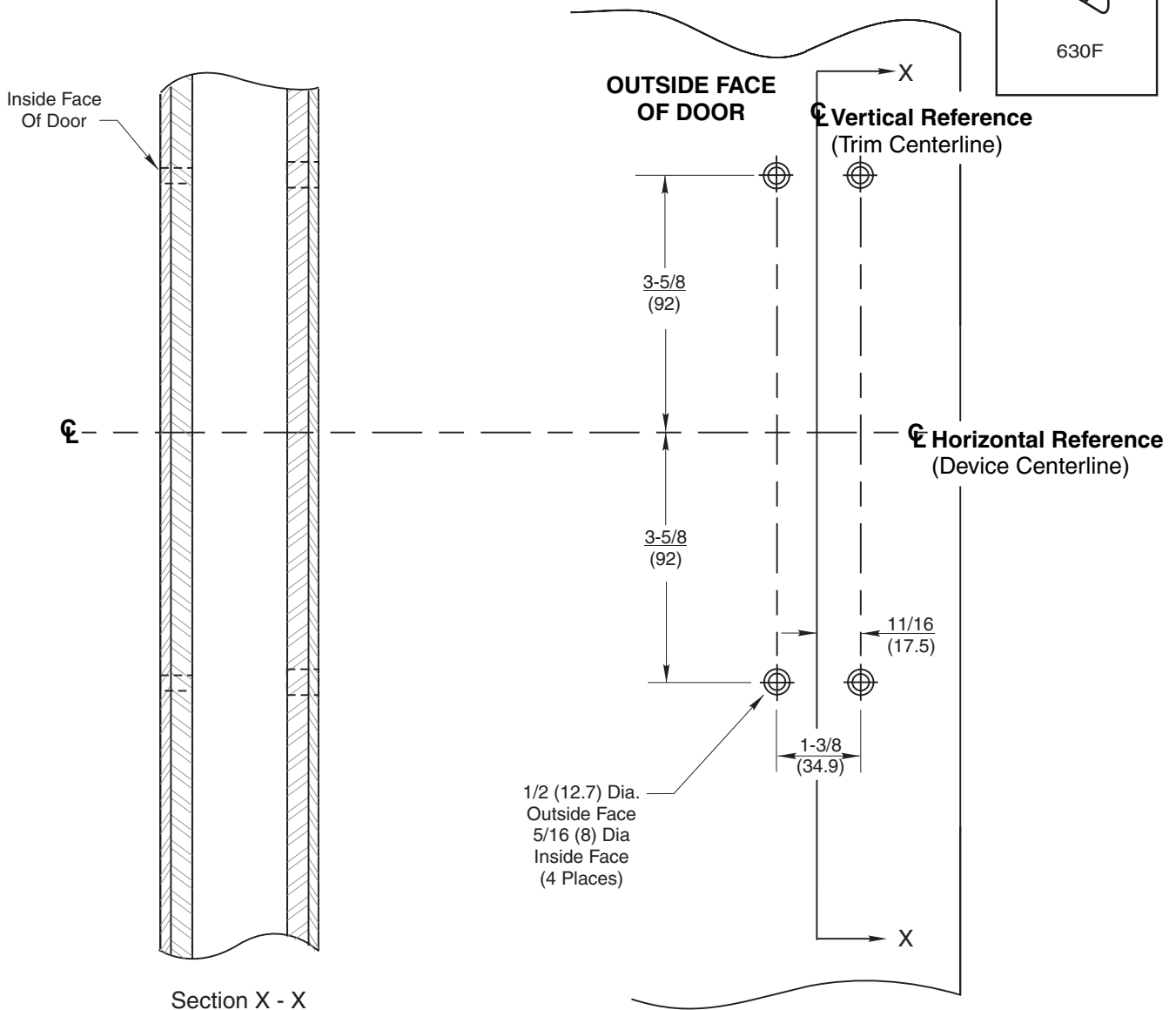


**Notes:**

1. This template is an addition to the device template. Locate centerlines using horizontal and vertical references on device template.
2. Do not scale drawing.
3. Dimensions are in inches (mm).
4. LHR door shown. Preparation is typical for both door hands.
5. For door reinforcement see template 7400-0000.
6. Provide adequate internal support to prevent door deformation from bolting trim to the device.



630F



Section X - X

**630F Trim**  
 With 1500(F), 2100(F) or 7100(F) Series  
 Rim, Mortise and Vertical Rod Exit Devices  
**Metal Door Preparation**


**1-800-438-1951**  
[www.yalelocks.com](http://www.yalelocks.com)

TEMPLATE NUMBER	DATE
<b>7400-0630</b>	<b>08-12</b>