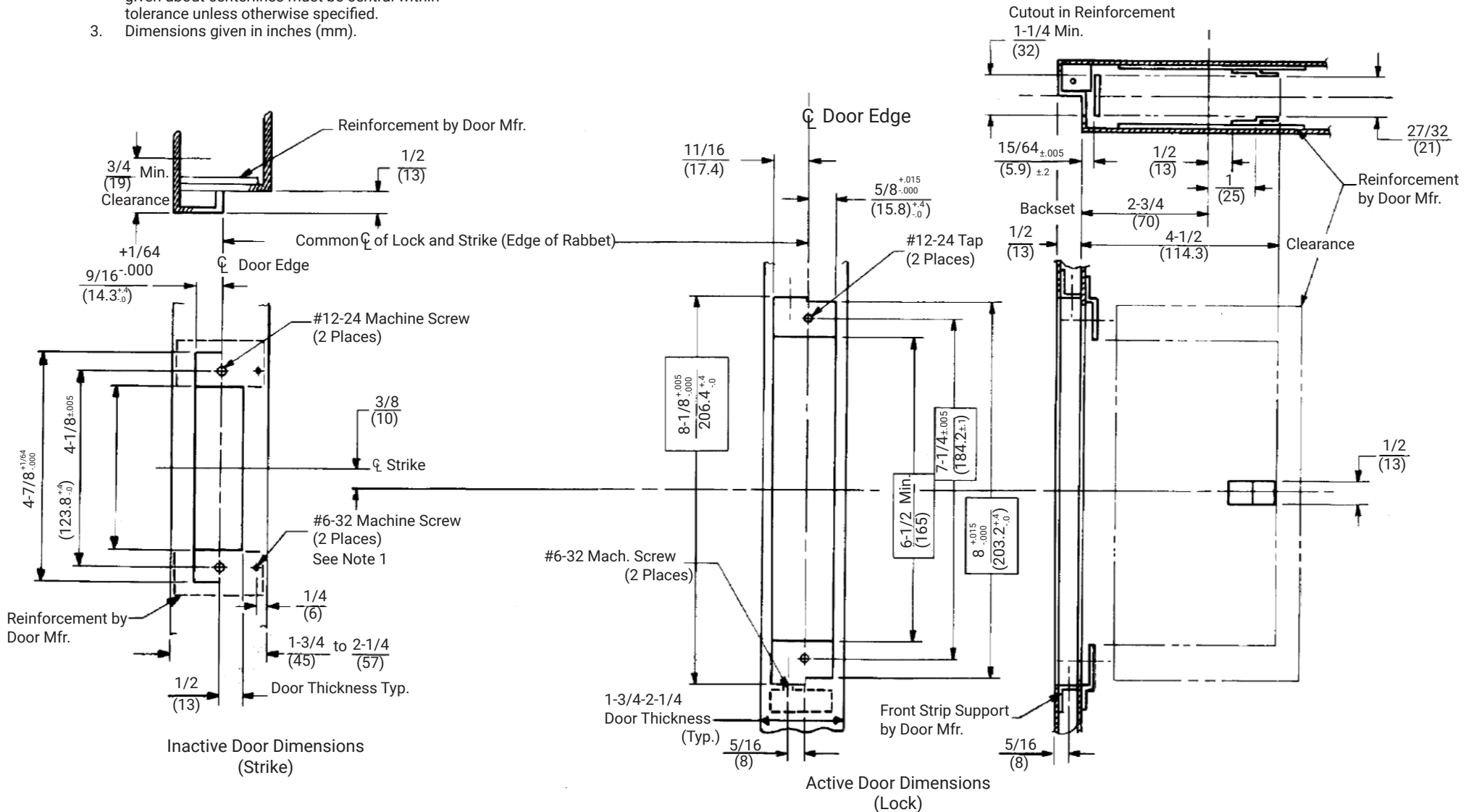


DO NOT SCALE

Notes:

1. These holes are field drilled on 2-1/4" (57mm) thick doors only.
2. Tolerances shown are for cutouts. All dimensions given about centerlines must be central within tolerance unless otherwise specified.
3. Dimensions given in inches (mm).



Experience a safer and more open world

Copyright © 2023, 2024, ASSA ABLOY ACCENTRA™ Access and Egress Hardware Group, Inc. All rights reserved. Reproduction in whole or in part without the express written permission of ASSA ABLOY Access and Egress Hardware Group, Inc. is prohibited.

8600,8700, & 8800 Series Locks
 Pair of Rabbeted H.M. Doors
 Locks and Strike Preparation

1-855-557-5078, Ext. 2 www.accentra-assaabloy.com

Template Number:
 7086-0003

Date: 04/24

Sheet: 1 of 1

ACCENTRA
ASSA ABLOY