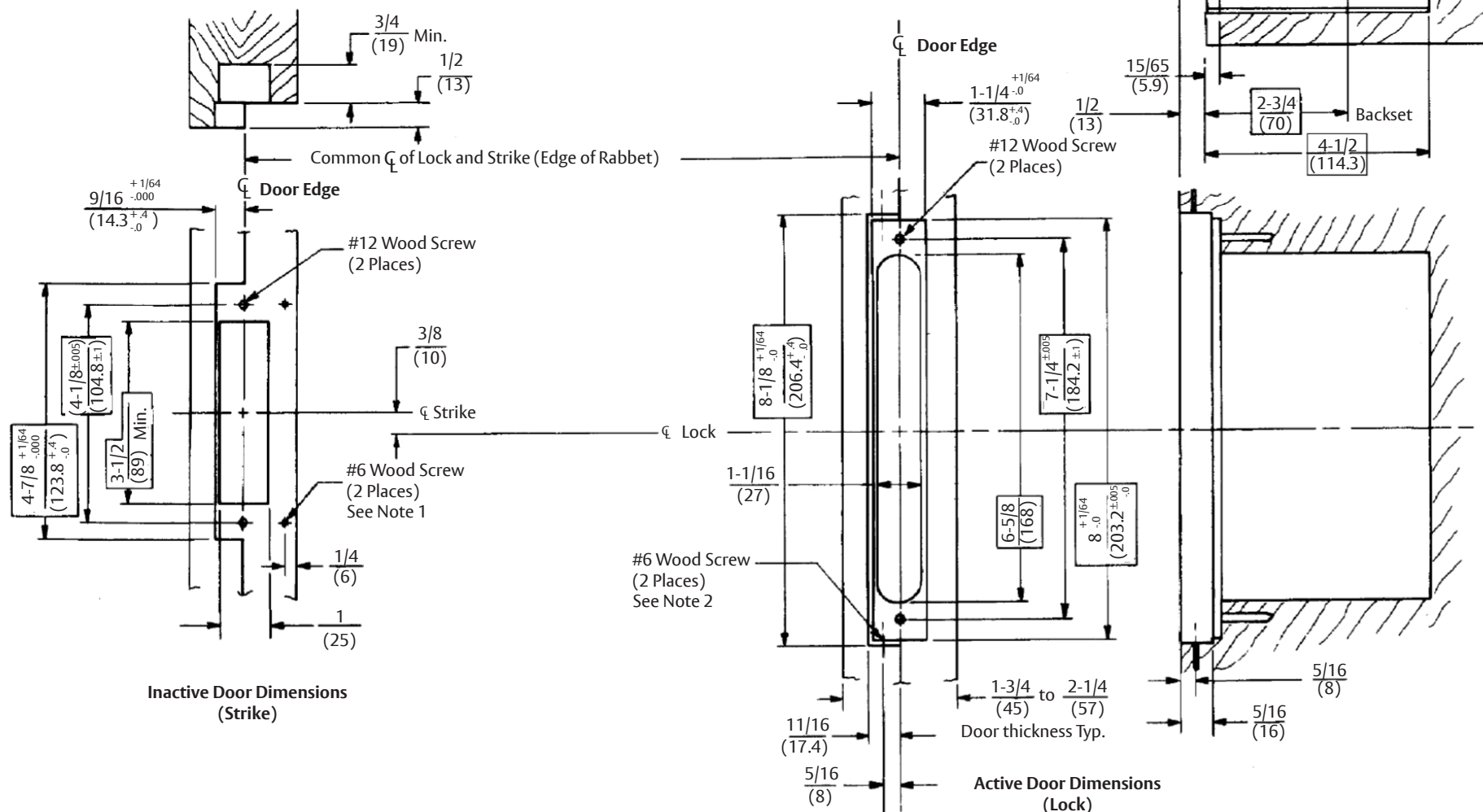


**DO NOT SCALE**

**Notes:**

1. These holes are field drilled on 2-1/4" (57mm) thick doors only.
2. These holes are field drilled.
3. Tolerances shown are for cutouts. All dimensions given about centerlines must be central within tolerance unless otherwise specified.
4. Dimensions given in inches (mm).



Experience a safer and more open world

Copyright © 1999, 2024, ASSA ABLOY Access and Egress Hardware Group, Inc. All rights reserved. Reproduction in whole or in part without the express written permission of ASSA ABLOY Access and Egress Hardware Group, Inc. is prohibited.

8600, 8700, & 8800 Series Mortise Locks  
 Pair of Rabbeted Wood Doors  
 Lock and Strike Preparation

Template Number:  
 7086-0004  
 Sheet: 1 of 1  
 Date: 01/24

**ASSA ABLOY**

1-855-557-5078  
 www.assaabloy.com