



Yale Accentra Multi-Family Housing Brochure



ACCENTRA
ASSA ABLOY

ASSA ABLOY is transitioning the Yale Commercial brand to ACCENTRA. This affects only the brand name; the products and product numbers will remain unchanged. Prior to May 20, 2024, products may be shipped either as Yale Commercial brand or ACCENTRA brand. Products shipping after May 20, 2024, will be branded ACCENTRA.

Easy. Convenient. Secure.

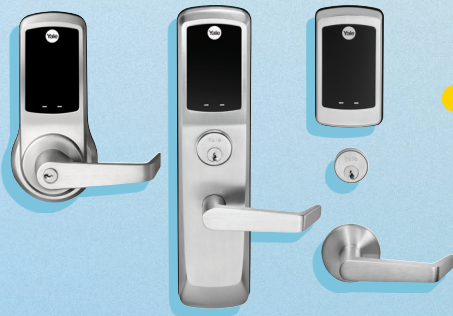
Modernize your multi-family property with solutions from Yale.

With the Yale Multi-Family Solution, you're able to easily manage access for every opening in your multi-resident property.

One cloud-based software system. **One** credential. **One** manufacturer: Yale, a name trusted every day in residential and commercial door hardware.



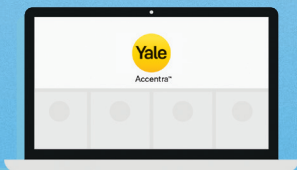
Yale Assure™ data-on-credential digital deadbolts and interconnected locks
For resident doors



nexTouch® with data-on-credential
For common areas, offices, storage areas, stairwells or exterior doors



Credential updaters
For electrified openings, such as main entrances or parking garages



Yale Accentra™ software
For remote management of access rights



Credentials
Card, fob, and mobile access options to enter every opening



110619

Coffee Shop

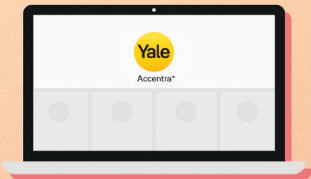
Menu board for the coffee shop:

Espresso	Coffee	Tea	Special
SOLO \$2.50	FRAPPE \$3.50	PEACH BLEND \$3.50	SAFETY \$4.50
MACCHIATO \$3.50	FRAPPE BLEND \$3.50	MACCHIATO BLEND \$3.50	SAFETY BLEND \$4.50
AMERICANO \$3.50	FRAPPE BLEND \$3.50	MACCHIATO BLEND \$3.50	SAFETY BLEND \$4.50

A Multi-Family Access Management Solution that Works for You.

Multi-Family Access Control is as easy as 1, 2, 3.

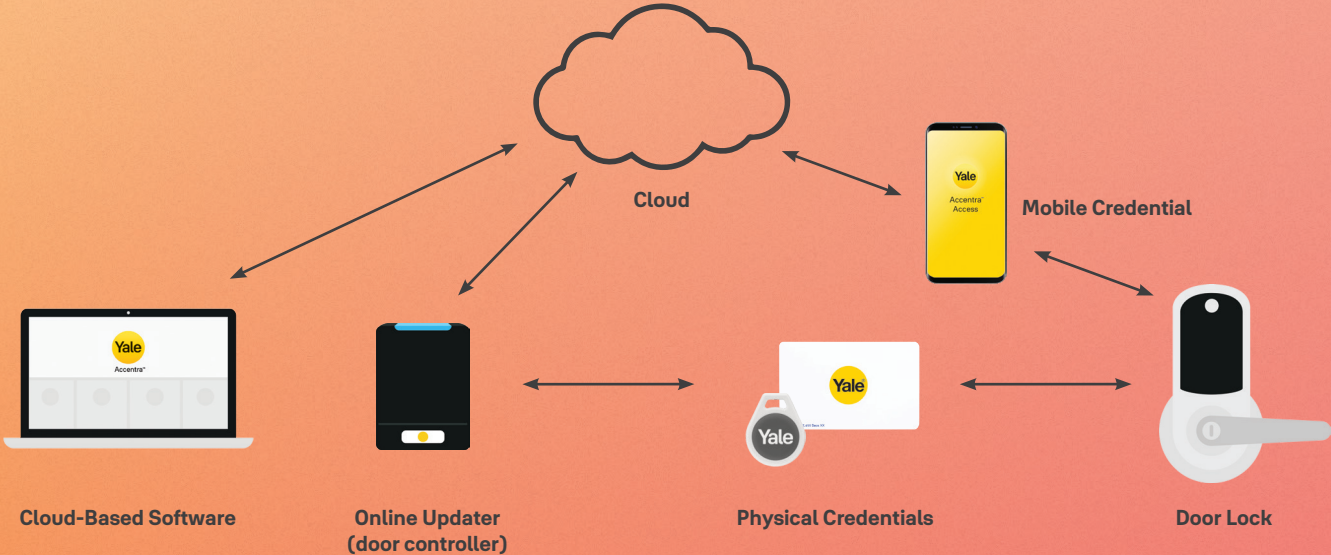
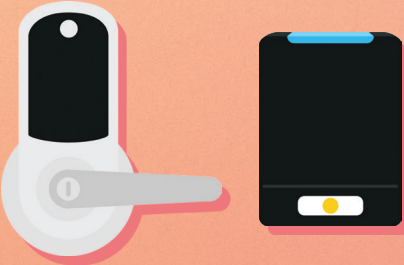
1. Manage access rights from any internet enabled device from anywhere with Yale Accentra cloud-based multi-family software.



2. Access permissions are enabled instantly.



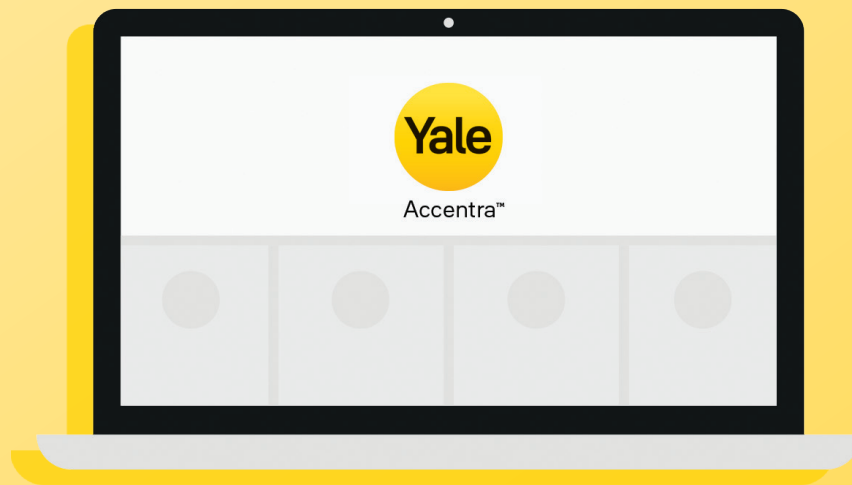
3. Residents, visitors, and staff access authorized openings.



Manage Access Rights for Residents, Visitors, and Staff



Yale Accentra™ Cloud-Based Software



- Cloud-based access management software designed specifically for multi-family
- Manage resident, visitor, and staff access for multiple properties anytime, anywhere, from any Internet-enabled device
- Intuitive user interface designed for typical management activities such as issuing leases and visitor access
- Issue emergency access through one-time PINs for lost cards or fobs or instantly apply new mobile credential rights

Technical Specifications

Dedicated web-based interface accessible from any Internet-connected device (Mac, PC, smart phone, or tablet)
Responsive design accommodates any device (Mac, PC, smart phone, or tablet)
Automatic updates
Certified to ISO/IEC 27001
Browser: Firefox, Chrome, or similar

Continuously Updated Access Rights



Credential Updater Based on Secure HID® Technologies



- Grants access to authorized physical and mobile credentials.
- Activates new physical credentials for residents, visitors, and staff
- Transmits access permissions to physical credentials at the time of entry
- Ensures physical credentials are continuously updated through typical daily use
- Scheduled and remote unlock capabilities for the online updater are managed through the Yale Accentra Cloud Interface

Technical Specifications






Sizes	Available in two sizes, with either pig tail or terminal strip wiring options: - Mini-mullion for applications requiring a smaller form factor (1.9" x 4.1" x 0.9") - Wall switch for mounting in standard single gang switch boxes (3.3" x 4.8" x 1.0")
Security	Secured end-to-end with industry standard encryption and authentication, uses digital certificates to secure all transactions with the cloud service
UL/cUL	Functions are UL - cUL Fire Listed for use on fire doors having a rating up to and including 3-hours
Warranty	Limited lifetime warranty
Environmental Specifications	Operating temperature: -31°F to +150°F (-35°C to +65°C) Storage temperature: -67°F to +185°F (-55°C to +85°C) Operating humidity: 5% to 95% relative humidity non-condensing Environmental rating: Indoor/outdoor IP55; IP65 if installed with optional gasket
Power Source	Can be powered by PoE or 24VDC
Credentials	Seos™ cards, fobs, and Yale Accentra mobile credentials

Yale Multi-Family Solution Credentials



- Card, fob, and mobile credential options
- Credentials carry access permissions to access both offline and online openings
- Physical credentials can be reused an unlimited number of times
- Physical credentials are updated at the online updater
- Mobile credential access updates are instantly applied
- Mobile credentials are included as part of the annual subscription fee

Technical Specifications

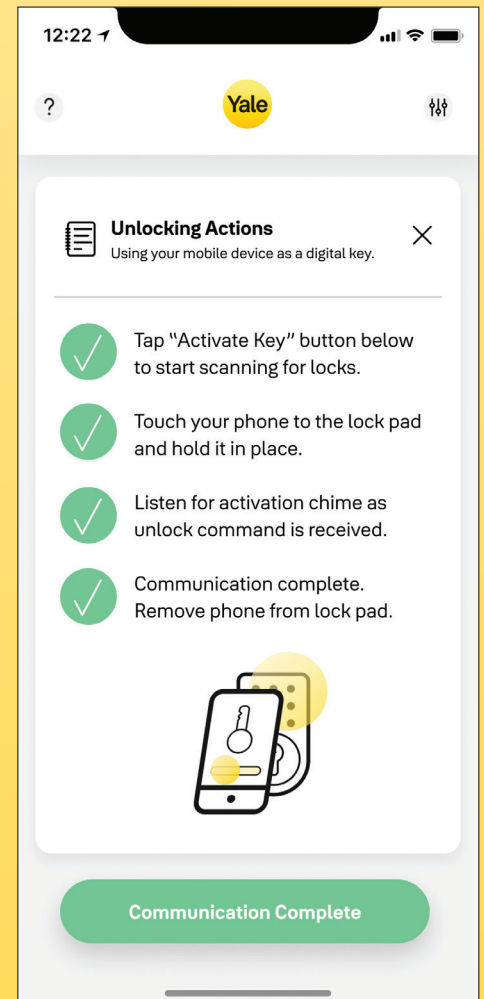
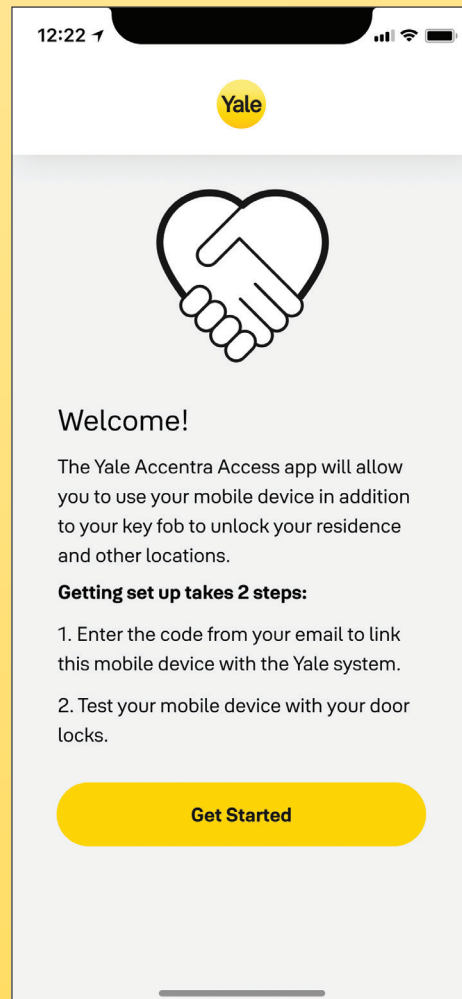
					
	Mobile credentials	Key fob with Seos®	Key card with Seos®	Key card with Seos® and custom graphics	Key card with Seos® and Prox
Part Number		NTX600-YALFOB-8K	NTX600-YALCRD-8K	NTX600-CUSCRD-8K	NTX600-YALPRX-8K
Technology					
Seos Offline	X	X	X	X	X
Seos Online PACS		X	X	X	X
Prox					X
Dimensions		1.25" x 1.56" x .24" (3.175 x 3.96 x .6 cm)	2.127" x 3.375" x 0.033" max (5.40 x 8.57 x 0.084 cm)		

The Yale Accentra Mobile Access Experience

Mobile access capabilities are available for all residents, visitors, and staff through the Yale Accentra Access App

Users download the Yale Accentra Access App, link their mobile device, and can immediately begin accessing authorized doors; cell service or WiFi is not required when using the mobile credential

Dynamic step-by-step instructions make the app easy and quick



Note: screenshots are from an iPhone.



Available for Android and iOS devices

12:22



Unlocking Actions

Using your mobile device as a digital key.



- 1 Tap "Activate Key" button below to start scanning for locks.
- 2 Touch your phone to the lock pad and hold it in place.
- 3 Listen for activation chime as unlock command is received.
- 4 Communication complete. Remove phone from lock pad.



Activate Key

Control Access to Common Areas and Exterior Doors

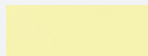



nexTouch™ Cylindrical Lock



Levers

Augusta AU		 
Monroe MO		 
Pacific Beach PB		 

Finishes

ANSI/BHMA Code		Finish Description
605 (US3)		Bright Brass, Clear Coated
613E (US10BE)		Dark Oxidized Satin Bronze - equivalent
626 (US26D)		Satin Chrome Plated
BSP		Black Suede Powder Coat

Technical Specifications

Door Specifications	Fits into the standard ANSI/BHMA A156.115 cylindrical lock with lever door prep with one additional 3/4" hole and 7 screws including latchbolt and strike
Backset	2-3/4" (70mm) standard backset
Door Thickness	1-3/4" (44mm) door thickness standard; thin door kit required for 1-3/8" thick doors
Handing	Non-handed
Latchbolt	1/2" (13mm) throw deadlocking latchbolt supplied standard
Strike	ANSI strike 4-7/8" x 1-1/4" x 1-1/4" (124 mm x 32 mm x 32 mm) lip to center supplied standard
Cylinder	Accepts Yale® fixed core component cylinders; also available to accept small format interchangeable core (SFIC)
Keying	Capable of accepting Yale® 6-pin standard, small and large format interchangeable core, security and protected keyway cylinders with master keying capabilities
Packing	Each box includes a paper door marker, combination wood and machine screws and easy-to-follow installation and programming instructions; cylinder functions supplied with two keys
ANSI/BHMA	Certified ANSI/BHMA A156.2, Series 4000 Grade 1
UL/cUL	Functions are UL - cUL Fire Listed for use on fire doors having a rating up to and including 3-hours
Warranty	1-year electrical warranty; 3-year mechanical and finish warranty
Environmental Specifications	Operating temperature: -40°F to +140°F (-40°C to +60°C) at 95% relative humidity when used with an external power supply
Power Source	Four AA alkaline batteries (included) with optional hardwire input for 9VDC external power; 9V battery power backup
Credentials	Seos™ cards, fobs, and Yale Accentra mobile credentials
Interface	Capacitive touchscreen or pushbutton
Firmware Upgradeability	Locks support on-premise wireless configuration and firmware upgrades



Capacitive Touchscreen

Touchscreen shown when activated

Lockout Indicator

Voice Assisted Programming

Low Battery Indicator

Weather Resistant – Gasketed seal allows for outdoor installation of exterior escutcheon



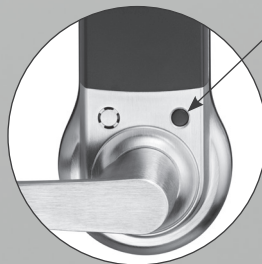
9V Battery Power Backup

Solid Metal Escutcheon - Provides quality and durability

Optional Cylinder/Key Override (Key free also available)



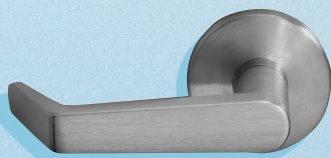
A push button model is also available with durable acrylic, back lit buttons



Privacy Button – Prevents unwanted access from the outside at the touch of a button

Control Access to Common Areas, Exterior Doors, and Resident Doors

nexTouch™ Sectional Mortise Lock



Finishes

ANSI/BHMA Code		Finish Description
605 (US3)		Bright Brass, Clear Coated
613E (US10BE)		Dark Oxidized Satin Bronze - equivalent
626 (US26D)		Satin Chrome Plated
BSP		Black Suede Powder Coat

Levers

Arcadia ARR		
Augusta AUR		
Carmel CRR		
Jefferson JNR		
Monroe MOR		
Pacific Beach PBR		
Pinehurst PNR		
Virginia VNR		

Technical Specifications

Door Specifications	Fits into the standard mortise door prep
Backset	2-3/4" (70mm) standard backset
Door Thickness	1-3/4" (44mm) door thickness standard; please specify for other door thicknesses
Handing	Field reversible
Latchbolt	3/4" spring latchbolt standard, 1" throw deadlocking latchbolt optional
Strike	Curved lip strike with 1-1/4" (32 mm) lip length standard
Cylinder	Accepts conventional, interchangeable core, security and high security cylinders, and other manufacturers' keyway cylinders
ANSI/BHMA	Certified ANSI/BHMA Grade 1
UL/cUL	Functions are UL - cUL Fire Listed for use on fire doors having a rating up to and including 3-hours
Warranty	1-year electrical warranty; 3-year mechanical and finish warranty
Environmental Specifications	Operating temperature: -40°F to +140°F (-40°C to +60°C) at 95% relative humidity when used with an external power supply
Power Source	Four AA alkaline batteries (included) with optional hardwire input for 9VDC external power; 9V battery power backup on keypad
Credentials	Seos™ cards, fobs, and Yale Accentra mobile credentials
Interface	Capacitive touchscreen or pushbutton keypad
Firmware Upgradeability	Locks support on-premise wireless configuration and firmware upgrades

Touchscreen shown when activated



Lockout Mode



Low Battery Indication

Weather Resistant Seal

9V Battery Power Backup

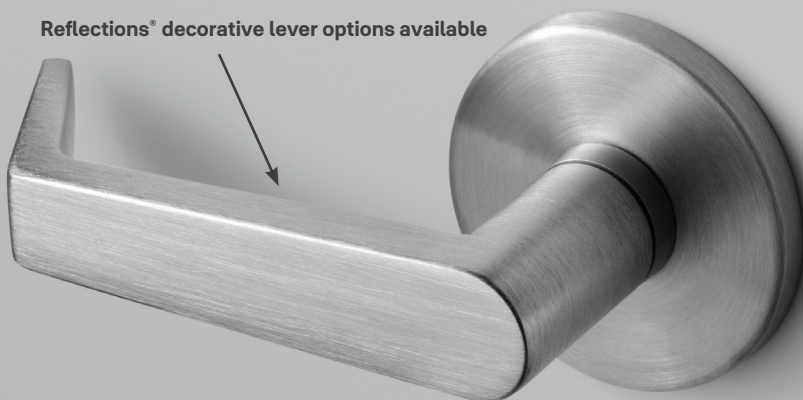
Optional Security Deadbolt

Built-in Door Position Sensor/Deadlocking Function



A push button model is also available with durable acrylic, back lit buttons

Reflections® decorative lever options available



A push button model is also available with durable acrylic, back lit buttons



Control Exterior Door and Stairwell Access

nexTouch™ Keypad Exit Trim



Compatible Exit Devices





Manufacturer	Model/Series Number*
Arrow	3880
Corbin Russwin	ED5200, ED5200S
Dorma	9300
Falcon®	25
SARGENT	8800
Von Duprin®	98, 99
Yale	1800, 2100, 6000, 7000

*Compatible with rim device only. Please contact Technical Product Support for more information.

Levers

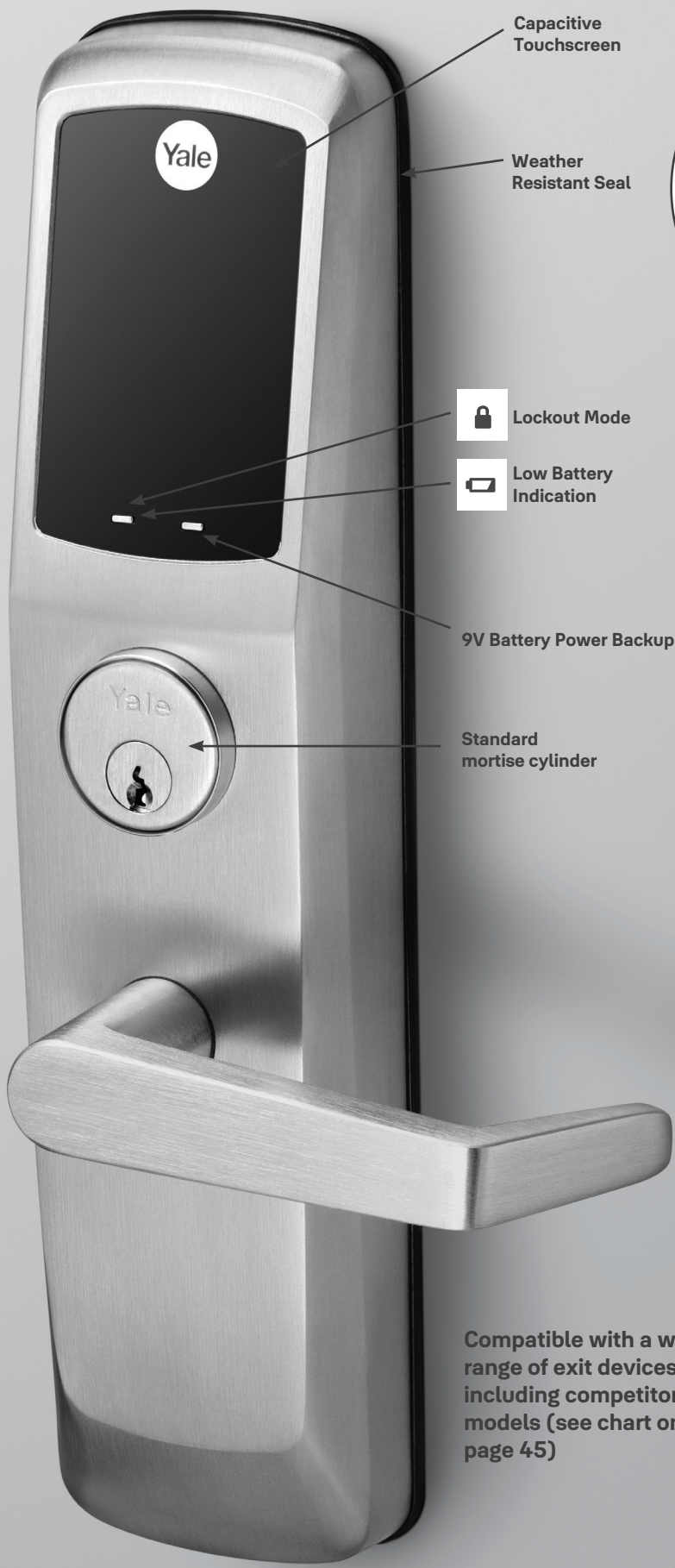
Augusta AU		
Monroe MO		
Pacific Beach PB		

Finishes

ANSI/BHMA Code	Finish Description
605 (US3)	 Bright Brass, Clear Coated
613E (US10BE)	 Dark Oxidized Satin Bronze - equivalent
626 (US26D)	 Satin Chrome Plated
BSP	 Black Suede Powder Coat

Technical Specifications


Door Specifications	Retrofits onto many exit device models, see chart above
Door Thickness	1-3/4" (44mm) door thickness standard, 2-1/4" also available
Handing	Field reversible
Cylinder	Accepts conventional, interchangeable core, security and high security cylinders, and other manufacturers' keyway cylinders
Keying	Capable of accepting Yale 6-pin standard, small and large format interchangeable core, security and protected keyway cylinders with master keying capabilities
ANSI/BHMA	Certified ANSI/BHMA A156.3, Grade 1
UL/cUL	Functions are UL - cUL Fire Listed for use on fire doors having a rating up to and including 3-hours
Warranty	3-year electronic and mechanical warranty, 1-year finish warranty
Environmental Specifications	Operating temperature: -40°F to +140°F (-40°C to +60°C) at 95% relative humidity when used with an external power supply
Power Source	Four AA alkaline batteries (included) with optional hardwire input for 9VDC external power; 9V battery power backup
Credentials	Seos™ cards, fobs, and Yale Accentra mobile credentials
Interface	Capacitive touchscreen or pushbutton
Firmware Upgradeability	Locks support on-premise wireless configuration and firmware upgrades



Capacitive Touchscreen

Weather Resistant Seal

 Lockout Mode

 Low Battery Indication

9V Battery Power Backup

Standard mortise cylinder



Pushbutton keypad option available

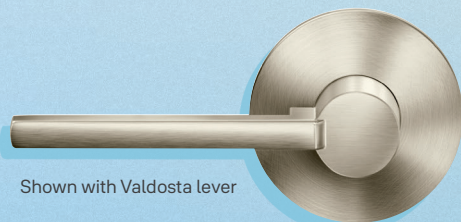
Compatible with a wide range of exit devices, including competitor models (see chart on page 45)



Privacy Button

Control Access to Resident Doors

Yale Assure™ Interconnected Lock



Shown with Valdosta lever

Finishes

ANSI/BHMA Code	Finish Description
619 (US15)	Satin Nickel Plated, Clear Coated
0BP (US10BP)	Oil Rubbed Bronze - Permanent
BSP	Black Suede Powder Coat

*Split finish available

Levers

Academy AC		
Augusta AU		
Delaware DW		
Marina MA		
McClure MC		
Milan MN		
Monroe MO		
Norwood NW		
Pacific Beach PB		
Woodland WL		
Valdosta VL		
Virgo VG		

Technical Specifications

Door Specifications	2-1/8" Face Bore, 1" Edge Bore, 4" or 5-1/2" Center to Center
Backset	2-3/8" (60mm) or 2-3/4" (70mm)
Door Thickness	1-3/8" (35mm) to 1-3/4" (44mm)
Handing	Field reversible
Latch Faceplate	1" (25mm) W x 2-1/4" (57mm) H; round corner standard, square corner available to order
Strike	2-1/4" (57 mm) full lip; round corner standard, other strikes available to order
Cylinder	KW-1 compatible standard, other cylinders/keyways available to order
Keying	KD (Keyed Different) standard, master keying available to order
Packing	Box pack
ANSI/BHMA	Certified ANSI/BHMA A156.12, Grade 2
UL/cUL	Listed for 90 minute fire doors
Warranty	1-year electrical and finish warranty; 3-year mechanical warranty
Environmental Specifications	Outside temperature range: -22°F to +140°F (-30°C to +60°C) Inside temperature range: 5°F to +158°F (-15°C to +70°C) Battery temperature range: -14°F to +131°F (-10°C to +55°C) Storage temperature range: -40°F to +85°F (-40°C to +85°C)
Power Source	Four AA alkaline batteries, included
Credentials	Seos™ cards, fobs, and Yale Accentra mobile credentials
Firmware Upgradeability	Locks support on-premise wireless configuration and firmware upgrades



Capacitive Touchscreen

Press Yale logo to wake the lock

Rubber seal protects your door and shields your lock from weather elements.

Voice Assisted Programming

Touchscreen shown when activated

Low Battery Indicator

Lockout Indicator

Solid Metal Escutcheon -
Provides quality and durability

Emergency key override

Privacy Button - Prevents unwanted access from the outside at the touch of a button

Motorized tapered deadbolt with anti-cut hardened steel pin

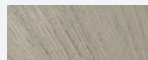


Latchbolt and deadbolt are retracted simultaneously in a single motion for quick and easy egress

Control Access to Resident Doors

Yale Assure™ Digital Deadbolt



Finishes

ANSI/BHMA Code		Finish Description
619 (US15)		Satin Nickel Plated, Clear Coated
OBP (US10BP)		Oil Rubbed Bronze - Permanent
BSP		Black Suede Powder Coat

Technical Specifications

Door Specifications	2-1/8" face bore, 1" edge bore
Backset	2-3/8" or 2-3/4" backset
Door Thickness	1-3/8"* to 2-1/4" * Thin door kit required for 1-3/8" thick doors
Handing	Auto handing after installation
Latch	2-3/8" to 2-3/4" adjustable
Latch Faceplate	1" x 2-1/4" RC (round corner)
Strike	1-1/8" x 2-3/4" RC (round corner)
Cylinder	KW-1 compatible standard, other cylinders/keyways available to order
Keying	KD (Keyed Different) standard, master keying available to order
Packing	Box pack
ANSI/BHMA	Certified ANSI/BHMA A156.36, Grade 2
UL/cUL	Functions are UL - cUL Fire Listed for use on fire doors having a rating up to and including 90 minutes
Warranty	1-year electrical and finish warranty; 3-year mechanical warranty
Environmental Specifications	Outside temperature range: -22°F to +140°F (-30°C to +60°C) Inside temperature range: 5°F to +158°F (-15°C to +70°C) Battery temperature range: -14°F to +131°F (-10°C to +55°C) Storage temperature range: -40°F to +85°F (-40°C to +85°C)
Power Source	Four AA alkaline batteries, included
Credentials	Seos™ cards, fobs, and Yale Accentra mobile credentials
Firmware Upgradeability	Locks support on-premise wireless configuration and firmware upgrades

Capacitive Touchscreen

Press Yale logo to wake the lock

Voice Assisted Programming

Touchscreen shown when activated



Low Battery Indicator

Lockout Indicator

Solid Metal Escutcheon - Provides quality and durability

Motorized tapered deadbolt with anti-cut hardened steel pin

Emergency key override

Rubber seal protects your door and shields your lock from weather elements.

Privacy Button - Prevents unwanted access from the outside at the touch of a button



Note: Mechanical locks, including levers, are sold separately.



Trusted every day

Contact Us

U.S.A.

Yale Locks & Hardware

Address: 225 Episcopal Road

Berlin, CT 06037-4004

Tel: 1-800-438-1951

Fax: 1-800-338-0965

us.yalehome.com

yalecommercial.com

Canada:

ASSA ABLOY Door Security Solutions Canada

Address: 160 Four Valley Drive

Vaughan, Ontario L4K 4T9

Tel: 1-800-461-3007

Fax: 1-800-461-8989

assaabloydss.ca

International:

ASSA ABLOY Americas International

Tel: 1-905-821-7775

Fax: 1-905-821-1429

assaabloyai.com

THE YALE BRAND, with its unparalleled global reach and range of products, reassures more people in more countries than any other consumer locking solution.

THE ASSA ABLOY GROUP is the world's leading manufacturer and supplier of locking solutions, dedicated to satisfying end-user needs for security, safety and convenience.

Yale Commercial is a business associated with ASSA ABLOY Access and Egress Hardware Group, Inc., an ASSA ABLOY Group company. Copyright © 2016-2022, ASSA ABLOY Access and Egress Hardware Group, Inc. All rights reserved. Reproduction in whole or in part without the express written permission of ASSA ABLOY Access and Egress Hardware Group, Inc. is prohibited. Patent pending and/or patent www.assaabloydss.com/patents.