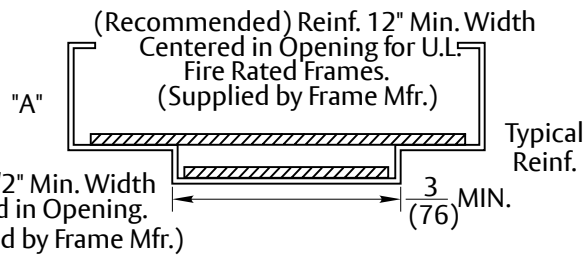
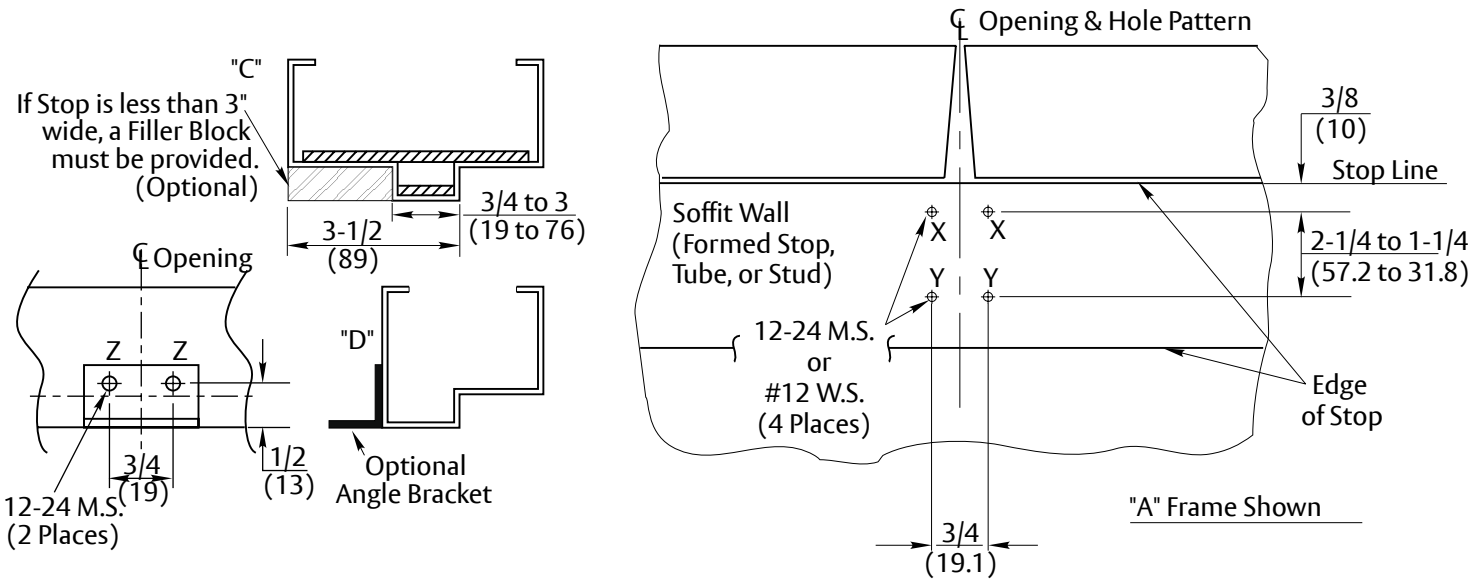


**FRAME APPLICATIONS**



Application	Holes Required
"A"	X & Y
"C"	X & Y (Note 6)
"D"	X & Z

**SOFFIT PREP (TOP VIEW)**  
—TYPICAL FOR ALL FRAMES—



**Notes:**

1. Do not scale drawing. Dimensions shown in inches(mm).
2. Prepare mounting holes when installing the mullion. Use this template for structural frame preparation.
3. Metal frames should provide mounts to maintain not less than (3) full screw threads engaged
4. Wood frames should provide not less than 5/8(16)screw engagement to structural beam (construction grade lumber, or better).
5. M100(F) & KRM100(F) mullions are made from 1-1/2 x 3 (38.1x76.2) tubular steel. Locate device from mullion face (strike seat).
6. Two flat head 12-24 x 1-1/4 machine screws or #12 x 1-3/4 wood screws are required (not supplied with mullion).

**RESPONSIBILITY**

DOOR AND FRAME MANUFACTURERS ARE RESPONSIBLE FOR PROVIDING ADEQUATE CONSTRUCTION OR REINFORCEMENTS FOR PROPER INSTALLATION OF HARDWARE SHOWN. ALL ARCHITECTURAL BUILDERS HARDWARE MUST BE INSTALLED ON PROPERLY REINFORCED DOORS AND FRAMES, REGARDLESS OF TYPE, MATERIAL, OR METHOD OF CONSTRUCTION.

**KRM100(F) & M100(F) Mullions  
Frame Preparation**

**Contact us for support at 1-855-557-5078.**

**ASSA ABLOY**

SUPERSEDES 7400-0100 02/08	DO NOT SCALE DRAWING	
TEMPLATE NUMBER	7400-0100	DATE 01-24