

## DOOR CLOSER ADJUSTMENTS

### Arm Attachment to Track

Insert arm stud into slide block in track. Secure by pushing in on the retainer clip that extends from the slide block, until it is flush with the slide block, see illustration on page 4 of these instructions.

### Hold Open Angle:

Place door in the Hold Open position. Remove 9/64" hex drive socket head screw from arm. Open door to desired angle and install hex-drive socket head screw into hole in adjusting rod that is aligned with the hole in the adjusting tube.

### Closing Power

Closing Power can be increased by 50%. To increase power, see Figure 1, rotate "Spring Adjustment Shaft" **clockwise** using a 5/16" socket or adjustable wrench. 20 full turns (360°) will provide maximum available power. Product is shipped set at 10 full turns.

### Closing Cycle (hydraulic control)

See figure 2A.

Valve "L" controls door speed in **Latch range**.

Valve "S" controls door speed in **Sweep range**.

Use 1/8" hex-key furnished and adjust as shown in figure 3.

### Opening Cycle (hydraulic control)

See figure 2B.

Valve "B" cushions (slows) door opening in the **backcheck range**.

Note: Never close this valve completely or damage to closer may occur.

Use 1/8" hex-key furnished and adjust as shown in figure 4.

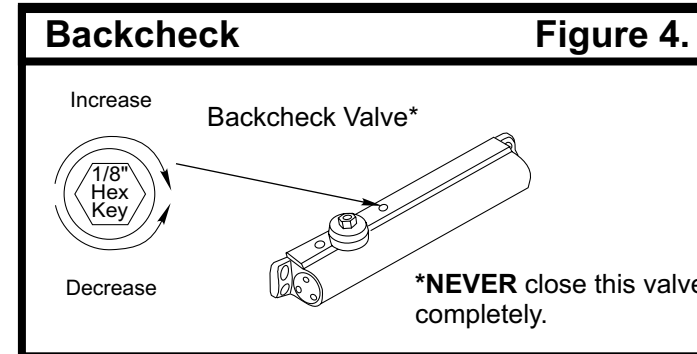
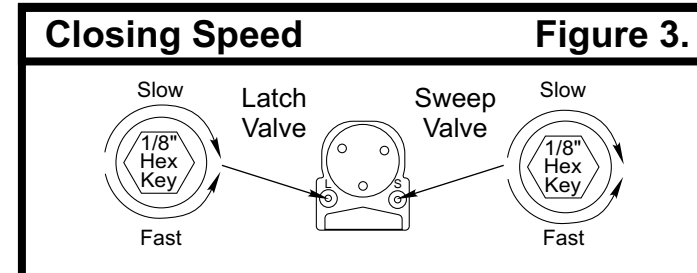
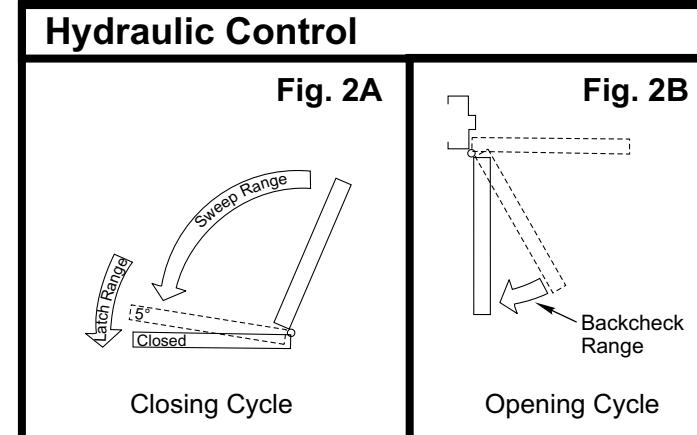
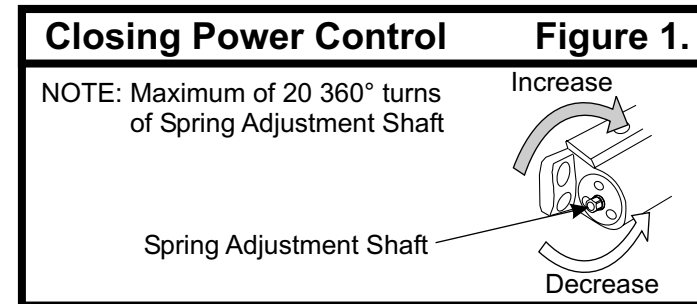
### Installation of Cover:

- **Full cover:** Slide cover insert into the un-used cutout in cover. Install cover using screws provided.
- **Narrow cover:** Install cover using screws provided. Install pinion cap onto pinion shaft by hand or with a Phillips screw driver - DO NOT OVER TIGHTEN.
- **Full metal cover:** Fasten cover to mounting clips with screws provided.
- **Architectural plastic cover\*:** Slide cover insert into the un-used cutout in cover. Install standoffs in ends of closer. Snap cover onto standoffs.
- **Architectural metal cover\*:** Remove cover insert where pinion is located. Install standoffs in ends of closer. Install cover using screws provided.
- **Metal hook-up box cover:** Fasten with four screws provided.

\* **NOTE:** Architectural Covers CAN NOT be used for stop (push) side applications.

### Hold Open Power Adjustment:

If more hold open power is required, the power may be increased by turning the adjustment screw in the end of the track nearest the hinges. Use 9/64" hex wrench provided and rotate adjustment screw clockwise to increase holding power.



### IMPORTANT!

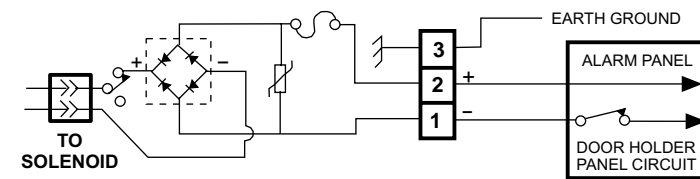
#### After making all wiring connections:

- Turn power to unit "on". "PTD" units only: green LED should be illuminated.
- Open door to the hold open position. Manually pull door out of hold open and release ... door should close.
- Again, open door to the hold open position. **Depress "Test Switch" button on the hook-up board** ... door should close.
- Fasten hook-up box cover with four screws provided.

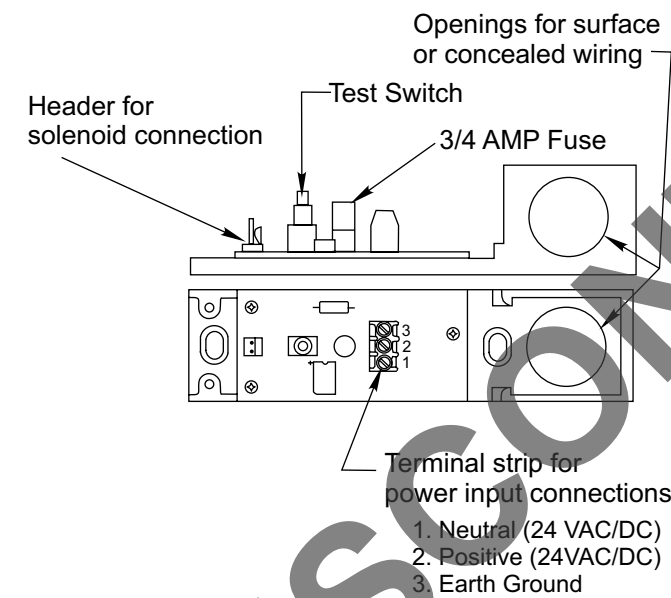
## "PT" WIRING INSTRUCTION 24VAC/DC or 120VAC

Input voltage supplied must match label rating on hook-up box.

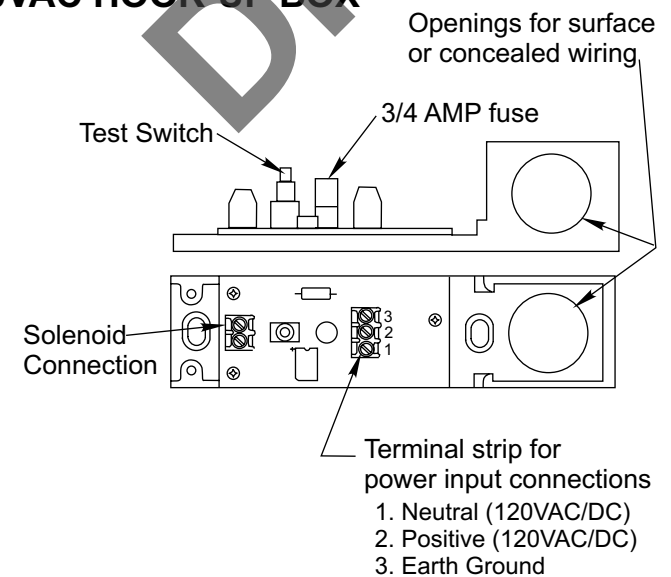
### TYPICAL WIRING DIAGRAM



### 24VAC/DC HOOK-UP BOX



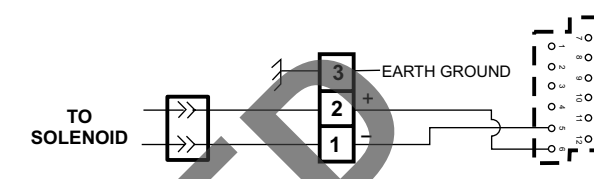
### 120VAC HOOK-UP BOX



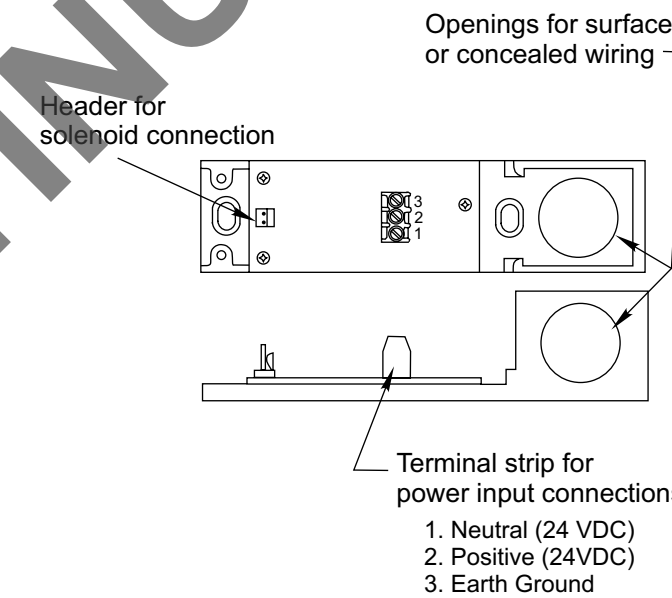
## "PTS" WIRING INSTRUCTION 24VDC ONLY

Typical wiring terminals 1 and 2 will connect to terminals 5 and 6 from "PTD" unit

### TYPICAL WIRING DIAGRAM



### HOOK-UP BOX



### For PTD Models:

Refer to "Power Track" "Wiring Instructions" No. 80-9342-0900-021 for making wiring connections.

### SPECIFICATIONS:

	120VAC	24VAC	24VDC
<b>Voltage</b>	120VAC + 10%-15%	24VAC + 10%-15%	24VDC + 10% -15%
<b>Current</b>	.018 AMPS	.090 AMPS	.090 AMPS

- NOTES: 1. Maximum wire size is 14AWG.  
2. All wiring and connections use standard wiring practice conforming with local wiring codes.

**Yale** Security Group  
An ASSA ABLOY Group Co.  
1902 Airport Road, Monroe, NC  
Telephone: (800)-438-1951; Fax: (800)-338-0965  
www.yalesecurity.com

## Yale® Installation Instructions

80-9303-2211-010 (04-06)

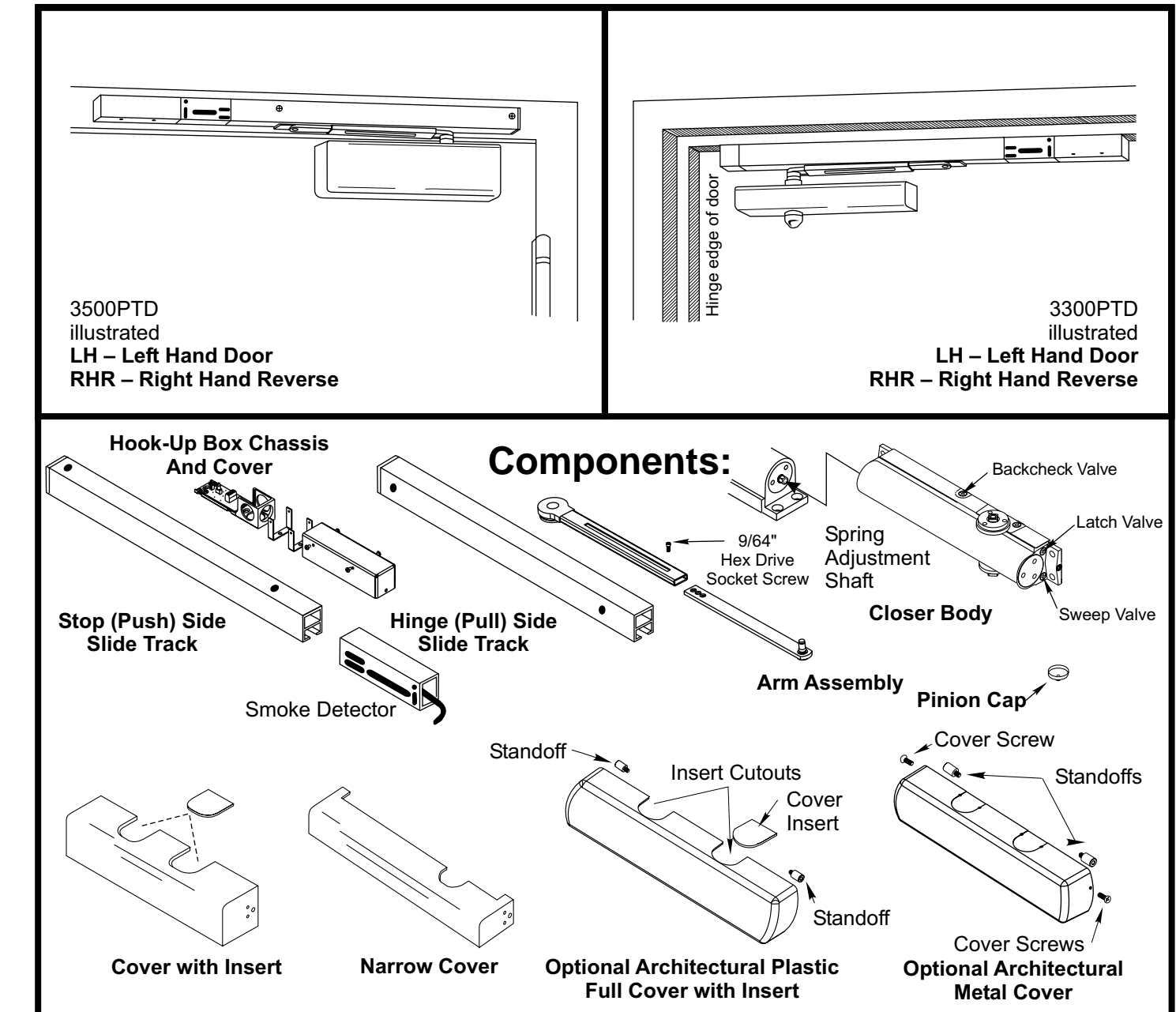
Combination Door Closer-Holder and Releasing Device WITHOUT and WITH Integral Smoke Detector



**CAUTION**  
An incorrectly installed or improperly adjusted door closer can cause property damage or personal injury. These instructions should be followed to avoid the possibility of misapplication or misadjustment.

NOTE: For special applications a separate door and frame preparation template is packed with these instructions. Use this instruction sheet for installation sequence and closer adjustments only.

- Use of an auxiliary door stop is always recommended.



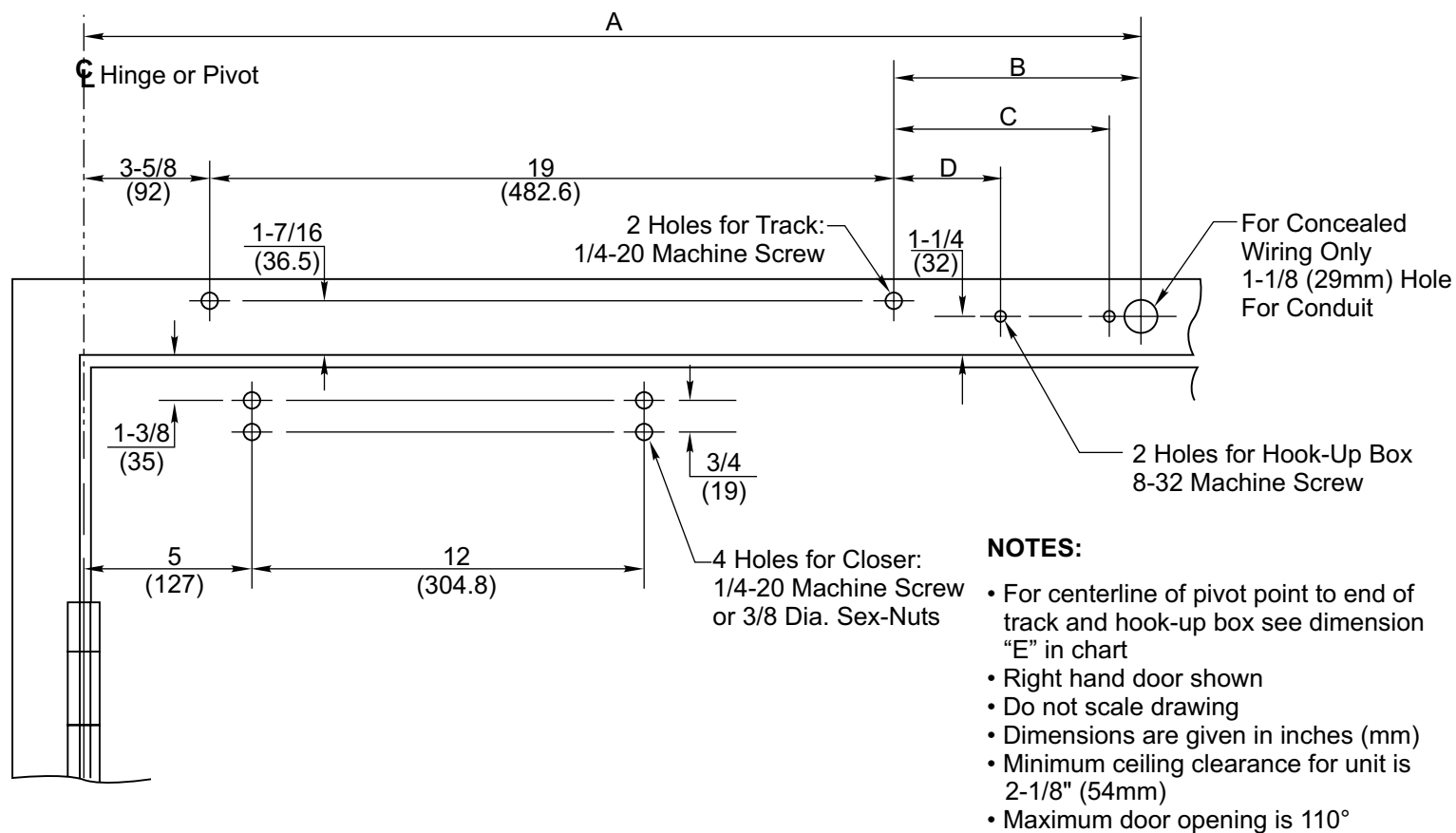
## Power Track Series Master Unit – PTD (with detector) Support Unit - PT (without detector) Slave Unit - PTS (without detector) Models

Hinge (Pull) Side of Door Application      Stop (Push) Side of Door Application

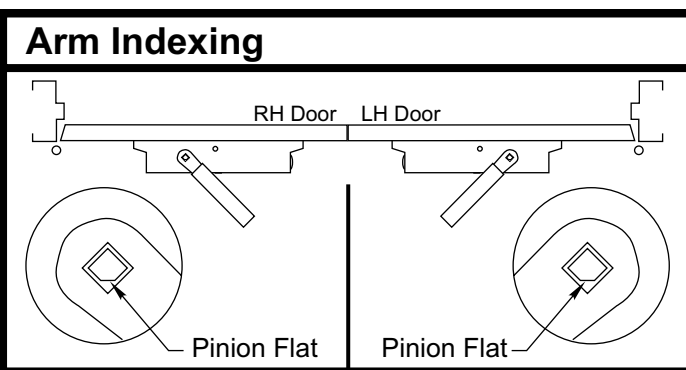
**3300 PTD**      **P3300 PTD**  
**3500 PTD**      **P3500 PTD**  
**3300 PT/PTS**      **P3300 PT/PTS**  
**3500 PT/PTS**      **P3500 PT/PTS**

NOTE: For wiring of PTD models, see "Power Track" "Wiring Instructions" No. 80-9342-0900-021

## Hinge (Pull) Side Applications



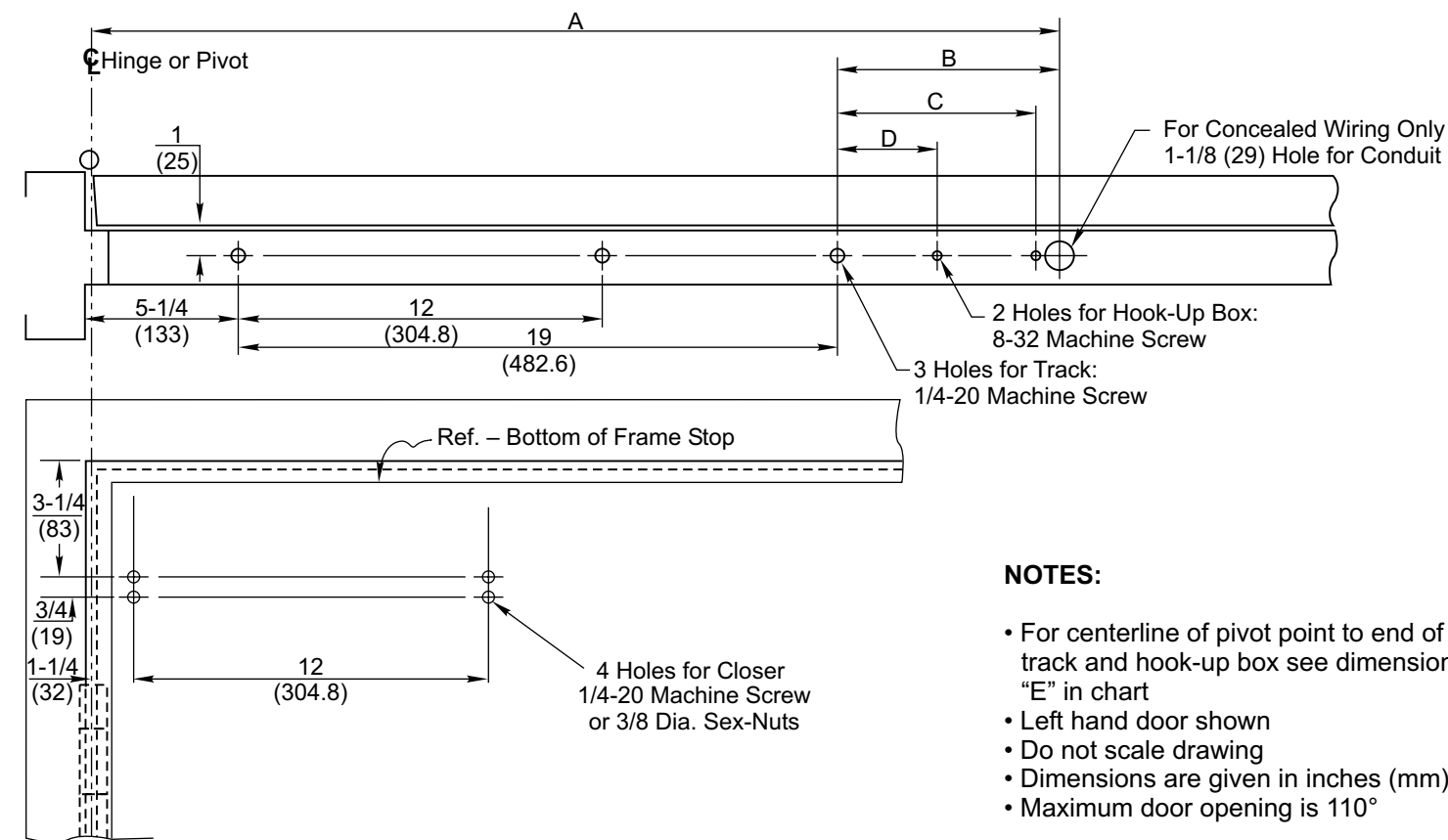
	A	B	C	D	E
PT/PTS	31-1/16 (789)	8-7/16 (214)	7-5/8 (194)	4-3/8 (111)	32-3/16 (818)
PTD	34-11/16 (881)	12-1/16 (306)	11-1/4 (286)	8 (203)	35-13/16 (910)



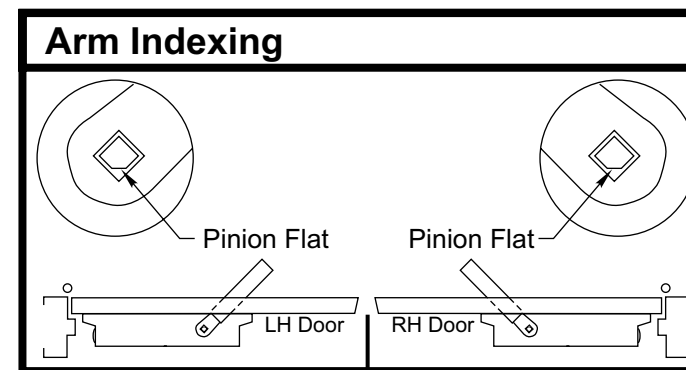
- For Concealed Wire Applications Only:** Locate and drill 1-1/8" (29mm) diameter hole in frame face for the conduit.
- Locate mounting holes in door and frame** using above template:  
**Door** – 4 holes for **Closer**  
**Frame** – 2 holes for **Track**. 2 holes for **Hook-up Box**
- Prepare mounting holes for fasteners** using "Preparation for Fasteners" chart on page 4.
- Fasten Track Assembly to frame** with spring buffer toward hinge edge of frame and open side facing down.
- Remove metal cover and straps** from hook-up box assy..  
**NOTE:** Units with a 120V to 24V transformer require that hook-up board be removed from chassis to enable mounting.
- Fasten Hook-up Box Straps and Chassis to frame** with conduit hole openings away from hinge edge of frame.  
**NOTES:** Place Hook-Up Box straps between frame and chassis. Special conduit nut supplied to anchor 3/4" conduit fitting.

- Mount CLOSER BODY to door** with valve end of closer toward hinge edge of door.
- Adjust arm to shortest length** and install 9/64" hex drive socket head screw from screw pack.
- Place slide arm on pinion shaft** using Arm Indexing instructions above.
- Secure arm with arm washer and arm screw.**
- Insert arm stud into slide block** in track assembly. Secure by pushing in on the retainer clip that extends from the slide block in the track, until it is flush with the slide block (see Attaching Arm Stud to Slide on page 4).

## Stop (Push) Side Applications



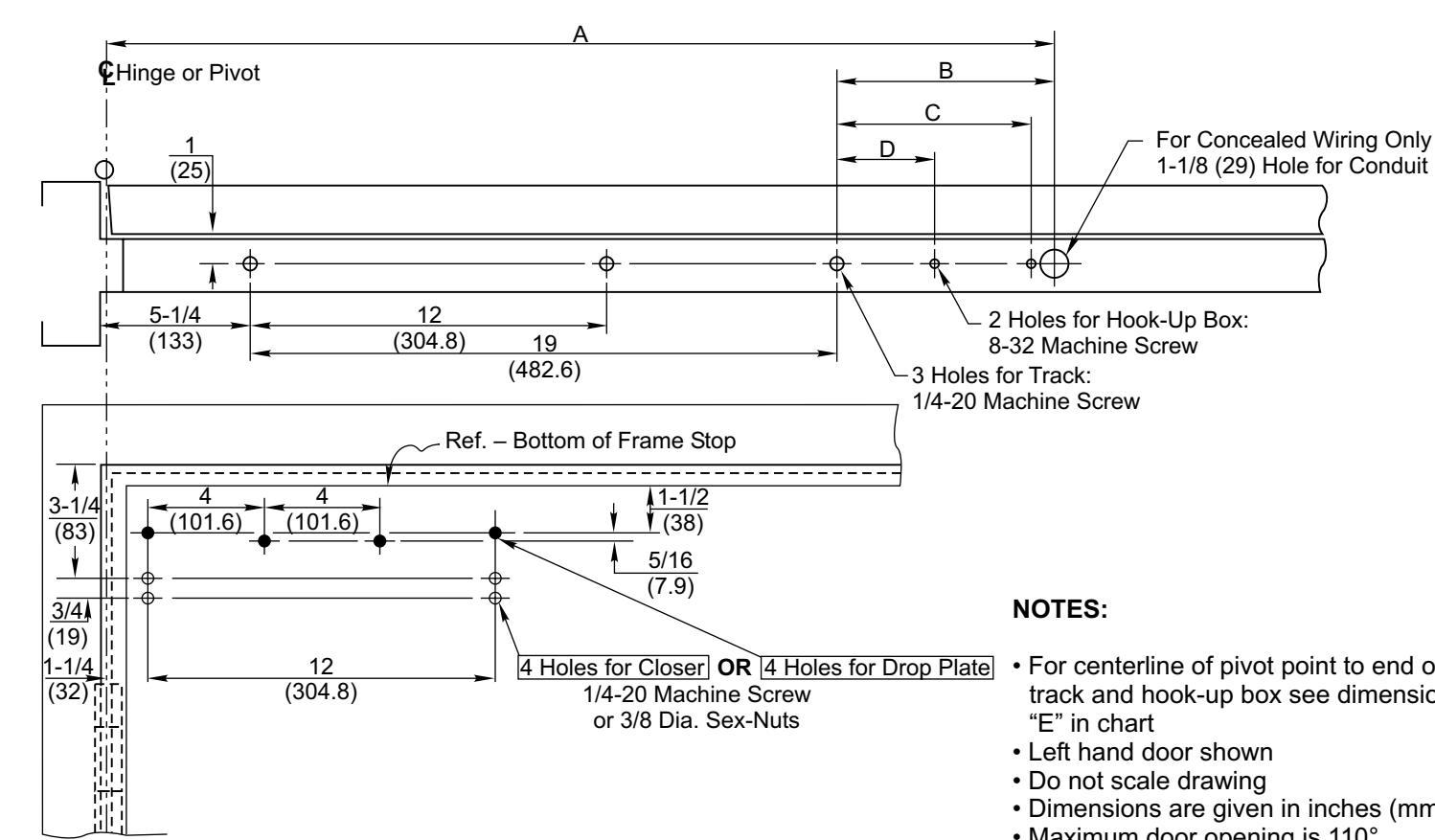
	A	B	C	D	E
PT/PTS	32-11/16 (830)	8-7/16 (214)	7-5/8 (194)	4-3/8 (111)	33-13/16 (858)
PTD	36-5/16 (922)	12-1/16 (306)	11-1/4 (286)	8 (203)	37-7/16 (951)



- For Concealed Wire Applications Only:** Locate and drill 1-1/8" (29mm) diameter hole in frame soffit for the conduit.
- Locate mounting holes in door and frame** using above template:  
**Door** – 4 holes for **Closer** or **8148 Drop Plate** (see page 4)  
**Frame** – 3 holes for **Track**. 2 holes for **Hook-up Box**
- Prepare mounting holes for fasteners** using "Preparation for Fasteners" chart on page 4.
- Fasten Track Assembly to frame** with spring buffer toward hinge edge of frame and open side facing down.
- Remove metal cover and straps** from hook-up box assy..  
**NOTE:** Units with a 120V to 24V transformer require that hook-up board be removed from chassis to enable mounting.
- Fasten Hook-up Box Straps and Chassis to frame** with conduit hole openings away from hinge edge of frame.  
**NOTES:** Place Hook-Up Box straps between frame and chassis. Special conduit nut supplied to anchor 3/4" conduit fitting.

- Mount CLOSER BODY (or Drop Plate and then Closer Body) to door** with spring adjustment nut toward hinge edge of door.
- Adjust arm to shortest length** and install 9/64" hex drive socket head screw from screw pack.
- Place slide arm on pinion shaft** using Arm Indexing instructions above.
- Secure arm with arm washer and arm screw.**
- Insert arm stud into slide block** in track assembly. Secure by pushing in on the retainer clip that extends from the slide block in the track, until it is flush with the slide block (see Attaching Arm Stud to Slide on page 4).

## 3148 Drop Plate Template with Stop (Push) Side Application



	A	B	C	D	E
PT/PTS	32-11/16 (830)	8-7/16 (214)	7-5/8 (194)	4-3/8 (111)	33-13/16 (858)
PTD	36-5/16 (922)	12-1/16 (306)	11-1/4 (286)	8 (203)	37-7/16 (951)

Preparation for Fasteners		
Fasteners	Opening	Fastener Preparation
8-32 Machine Screw	Metal Frame	Drill: #29 [.136" (3.45mm) dia.] 8-32 UNC Tap
1/4-20 Machine Screw	Metal Door or Frame	Drill: #7 [.201" (5.10mm) dia.] 1/4"-20 UNC Tap
3/8 Dia. Sex Nut	Wood or Composite Door	3/8" [.375" (9.50mm) dia.] through

