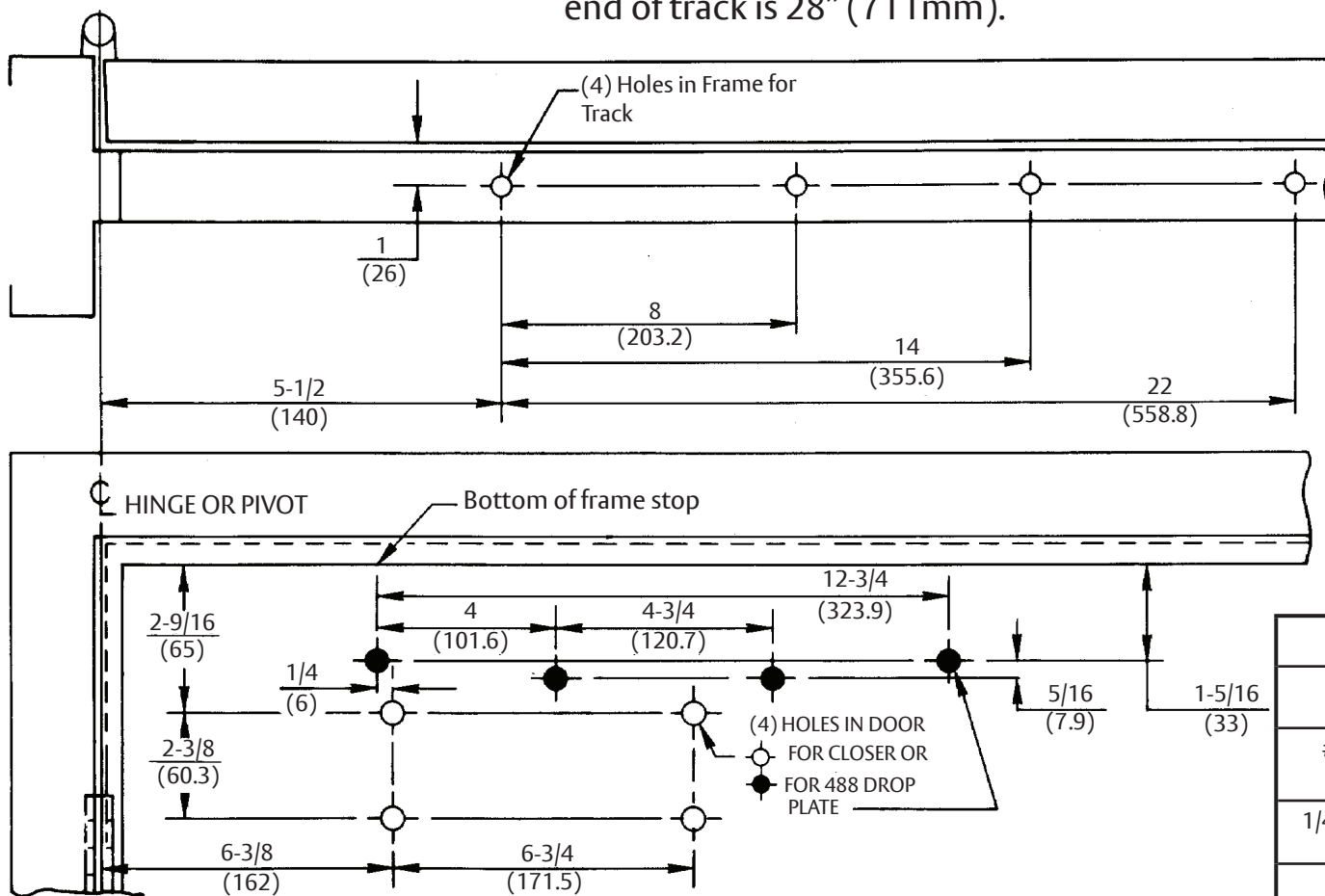


IMPORTANT: From centerline of pivot point to end of track is 28" (711mm).



Notes:

1. Left hand shown.
2. Do not scale drawing.
3. Dimensions are given in inches (mm).
4. Minimum ceiling clearance for unit is 4-5/8" (118mm).
5. Series P1400ST or P4410ST are not permitted to be used on fire doors.
6. Maximum door opening:
 - **Non-Hold Open** with Buffer
Assembly in track **-110°**
 - **Non-Hold Open** without Buffer
Assembly in Track **-125°**
Auxiliary stop required.
 - **Hold Open** **-110°**

Preparation for Fasteners		
Fasteners	Door or Frame	Drill Sizes
#14 type "A" S.M. screw	Wood	7/32" (5.50mm)
1/4"-20 machine screw	Metal	drill: #7 (.201") tap: 1/4"-20
Sex nuts and bolts (Optional)	Hollow Metal	9/32" (7.00mm) thru; 3/8" (9.50mm) door face opposite to closer
	Aluminum or Wood	3/8" (9.50mm.) through
Thru bolt and grommet nuts (Optional)	All	9/32" (7.00mm) thru; 3/8" (9.50mm) dia. x 3/8" (10mm) deep door face opposite to closer

Experience a safer and more open world

Copyright © 2004, 2024, ASSA ABLOY Access and Egress Hardware Group, Inc. All rights reserved. Reproduction in whole or in part without the express written permission of ASSA ABLOY Access and Egress Hardware Group, Inc. is prohibited.

P400ST, P1400ST Series Door Closer - Sized 4 thru 6
P4400ST, P4410ST Series Door Closer - Multi- Size 1 to 6
 Slide Track With or Without 488 Drop Plate
 Opposite to Hinge (Push) Side, Non-Hold Open or Hold Open Application

Template Number:
80-7344-0520-010
Sheet: 1 of 1
Date: 01/24

ASSA ABLOY

1-855-557-5078
www.assaabloy.com