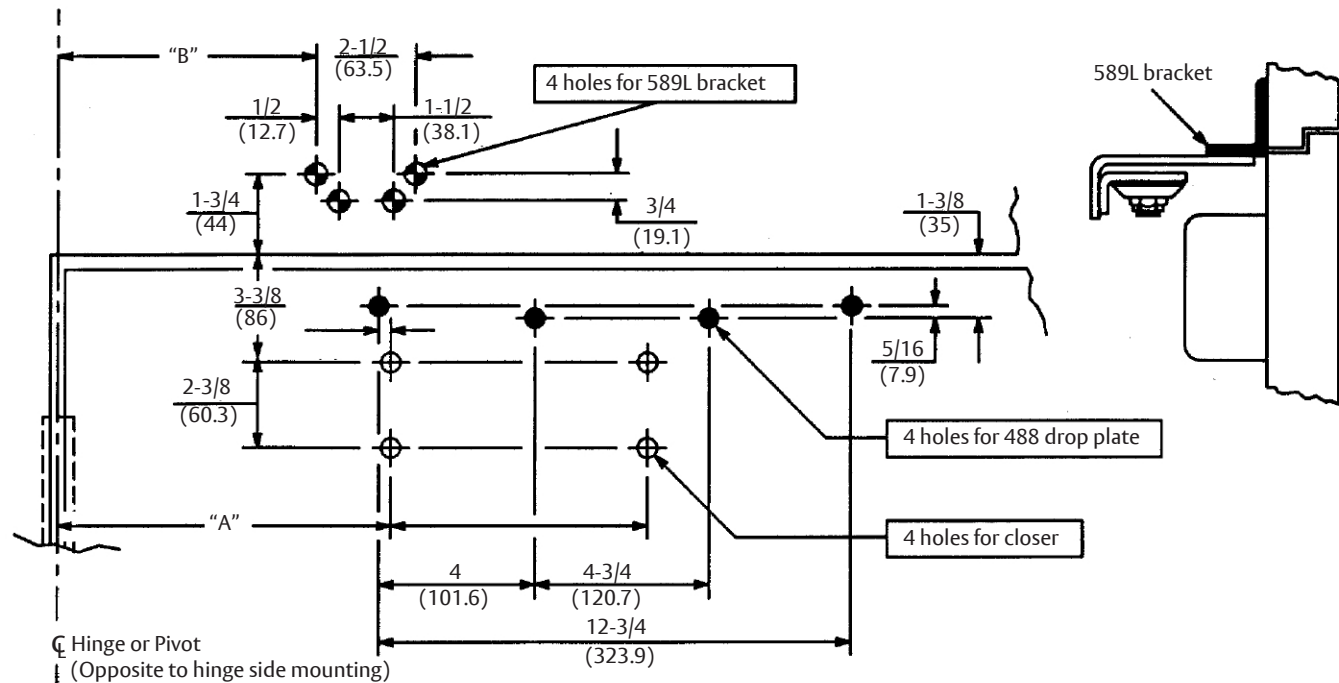


Opening	Dim. "A"	Dim. "B"
To 100°	8-3/4 (222)	9-3/8 (238)
100° to 120°	7-3/4 (197)	8-3/8 (213)
120° to 150°	6-3/4 (171)	7-3/8 (187)
150° to 180°	5-3/4 (146)	6-3/8 (162)



Caution: Door swing may be limited by door, frame wall or hardware conditions.

Notes:

1. Do not scale drawing.
2. Left hand door shown.
3. Dimensions are in inches (mm).
4. Hollow metal doors require channel or box type reinforcement when thru bolt mount is specified.
5. Sex bolts may be required for wood or plastic faced fire door mounting.
6. Minimum thickness recommended for reinforcements in hollow metal doors and frames: .1046" (2.66mm) unless otherwise noted.
7. Hold Open Arm closers without fusible - link release are not permitted to be used on fire doors.

Preparation for Fasteners			
Fasteners		Door or Frame	Drill Sizes
Standard	#14 type "A" S.M. Screw Arm: 1-1/4" (32mm) Closer: 2-3/4" (70mm)	Wood	7/32" (5.5mm)
		Aluminum	
	1/4-20 machine screw	Metal	drill: #7 (.201") tap: 1/4-20
Optional	Sex nuts and bolts	Hollow Metal	9/32" (7.00mm) thru: 3/8" (9.50mm) door or transom face opposite to closer
		Aluminum or Wood	3/8" (9.50mm) thru
	Thru bolts and grommet nuts	All	9/32" (7.00mm) thru: 3/8" (9.50mm) dia. x 3/8" (10mm) deep on door or transom face opposite to closer

Experience a safer
and more open world

Copyright © 2003, 2024, ASSA ABLOY Access and Egress Hardware Group, Inc. All rights reserved. Reproduction in whole or in part without the express written permission of ASSA ABLOY Access and Egress Hardware Group, Inc. is prohibited.

PA1400 Series Door Closer- Sized 2 thru 6
(PA)4410 Series Door Closer- Multi-Size 2 to 6
With 589L Adaptor Bracket and With or Without 488 Drop Plate
Parallel Hold Open

Template Number:
7344-0215
Sheet: 1 of 1
Date: 01/24

ASSA ABLOY

1-855-557-5078
www.assaabloy.com